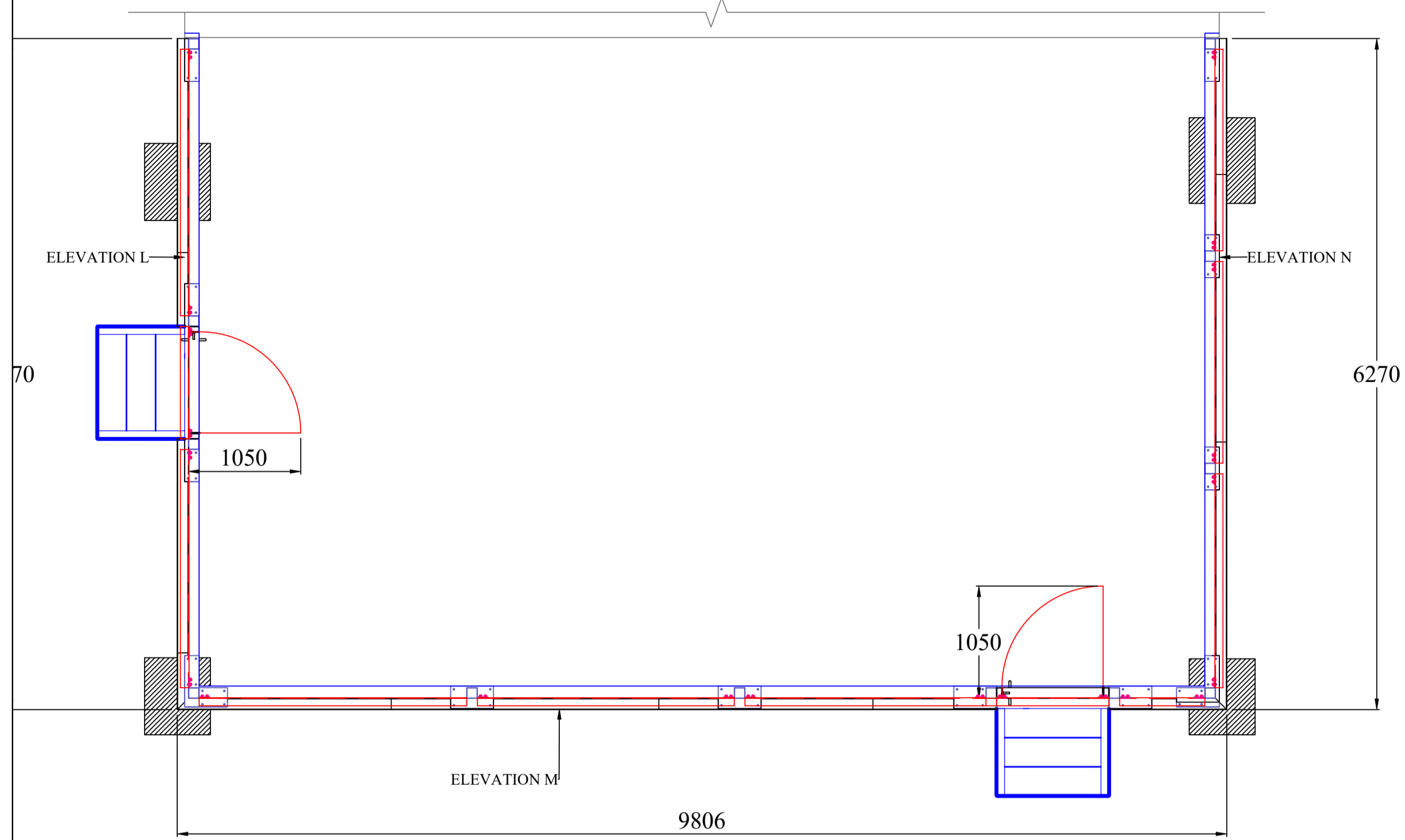
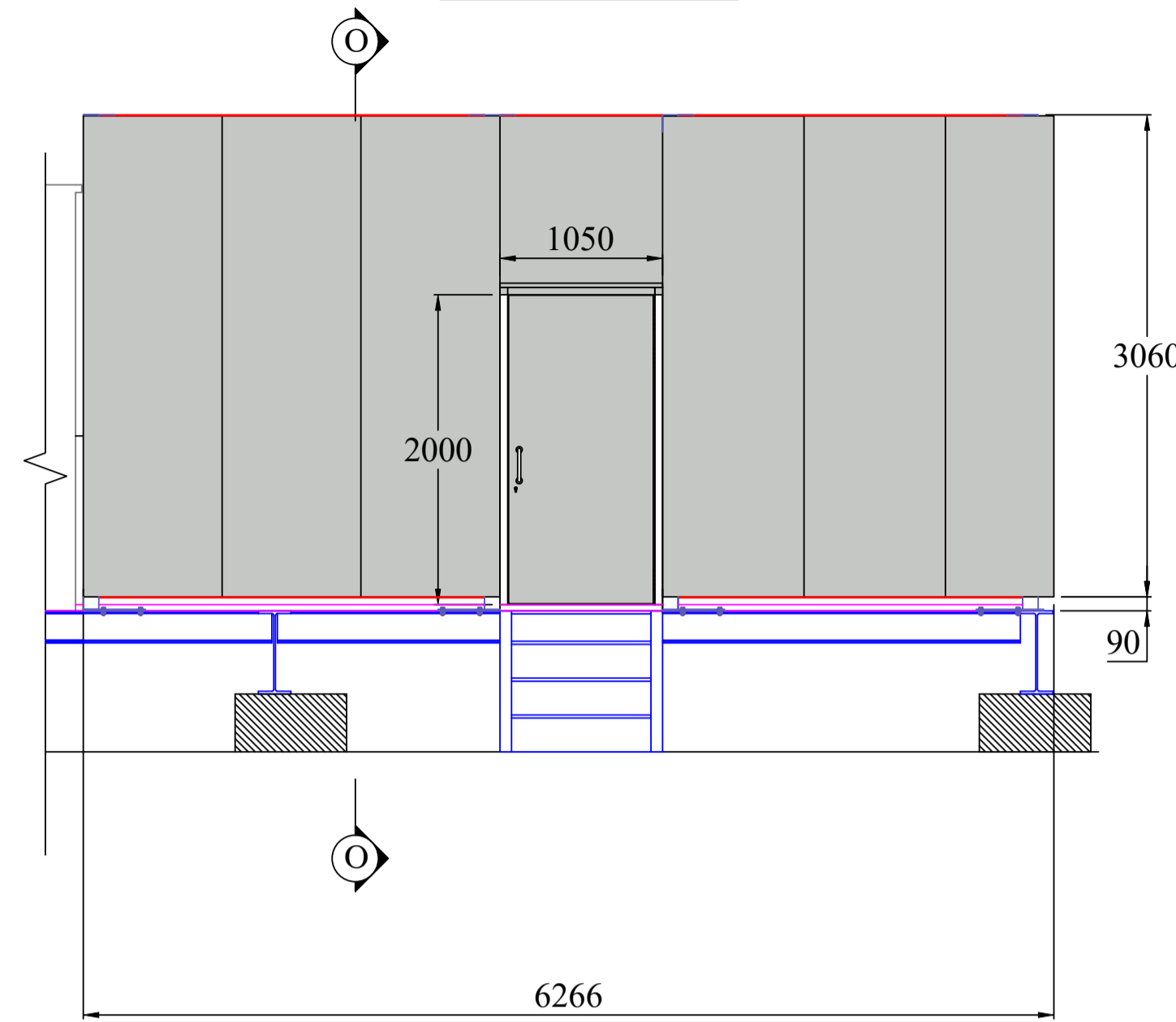


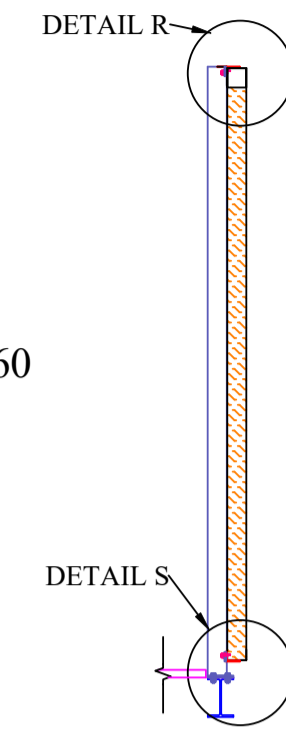
PLAN



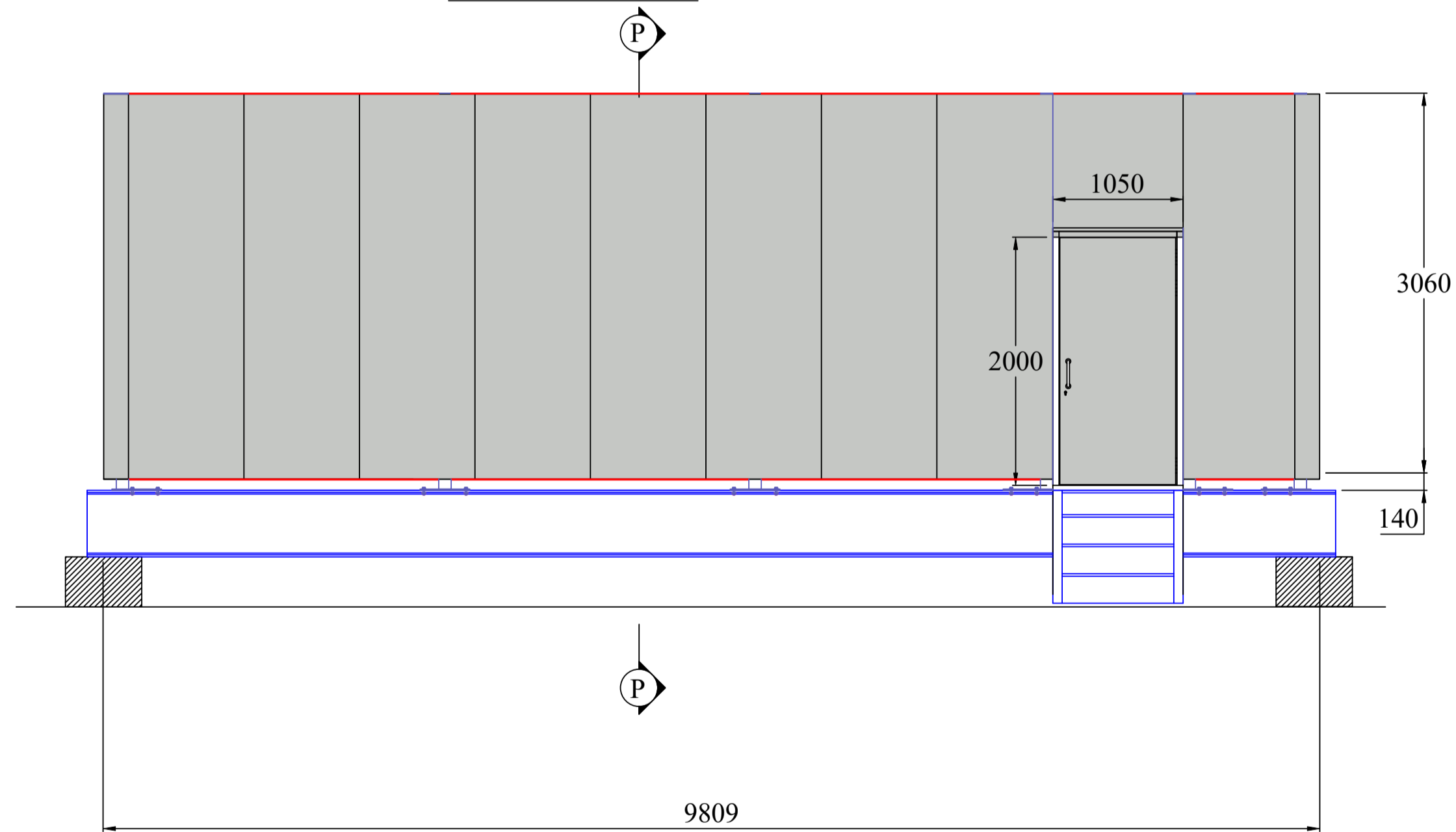
ELEVATION L



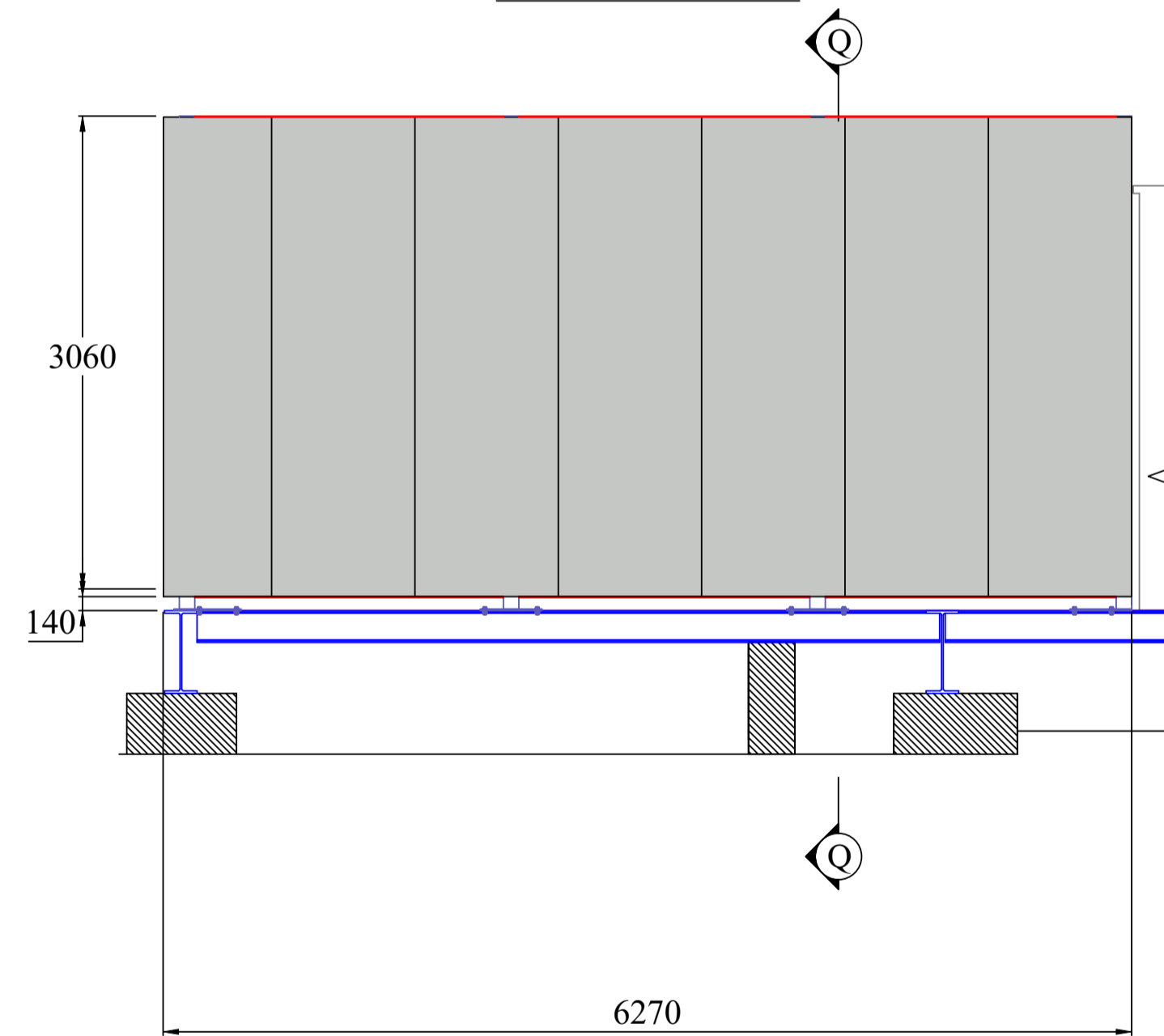
SECTION O-O



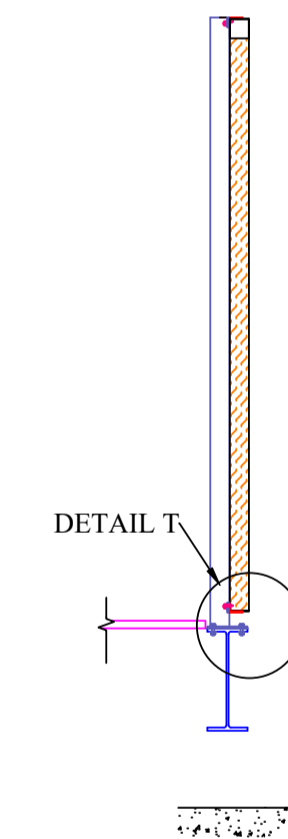
ELEVATION M



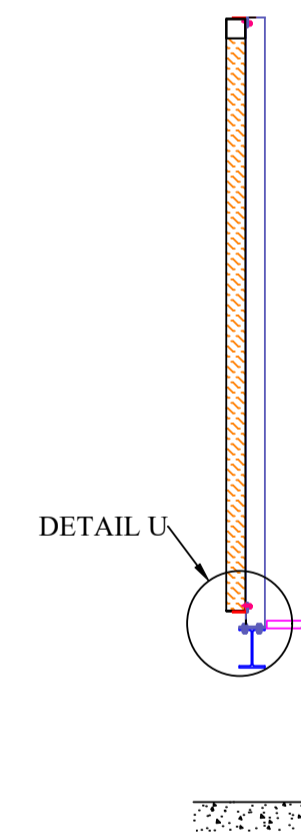
ELEVATION N



SECTION P-P



SECTION Q-Q



NOTE: FOR DETAILS SEE CS8664-107.

SPECIFICATION

Type: ESD100 - 100mm Deep Acoustic Panel
 Outercasing: Pre-galvanised Steel Sheet.
 Inner Skin: 0.7mm Expanded pre-galvanised steel skin having minimum 30% free area.
 Acoustic Infill: 45kg/m³ density mineral wool retained behind glass fibre tissue facing.
 Finish: Painted to RAL7035.
 Door Furniture: Europrofile Cylinder 100mm (50/50), Strike Plate, Stainless Steel 1 1/2 Pairs of Hinges, Euro Profile, 44mm Backset, Deadlock, D handles

| | | |
|-----|---|------------|
| A | Updated inline with architect comments. | 25/09/2023 |
| Rev | Amendment | Date |

First Angle Projection unless stated
 Scale NTS

Title
 Area 2 - 5th Floor Plant Level - Chillers CH-5.01, CH-5.02 & CH-5.03 - Acoustic Panels

Project
 Royal Free Hospital

Client
 Logan Construction Limited

Drawing Number CS8664-105 Rev. A

CONABEARE ACOUSTICS
 11 Chiltern Enterprise Centre,
 Station Road, Theale,
 Berkshire RG7 4AA
 T:0118 930 3650 F:0118 930 3912
 E:sales@conabeare.co.uk

Date: 26/07/2023 Drawn By WD

Issue Approval Checked By sjm

The information contained on this drawing/specification is the property of Conabeare Acoustics Limited and may not be reproduced or disclosed to a third party in any form without the written permission of Conabeare Acoustics Limited.