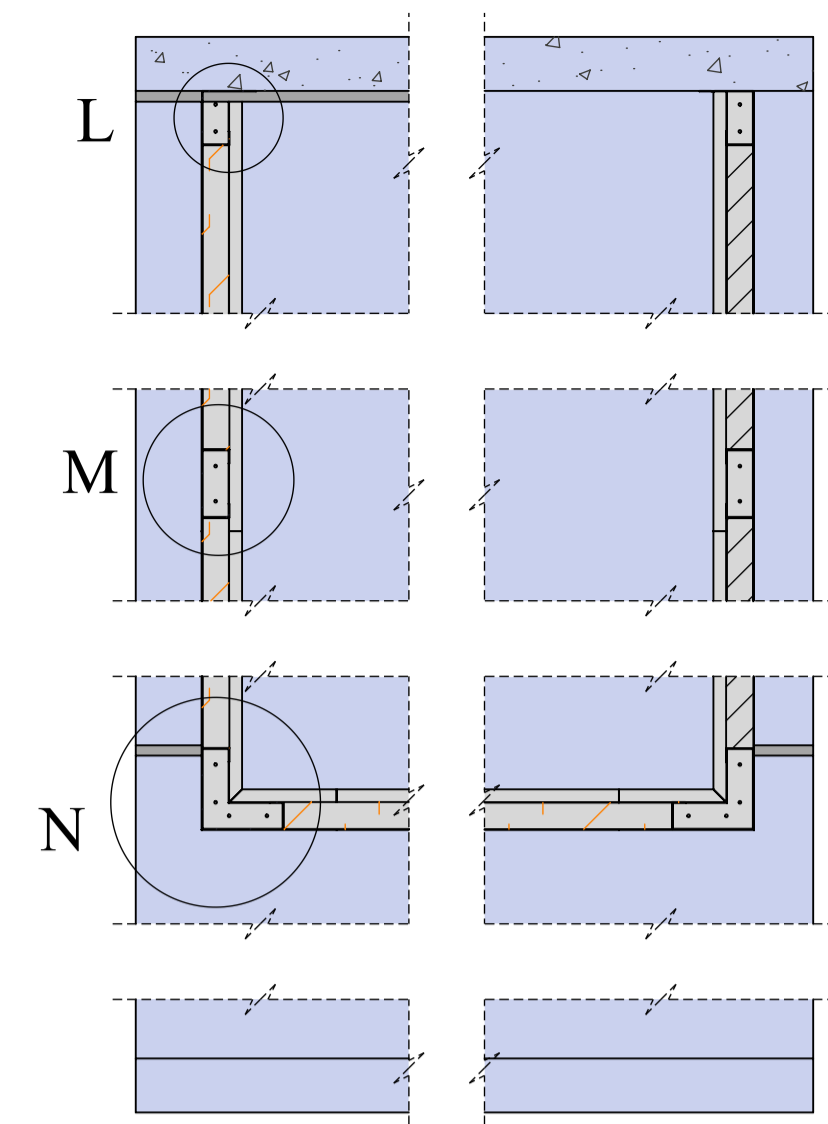
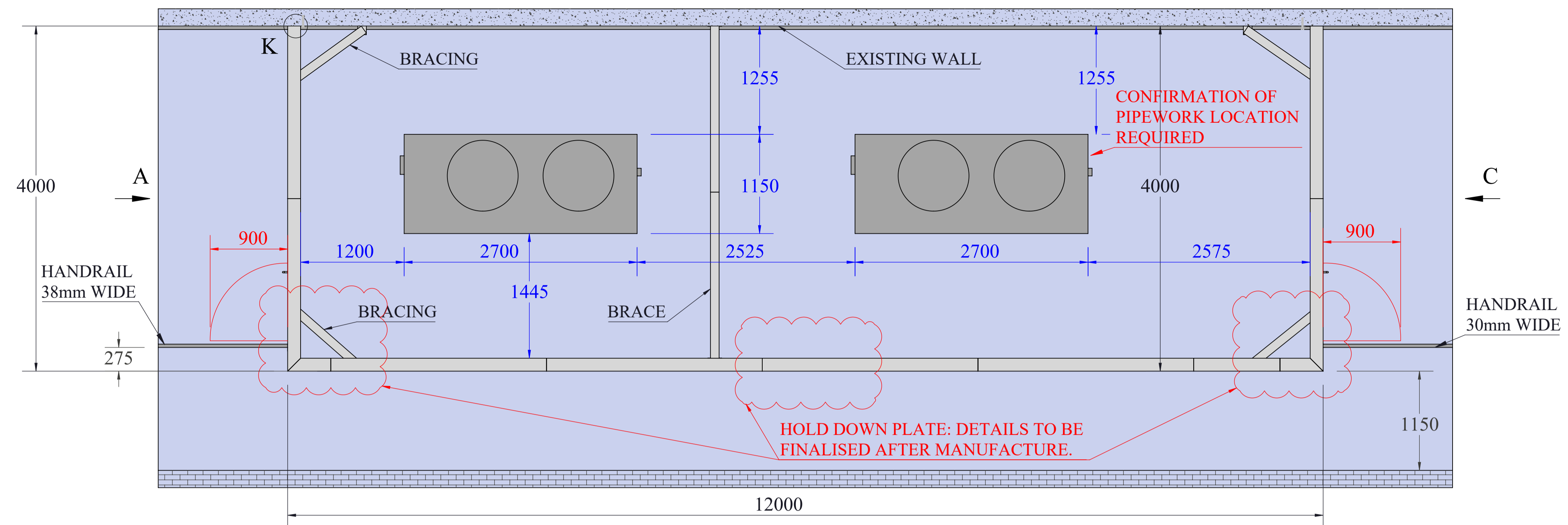


NOTE: CONFIRMATION OF PIPEWORK LOCATION REQUIRED.

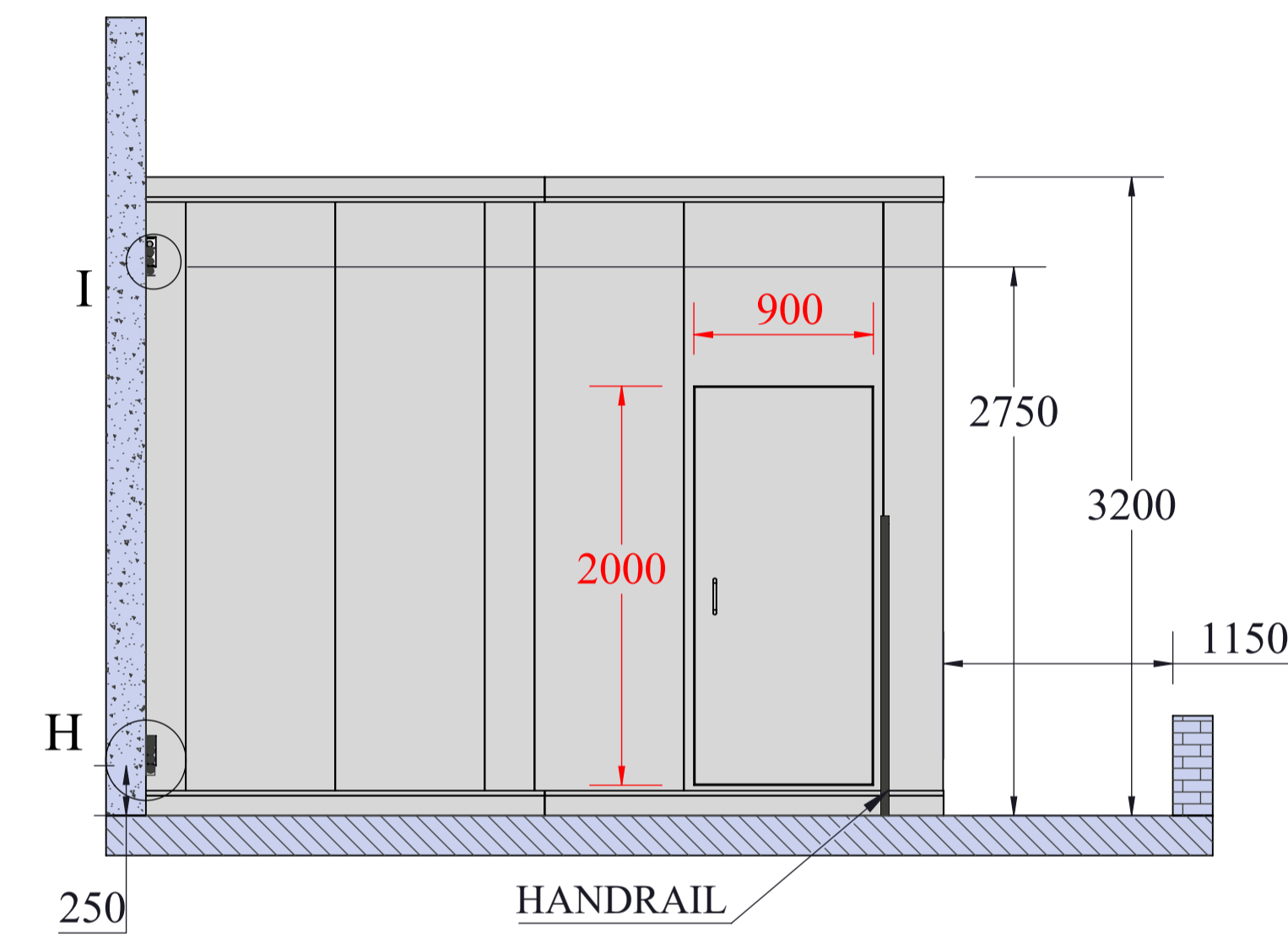
FOR DETAILS SEE CS8664-108



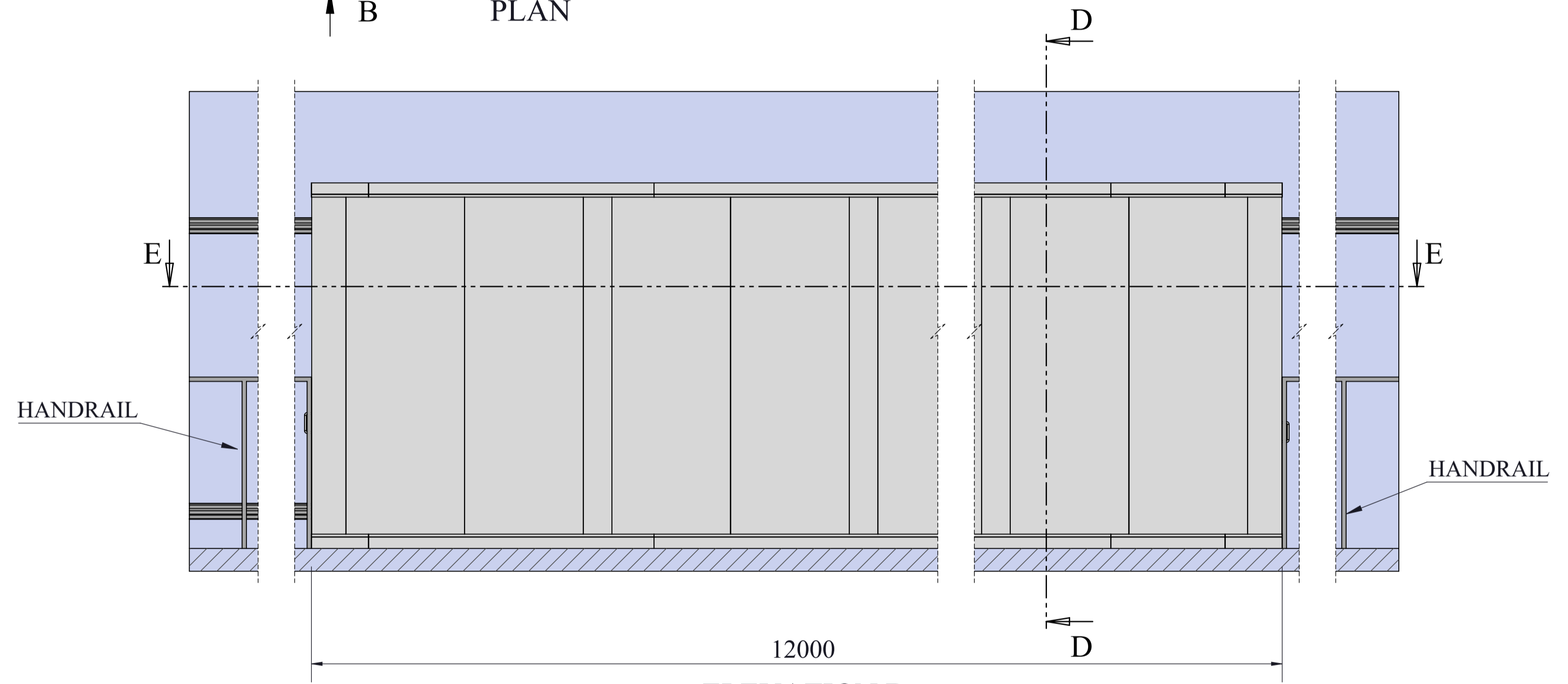
SECTION E-E



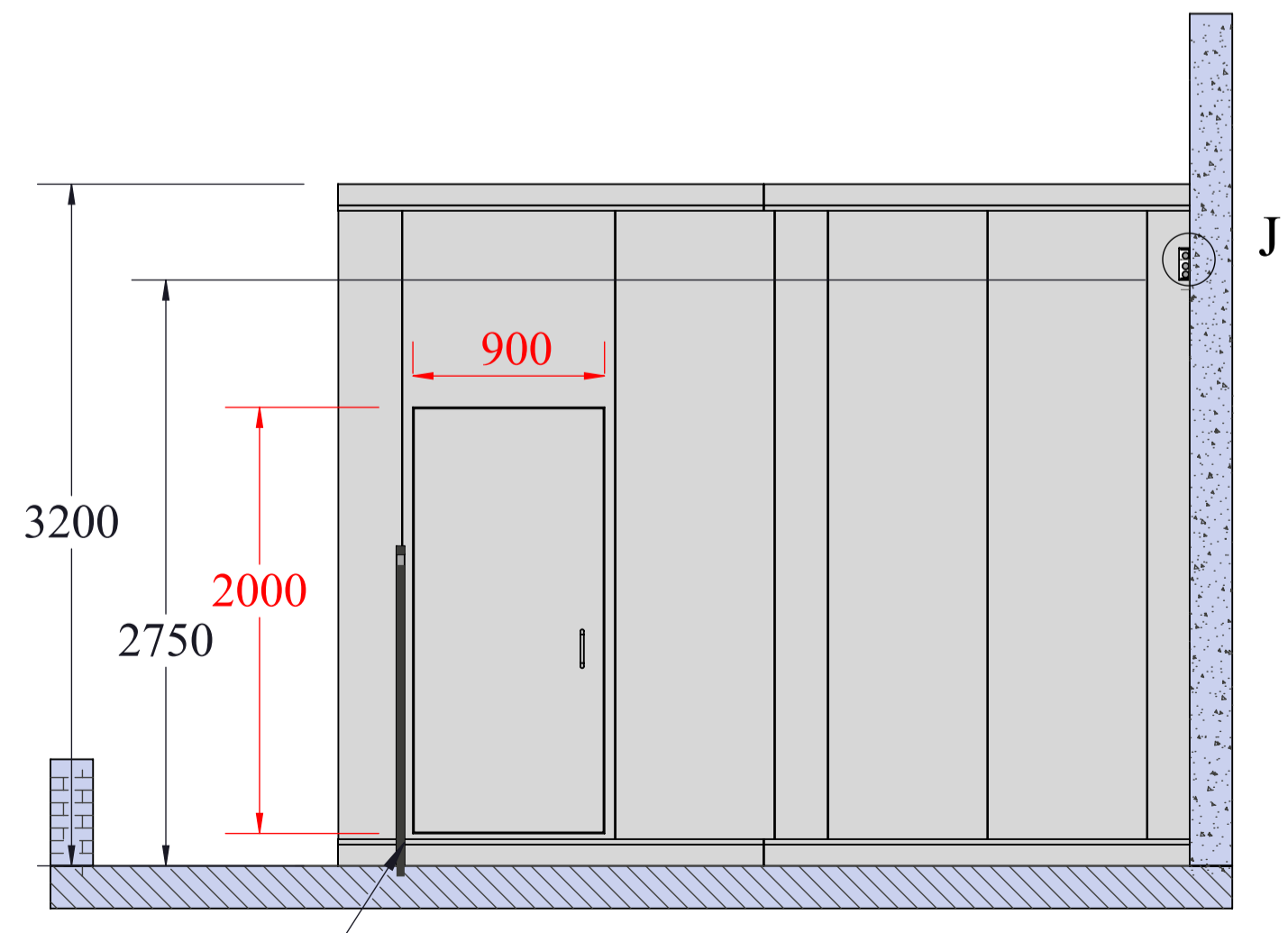
PLAN



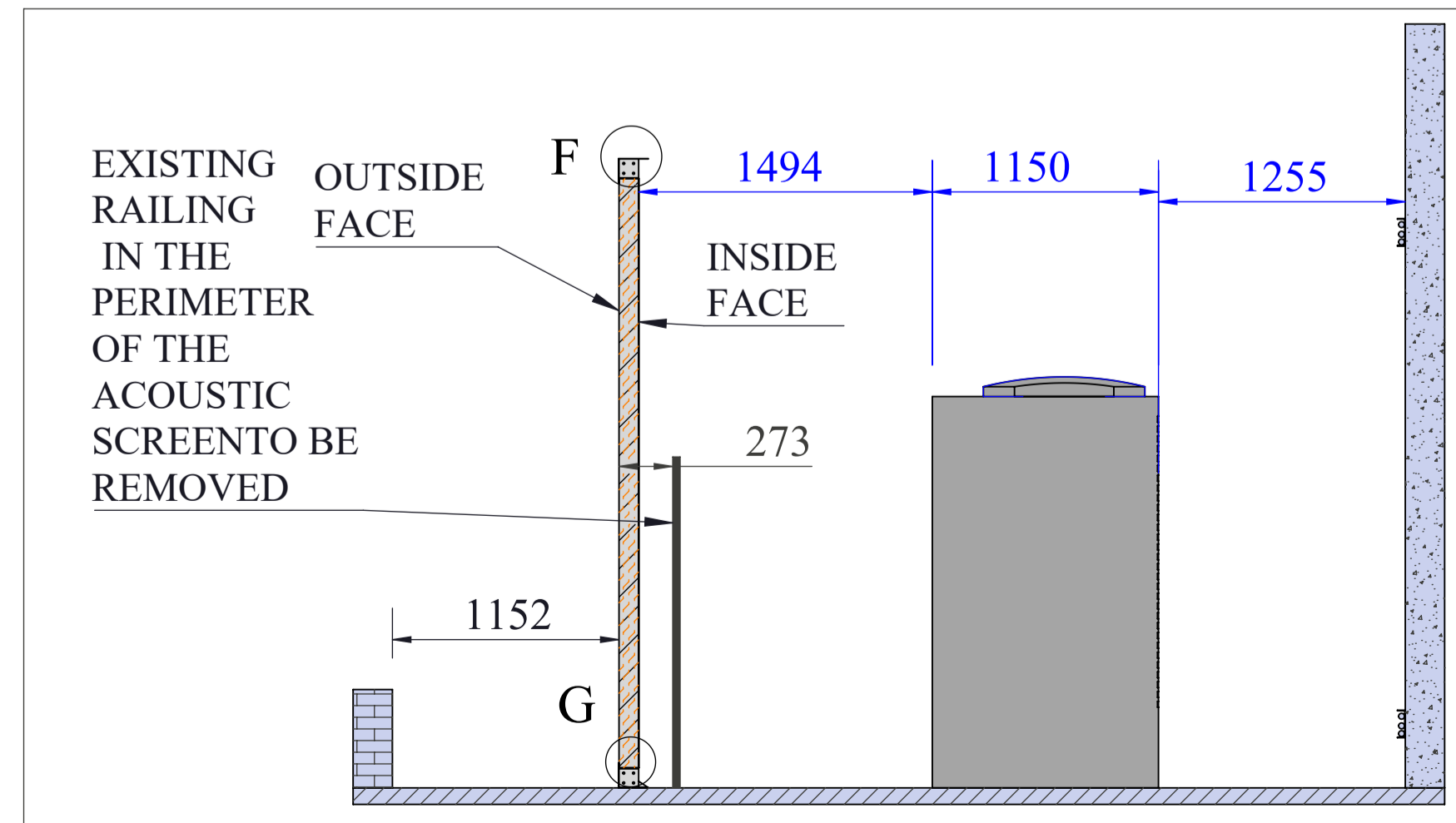
ELEVATION A



ELEVATION B



ELEVATION C



SECTION D-D

SPECIFICATION
 ESD100 Acoustic Screen
 Outer casing: Pre-galvanised Sheet
 Inner Skin: 0.7mm Expanded Pre-galvanised Steel skin having minimum 30% free area.
 Acoustic Infill: 45kg/m³ density mineral wool retained behind glass fibre tissue facing.
 Panel Type: ESD100 - 100mm Thick Acoustic Panel.
 Doors: 2 Off Single Doors
 Door Furniture: 1 1/2 pairs stainless steel hinges, lockable latch & D-handle.
 Finish: Painted to RAL 7035.

Steelwork:
 Base Steels - 2.0mm galvanised sheet with end plates and gussets. To be connected using M8 Hexagon Head Setscrews.
 Top Steels - 2.0mm galvanised sheet with end plates and gussets. To be connected using M8 Hexagon Head Setscrews.
 Steel Posts - 2.0mm galvanised sheet with end plates. To be connected to base steels and top steels using M8 Hexagon Head Setscrews.

Fixings: Self Drilling Screws; Hexagon Head Setscrews; M10 Hexagon Head Setscrews.

Rev	Amendment	Date
C	Modified in line with site meeting.	12/10/2023
B	Updated inline with architect comments.	20/09/2023
A	Site Measure	28/07/2023

First Angle Projection unless stated
 Scale NTS

Title
 Acoustic Screen 01 - Area 1 - 4th Floor
 Plant Level - Chillers CH-4.01/CH-4.02

Project
 Royal Free Hospital

Client
 Logan Construction Limited

Drawing Number CS8664-100 Rev. C

CONABEARE ACOUSTICS
 11 Chiltern Enterprise Centre,
 Station Road, Theale,
 Berkshire RG7 4AA
 T:0118 930 3650 F:0118 930 3912
 E:sales@conabeare.co.uk

Date: 24/07/2023 Drawn By WD

Issue Approval Checked By sjm

The information contained on this drawing/specification is the property of Conabeare Acoustics Limited and may not be reproduced or disclosed to a third party in any form without the written permission of Conabeare Acoustics Limited.