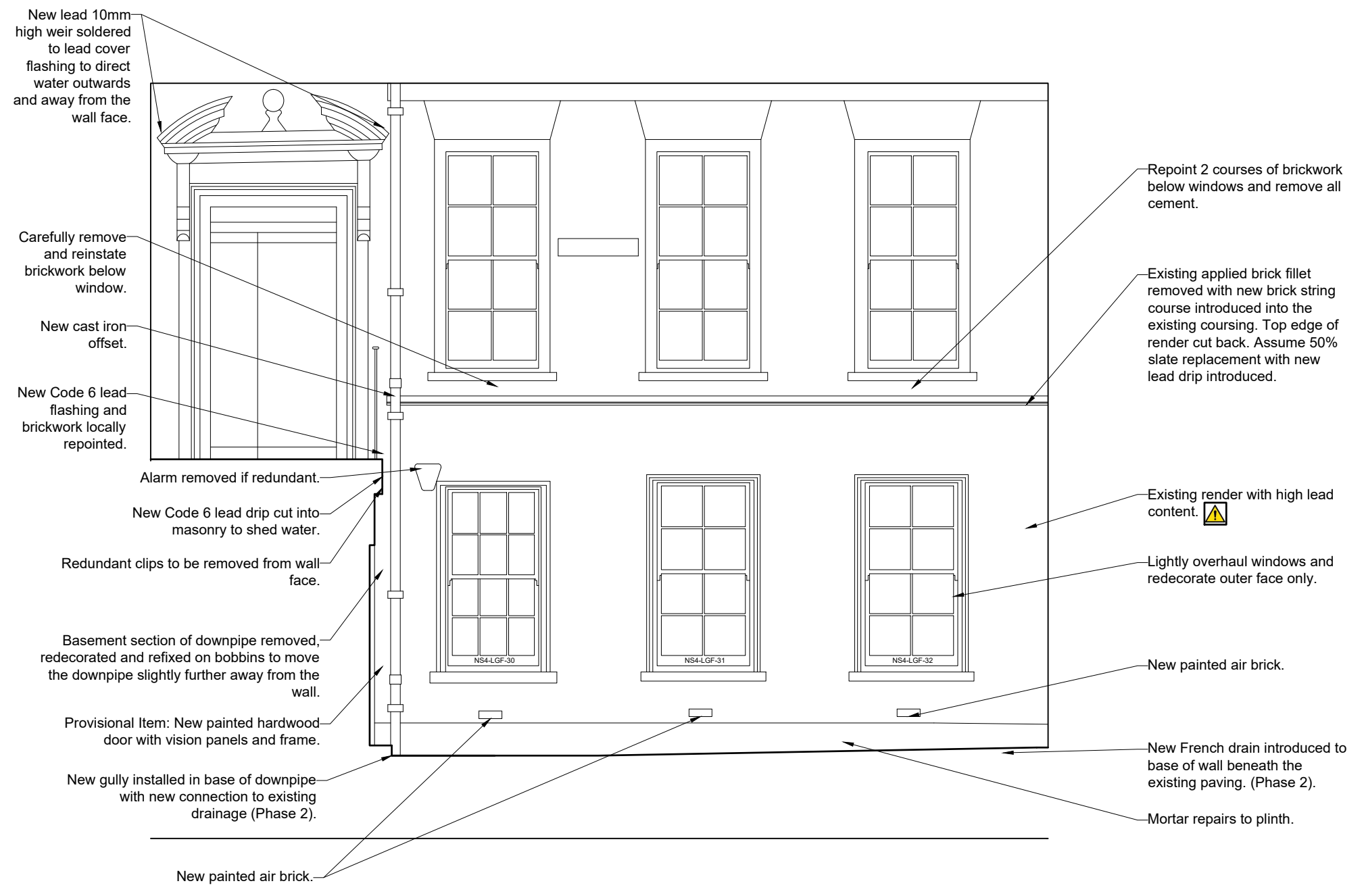


NOTES
 Cross refer to Drg No 400.001 for new brick string course detail.

Render retained. Allow for 10% render repair/replacement in small areas.
 New render for repair: 1 part Natural Hydraulic Lime - NHL 2.0 mixed 2 parts yellow-brown quartz sand <1.18mm.

Paint retained but allow for 10% removal where failing. Prepare and redecorate all painted surfaces including window cills at basement level with Keim Soldalit. Colour: To match existing.

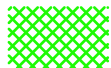



No 4 looking west.




No 4 looking east.

KEY

-  Area of render known to require replacement.
-  Timber repair



Rev A - 17.03.24 Additional notes added.

Scale 1:50	Job LONDON, Lincoln's Inn New Square	
Drg No 0400/002/A	Title Elevation of No4	
Date 21.02.2024	This document is copyright and the property of Chantrey Conservation Architects Ltd. Any copies of this drawing made by any method must also include a copy of this legend. ©Chantrey Conservation Architects Ltd	