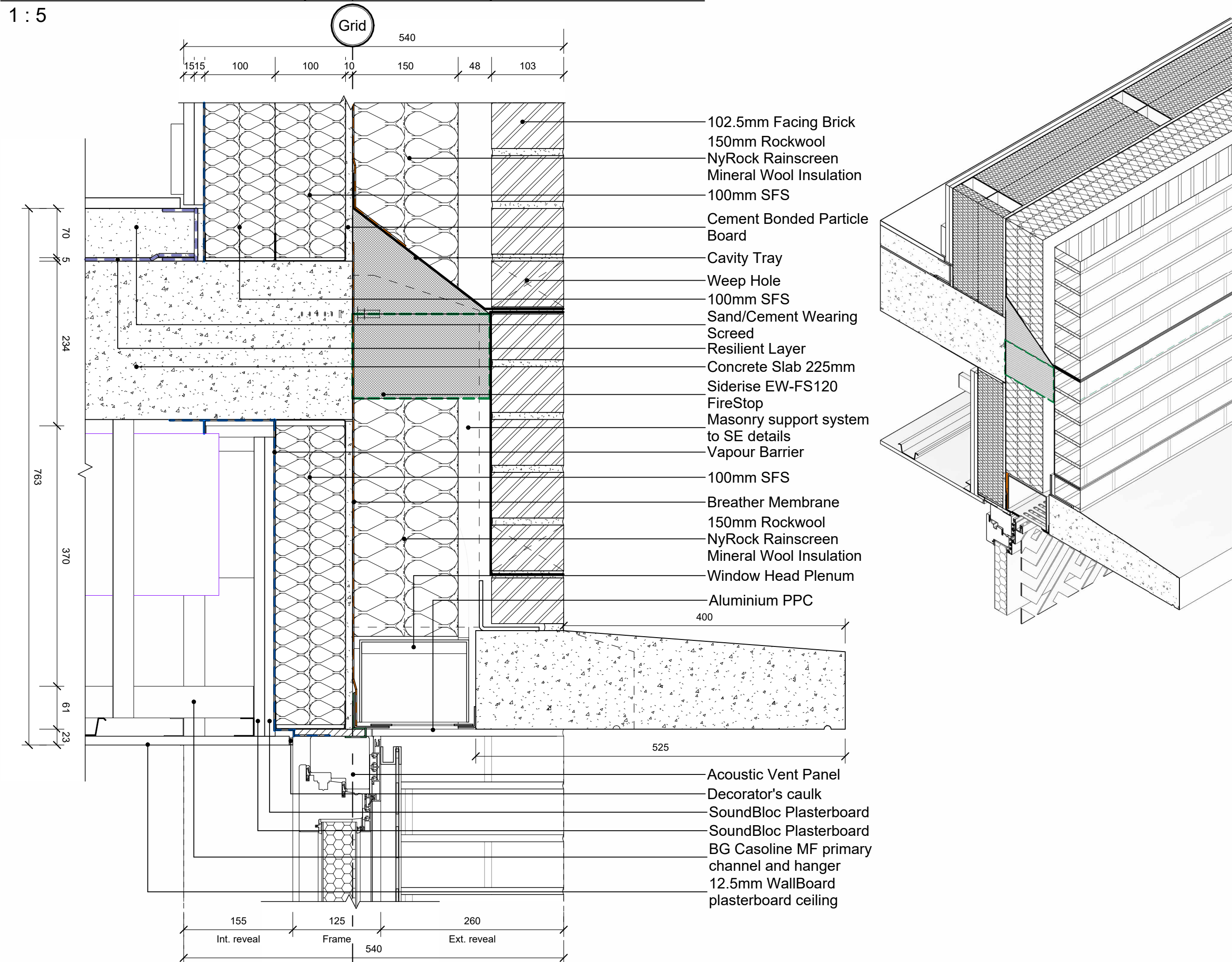


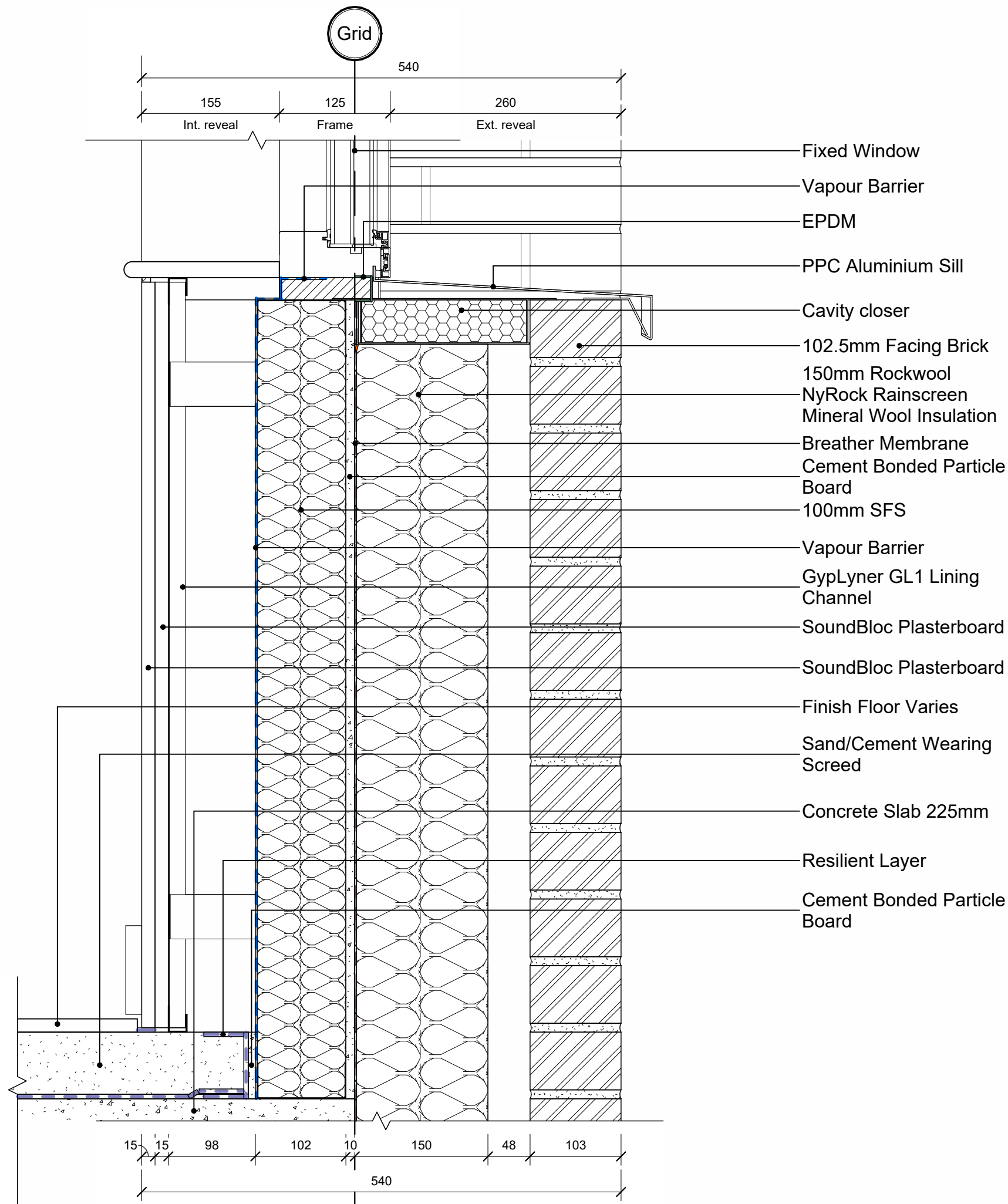
eo.01 - Window head (600 from slab)

1 : 5



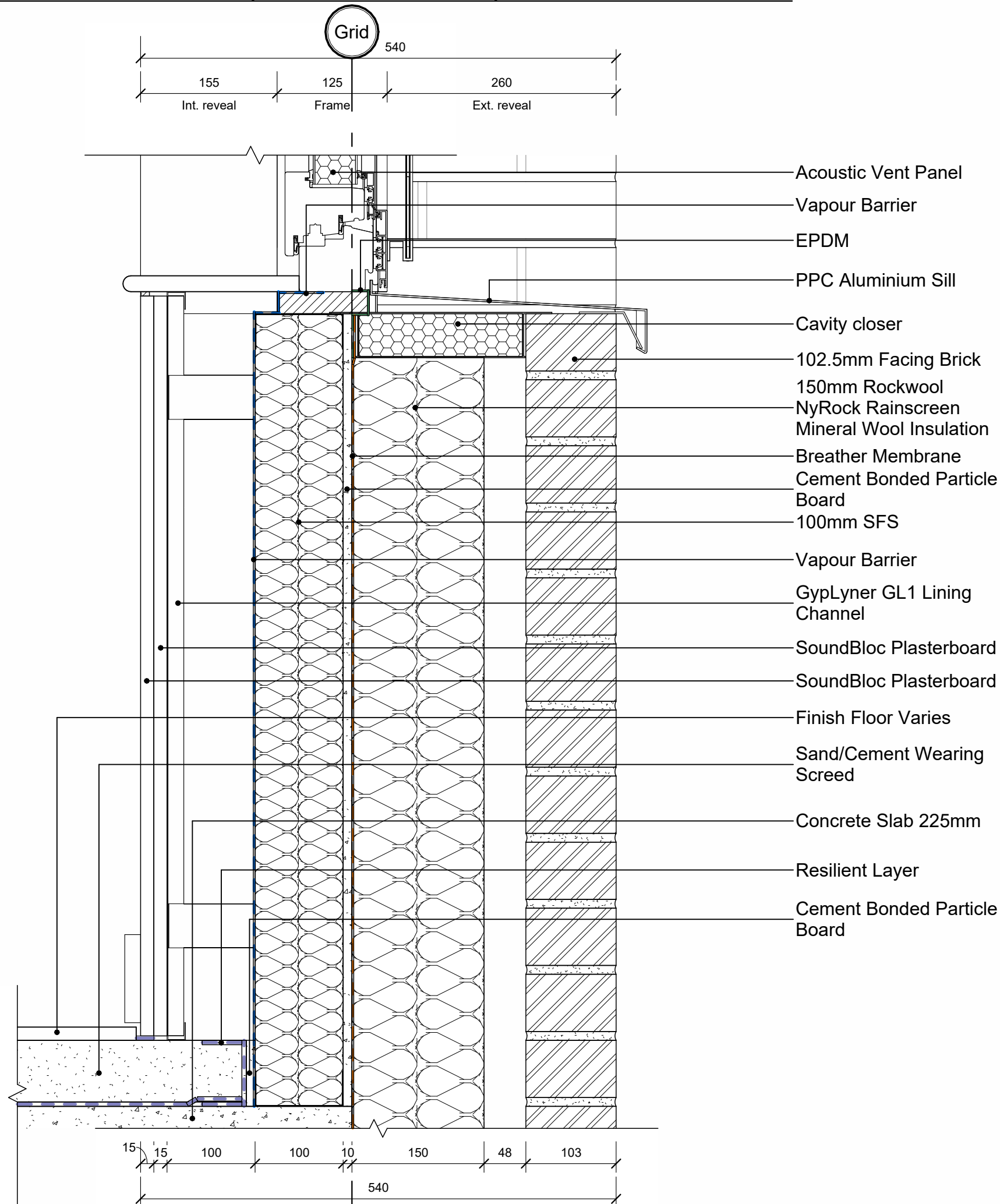
eo.03 - Opening vent head (600 from slab)

1 : 5



eo.02 - Window sill (260mm reveal)

1 : 5



eo.04 - Opening vent sill (260mm reveal)

1 : 5

Do not scale from this drawing

© Brookes Architects Limited (BAL), all rights reserved.

This drawing has been prepared for the use of BAL's client specifically for the site titled below. It may not be used, modified, reproduced or relied upon by third parties.

Do not scale from this drawing. All areas are approximate. All dimensions are to be verified on site prior to construction. Responsibility for the reproduction of this drawing lies with the recipient to check that all information has been replicated in full when compared with the original.

This drawing must be read in conjunction with all other relevant consultants' information.

Any discrepancies and/or ambiguities within this drawing, or between it and information given elsewhere, must be reported immediately to BAL for clarification before proceeding.

All works are to be carried out in accordance with current British Standards, Building Regulations and relevant Codes of Practice.

Refer to the Construction (Design and Management) documentation where applicable. It is assumed that all works will be carried out by a competent contractor working, where necessary, to an approved method statement.

0m 0.1m 0.2m 0.3m 0.4m 0.5m

Visual Scale 1:5

PRELIMINARY

Rev	Status	Description	Date	Issued	Drawn/Chk
P1	Pr	Preliminary Issue	25.07.23	TN/TL	

Myco

Project No.

5361

Project

Acorn House  
Gray's Inn Road  
London, WC1X 8DP

Drawing

External Opening Details  
Sheet 1

Scale	Date	Drawn	Checked
1 : 5@A1	July '23	OS	TL

BrookesArchitects

Unit 1 - 56 Glenham Road  
London SW13 9JJ

T 020 8487 1223

www.brookesarchitects.co.uk

5361-BAL-XX-ZZ-DR-A-31-0201	Revision P1 Pr Status
-----------------------------	--------------------------------