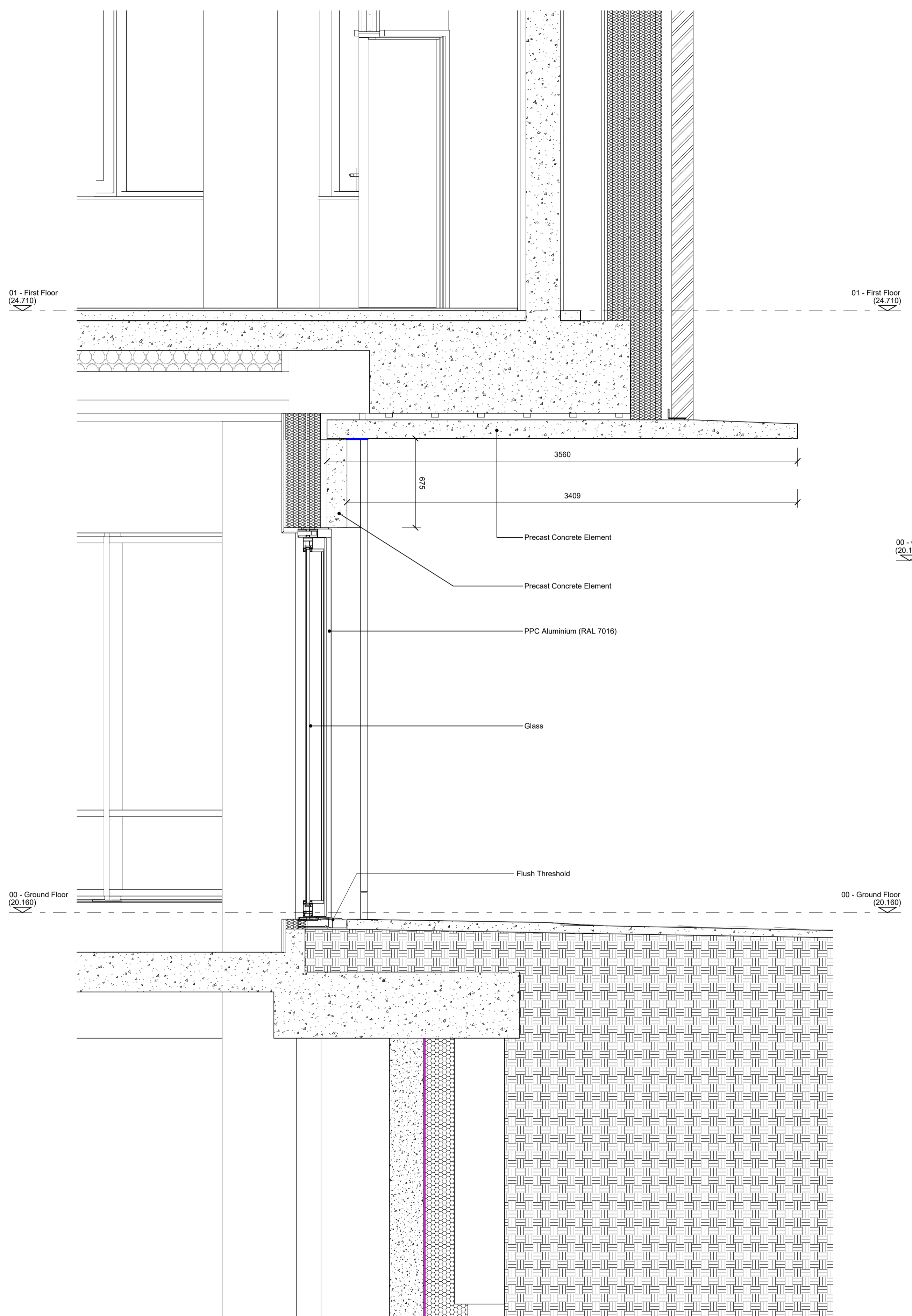
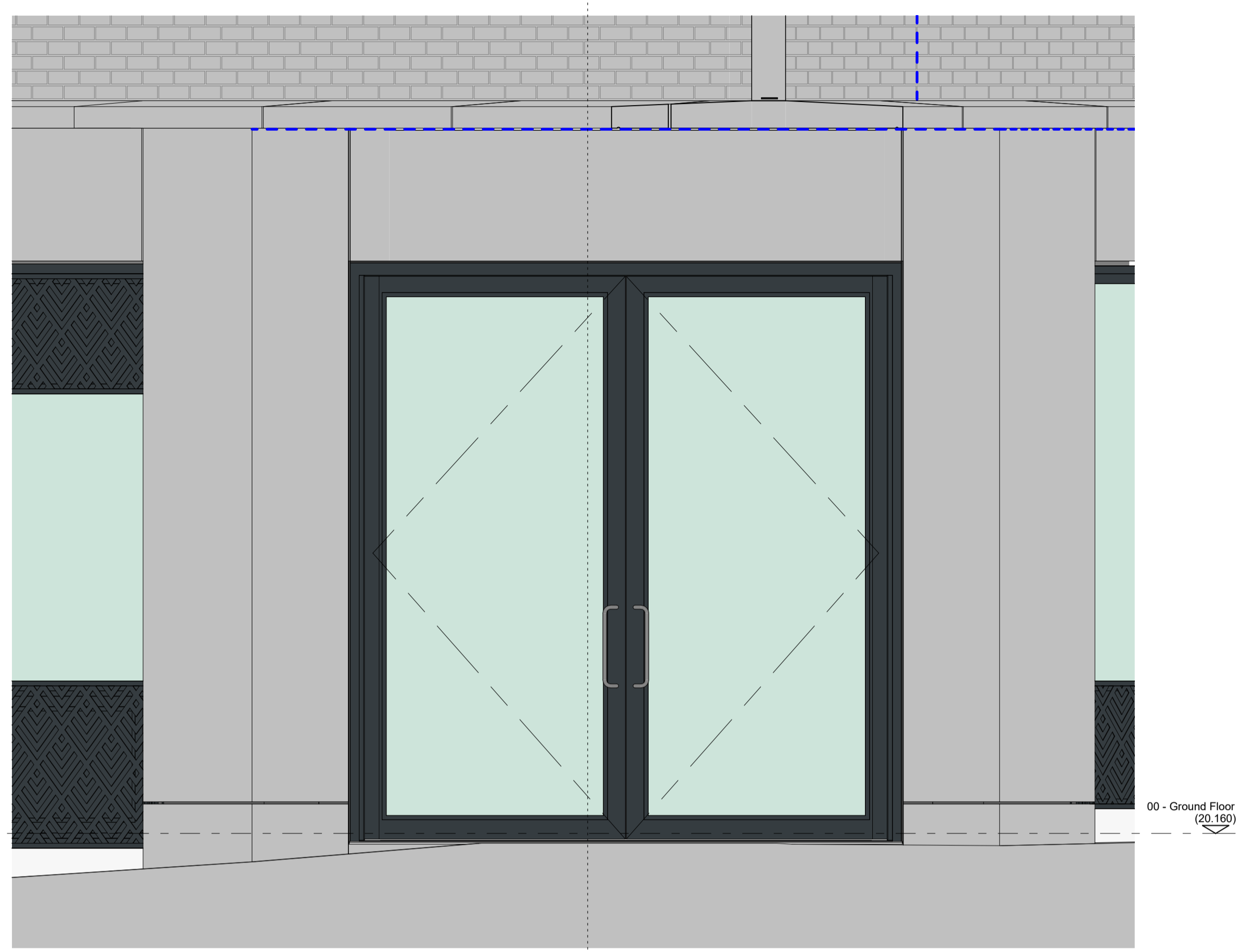


Do not scale from this drawing

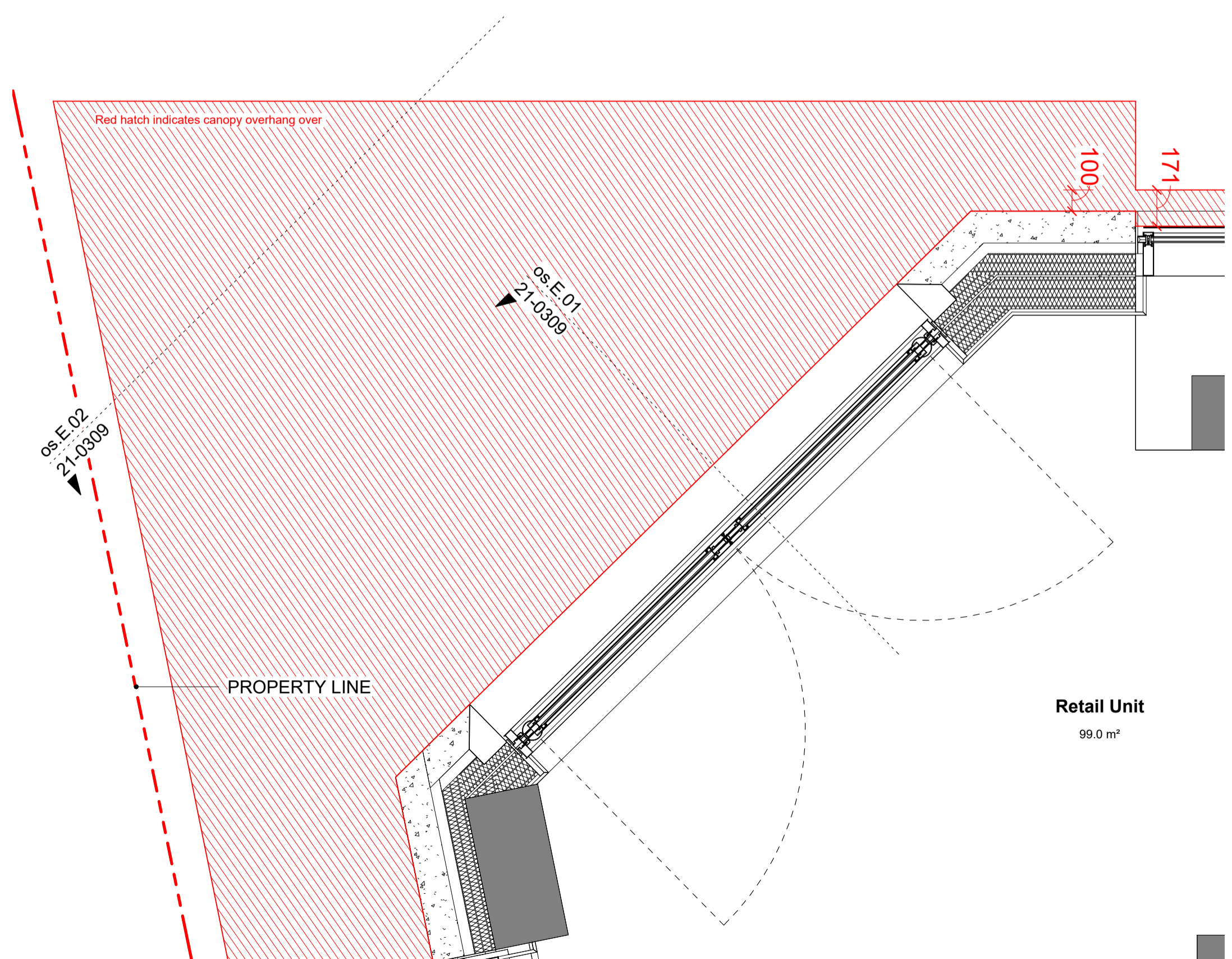
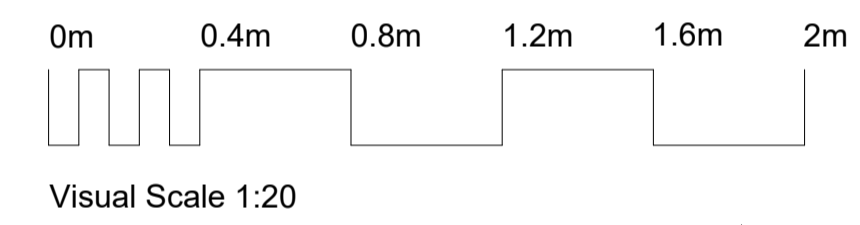
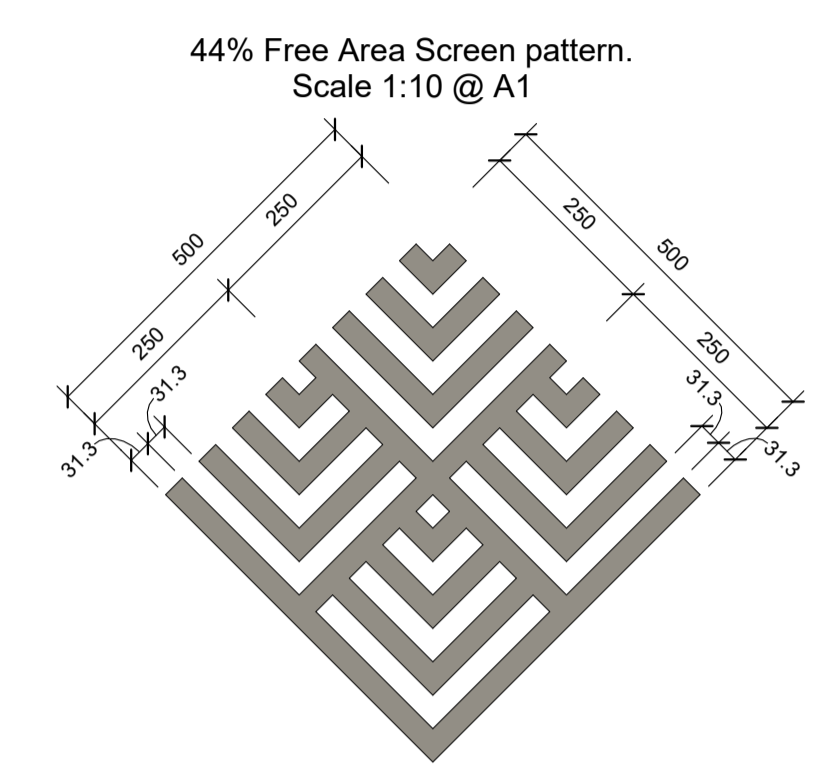
© Brookes Architects Limited (BAL), all rights reserved.  
 This drawing has been prepared for the use of BAL's client specifically for the site titled below. It may not be used, modified, reproduced or relied upon by third parties.  
 Do not scale from this drawing. All areas are approximate. All dimensions are to be verified on site prior to construction. Responsibility for the reproduction of this drawing lies with the recipient to check that all information has been replicated in full when compared with the original.  
 This drawing must be read in conjunction with all other relevant consultants' information.  
 Any discrepancies and/or ambiguities within this drawing, or between it and information given elsewhere, must be reported immediately to BAL for clarification before proceeding.  
 All works are to be carried out in accordance with current British Standards, Building Regulations and relevant Codes of Practice.  
 Refer to the Construction (Design and Management) documentation where applicable. It is assumed that all works will be carried out by a competent contractor working, where necessary, to an approved method statement.



os.E.01 - Section E - Retail Entrance  
1 : 20



os.E.02 - Elevation E - Retail Entrance  
1 : 20



os.E.03 - Plan E - Retail Entrance  
1 : 20

PLANNING

Rev	Status	Description	Issued	Drawn/Chk
P3	PL	RAL colour note change.	12.02.24	AW
P2	PI	Drawings updated and adapted for planning conditions submission.	09.02.24	AW
P1	Pr	Preliminary Issue	26.05.23	TN/TL

Client  
 Myco  
 Project No.  
 5361  
 Project  
 Acorn House  
 Gray's Inn Road  
 London, WC1X 8DP  
 Drawing  
 Oversailing + Shopfront  
 Sketch E  
 Plan, Section + Elevation  
 Scale  
 1:20@A1  
 Date  
 May '23  
 Drawn  
 TN  
 Checked  
 TL

Brookes Architects  
 Unit 1 - 56 Glenham Road  
 London SW13 9J  
 T 020 8487 1223  
 www.brookesarchitects.co.uk

5361-BAL-XX-XX-DR-A-21-0309  
 Revision  
 P3  
 PL  
 Status