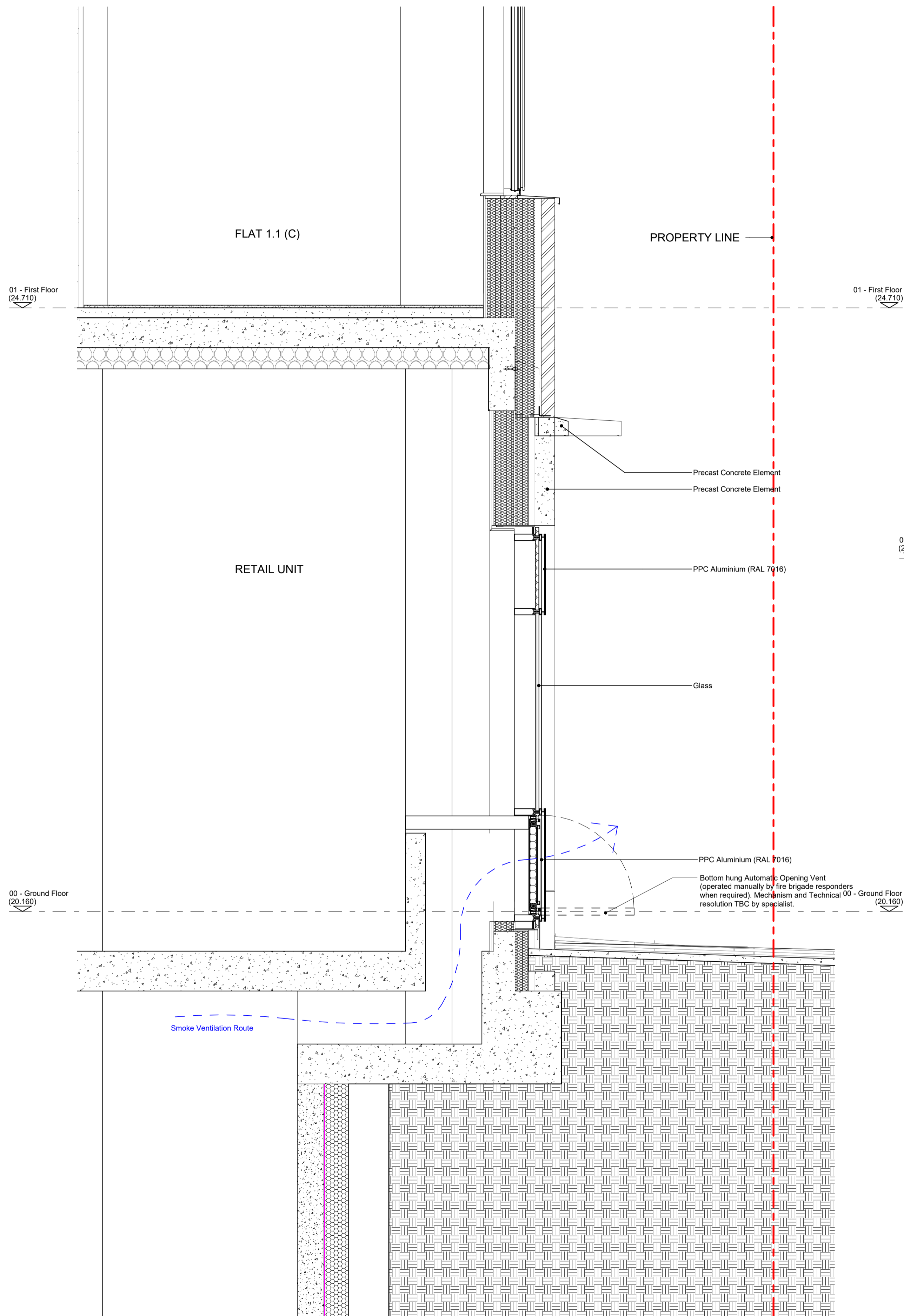
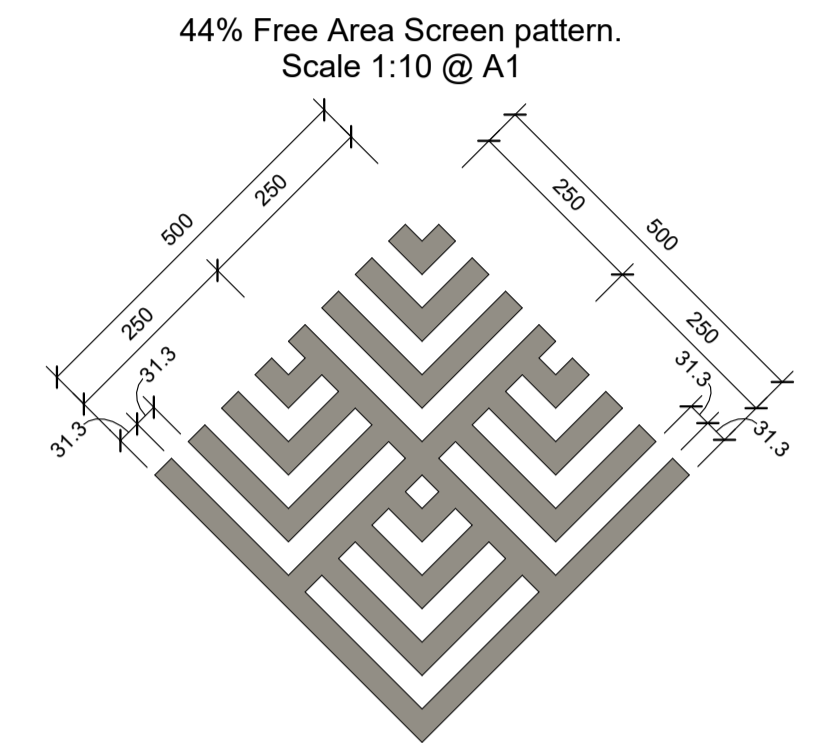
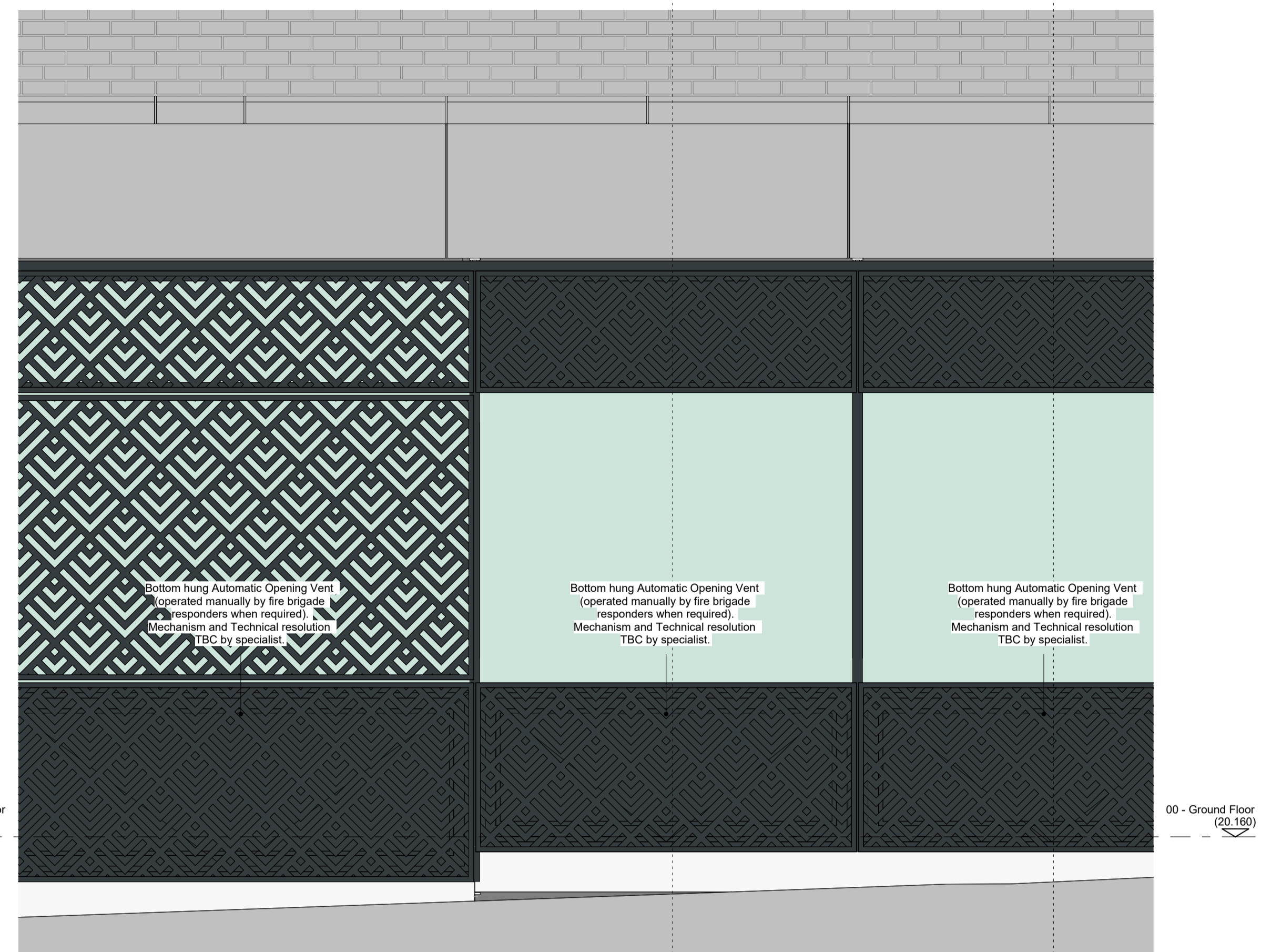


Do not scale from this drawing

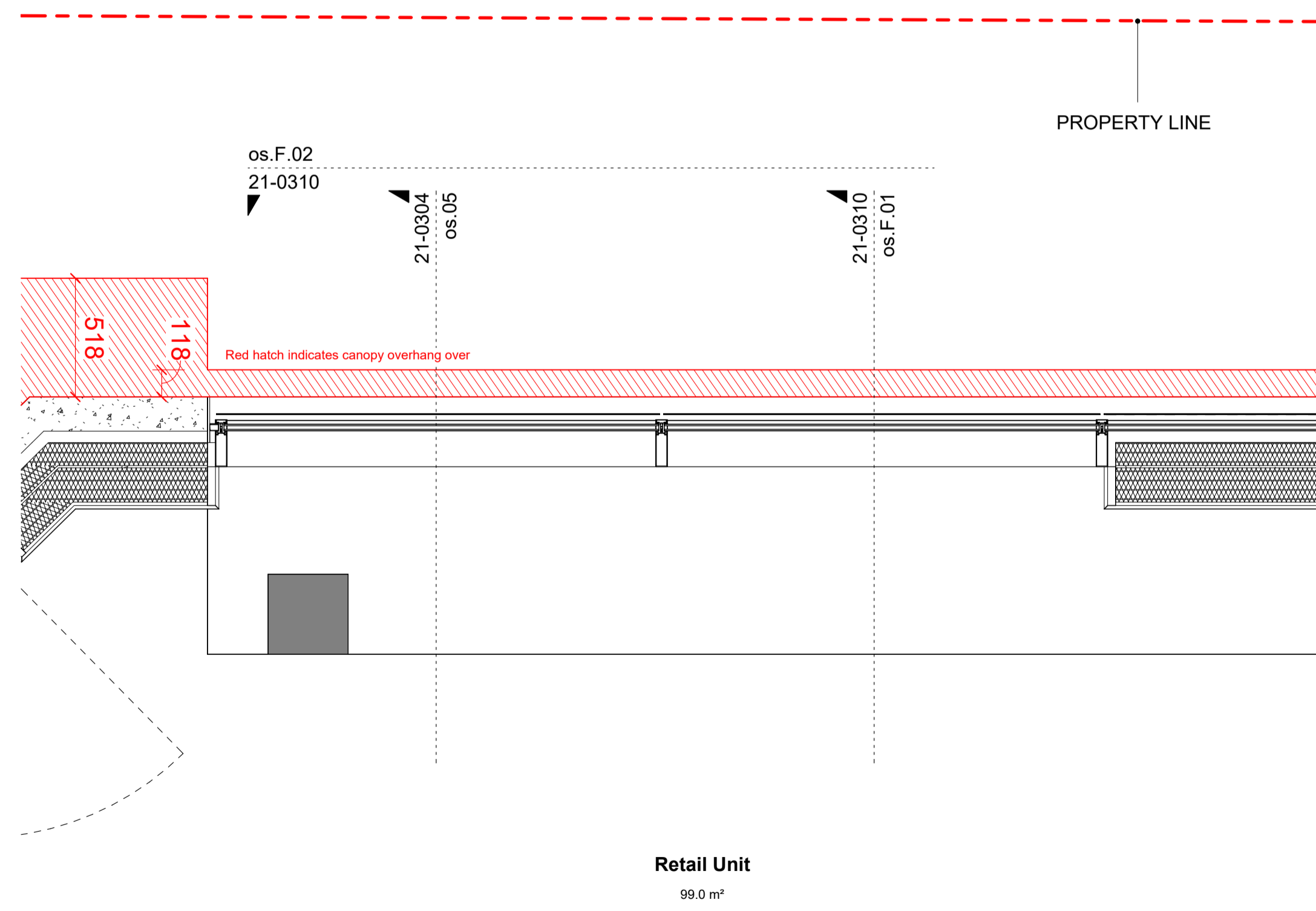
© Brookes Architects Limited (BAL), all rights reserved.
 This drawing has been prepared for the use of BAL's client specifically for the site titled below. It may not be used, modified, reproduced or relied upon by third parties.
 Do not scale from this drawing. All areas are approximate. All dimensions are to be verified on site prior to construction. Responsibility for the reproduction of this drawing lies with the recipient to check that all information has been replicated in full when compared with the original.
 This drawing must be read in conjunction with all other relevant consultants' information.
 Any discrepancies and/or ambiguities within this drawing, or between it and information given elsewhere, must be reported immediately to BAL for clarification before proceeding.
 All works are to be carried out in accordance with current British Standards, Building Regulations and relevant Codes of Practice.
 Refer to the Construction (Design and Management) documentation where applicable. It is assumed that all works will be carried out by a competent contractor working, where necessary, to an approved method statement.



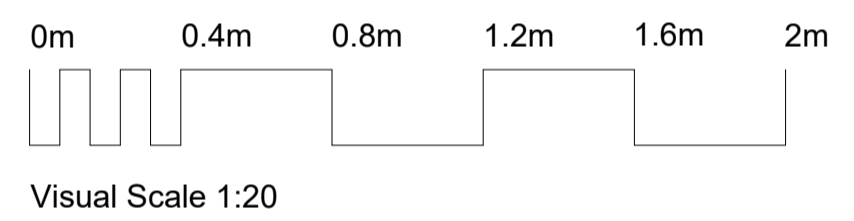
os.F.01 - Section F - Retail Unit Swinton St
 1 : 20



os.F.02 - Elevation F - Retail Unit Swinton St
 1 : 20



os.F.03 - Plan F - Retail Unit Swinton St
 1 : 20



PLANNING

Rev	Status	Description	Issued	Drawn/Chk
P3	PL	RAL colour note change.	12.02.24	AW
P2	PI	Drawings updated and adapted for planning conditions submission.	09.02.24	AW
P1	Pr	Preliminary Issue	26.05.23	TN/TL

Client
 Myco
 Project No.
 5361
 Project
 Acorn House
 Gray's Inn Road
 London, WC1X 8DP

Drawing
 Oversailing + Shopfront
 Sketch F
 Plan, Section + Elevation
 Scale: 1:20@A1
 Date: May '23
 Drawn: TN
 Checked: TL

Brookes Architects
 Unit 1 - 56 Glenham Road
 London SW13 9J
 T 020 8487 1223
 www.brookesarchitects.co.uk

5361-BAL-XX-XX-DR-A-21-0310
 Revision P3
 PL
 Status