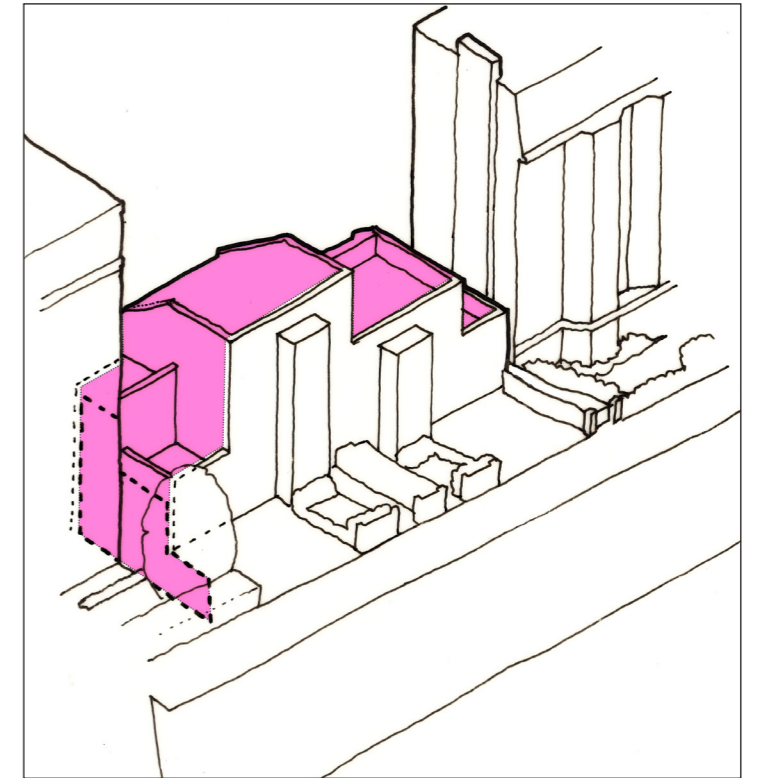
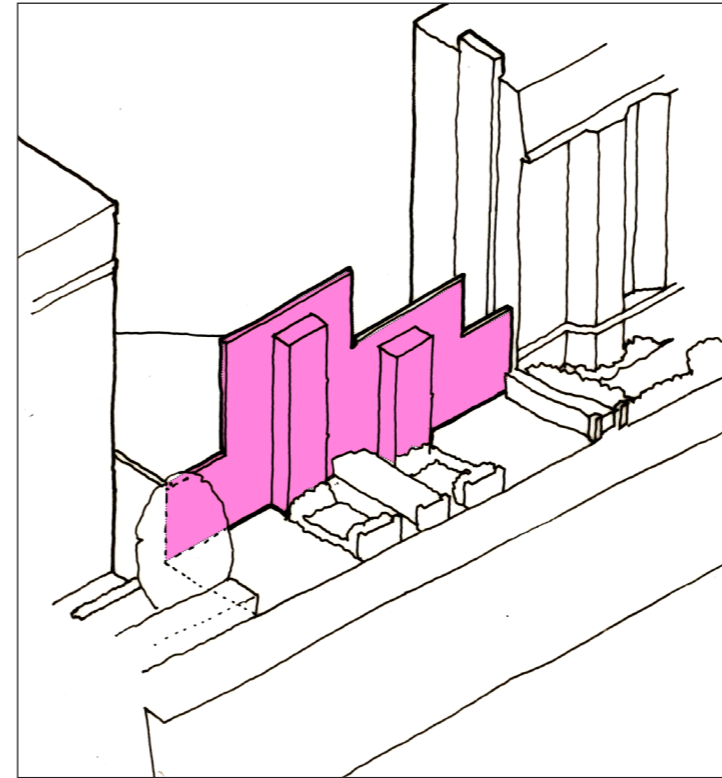
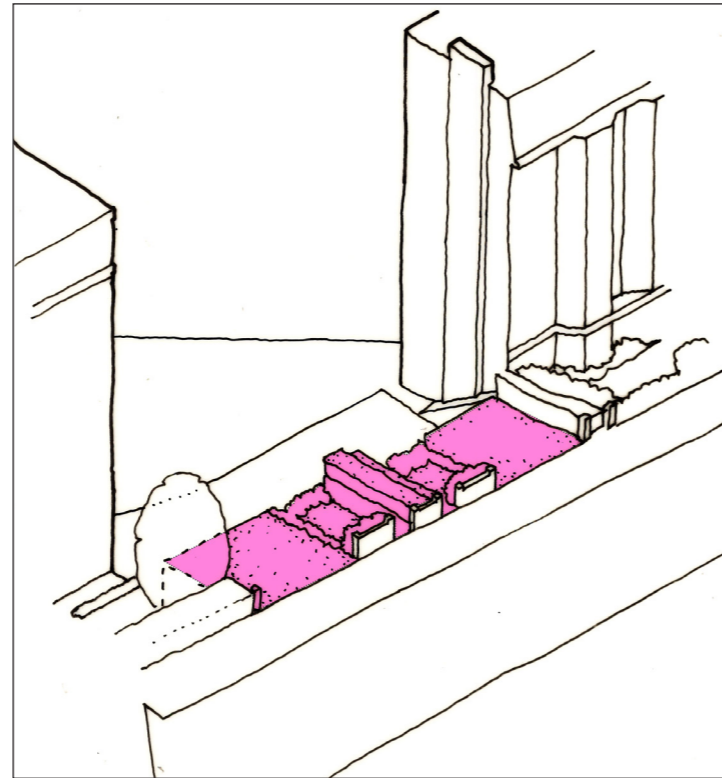
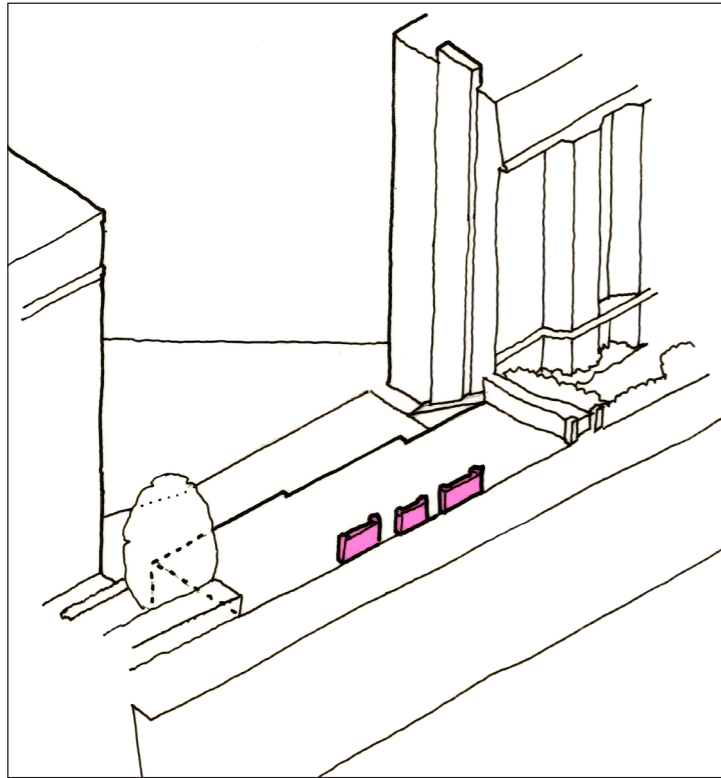


# 04 Design Response

**Repairing the Gap**

The scheme design has 4 key steps



**1 - STRENGTHEN THE BOUNDARY**

There is no definition to the boundary of the site. Adding a low boundary wall in traditional brickwork helps to define the paving line

**2 - ADD GREENERY**

Adding planting and greenery to the front gardens make a positive contribution to the sites bio-diversity and the streetscape.

**3 - INFILL THE GAP**

The gap between the mansion blocks is infilled with two houses in red brick, each with a bay window. The stepped houses follow the slope of the site.

**4 - MAXIMISE SITE USAGE**

The usage of the site is maximised by excavation to link the houses to the garden level at the rear. The form to the rear extends as much as possible within the Daylight and Sunlight considerations.

**Completing the Street**

The scheme proposes two residential dwellings that follow the line of the existing garages. These dwellings step down the road to follow the fall of the sloping site. Each dwelling uses the site's topography to create a ground floor that maximises daylight. The windows reflect the use of the internal rooms.



PROPOSAL



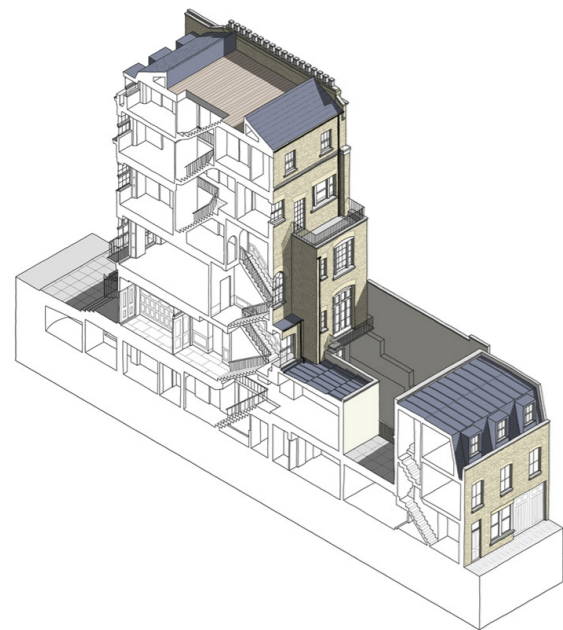
EXISTING SITUATION

## Fronts and Backs

Edwardian town houses often showed a marked contrast between the formal front and the informal rear elevations. The front façade typically adhered to a more symmetrical layout, featuring ornate detailing, bay windows, and decorative elements reflecting the era's architectural style.

In contrast, the rear elevation often adopted a more relaxed approach, with simpler designs, larger windows, and spacious layouts catering to functional needs rather than aesthetics.

This change between formality and informality allowed for a balance between public-facing appearances and private, functional spaces, and garden to the rear of the townhouse.



### Formal Frontage

The frontages are carefully arranged, with symmetrical arrangements of openings, cornices concealing the roofs, and additional surrounds to the windows and doors.



### Informal rear elevation

The rear elevation is informally arranged, the openings positioned to suit the uses of the rooms and staircases. The windows are undecorated, and the roof forms are revealed.