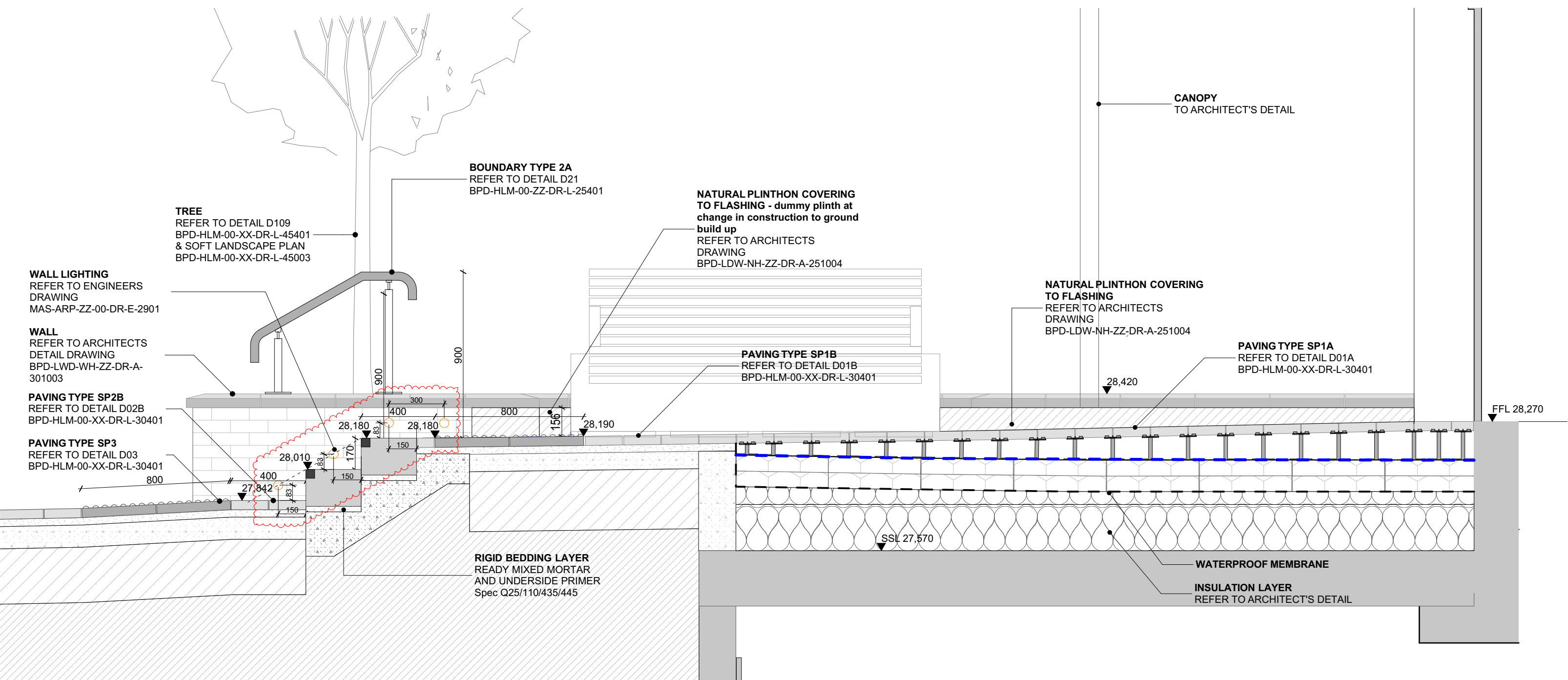
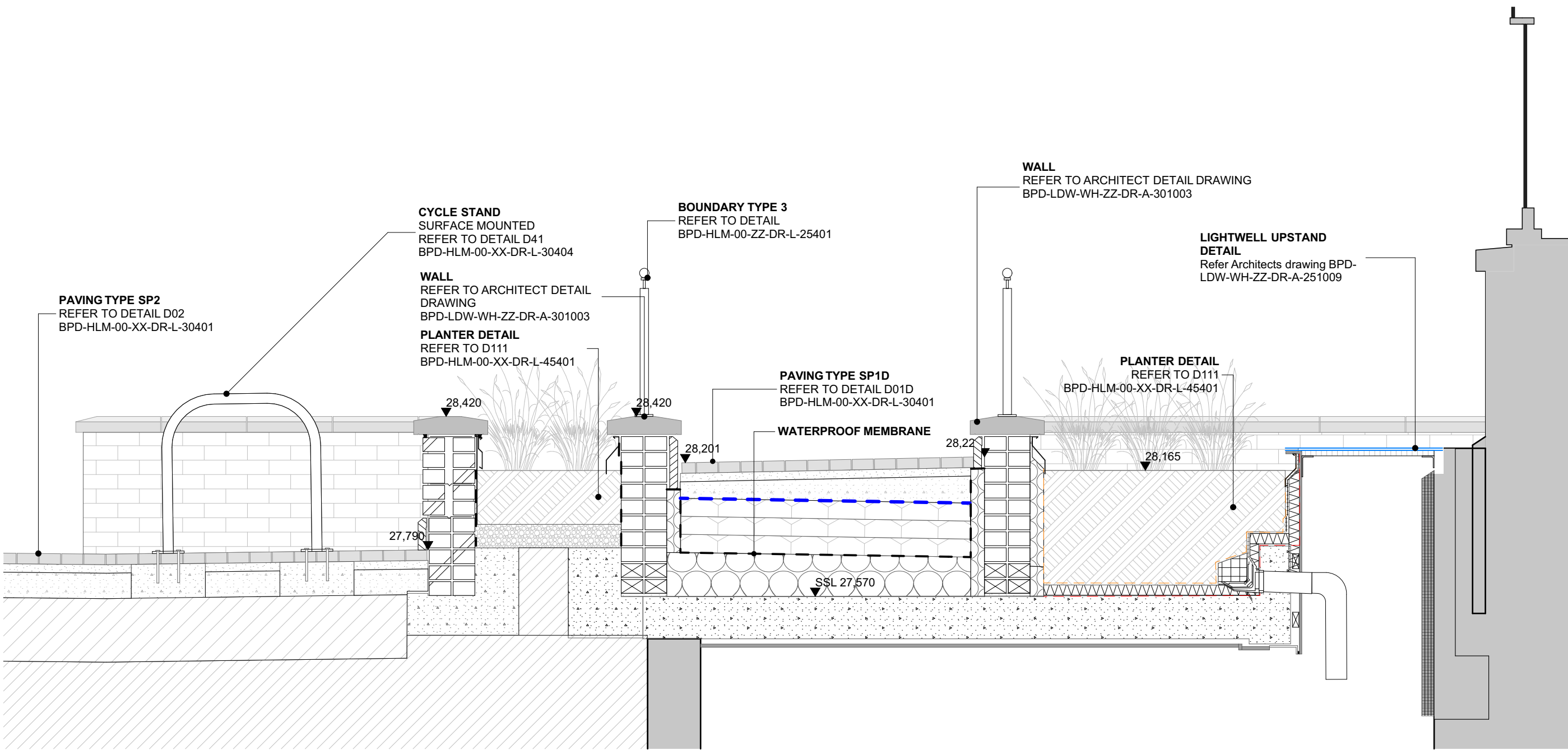


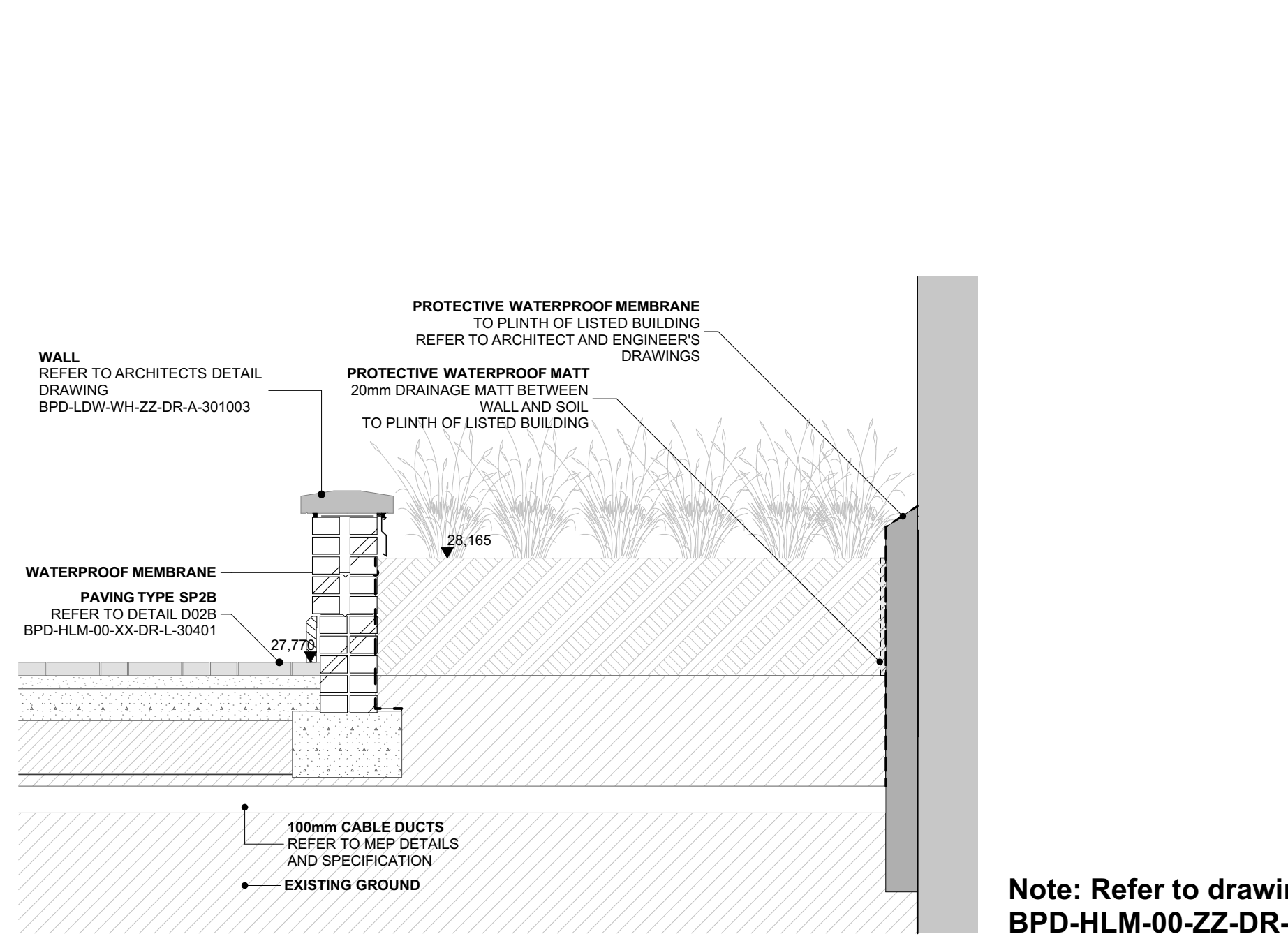
DETAIL SECTION LOCATION PLAN - L00 1:200



L(00)12 1:20

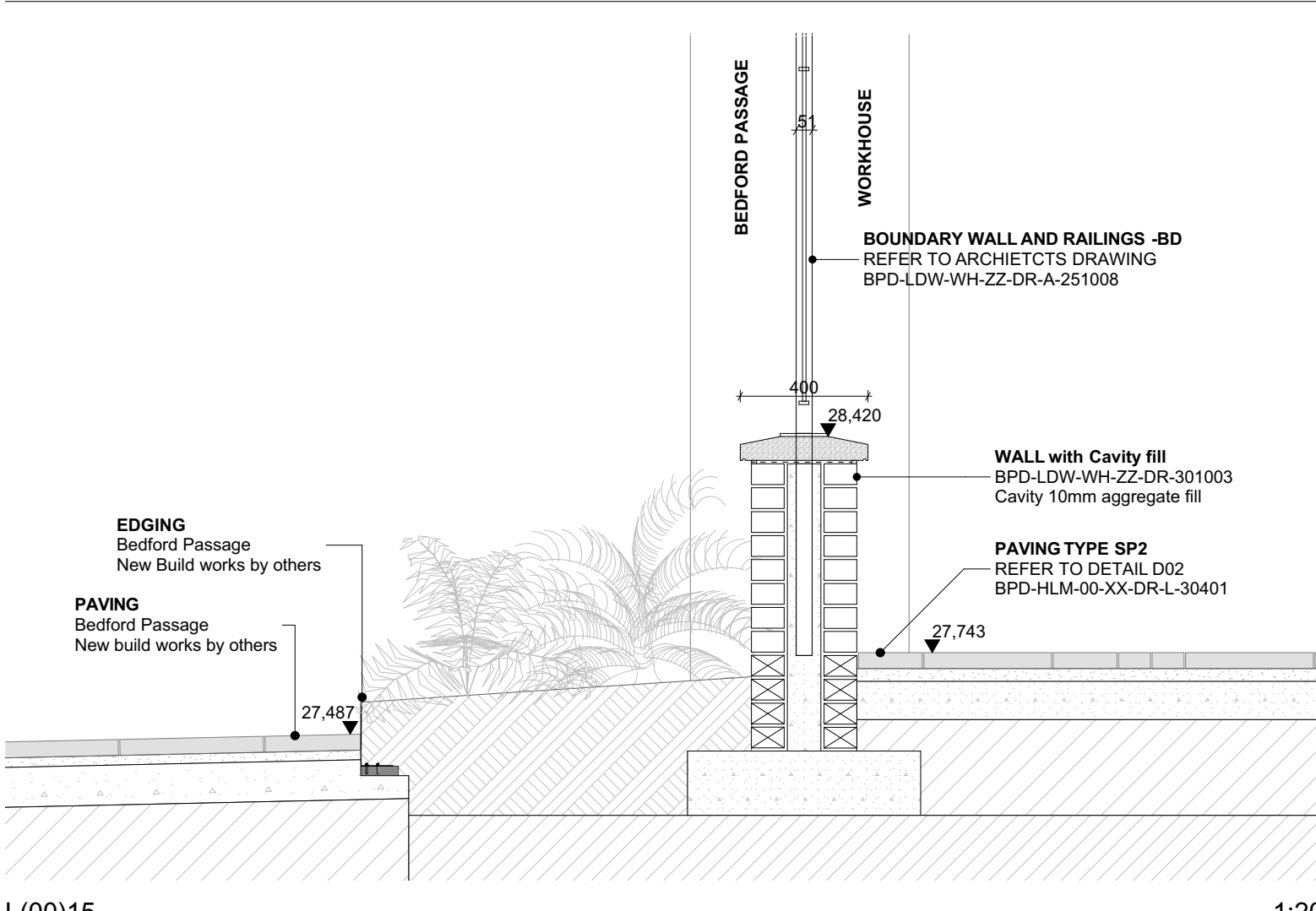


L(00)13 1:20

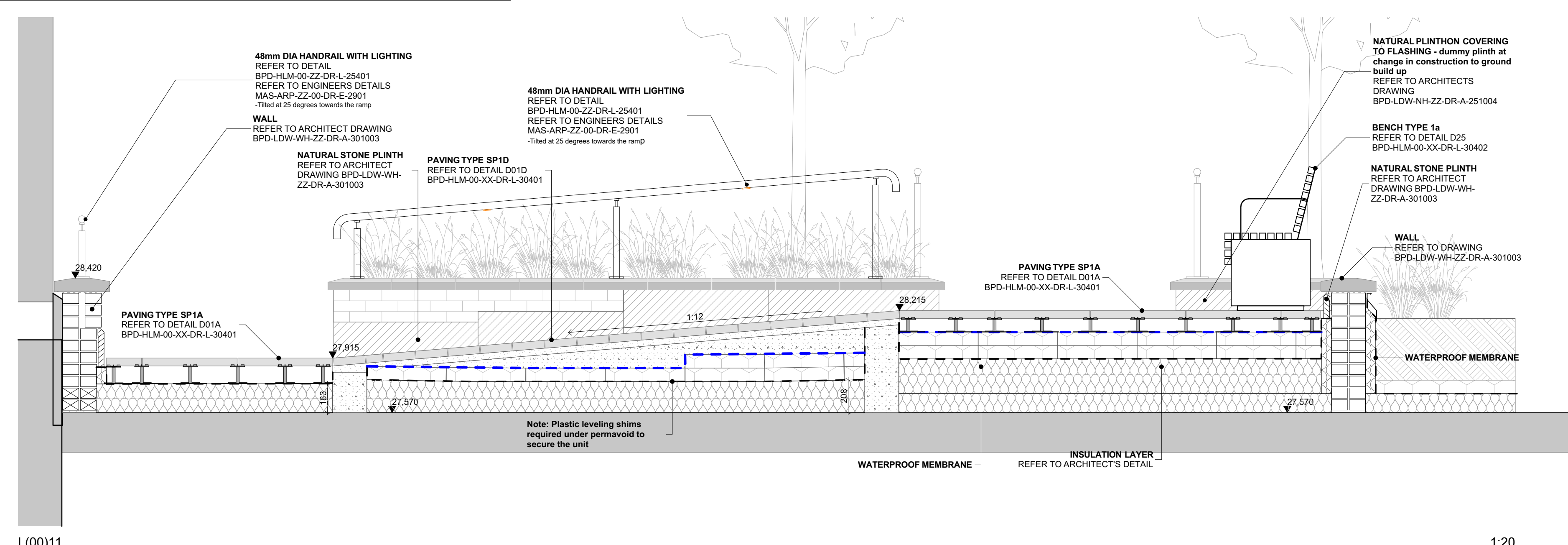


L(00)14 1:20

Note: Refer to drawing: BPD-HLM-00-ZZ-DR-L-25404 for coping stone details for Workhouse walls



L(00)15 1:20



L(00)11 1:20

Note: Plastic leveling shims required under permeavoid to secure the unit

Notes

Check all dimensions on site. Do not scale from this drawing. Report any discrepancies and omissions to HLM Architects. This Drawing is Copyright ©

C15	DIMENSIONS ADDED TO STAIR LIGHTING	06.07.23	LF	AO
C14	REVISED STAGE 5 ISSUE	19.12.22	AO	AO
C13	STAGE 5 ISSUE	21.11.22	AO	AO
C12	LIGHTING AND STEP UPDATES	16.11.22	AO	AO
C11	PLINTH LOCATIONS UPDATED	24.10.22	AO	AO
C10	REVISED STAGE 5 ISSUE	19.10.22	KA	AO
C09	REVISED STAGE 5 ISSUE	07.10.22	HV	AO
C08	NORTH HOUSE AND WORK HOUSE - STAGE 5 ISSUE	15.01.21	HV	AO
C07	REVISED STAGE 4 ISSUE	17.01.20	HV	AO
C06	ISSUED FOR COORDINATION	10/10/19	LF	AO
C05	ISSUED FOR COORDINATION	26/06/19	LF	AO
C04	ISSUE FOR TENDER	23/02/19	LF	PI
C03	ISSUE FOR TENDER	08/02/19	MC	AO
C02	ISSUE FOR TENDER	26/10/18	MC	PI
C01	FOR INFORMATION	05/10/18	MC	PI

Rev	Description	Date	By	Chk
Revisions				

Project

BEDFORD PASSAGE DEVELOPMENT

Client

MIDDLESEX ANNEXE LLP

Title

LANDSCAPE DETAIL SECTIONS - SHEET 06

Drawing No.	Revision
BPD-HLM-00-00-DR-L-00216	C15

Scale @ A1	Drawn
As Drawing	BH
Date	Checked
04/10/2018	HLM