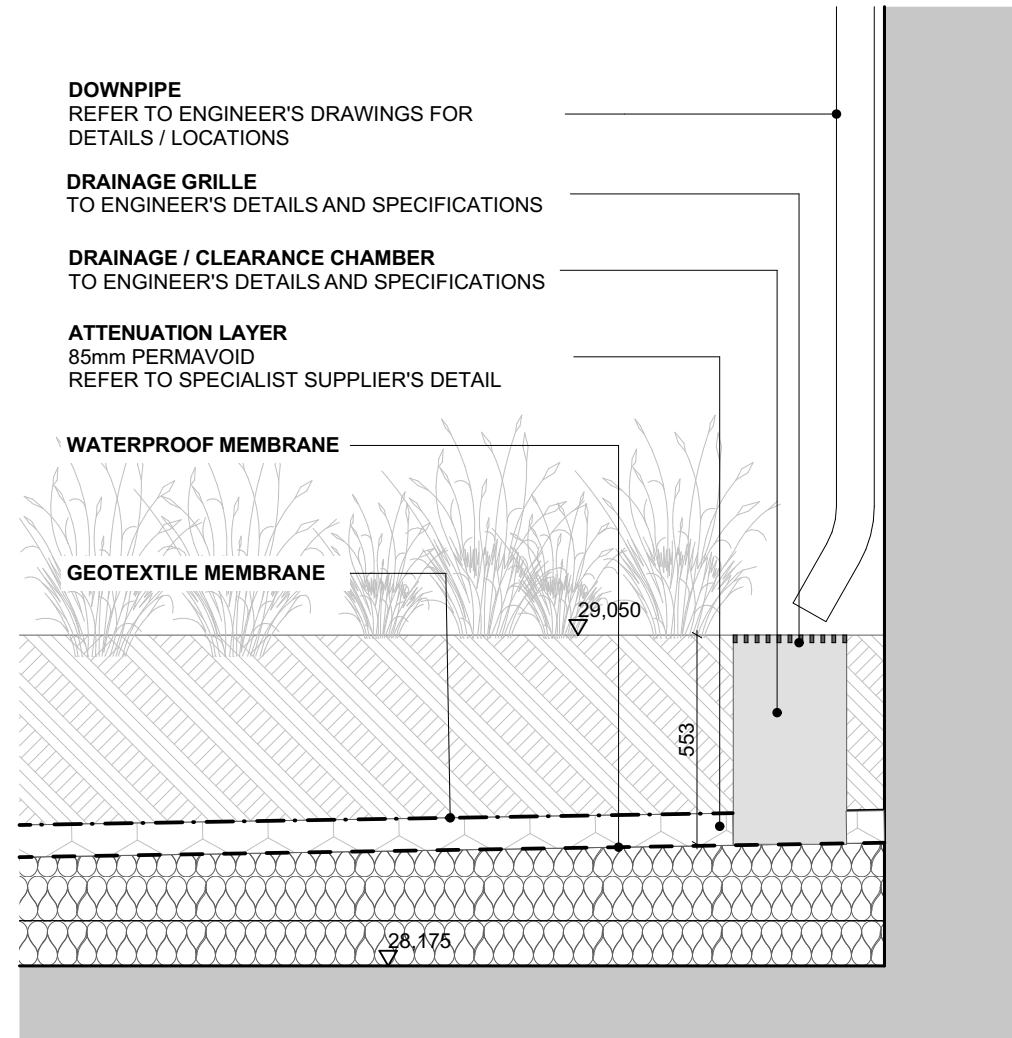
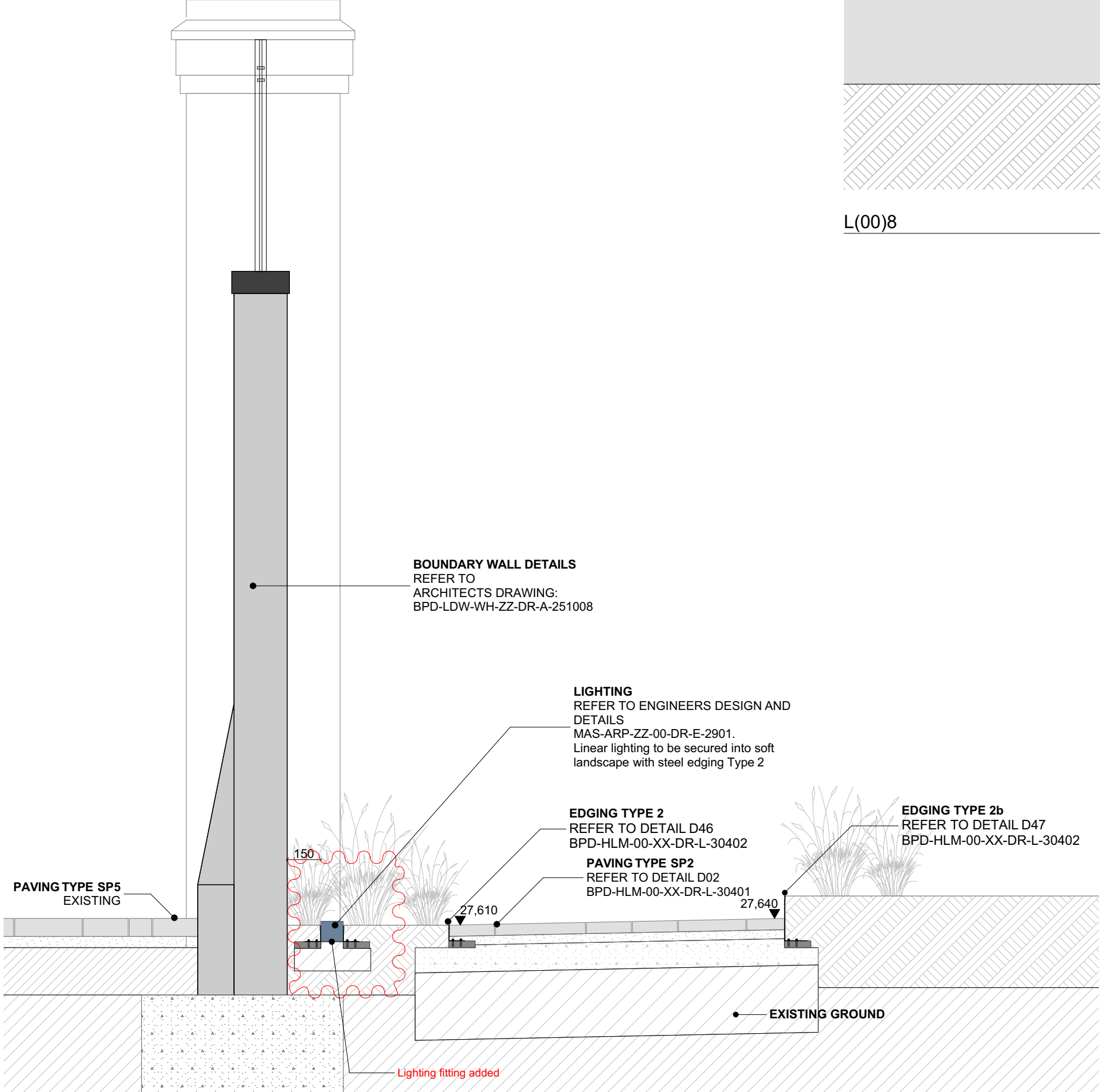


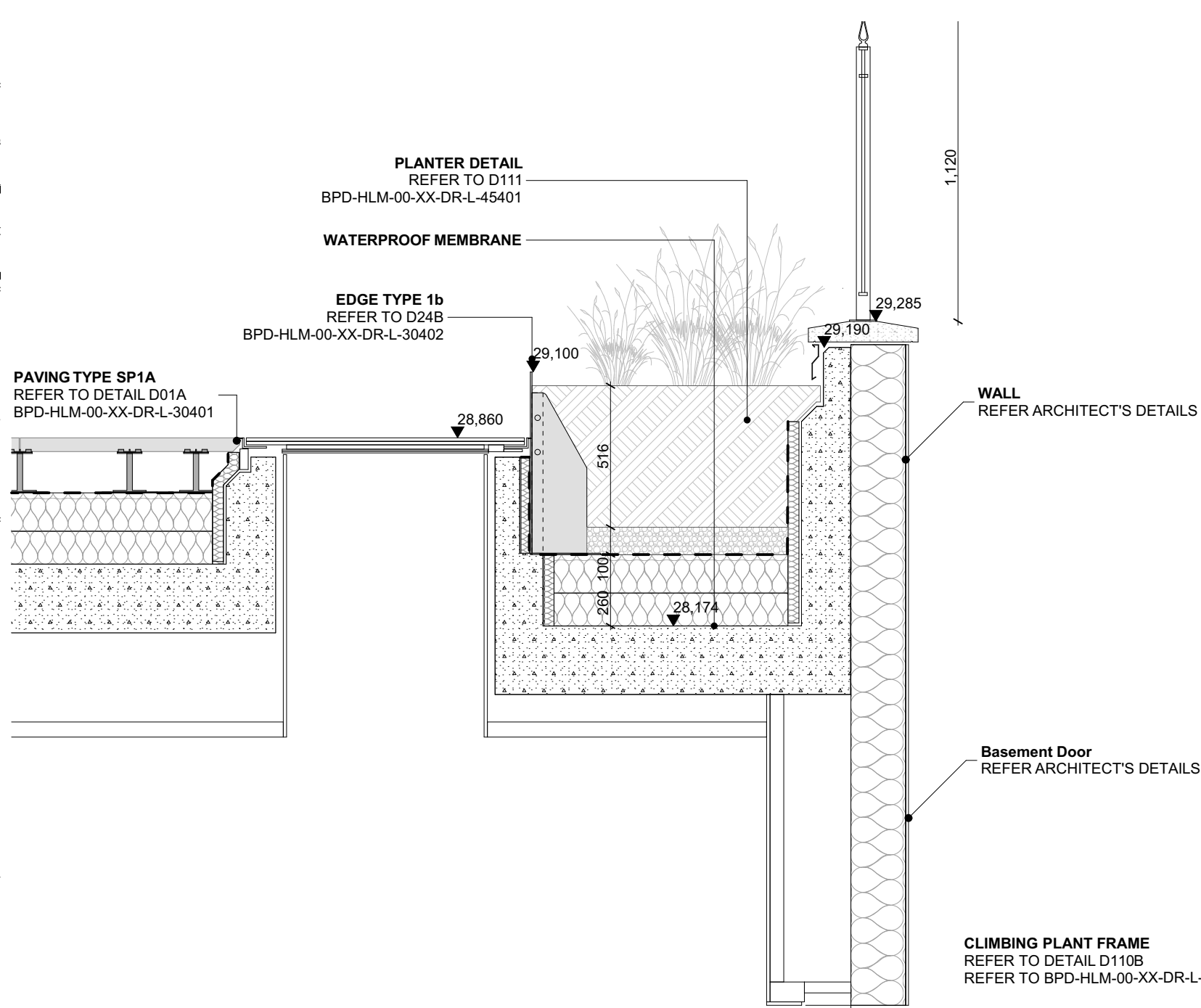
DETAIL SECTION LOCATION PLAN - L00 1:200



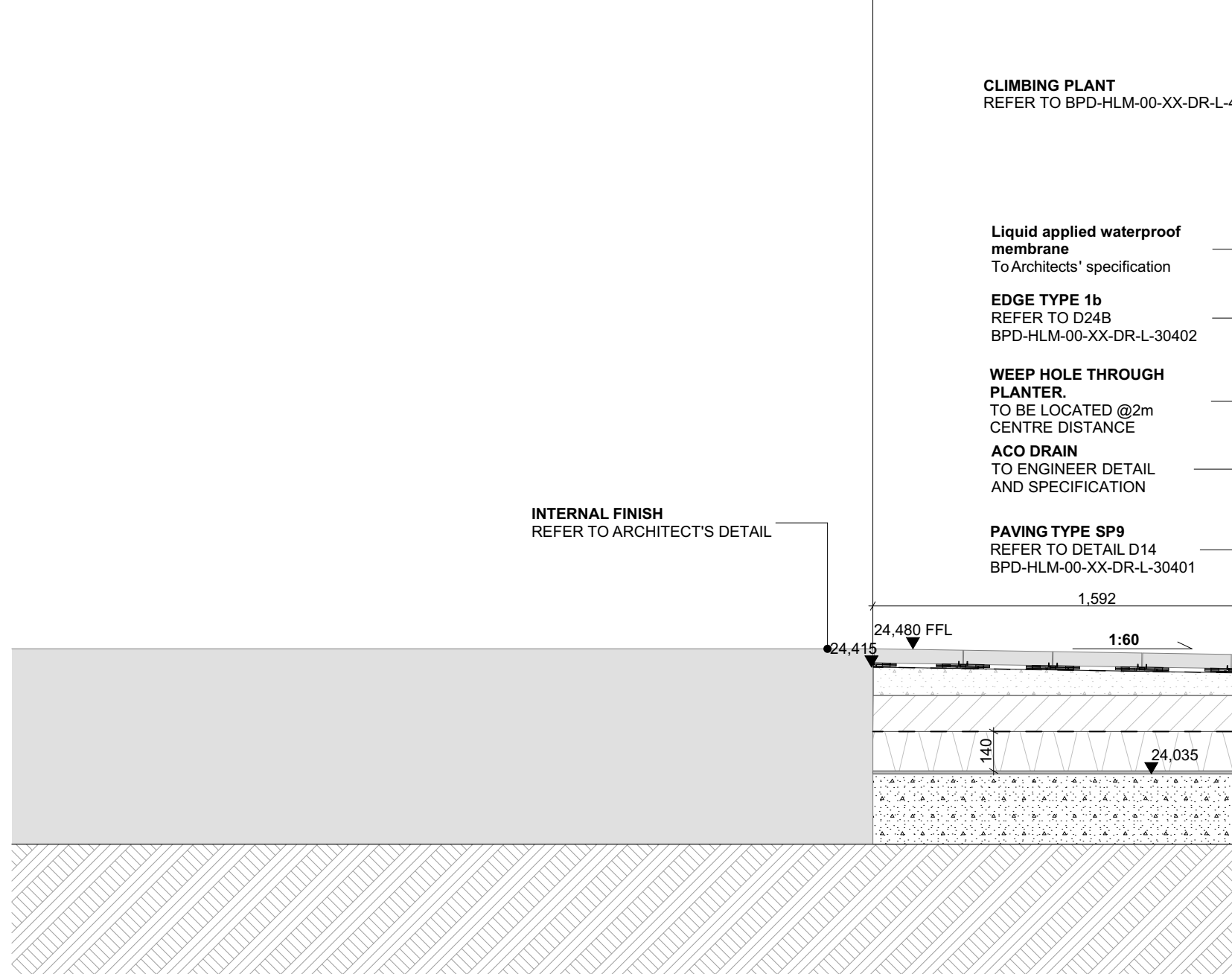
L(00)9 1:20



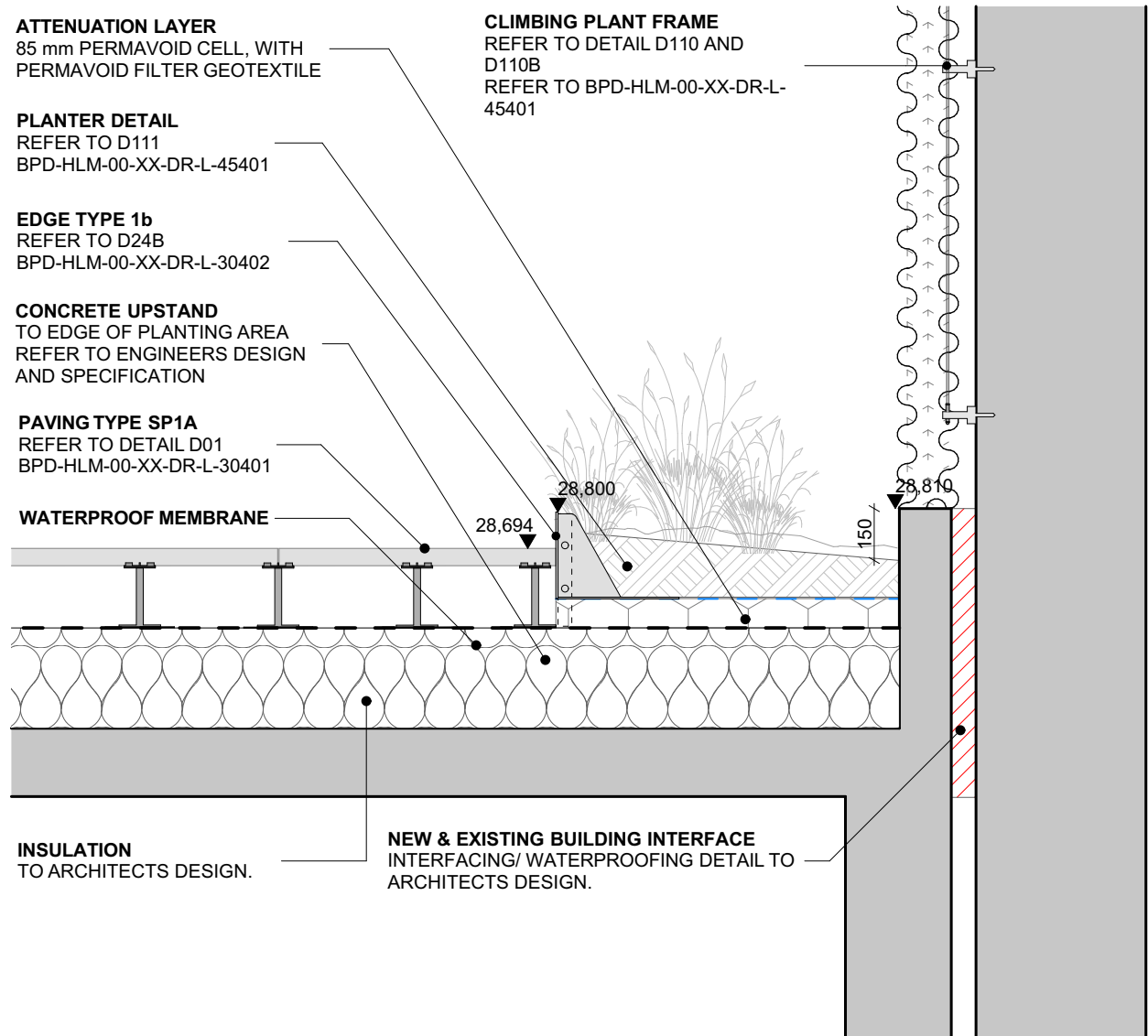
L(00)10 1:20



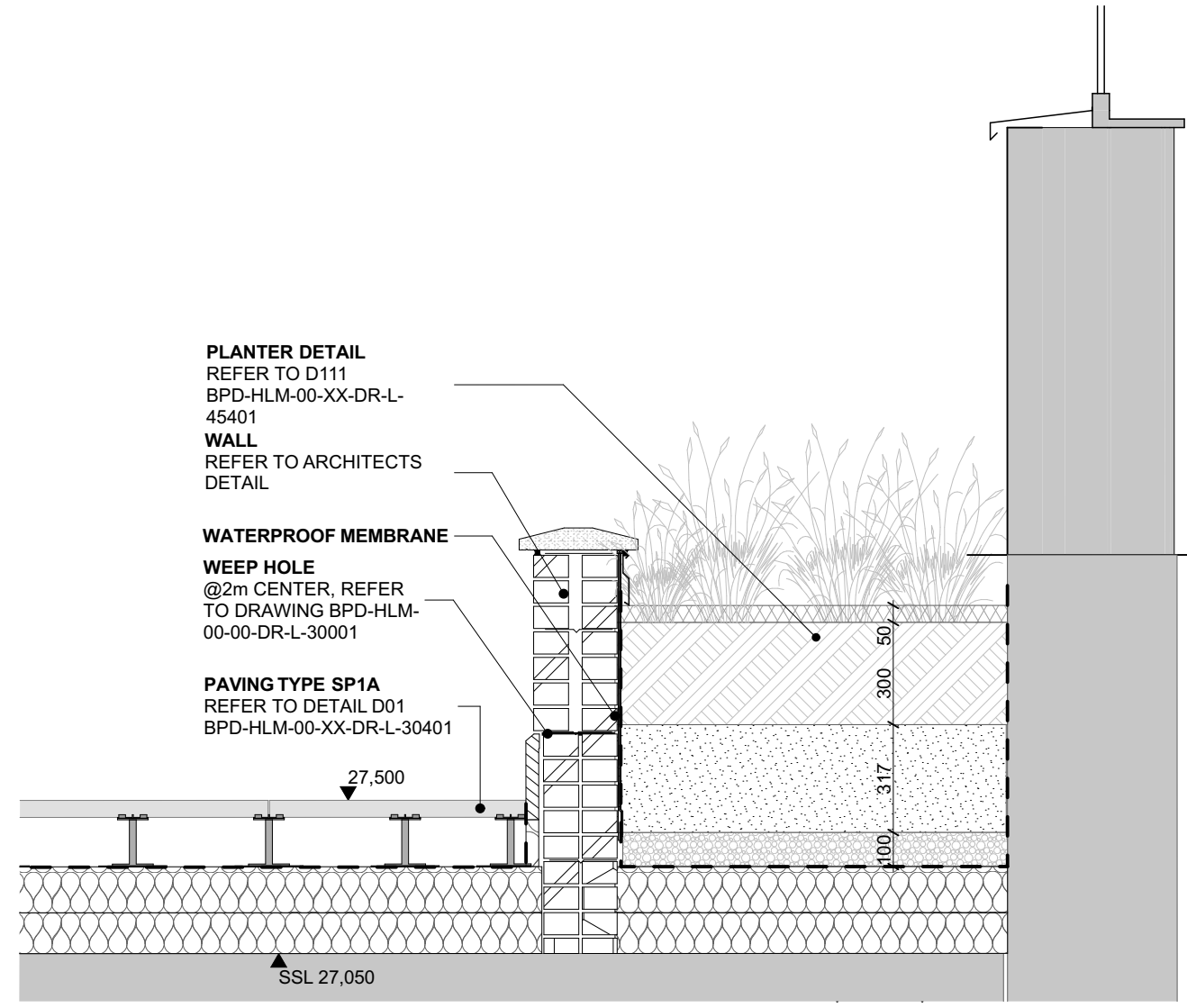
L(00)8 1:20



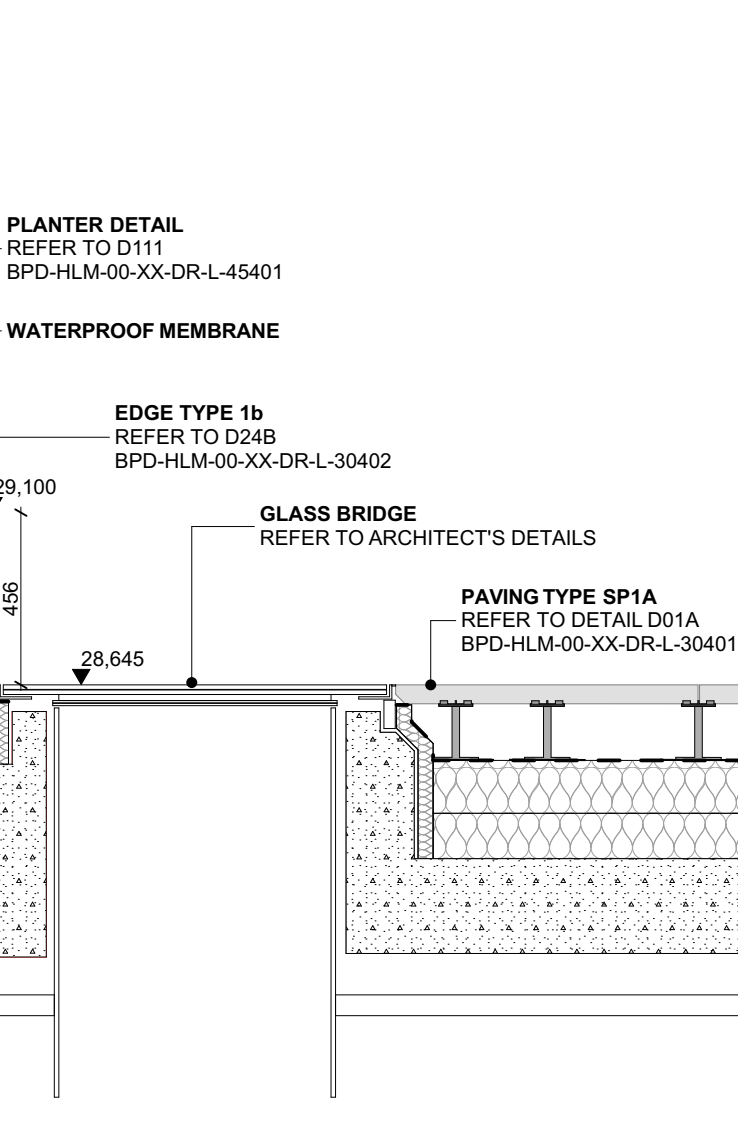
DS08 1:20



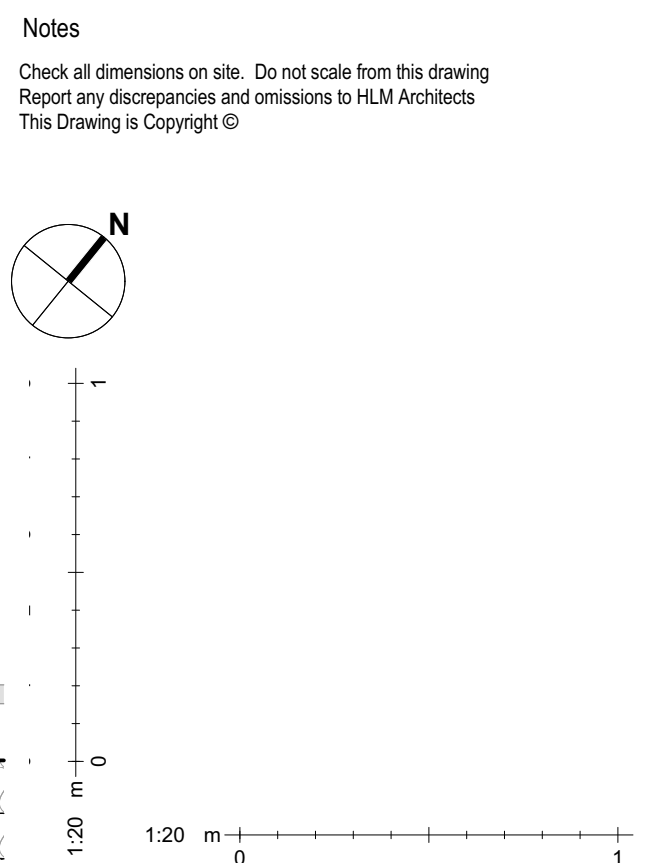
L(00)5 1:20



L(00)6 1:20



DS06 1:20



C14	LIGHTING POSITION REVISED/ COORDINATED WITH ARUP	14.07.23	HV	AO
C13	STAGE 5 ISSUE	21.11.22	AO	AO
C12	REVISED STAGE 5 ISSUE	19.10.22	KA	AO
C11	REVISED STAGE 5 ISSUE	07.10.22	KA	AO
C10	NORTH HOUSE AND WORK HOUSE - STAGE 5 ISSUE	15.01.21	HV	AO
C09	REVISED STAGE 4 ISSUE	23.06.20	HV	AO
C08	REVISED STAGE 4 ISSUE	12.02.20	AO	HLM
C07	REVISED STAGE 4 ISSUE	17.01.20	HV	AO
C06	ISSUED FOR COORDINATION	10/10/19	LF	AO
C05	ISSUED FOR COORDINATION	26/06/19	LF	AO
C04	ISSUE FOR TENDER	23/02/19	LF	PI
C03	ISSUE FOR TENDER	08/02/19	MC	AO
C02	ISSUE FOR TENDER	26/10/18	MC	PI
C01	FOR INFORMATION	05/10/18	MC	PI
Rev	Description	Date	By	Chk

Revisions
Project

BEDFORD PASSAGE DEVELOPMENT

Client

MIDDLESEX ANNEXE LLP

Title

LANDSCAPE DETAIL SECTIONS - SHEET 05

Drawing No.	Revision
BPD-HLM-00-00-DR-L-00215	C14

Scale @ A1	Drawn
As Drawing	BH

Date	Checked
04/10/2018	HLM



© HLMArchitects
2nd Floor
The Ruskin Building
Tudor Square
Sheffield S1 2LA

www.hlmarchitects.com
T. +44 (0) 114 263 9600
F. +44 (0) 114 263 9650
sheffield@hlmarchitects.com