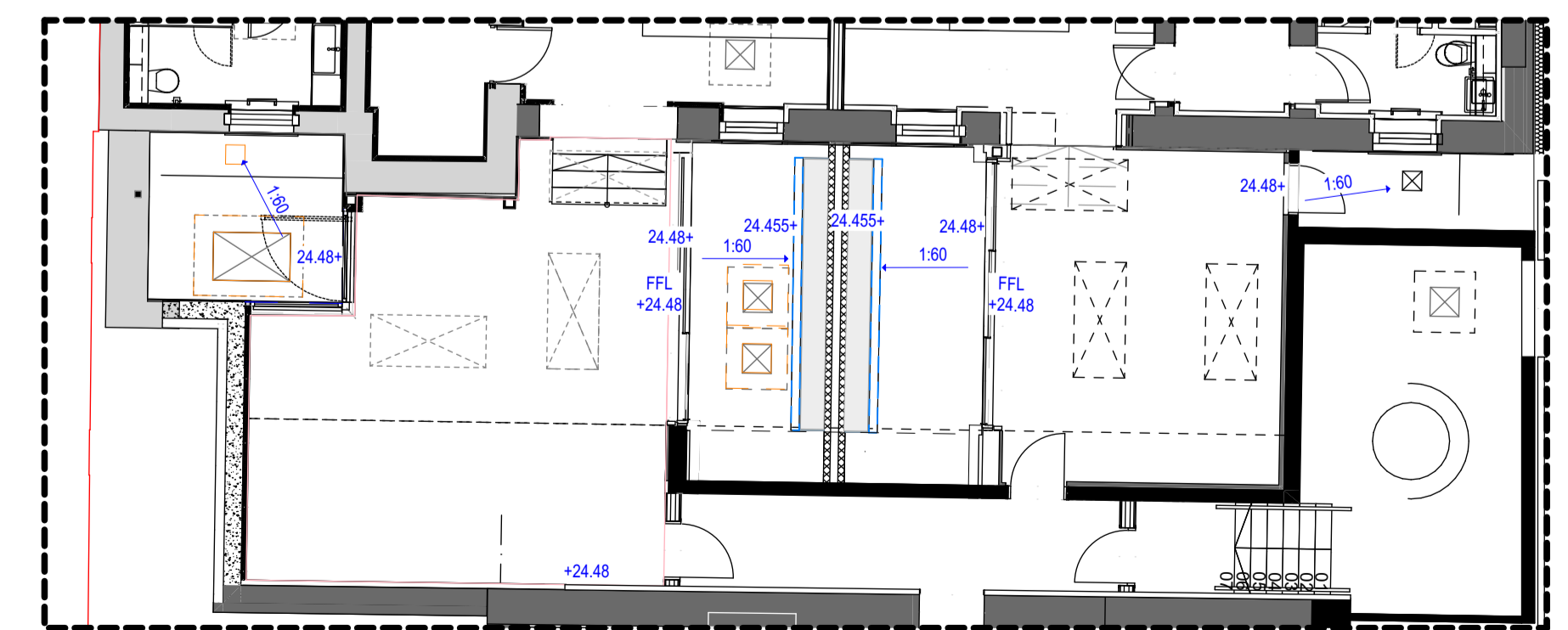


CLEVELAND STREET

B1: BASEMENT LEVEL

HATCHING ADDED TO EXCLUDE NEW BUILD SCOPE FROM WORKS PACKAGE

NEW BUILD WORKS BY OTHERS

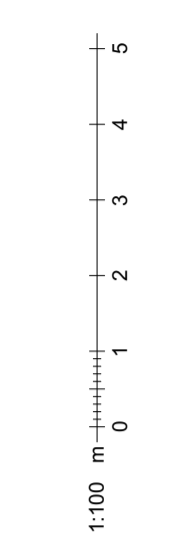
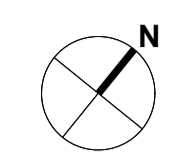


B1 BASEMENT LEVEL 1:100

- Landscape Levels Key**
- +26.76 Existing Levels
  - +26.76 Proposed Level for Section 278 Work
  - +26.761OK Proposed Top of Kerb Level for Section 278 Work
  - +26.88 Proposed Levels
  - +26.88 low Proposed Top of Wall Level
  - +26.88 top Proposed Top of Planter Level
  - +26.88 Proposed Levels within Planter
  - 1:21 Proposed Falls
  - 1:21 Proposed Falls for Section 278 Work
  - 1:12 Proposed Ramp Slopes
  - Level Break
  - EJ Expansion Joints
  - \*\*\*\*\* Refer to Hard Landscape Drawing BPD-HLM-00-00-DR-L-30001 and BPD-HLM-00-00-DR-L-30002 for Details
  - Soft Landscape
  - Hard Landscape
  - Approximate location of manhole / downpipe. Refer to Engineer's drawings for details.
  - Approximate location of attenuation tank. Refer to Engineer's drawings for details.
  - Surface Drainage Channel. Refer to AECOM Civils Drainage Plans

- LIGHTING PLAN KEY - HERITAGE**  
Refer to Arup MEP drawings MAS-ARP-ZZ-00-DR-E-2901 and lighting schedule for full details and specification
- Type EW1 Linear wall wash lighting
  - Type EW2a Tree uplighter, to be installed outside of tree rootball
  - Type EW2b Vertical wall recessed to steps
  - Type EW2c Ground recessed lighting
  - Type EB2 Recessed wall luminaire. To be set at 365mm or 5 brick courses from ground
  - Type EW3
  - Type HR1 Handrail Lighting

Notes  
Check all dimensions on site. Do not scale from this drawing. Report any discrepancies and omissions to HLM Architects. This Drawing is Copyright ©



Rev	Description	Date	By	Chk
C17	METAL WORK DIMENSION ADDED	01/08/23	HV	AD
C16	LIGHTING POSITION REVISED/ COORDINATED WITH ARUP	14/07/23	HV	AD
C15	REVISED STAGE 5 ISSUE	19/12/22	AO	AD
C14	REVISED STAGE 5 ISSUE	19/10/22	AO	AD
C13	NORTH HOUSE AND WORK HOUSE - STAGE 5 ISSUE	15/01/23	HV	AD
C12	STAGE 4 (PCSA STAGE 1 DESIGN REVIEW)	17/07/20	HV	AD
C11	REVISED STAGE 4 ISSUE	23/05/20	HV	AD
C10	REVISED STAGE 4 ISSUE	12/02/20	AO	HLM
C09	REVISED STAGE 4 ISSUE	17/01/20	HV	AD
C08	ISSUED FOR COORDINATION	10/09/19	LF	AD
C07	ISSUED FOR COORDINATION	26/09/19	LF	AD
C06	UPDATE AS CLOUDED	13/06/19	LF	MC
C05	ISSUE FOR TENDER	22/02/19	LF	PI
C04	ISSUE FOR TENDER	09/02/19	MC	AD
C03	ISSUE FOR TENDER	22/11/18	LF	PI
C02	ISSUE FOR TENDER	26/10/18	MC	PI
C01	FOR INFORMATION	02/10/18	MC	PI

Revisions

Project  
**BEDFORD PASSAGE DEVELOPMENT**

Client  
**MIDDLESEX ANNEXE LLP**

Title  
**LANDSCAPE LEVELS AND SETTING OUT - SHEET 01**

Drawing No. **BPD-HLM-00-00-DR-L-00011** Revision **C17**

Scale @ A1 **1:100** Drawn **BH**  
Date **04/10/2018** Checked **HLM**

**HLM Architects**  
© HLMArchitects  
2nd Floor  
The Ruskin Building  
Tudor Square  
Sheffield S1 2LA  
www.hlmarchitects.com  
T. +44 (0) 114 263 9600  
F. +44 (0) 114 263 9650  
sheffield@hlmarchitects.com

