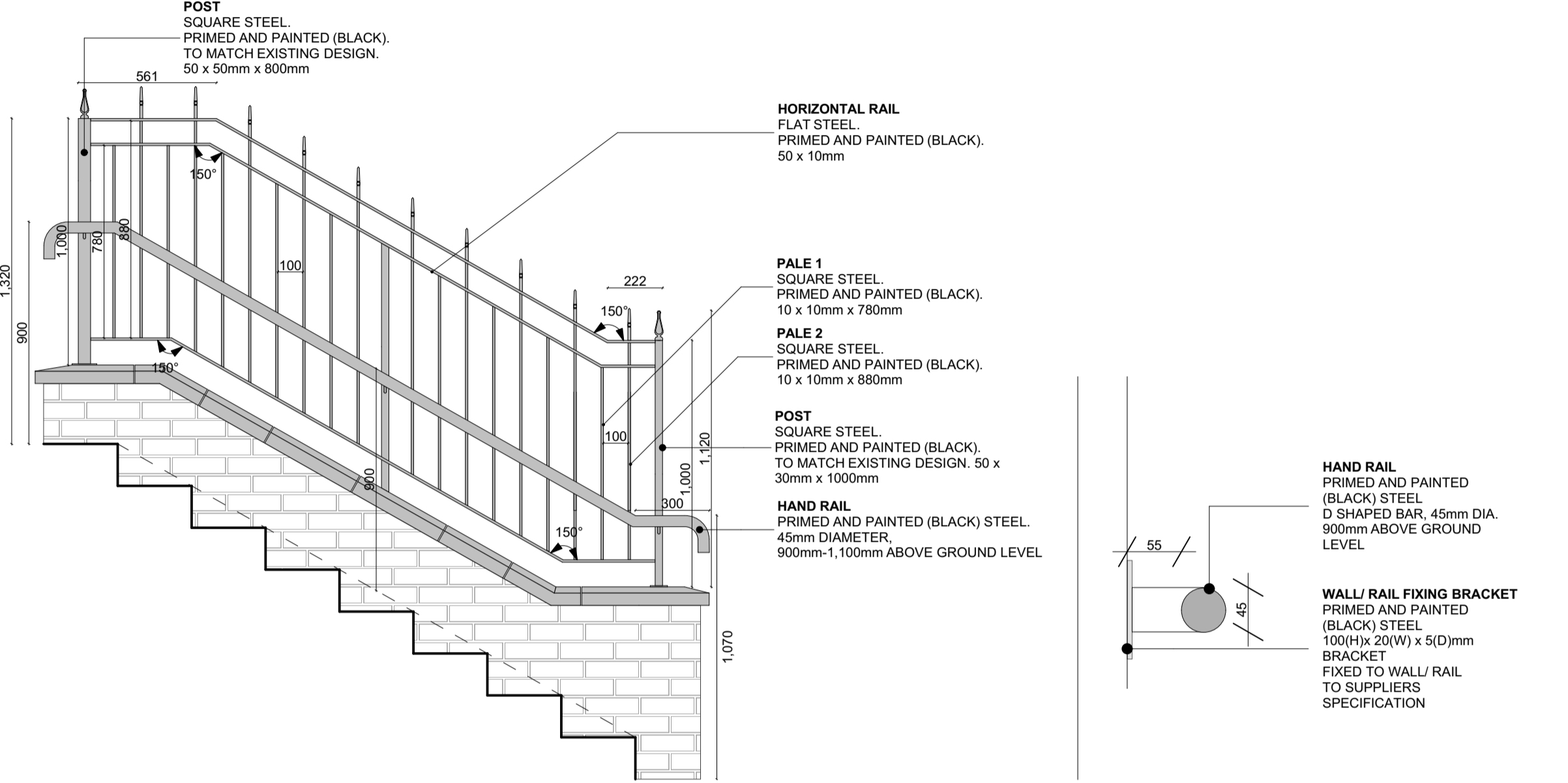
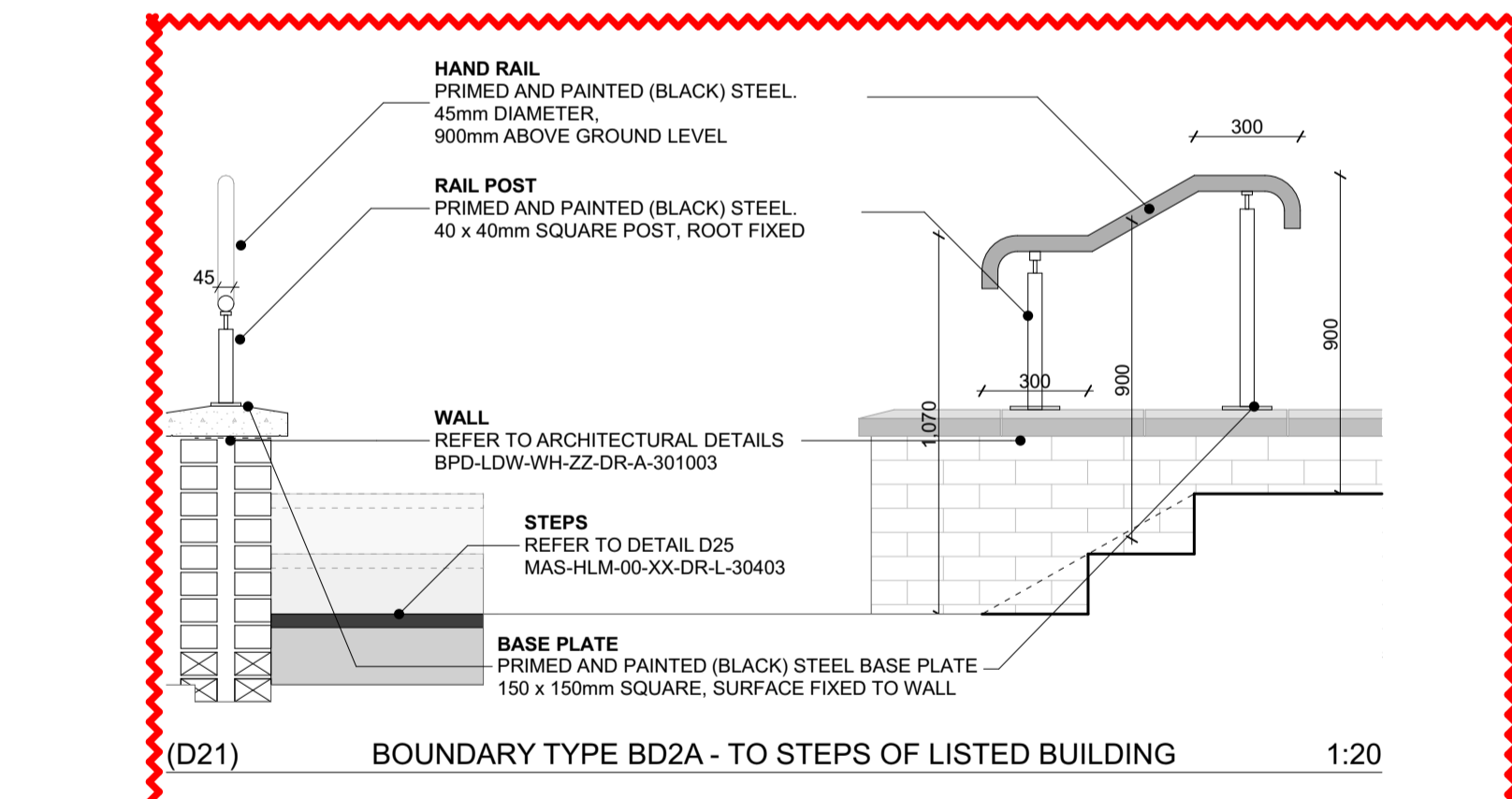


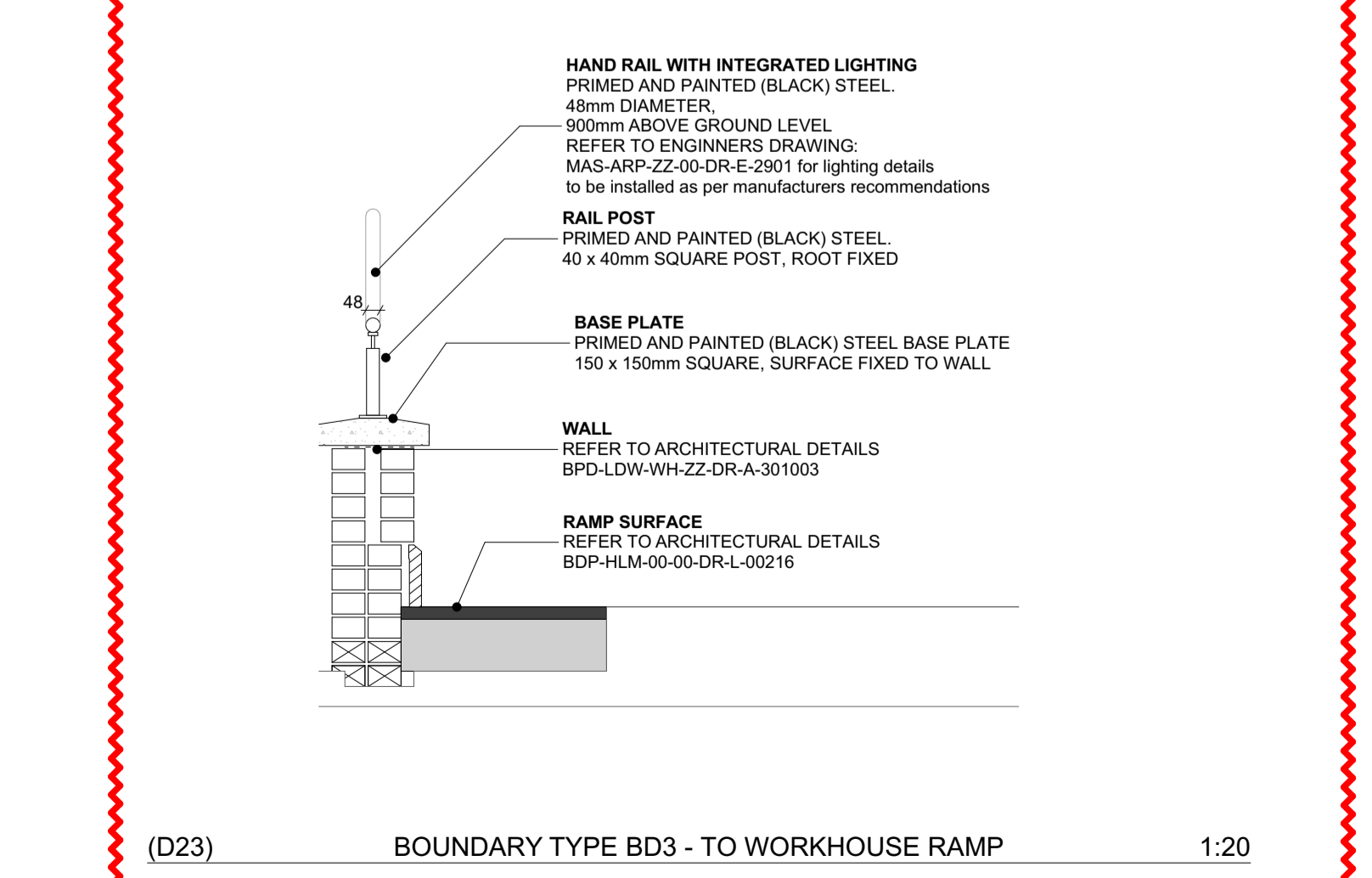
(D19) BOUNDARY TYPE BD1a 1:20



(D20) BOUNDARY TYPE BD2 - TO STEPS OF NORTH HOUSE 1:20 (D20B) RAILING FIXING DETAIL 1:5



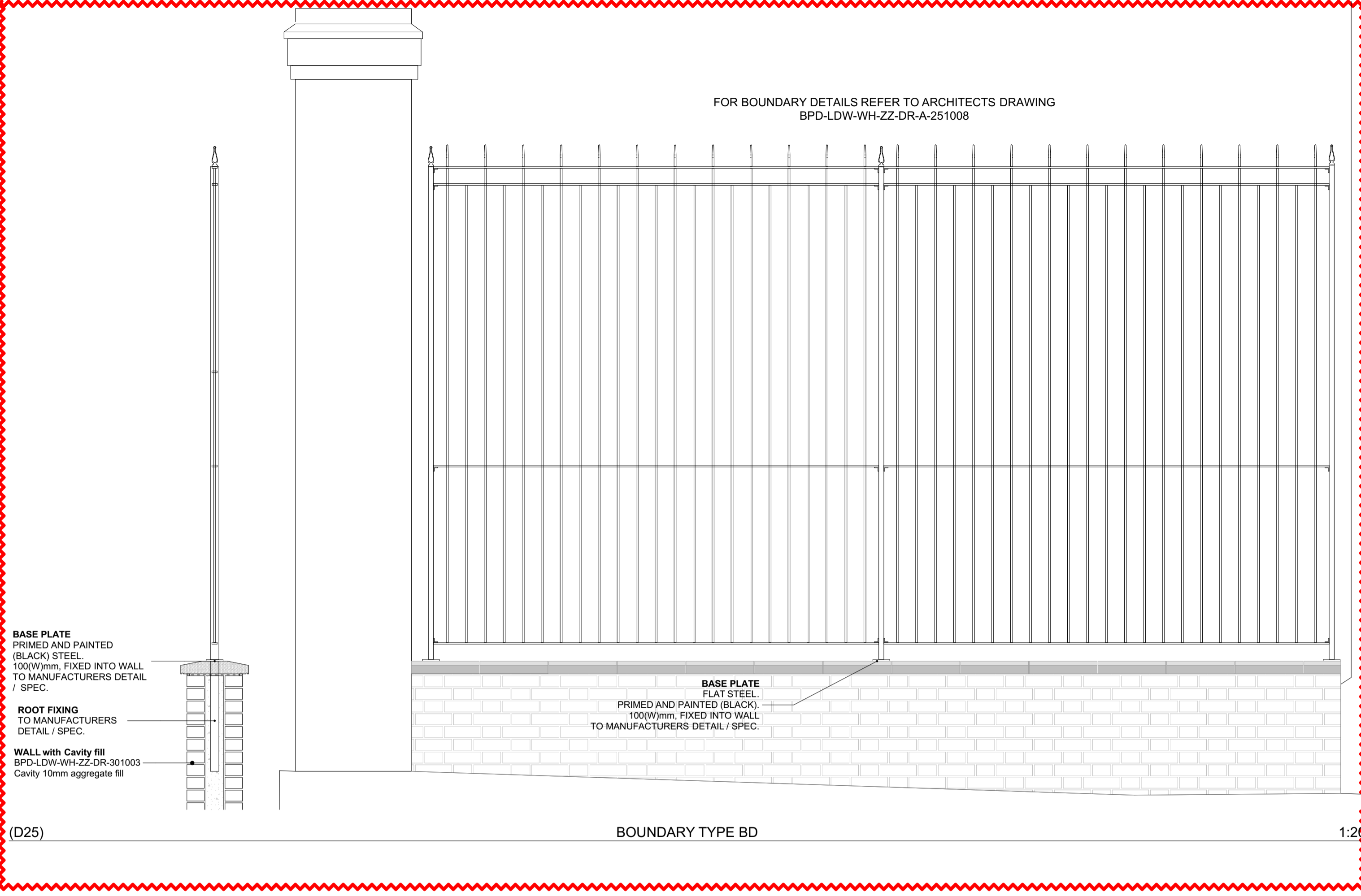
(D21) BOUNDARY TYPE BD2A - TO STEPS OF LISTED BUILDING 1:20



(D23) BOUNDARY TYPE BD3 - TO WORKHOUSE RAMP 1:20

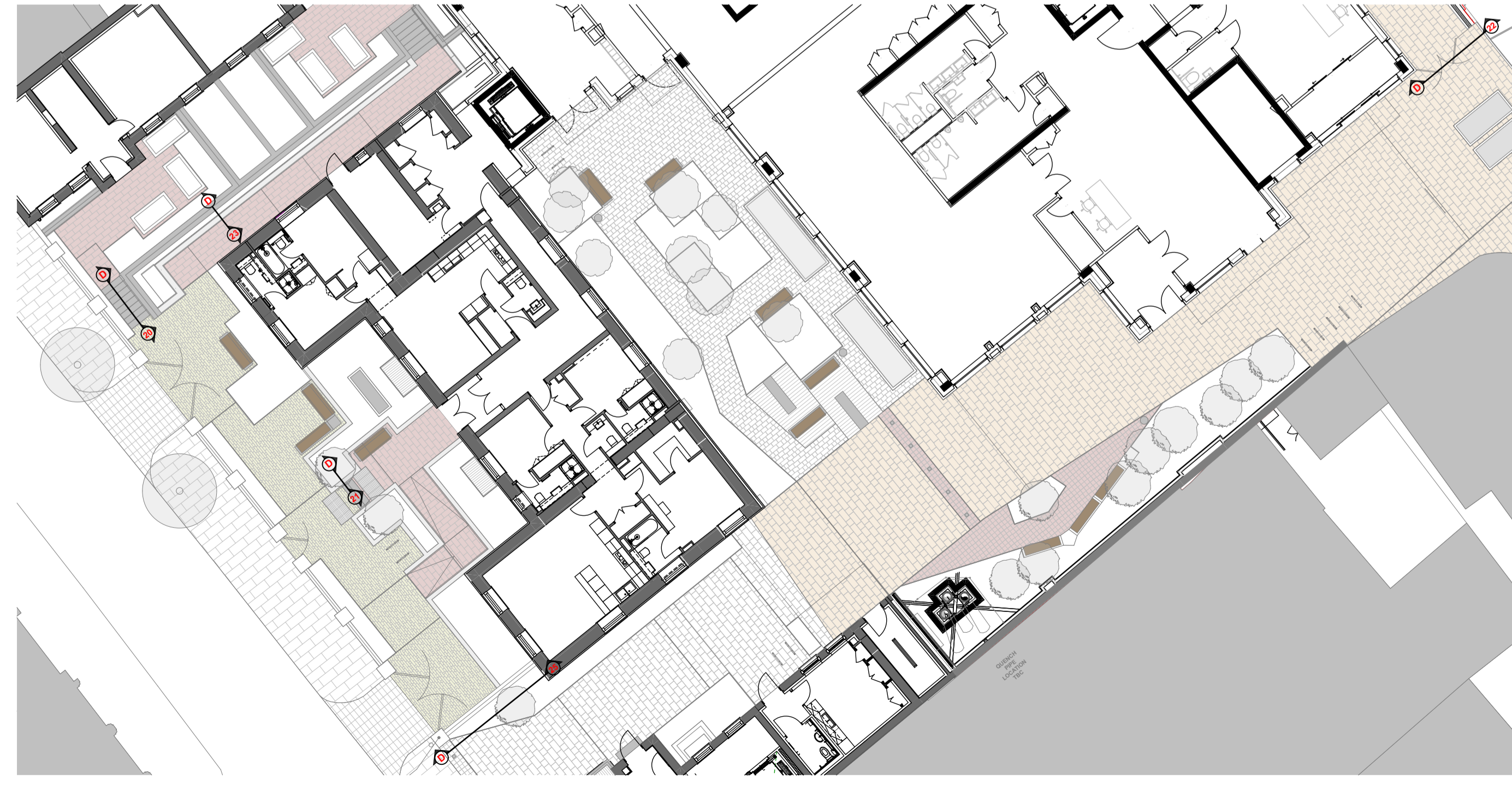
Rev C10
HANDRAIL
MOUNTED ON
WALL
REV C12
PLINTH
COVERING
OMITTED FROM
DETAIL

RAMP HANDRAIL
DETAIL ADDED



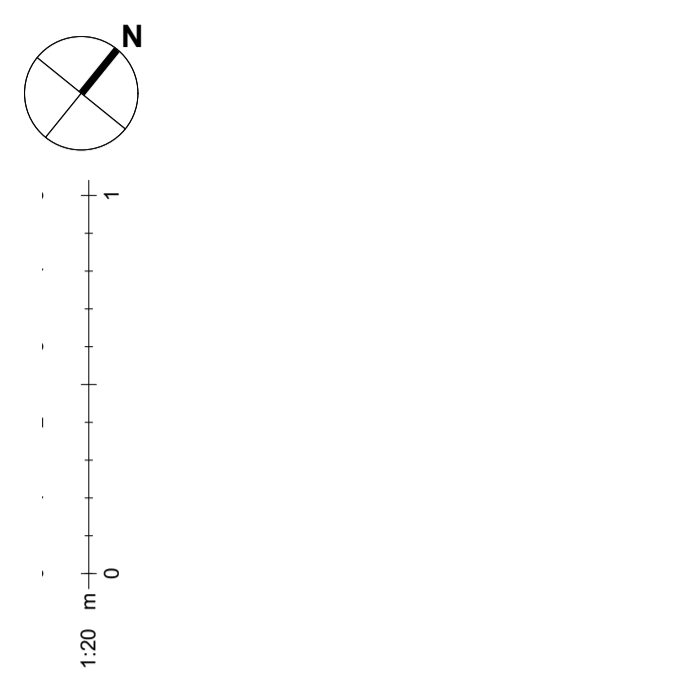
(D25) BOUNDARY TYPE BD 1:20

NOTES UPDATED - REFERENCE ARCHITECTS DRAWINGS FOR DETAILS



Ground Floor Typical Detail Location Plan 1:20

Notes
Check all dimensions on site. Do not scale from this drawing.
Report any discrepancies and omissions to HLM Architects.
This Drawing is Copyright ©



Rev	Description	Date	By	Chk
C12	REVISED STAGE 5 ISSUE	21.12.22	AO	AO
C11	REVISED STAGE 5 ISSUE	19.12.22	AO	AO
C10	STAGE 5 ISSUE	21.11.22	AO	AO
C09	REVISED STAGE 5 ISSUE	07.10.22	HV	AO
C08	NORTH HOUSE AND WORK HOUSE - STAGE 5 ISSUE	15.01.21	HV	AO
C07	STAGE 4 (PCSA STAGE 1 DESIGN REVIEW)	17.07.20	HV	AO
C06	REVISED STAGE 4 ISSUE	17.01.20	HV	AO
C05	ISSUE FOR COORDINATION	26/09/19	LF	PI
C04	ISSUE FOR TENDER	22/02/19	LF	PI
C03	ISSUE FOR TENDER	08/02/19	MC	AO
C02	ISSUE FOR TENDER	26/10/18	MC	PI
C01	FOR INFORMATION	09/10/18	MC	PI

Revisions

Project
BEDFORD PASSAGE DEVELOPMENT

Client
MIDDLESEX ANNEXE LLP

Title
LANDSCAPE BOUNDARY DETAILS

Drawing No. **BPD-HLM-00-ZZ-DR-L-25401** Revision **C12**

Scale @ A1 1:20 Drawn BH Date 04/10/2018 Checked HLM

HLM Architects
© HLM Architects 2nd Floor The Ruskin Building Tudor Square Sheffield S1 2LA
www.hlmarchitects.com T. +44 (0) 114 263 9600 F. +44 (0) 114 263 9650 sheffield@hlmarchitects.com