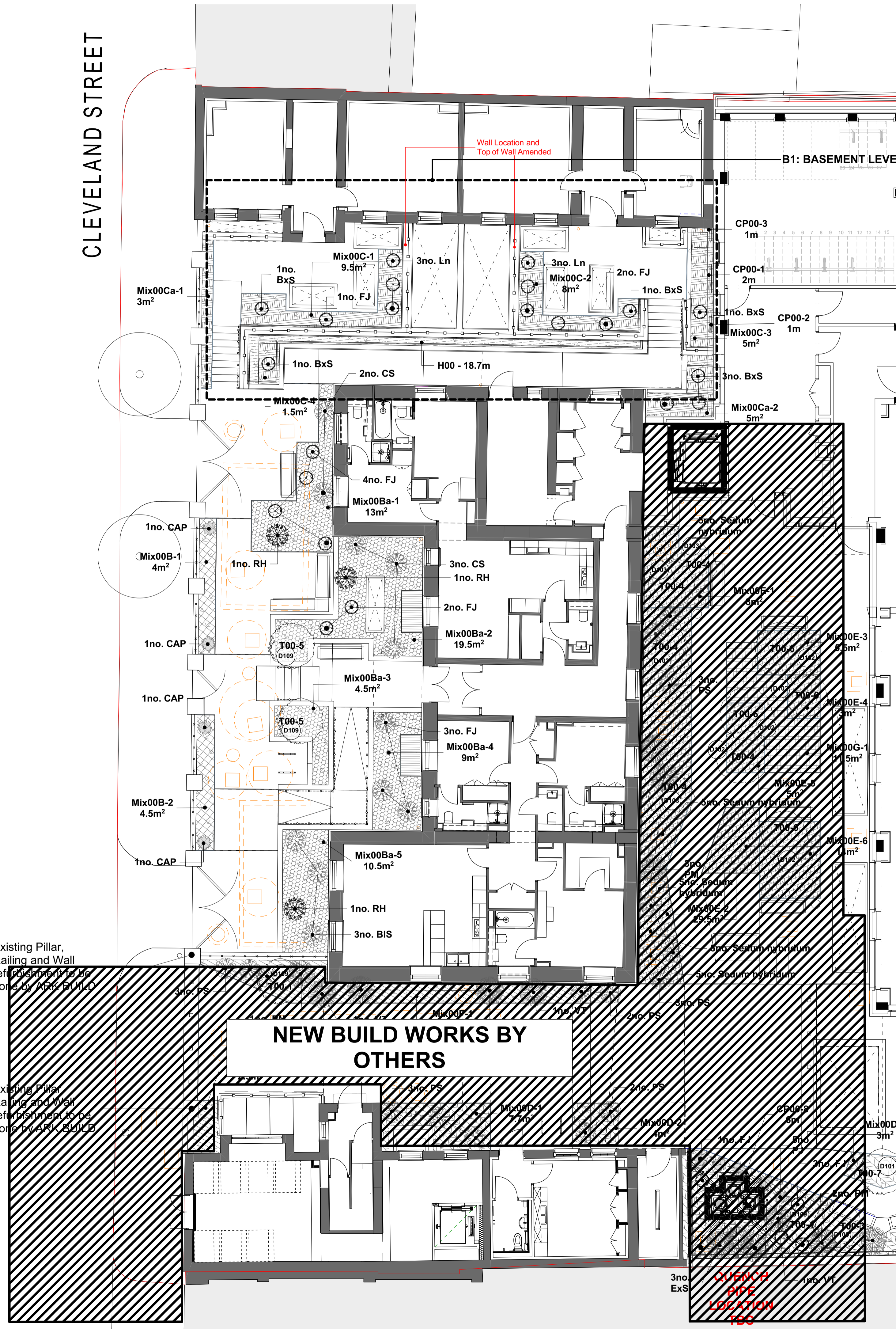


CLEVELAND STREET



Existing Pillar, Railing and Wall refurbishment to be done by ARK BUILD

Existing Pillar, Railing and Wall refurbishment to be done by ARK BUILD

NEW BUILD WORKS BY OTHERS

QUIK-P PIPE LOCATION

Soft Landscape GA Key

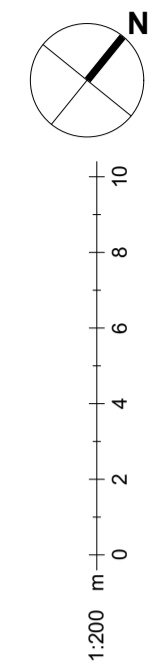
LEVEL 00

- Beds of single species plants - Individual shrubs
Refer to Planting schedule for details
- Mix 00B - Workouse Yard Shade Mix
Refer to Planting schedule for details
- Mix 00C - North House Mix
Refer to Planting schedule for details
- H00 - Hedge Type 1
Refer to Planting schedule for details
- CP00 - Green Wall/ Climbing Plants
Refer to Planting schedule for details
- T00-5 - Gingko biloba
Refer to planting schedule for details
- Tree Pit Detail Reference
Refer to BPD-HLM-00-XX-DR-L-45401
- Ornamental Plants
Refer to Planting schedule for details

NOTE:
All native plant material must be sourced from Flora Locale Code of Practice suppliers

Planting Schedule Reference:
BPD-HLM-XX-XX-SH-L-45000

Notes
Check all dimensions on site. Do not scale from this drawing
Report any discrepancies and omissions to HLM Architects
This Drawing is Copyright ©



Key updated and references for planting mixes not in scope omitted

Hatched area for new build works added

Rev	Description	Date	By	CHK
C08	REVISED STAGE 5 ISSUE	18/12/22	AD	AD
C07	NORTH HOUSE AND WORK HOUSE - STAGE 5 ISSUE	15/01/21	HV	AD
C06	REVISED STAGE 4 ISSUE	23/06/20	HV	AD
C05	REVISED STAGE 4 ISSUE	17/01/20	HV	AD
C04	ISSUE FOR TENDER	22/02/19	LF	PI
C03	ISSUE FOR TENDER	08/02/19	MC	AD
C02	ISSUE FOR TENDER	26/10/18	MC	PI
C01	FOR INFORMATION	02/10/18	MC	PI

Revisions

Project
BEDFORD PASSAGE DEVELOPMENT

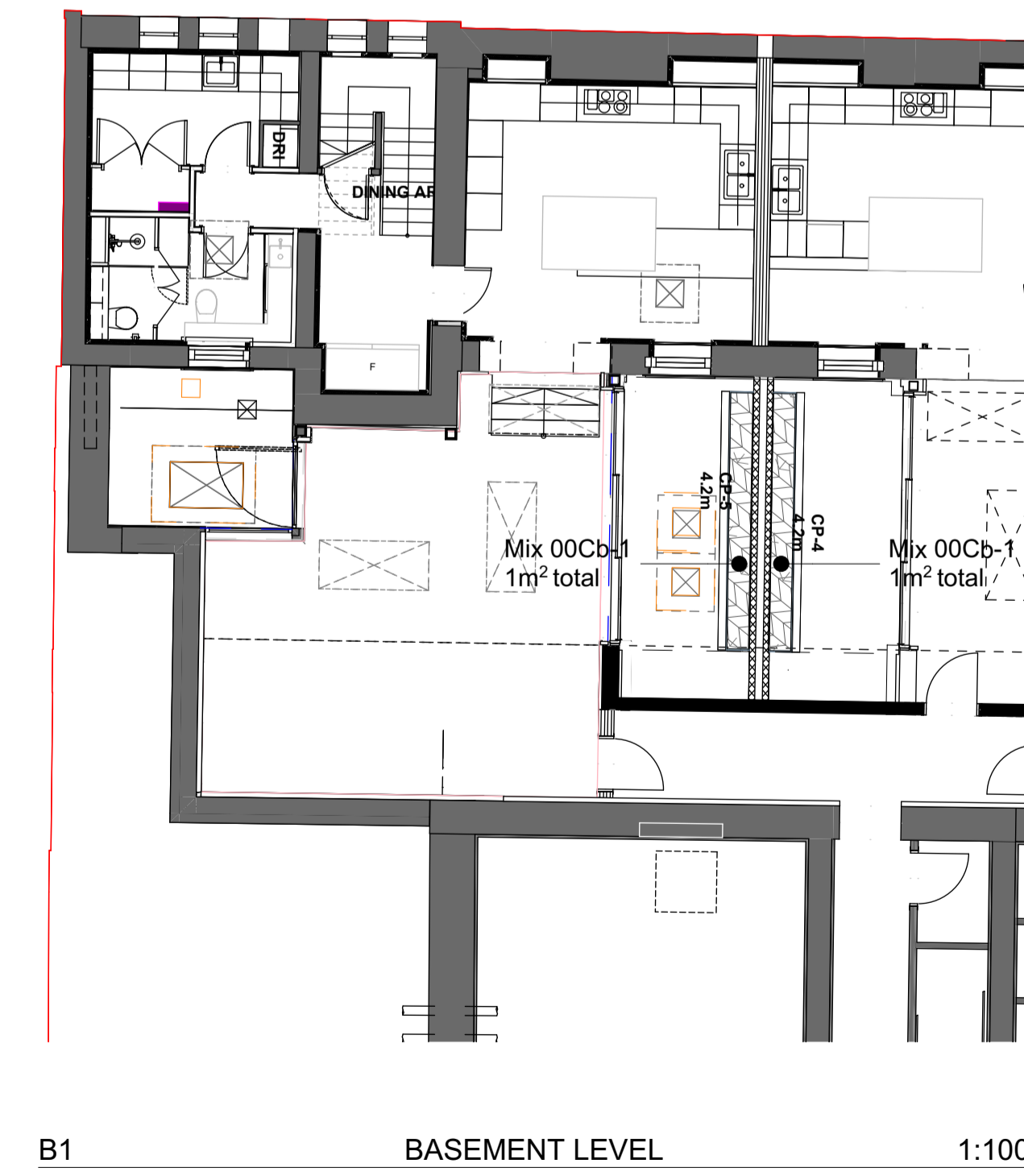
Client
MIDDLESEX ANNEXE LLP

Title
SOFT LANDSCAPE GA PLAN - GROUND FLOOR - SHEET 01

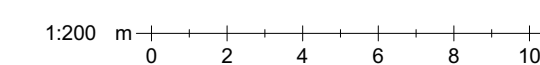
Drawing No. **BPD-HLM-00-00-DR-L-45001** Revision **C08**

Scale @ A1 **1:100** Drawn **BH**

Date **04/10/2018** Checked **HLM**



B1 BASEMENT LEVEL 1:100



© HLM Architects
2nd Floor
The Ruskin Building
Tudor Square
Sheffield S1 2LA

www.hlmarchitects.com
T. +44 (0) 114 263 9600
F. +44 (0) 114 263 9650
sheffield@hlmarchitects.com