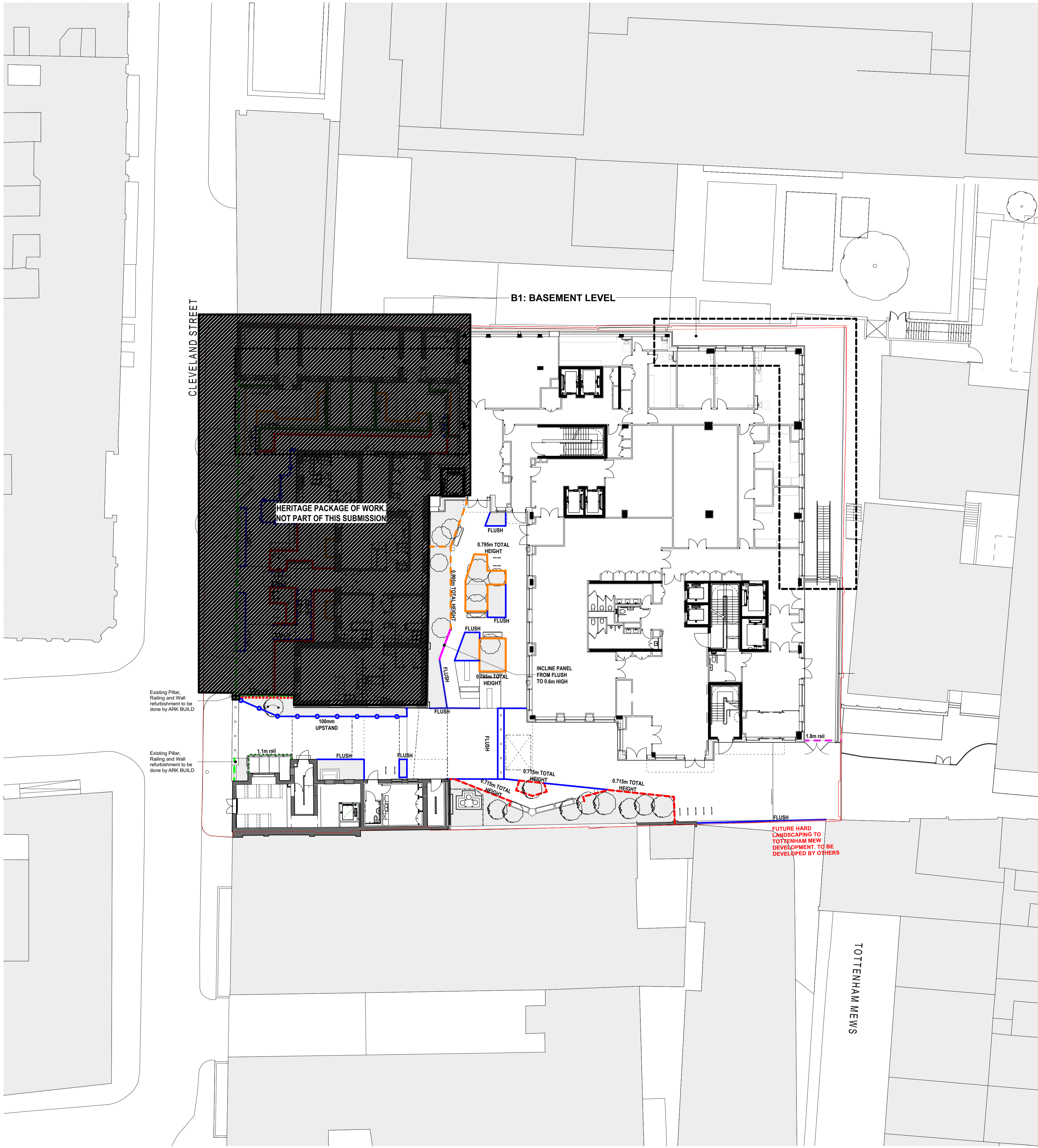
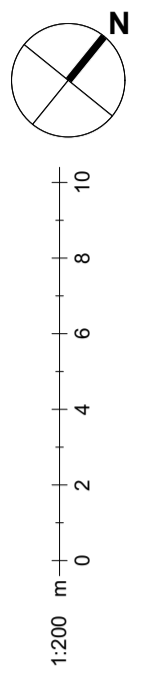


Landscape Boundary Plan Key NEW BUILD

- Edging Type 1**
Planter system - Refer to Hard Landscape Plan BPD-HLM-NB-00-DR-L-30001 & 30002 for details
Cor-ten, 6(W)mm, height varies.
- 0.795m TOTAL HEIGHT. FROM BASE PLATE TO TOP OF PLANTER.
- - 0.995m TOTAL HEIGHT. FROM BASE PLATE TO TOP OF PLANTER.
- - - 0.715m TOTAL HEIGHT. FROM BASE PLATE TO TOP OF PLANTER.
- INCLINED PANEL. FROM 0.395m TOTAL HEIGHT TO 0.995m TOTAL HEIGHT. FROM BASE PLATE TO TOP OF PLANTER.
- Edging Type 2**
Steel edging system, Flush - Refer to Hard Landscape Plan BPD-HLM-NB-00-DR-L-30001 & 30002 for details
- Edging Type 2b**
Steel edging system, 100mm upstand - Refer to Hard Landscape Plan BPD-HLM-NB-00-DR-L-30001 & 30002 for details
- Boundary Type 3**
Railing to MRI Suite - Side Entrance, Black powder coated 1800mm (H)
Refer to detail drawing BPD-HLM-NB-00-DR-L-25401

Notes
Check all dimensions on site. Do not scale from this drawing
Report any discrepancies and omissions to HLM Architects
This Drawing is Copyright ©



Rev	Description	Date	By	Chk
C01	REVISED SITE LAYOUT AS CLOUDED	02.08.23	HV	AO
T02	AMENDED AS NOTED	18.03.22	HV	AO
T01	NB STAGE 4 TENDER ISSUE	12.02.21	HV	AO

Revisions

Project
BEDFORD PASSAGE DEVELOPMENT

Client
MIDDLESEX ANNEXE LLP

Title
LANDSCAPE BOUNDARY PLAN - GROUND FLOOR

Drawing No. **BPD-HLM-NB-00-DR-L-25001** Revision **C01**

Scale @ A1 **1:200** Drawn **HV**
Date **12.02.2021** Checked **HLM**

HLM Architects
© HLMarchitects
2nd Floor
The Ruskin Building
Tudor Square
Sheffield S1 2LA
www.hlmarchitects.com
T. +44 (0) 114 263 9600
F. +44 (0) 114 263 9650
sheffield@hlmarchitects.com

