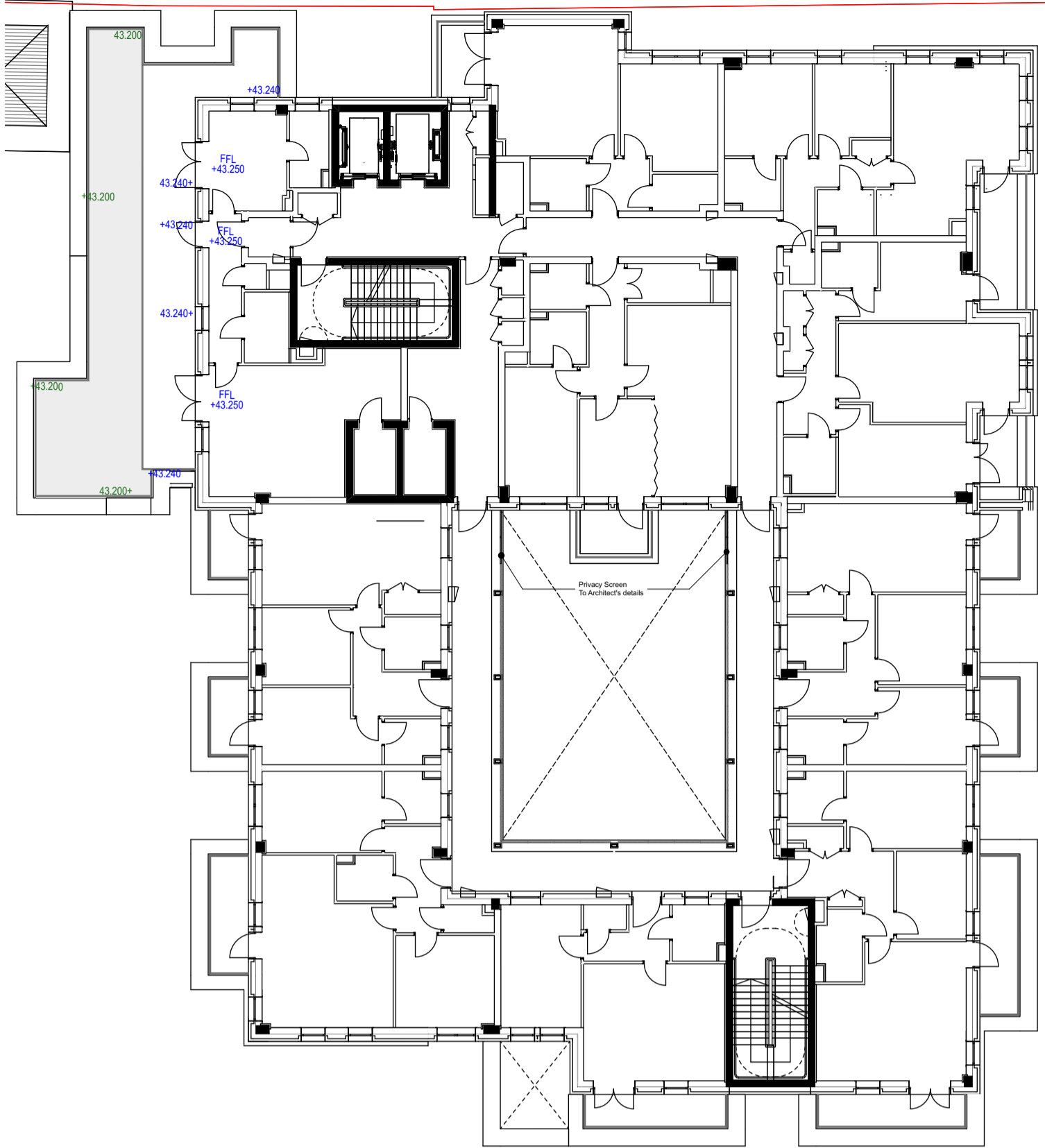
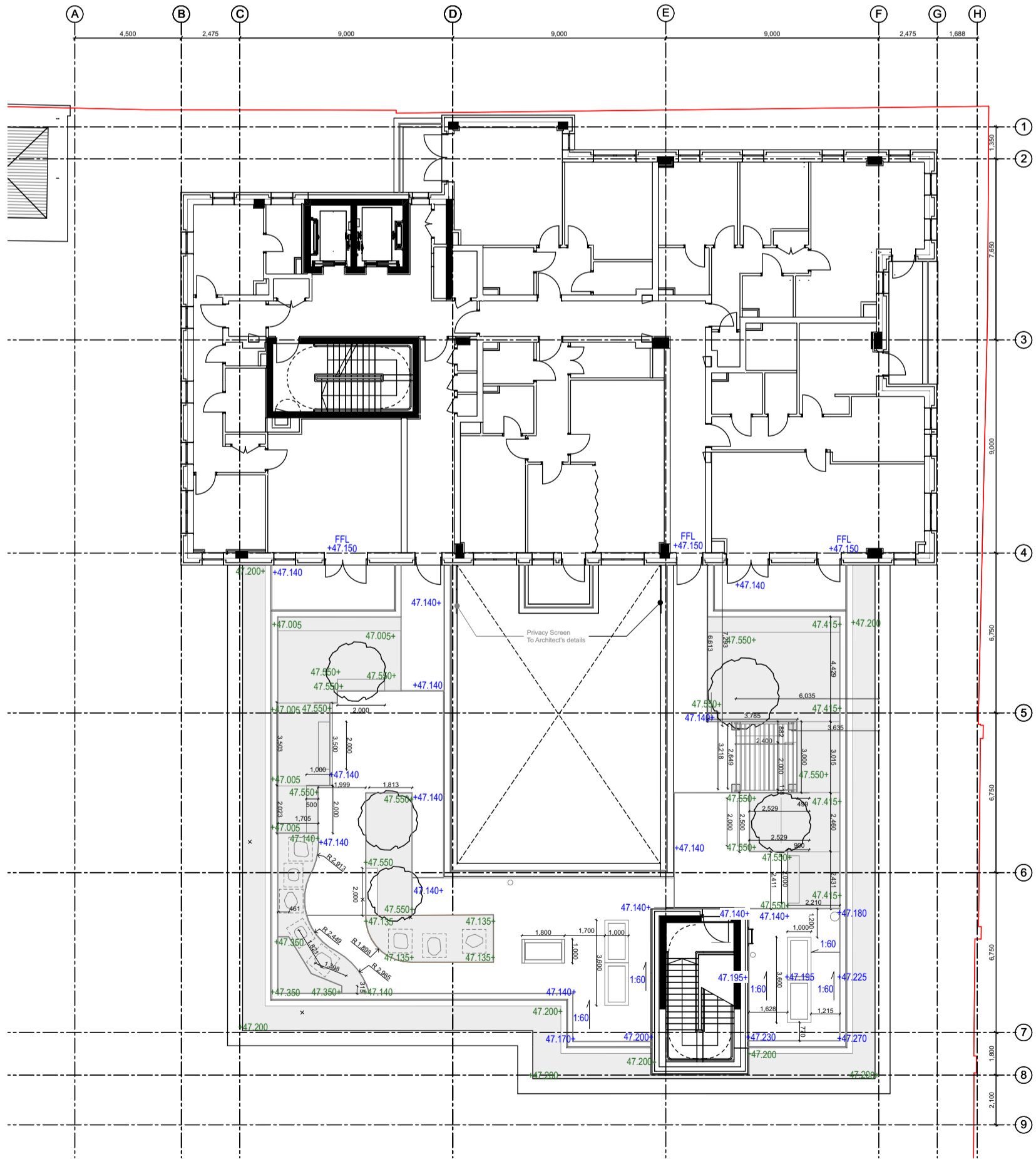


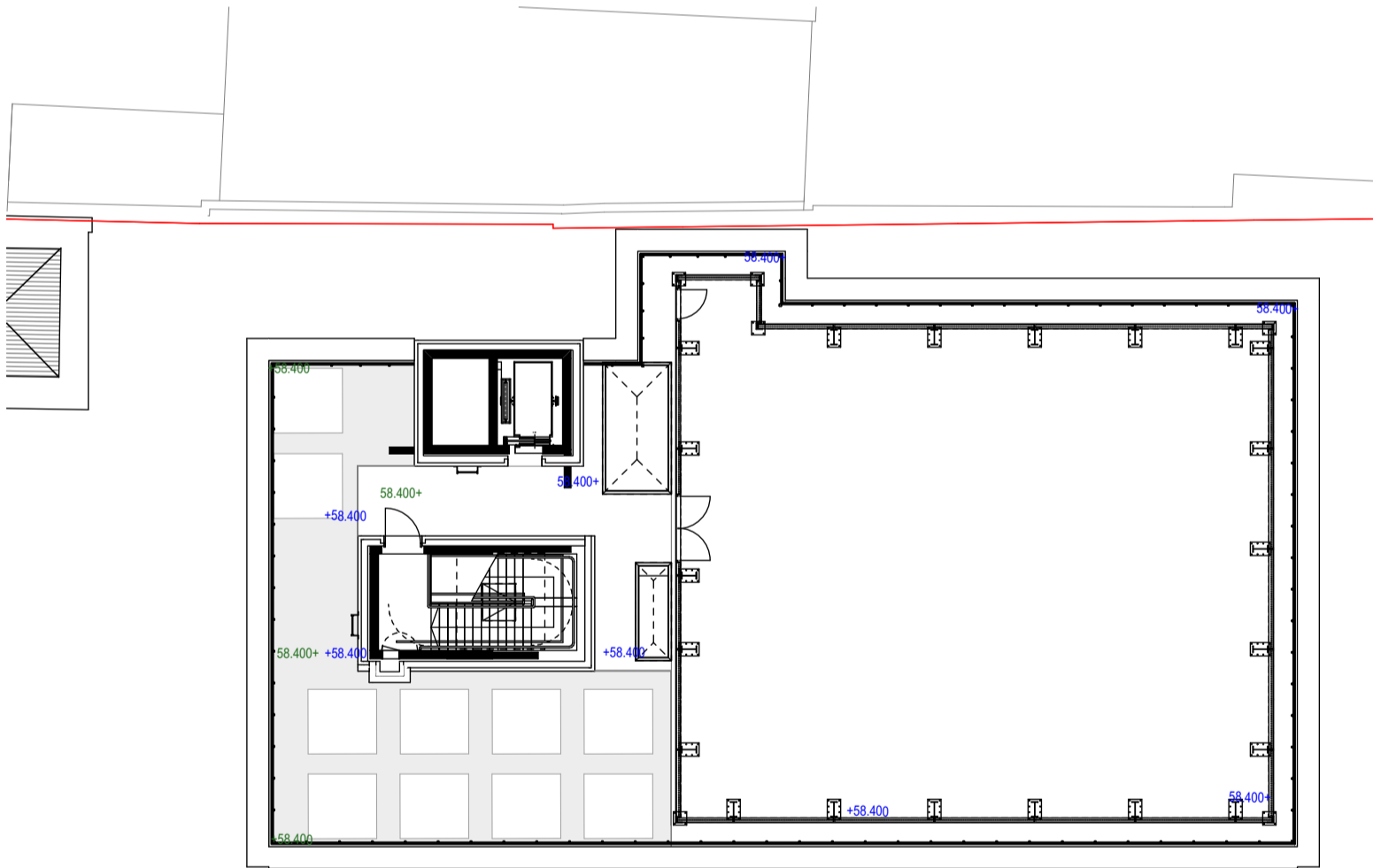
LEVEL 03 - COURTYARD TERRACE 1:200



LEVEL 04 - GREEN ROOF TERRACE 1:200



LEVEL 05 - ROOF TERRACE 1:200

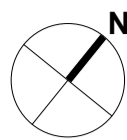


LEVEL 08 - ROOF PLANT 1:200

Landscape Levels Key

- +26.76 Existing Levels
- +26.76 Proposed Level for Section 278 Work
- +26.76TOK Proposed Top of Kerb Level for Section 278 Work
- +26.88 Proposed Levels
- +26.88 tow Proposed Top of Wall Level
- +26.88 top Proposed Top of Planter Level
- +26.88 Proposed Levels within Planter
- 1:21 Proposed Falls
- 1:21 Proposed Falls for Section 278 Work
- 1:12 Proposed Ramp Slopes
- Level Break
- EJ Expansion Joints
- Refer to Hard Landscape Drawing BPD-HLM-00-00-DR-L-30001 and BPD-HLM-00-00-DR-L-30002 for Details
- Soft Landscape
- Hard Landscape
- Approximate location of manhole / downpipe. Refer to Engineer's drawings for details.
- Approximate location of attenuation tank. Refer to Engineer's drawings for details.
- Surface Drainage Channel. Refer to AECOM Civils Drainage Plans

Notes
Check all dimensions on site. Do not scale from this drawing
Report any discrepancies and omissions to HLM Architects
This Drawing is Copyright ©



1:200 m 0 2 4 6 8 10

Revision C03 note:

Setting out dimension added to concrete foundation to 5th Floor terrace

C03	SETTING OUT DIMENSION ADDED TO CONCRETE FOUNDATION	22.09.23	HV	HLM
C02	AMENDMENTS AS PER LDT'S COMMENT	06.09.23	HV	AO
C01	REVISED SITE LAYOUT AS CLOUDED	02.08.23	HV	AO
T02	REVISED STAGE A TENDER ISSUE	11.04.22	HV	AO
T01	NB STAGE A TENDER ISSUE	12.02.21	HV	AO
Rev	Description	Date	By	Chk

Revisions

Project

**BEDFORD PASSAGE
DEVELOPMENT:
BEDFORD HOUSE
BEDFORD COURT**

Client

**MIDDLESEX ANNEXE
LLP**

Title

**LANDSCAPE LEVELS AND
SETTING OUT - SHEET 03**

Drawing No.	Revision
BPD-HLM-NB-ZZ-DR-L-00013	C03

Scale @ A1	Drawn
1:100	HV
Date	Checked
12.02.2021	HLM



© HLMArchitects
2nd Floor
The Ruskin Building
Tudor Square
Sheffield S1 2LA

www.hlmarchitects.com
T. +44 (0) 114 263 9600
F. +44 (0) 114 263 9650
sheffield@hlmarchitects.com

1:100 m 0 1 2 3 4 5