

7.5 Proposed Architectural Lighting

7.5.1 Proposed Long Elevation

Entrance Signage

The proposed Camden Market Stables main entrance signage takes inspiration from the late 2000s entrance signage with black background and contrasting graphics. The proposed design includes integrated lighting to illuminate both the form of the arch and graphics in a subtle effect for function during low light conditions as well as visual interest.

The proposed entrance signage design includes 'Stables' for navigation purposes which subsequently acknowledges the history and heritage of the site. This will reinstate the market's heritage identity.

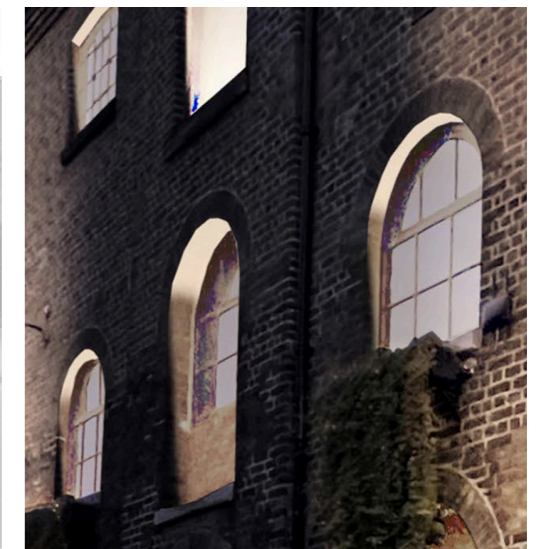
Architectural Lighting

The inclusion of integrated lighting will create a continuous rhythm of the arch along Chalk Farm Building facade windows leading to the entrance signage, in both architectural lighting effect and architectural form. A mock up of the facade lighting was prepared by LabTech for review. This is included, see section 7.5.3 (page 27).

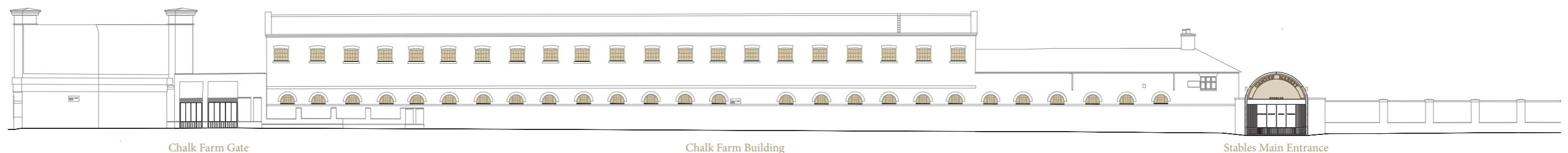
— Proposed lighting



Concept illustrating the continuity of the arch along Chalk Farm Road building leading to the proposed entrance signage.



Proposed lighting effect using diffused linear LED profile to typical external windows.



Proposed long elevation of Chalk Farm Building showing proposed architectural lighting on the external windows on both levels and the proposed Stables entrance signage and gate.

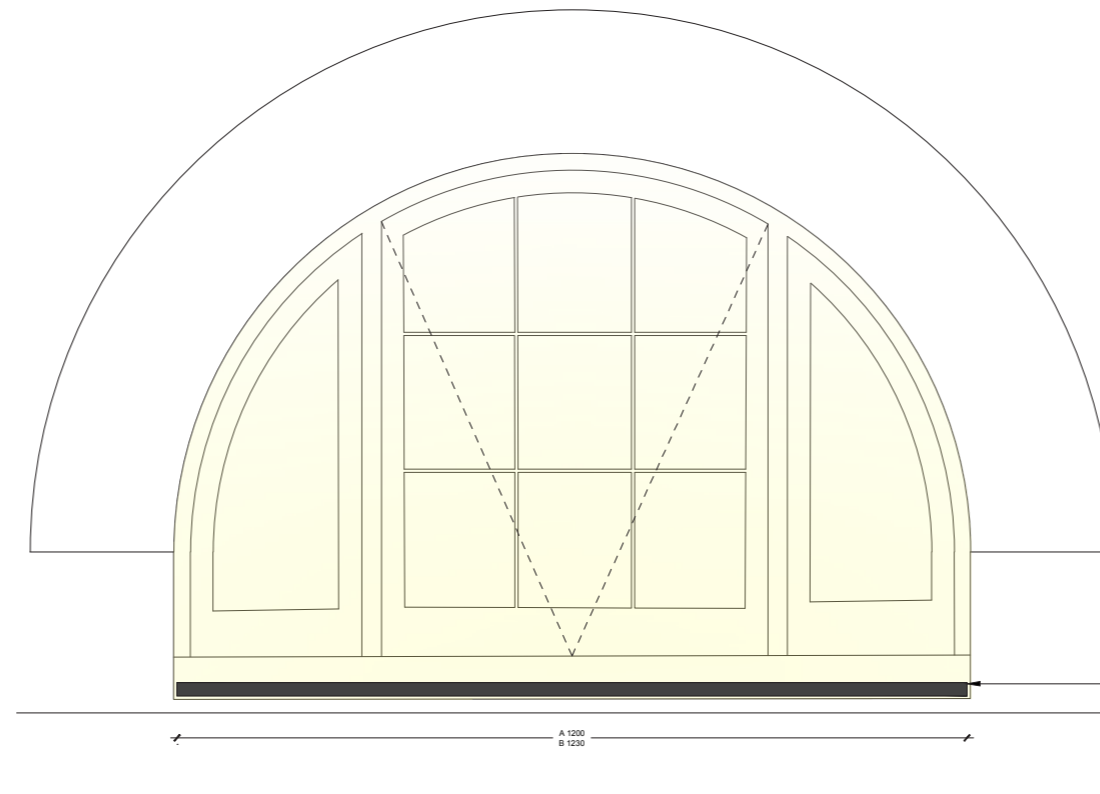
7.5 Proposed Architectural Lighting

7.5.2 Proposed Details

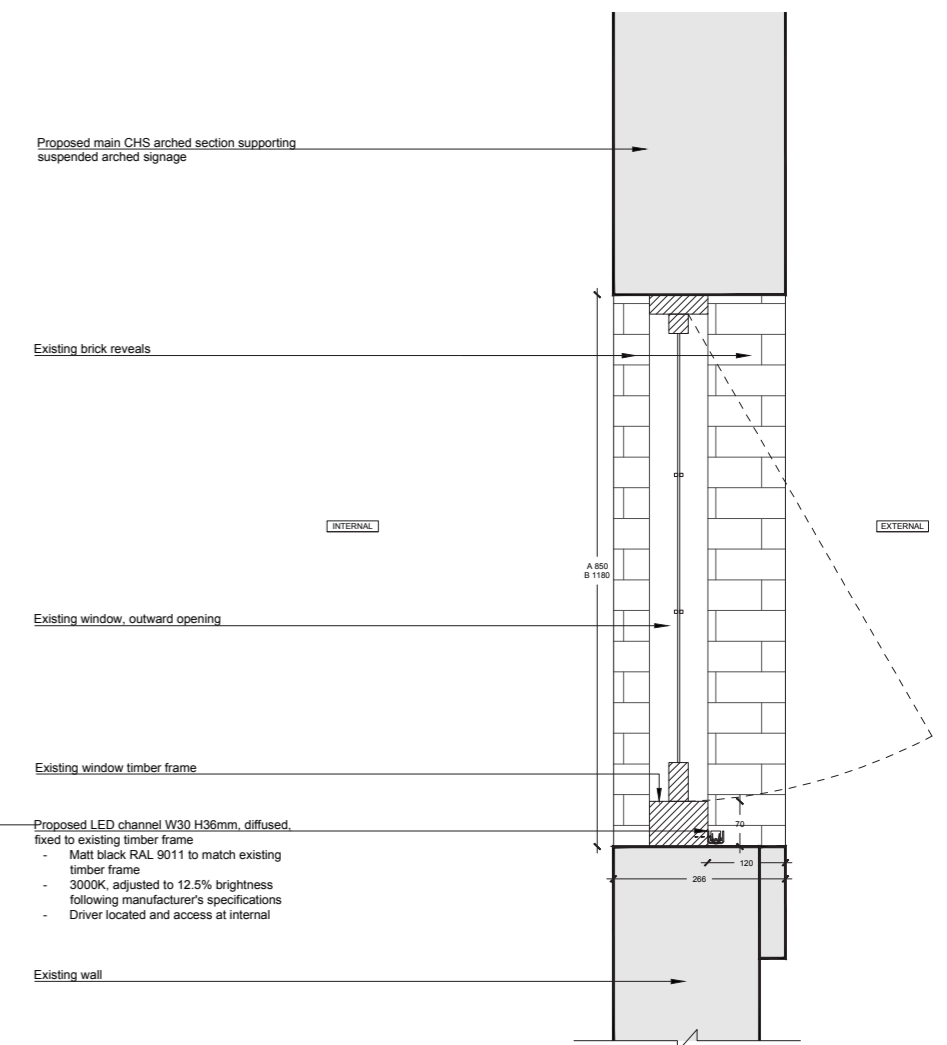
Lighting
LED, 3000K colour temperature, adjusted to 12.5% brightness

Support
Surface mounted, fixed to existing timber frame

Finish
RAL 9011 matt black to match existing timber frame



1 PROPOSED FRONT ELEVATION (EXTERNAL)
SCALE: 1:5 A3



2 PROPOSED DETAIL C
SCALE: 1:5 A3

7.5 Proposed Architectural Lighting (Addendum)

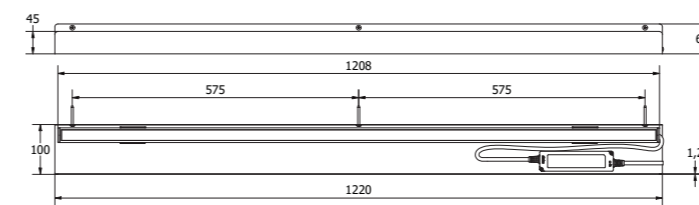
7.5.2 cont. Proposed Details (Addendum)

Support

Proposed lighting profile are surface mounted, fixed to existing timber frame. Existing timber frames were extensively repaired during the 2015-18 conservation works to remove the listed stables from the Heritage at Risk Register (HAR), Historic England's list of endangered properties.

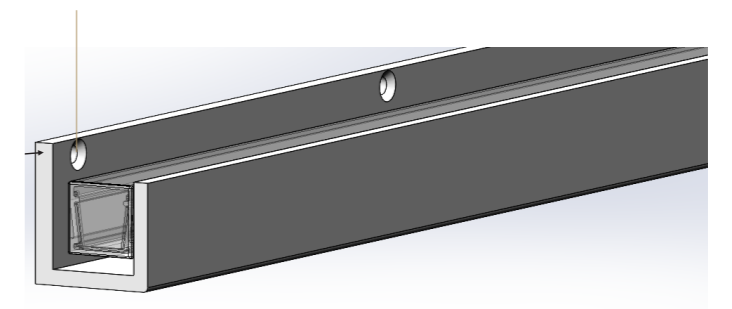


As existing window and frame. Proposed lighting will be mounted to the existing timber frame (indicated in dashed lines).

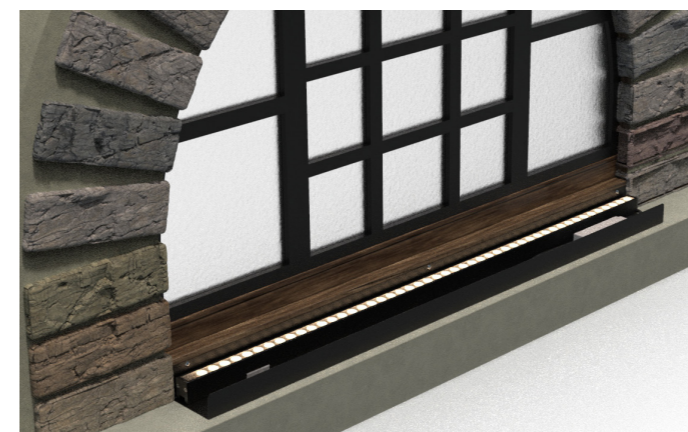


Proposed lighting profile

Fixing to existing timber frame



Detail of proposed lighting profile showing fixing positions, to existing timber frame.



Proposed mock-up



Proposed mock-up

7.5 Proposed Architectural Lighting

7.5.3 Proposed Mock Up



1
(Photos 1-4) 20% brightness



2



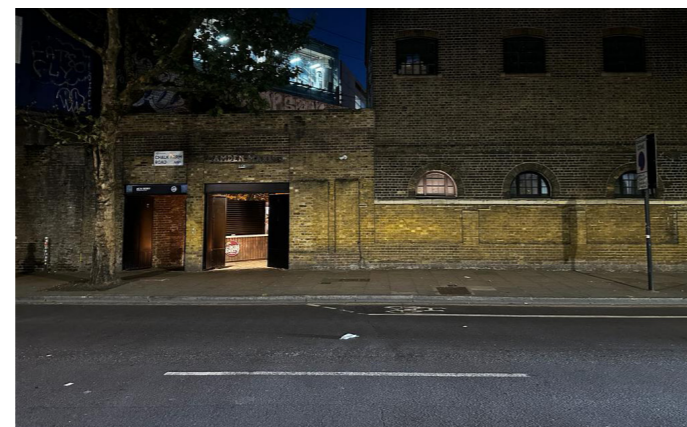
3



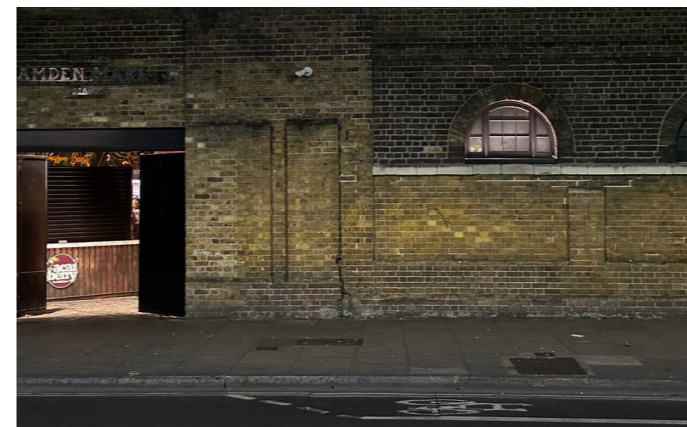
4



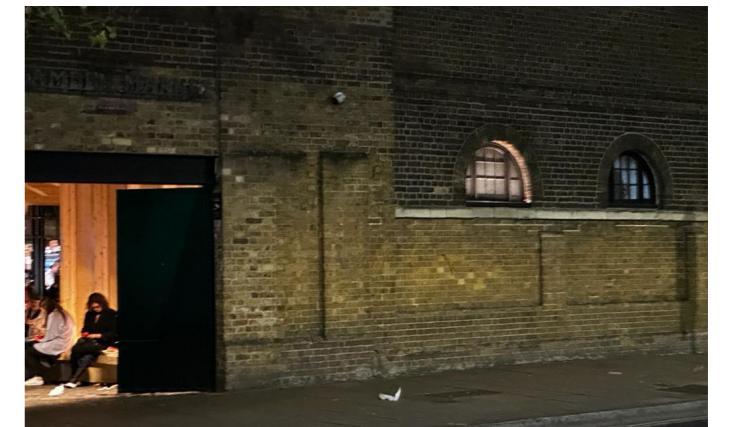
4
(Photos 4-8) Adjusted to 12.5% brightness. Photos and mock up were reviewed by TRACT on the 27th September 2023. We have received a positive collective feedback.



5



6



7