

PAVEMENT LICENCE JULY 2020

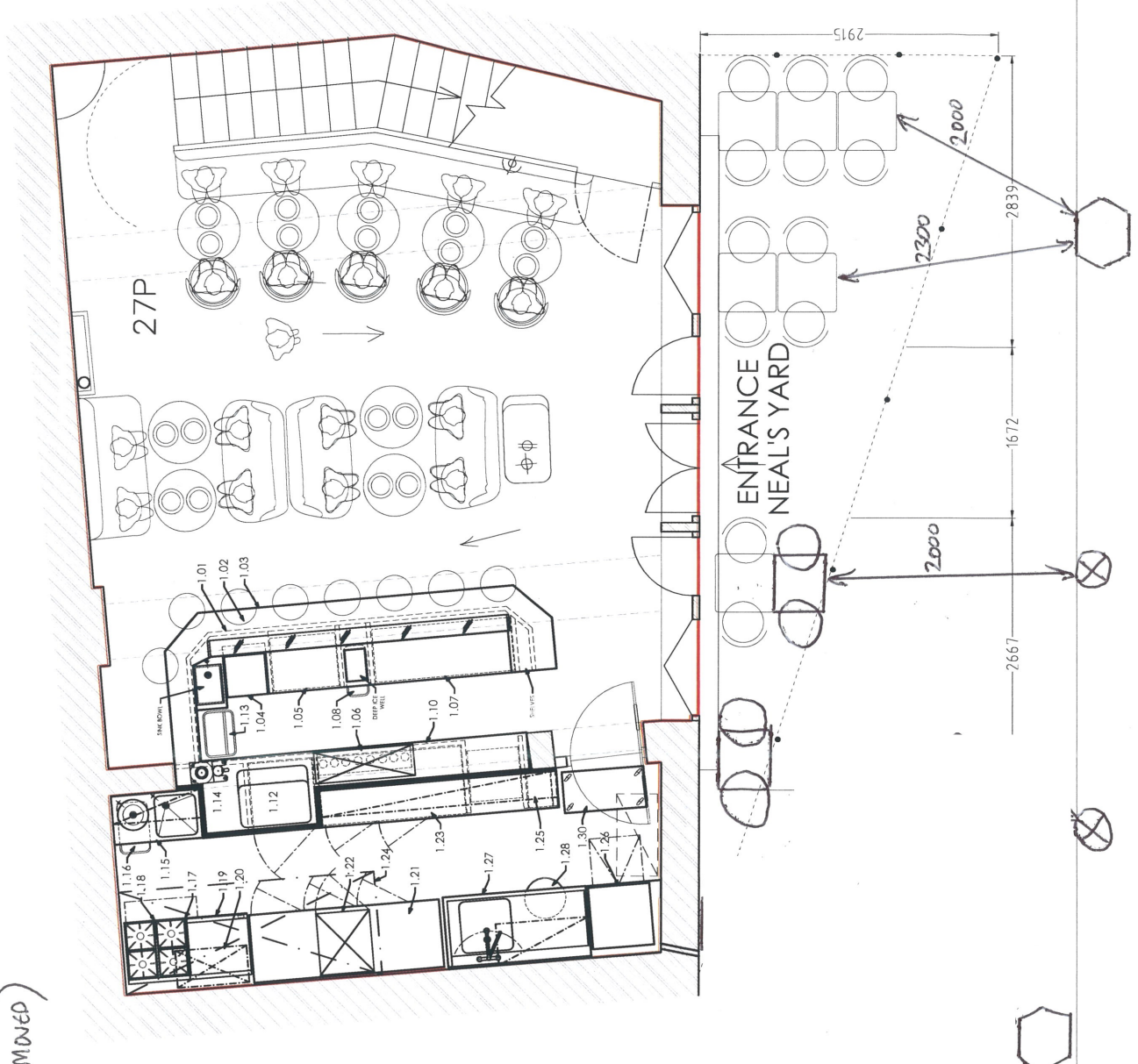


COMMUNAL SEATING



PLANTER (COMMUNAL SEATING RECENTLY REMOVED)

GROUND FLOOR PLAN



No.	Qty	Material	Description
1.01	1	BAR FRONT WITH WINE KEYS	TOP FITTED WITH INSET SINK
1.02	1	BOWL C/W HANO BLOCK / LEAF LAP	
1.03	1	DECORATIVE FRONT AND PANE'S TO INTERIOR DESIGNER	
1.04	1	DECORATIVE BAR SHIRT TO INTERIOR DESIGNER DETAIL WITH INSET	
1.05	1	CLEAR GLASS OVER WINE BOTTLES	
1.06	1	WINE BOTTLE BRACKET	
1.07	1	FRONTAL ENGINE 4.4 TC WINE DISPENSER	
1.08	1	FRONTAL ENGINE 4.4 TC WINE DISPENSER	
1.09	1	BOTTLE BIN	
1.10	1	STAINLESS STEEL BACK COUNTER C/W OPEN UNDER PASS	
1.11	1	THROUGH BASKET BURNERS C/W 30mm THICK STAINLESS STEEL	
1.12	1	FRONT WORKTOP TO CEILING	
1.13	1	2 GROUP ESPRESSO COFFEE MACHINE	
1.14	1	2 GROUP ESPRESSO COFFEE MACHINE	
1.15	1	HAND BASIN C/W HANO BLOCK / LEAF LAP WATER FILTER AND WATER PUMP FOR COFFEE MACHINE - HOUSED UNDER AND WALL	
1.16	1	WILLIAMS BROS LOW HEIGHT REFRIGERATOR WITH 2 DRAWERS	
1.17	1	WILLIAMS BROS LOW HEIGHT REFRIGERATOR WITH 2 DRAWERS	
1.18	1	INDUSTRIAL COFFEE BREWING MACHINES UNIT	
1.19	1	INDUSTRIAL COFFEE BREWING MACHINES UNIT	
1.20	1	INDUSTRIAL COFFEE BREWING MACHINES UNIT	
1.21	1	FOSTER EIGHT COUNTER REFRIGERATION	
1.22	1	CONVEYOR BELT SYSTEM	
1.23	1	CONVEYOR BELT SYSTEM	
1.24	1	CONVEYOR BELT SYSTEM	
1.25	1	CONVEYOR BELT SYSTEM	
1.26	1	CONVEYOR BELT SYSTEM	
1.27	1	WASHER WITH INTEGRAL WATER SOFTENER STACKED	
1.28	1	WASHER WITH INTEGRAL WATER SOFTENER STACKED	
1.29	1	WASHER WITH INTEGRAL WATER SOFTENER STACKED	
1.30	1	WASHER WITH INTEGRAL WATER SOFTENER STACKED	
1.31	1	WASHER WITH INTEGRAL WATER SOFTENER STACKED	
1.32	1	WASHER WITH INTEGRAL WATER SOFTENER STACKED	
1.33	1	WASHER WITH INTEGRAL WATER SOFTENER STACKED	
1.34	1	WASHER WITH INTEGRAL WATER SOFTENER STACKED	
1.35	1	WASHER WITH INTEGRAL WATER SOFTENER STACKED	
1.36	1	WASHER WITH INTEGRAL WATER SOFTENER STACKED	
1.37	1	WASHER WITH INTEGRAL WATER SOFTENER STACKED	
1.38	1	WASHER WITH INTEGRAL WATER SOFTENER STACKED	
1.39	1	WASHER WITH INTEGRAL WATER SOFTENER STACKED	
1.40	1	WASHER WITH INTEGRAL WATER SOFTENER STACKED	

NOTE:
OUTSIDE SEATING SIZES:
TABLES 570mm X 570mm
CHAIRS 400mm X 400mm

NOTE: NEAL'S YARD IS A
PEDESTRIAN SPACE WITH
NO ROADS OR KERBS

Date	Detail	Rev
22/07/2016	Outside seating layout revision	E
19/10/2013	Seating layout added	D
01/10/2013	Layout Revision	C
18/09/2013	Layout Revision	B
17/09/2013	Layout Revision	A

Issue Status:	INFORMATION
Client:	CVS Ltd.
Project:	EXPERIMENTAL COCKTAIL CLUB 8-10 Neal's Yard, London WC2.
Title:	PROPOSED LAYOUT
Area:	...
Level:	GROUND FLOOR
Scale:	1:20@A1
Date:	01-09-13
Dwg No.:	1866-100 Rev E
Prepared by:	CB

MJB COMMERCIAL KITCHEN PROJECTS The Stable, Home Farm, Fyfield Ave, Oak DM Farnham, Surrey GU14 7JG Tel: 01252 720099 Fax: 01252 720099 Mob: 01775 646 430 Email: mjb@commercialkitchenprojects.com
--