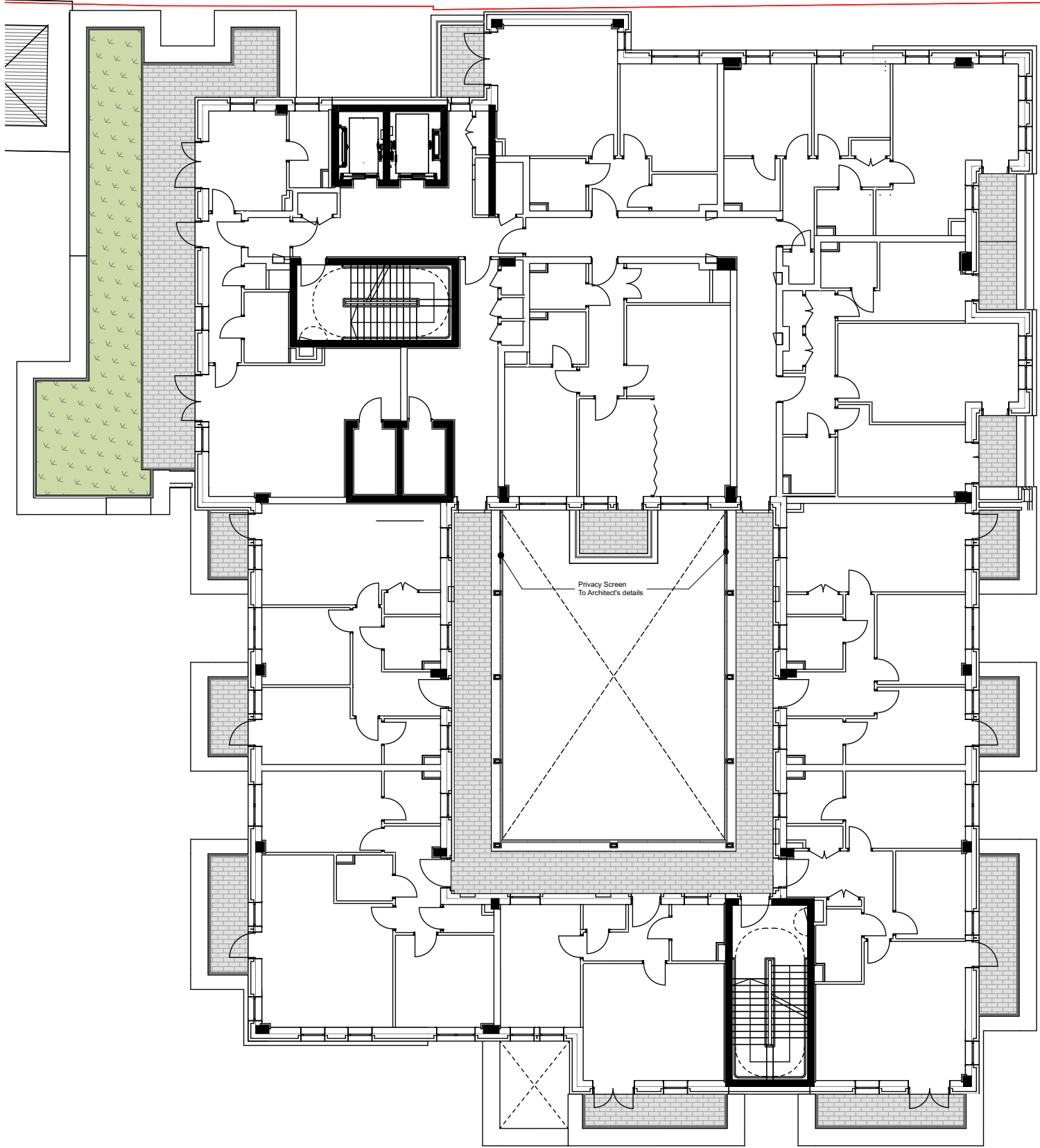
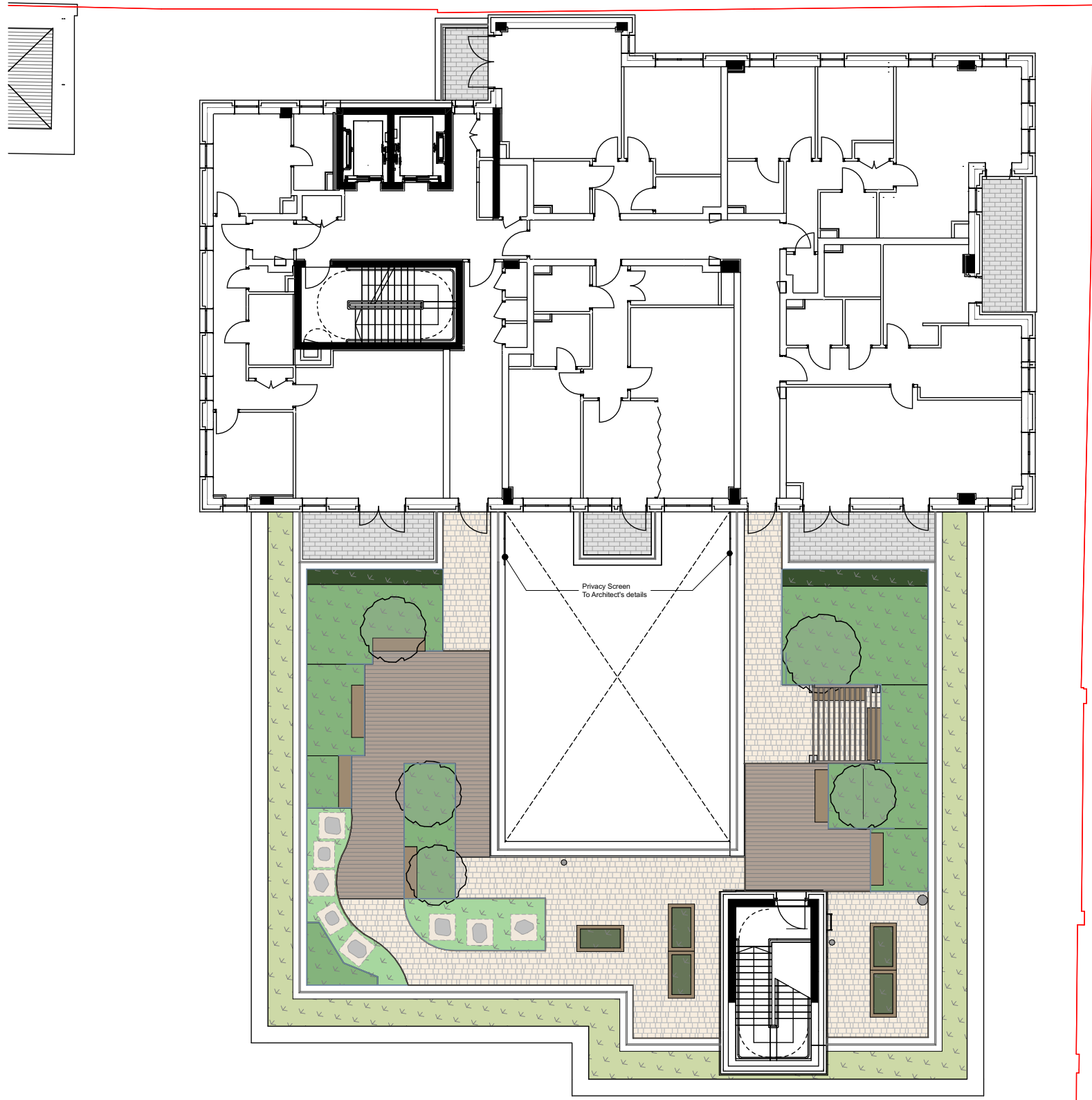


LEVEL 03 - COURTYARD TERRACE 1:200

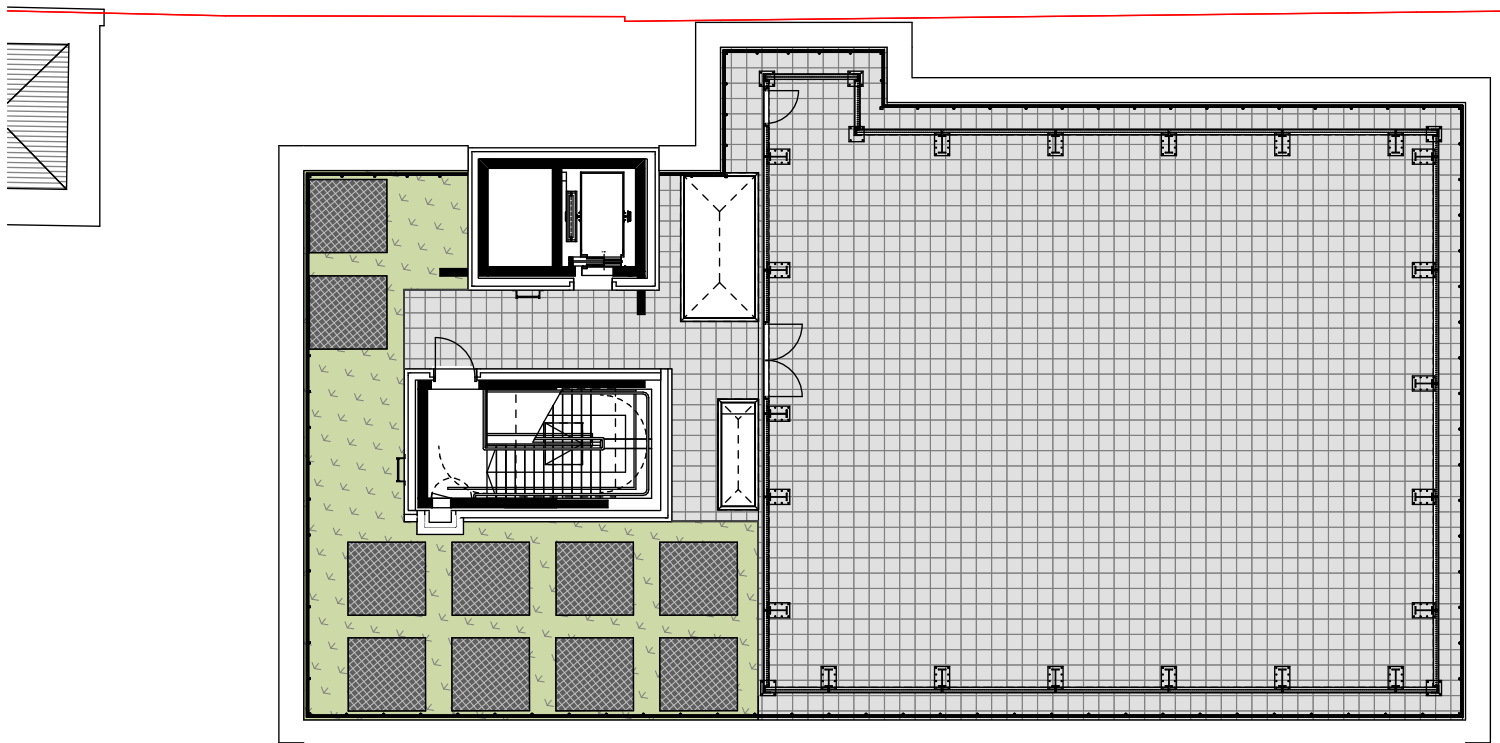
Paving
amendments as
per LD's
comments



LEVEL 04 - GREEN ROOF 1:200



LEVEL 05 - ROOF TERRACE 1:200



LEVEL 08 - ROOF PLANT 1:200

- Landscape GA Key**
- Concrete Paving Type 1**
Permeable Concrete Paving (80mm)
Blanc (40%), mid grey (20%), sandstone (40%)
 - Concrete Paving Type 2**
Permeable Concrete Paving (80mm)
Mid Grey
 - Concrete Paving Type 3**
Textured Flag Paving (65mm)
Natural, 400 x 400mm
 - Concrete Paving Type 4**
Permeable Concrete Paving (80mm), Sandstone
White/ grey gravel in 200mm gaps in between pavers
 - Decking**
Porcelain Decking (20mm)
 - Balcony Paving**
Permeable Paving (60mm) Sandstone
Refer to Architects Drawing Package for full extent
 - Stepping Paving**
Block Paving (80mm)
Sandstone, 300 x 300mm
 - Bench**
 - Wall Type 3**
Boundary walls to balconies and terrace
boundaries with railing
Refer to Architects detail
 - Play Boulders**
 - Metal Pergola**
 - Litter Bin**
 - Screening Panel**
To Architect's details
 - Biodiverse Green Roof**
 - Artificial Grass**
To play areas on Level 05
 - Shrub & Perennial Planting**
in raised steel planters
 - Hedge Planting**
 - Raised Vegetable Bed**
 - Proposed large shrub**

Notes
Check all dimensions on site. Do not scale from this drawing
Report any discrepancies and omissions to HLM Architects
This Drawing is Copyright ©



C02	AMENDMENTS AS PER LD'S COMMENT	06.09.23	HV	AO
C01	REVISED SITE LAYOUT AS CLOUDED	02.08.23	HV	AO
T02	REVISED STAGE A TENDER ISSUE	11.04.22	HV	AO
T01	NB STAGE A TENDER ISSUE	12.02.21	HV	AO
Rev	Description	Date	By	Chk

Revisions

Project

**BEDFORD PASSAGE
DEVELOPMENT:
BEDFORD HOUSE
BEDFORD COURT**

Client

**MIDDLESEX ANNEXE
LLP**

Title

**LANDSCAPE GA PLAN -
TERRACES**

Drawing No.

BPD-HLM-NB-ZZ-DR-L-00003

Revision

C02

Scale @ A1

1:200

Drawn

HV

Date

12.02.2021

Checked

HLM



© HLMArchitects
2nd Floor
The Ruskin Building
Tudor Square
Sheffield S1 2LA

www.hlmarchitects.com
T. +44 (0) 114 263 9600
F. +44 (0) 114 263 9650
sheffield@hlmarchitects.com

1:200 m 0 2 4 6 8 10