



- New Build Landscape GA Key**
- Stone Paving Type 3**
Granite Tactile Paving (50mm)
 - Stone Paving Type 5**
Slab Paving (Existing)
 - Stone Paving Type 6**
Yorkstone Paving (50mm)
300 x random length 300-600mm
 - Stone Paving Type 7**
Block Paving (50mm)
200 x 200 mm
 - Stone Paving Type 8**
Yorkstone Paving (50mm)
200 x random length 200-400mm
 - Gravel**
Gravel Dressing surface
 - Concrete Paving Type 1A**
Concrete Flag Paving (50mm)
Buff Colour
 - Decking**
Composite Decking (22mm)
Deep brown or Charcola
 - Lightwells/ Vents**
 - Bench**
Concrete base with / without
timber seat
 - Boundary Type 1**
Existing railings to be refurbished insitu .
 - Boundary Type 1a & 1b**
Proposed railing, style to match existing.
 - Boundary Type 2 & 2B**
Hand Rail to all steps and ramps
 - Boundary Type 3**
Railing to MRI Suite. 1.8m high
 - Bollard**
 - Gates**
 - Cycle Parking**
2no. spaces per stand
 - Litter Bin**
 - Lighting Column**
 - Shrub & Perennial Planting**
 - Grass & Perennial Planting**
 - Hedge Planting**
 - Proposed Tree**
 - Existing Tree**

Notes
Check all dimensions on site. Do not scale from this drawing
Report any discrepancies and omissions to HLM Architects
This Drawing is Copyright ©

1:200 m 0 2 4 6 8 10

C02	AMENDMENTS AS PER LD'S COMMENT	06.09.23	HV	AO
C01	REVISED SITE LAYOUT AS CLOUDED	02.08.23	HV	AO
T04	AMENDED AS NOTED	11.04.22	HV	AO
T03	AMENDED AS NOTED	18.03.22	HV	AO
T02	AMENDMENTS AS BUBBLED	23.05.21	AO	AO
T01	NB STAGE 4 TENDER ISSUE	12.02.21	HV	AO
Rev	Description	Date	By	Chk

Revisions

Project

BEDFORD PASSAGE DEVELOPMENT

Client

MIDDLESEX ANNEXE LLP

Title

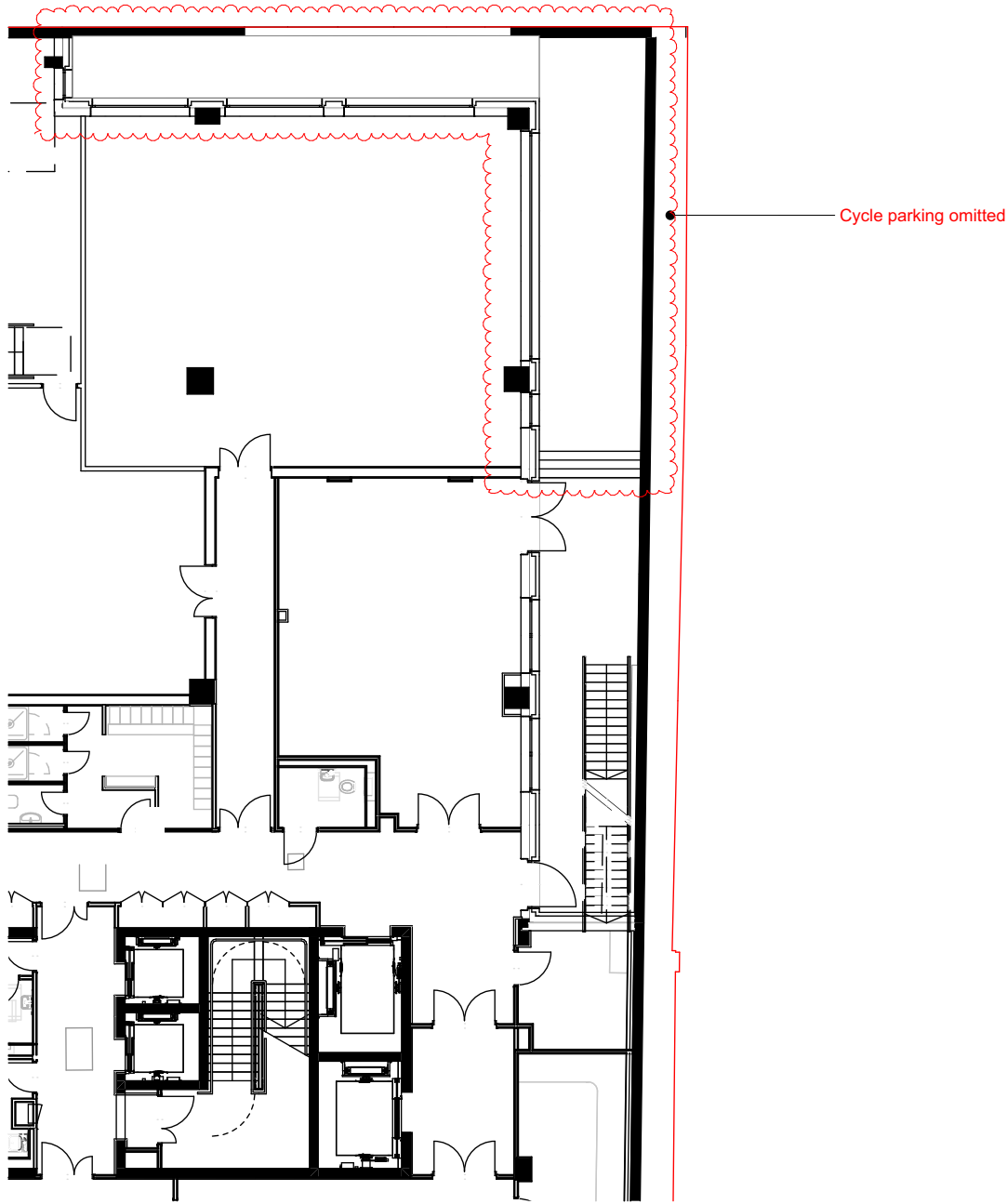
NB LANDSCAPE GA PLAN - GROUND FLOOR

Drawing No.	Revision
BPD-HLM-NB-ZZ-DR-L-00001	C02

Scale @ A1	Drawn
1:200	HV
Date	Checked
12/02/2021	HLM

© HLM Architects
2nd Floor
The Ruskin Building
Tudor Square
Sheffield S1 2LA

www.hlmarchitects.com
T. +44 (0) 114 263 9600
F. +44 (0) 114 263 9650
sheffield@hlmarchitects.com



**NOTE: TO BE READ WITH BPD-HLM-XX-XX-SP-L-00601
LANDSCAPE SPECIFICATION FOR DETAILS.**

1:200 m 0 2 4 6 8 10