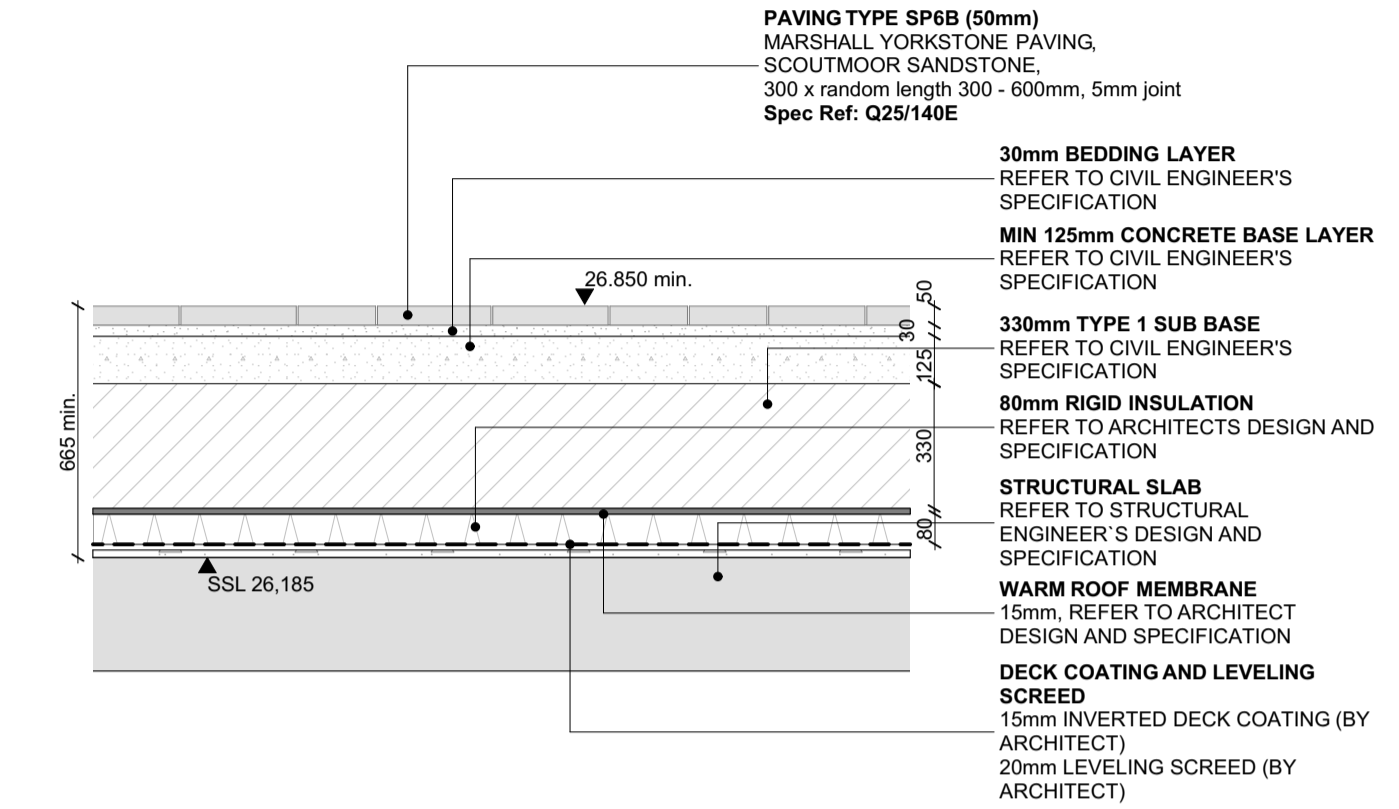
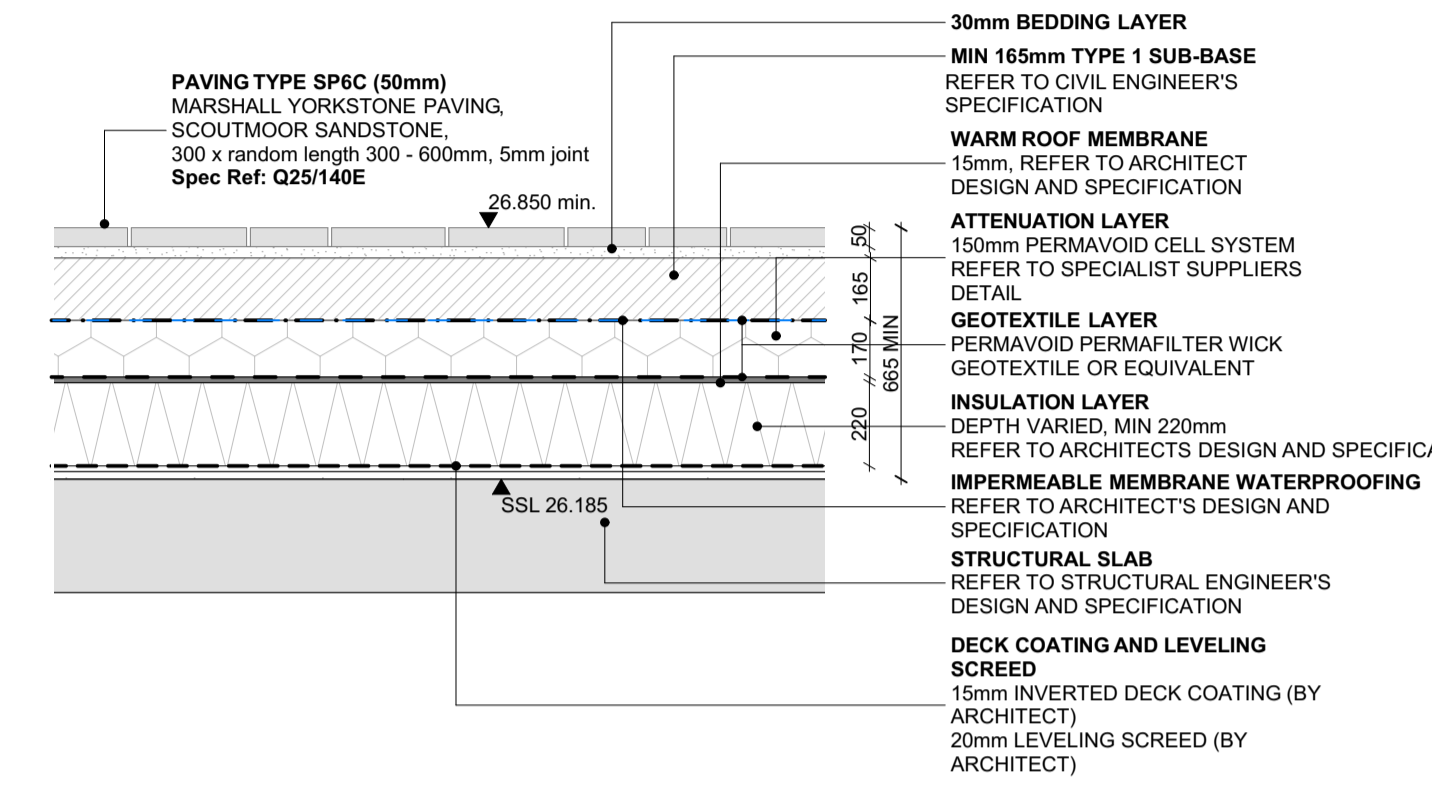


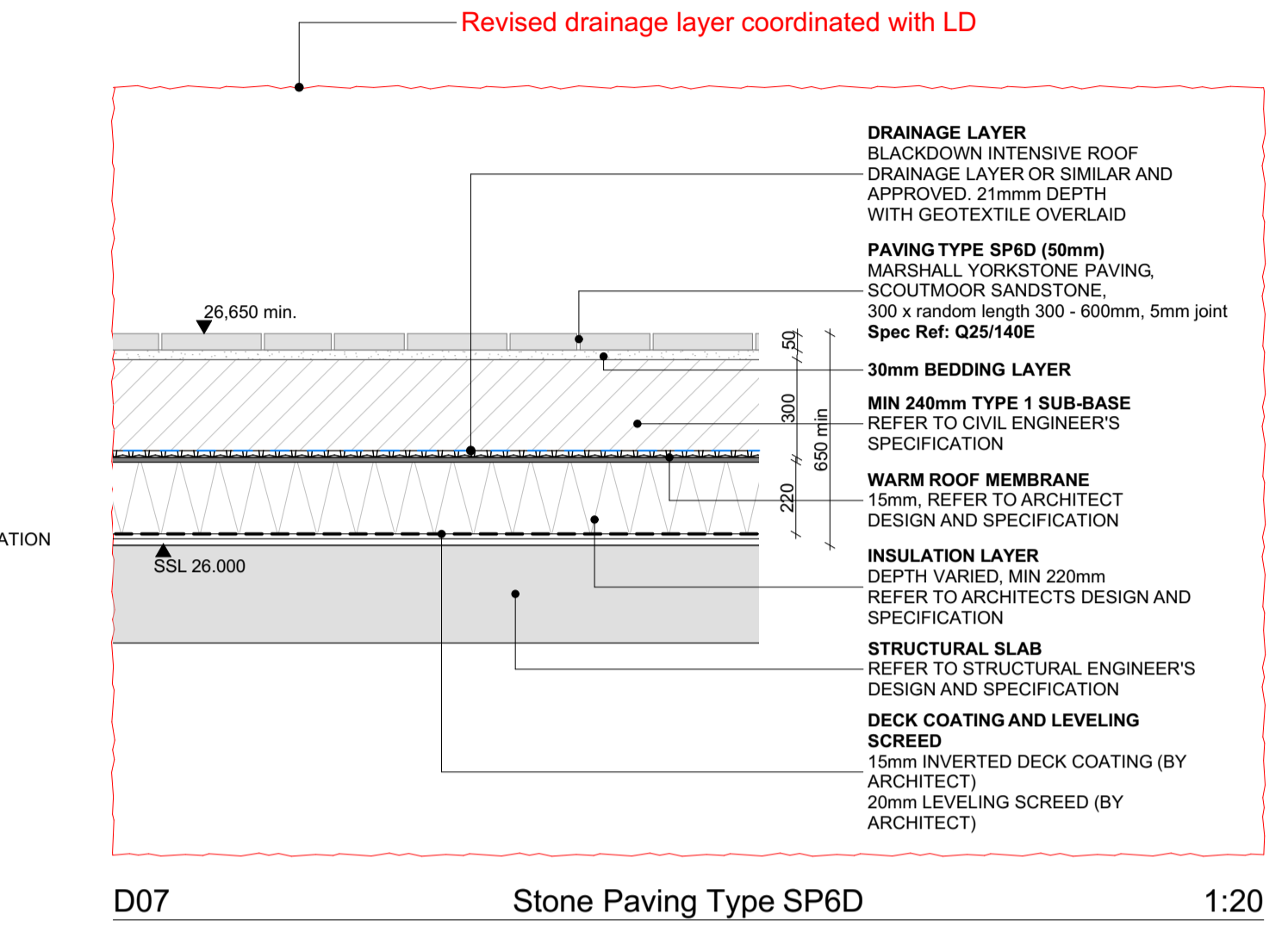
D04 Stone Paving Type SP6A 1:20



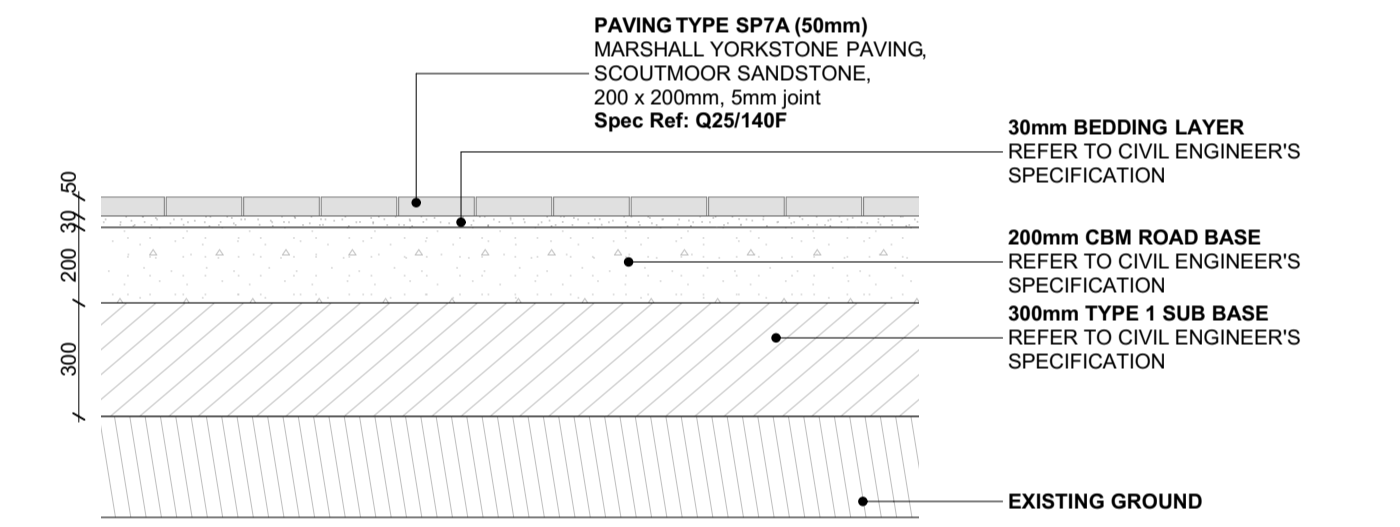
D05 Stone Paving Type SP6B 1:20



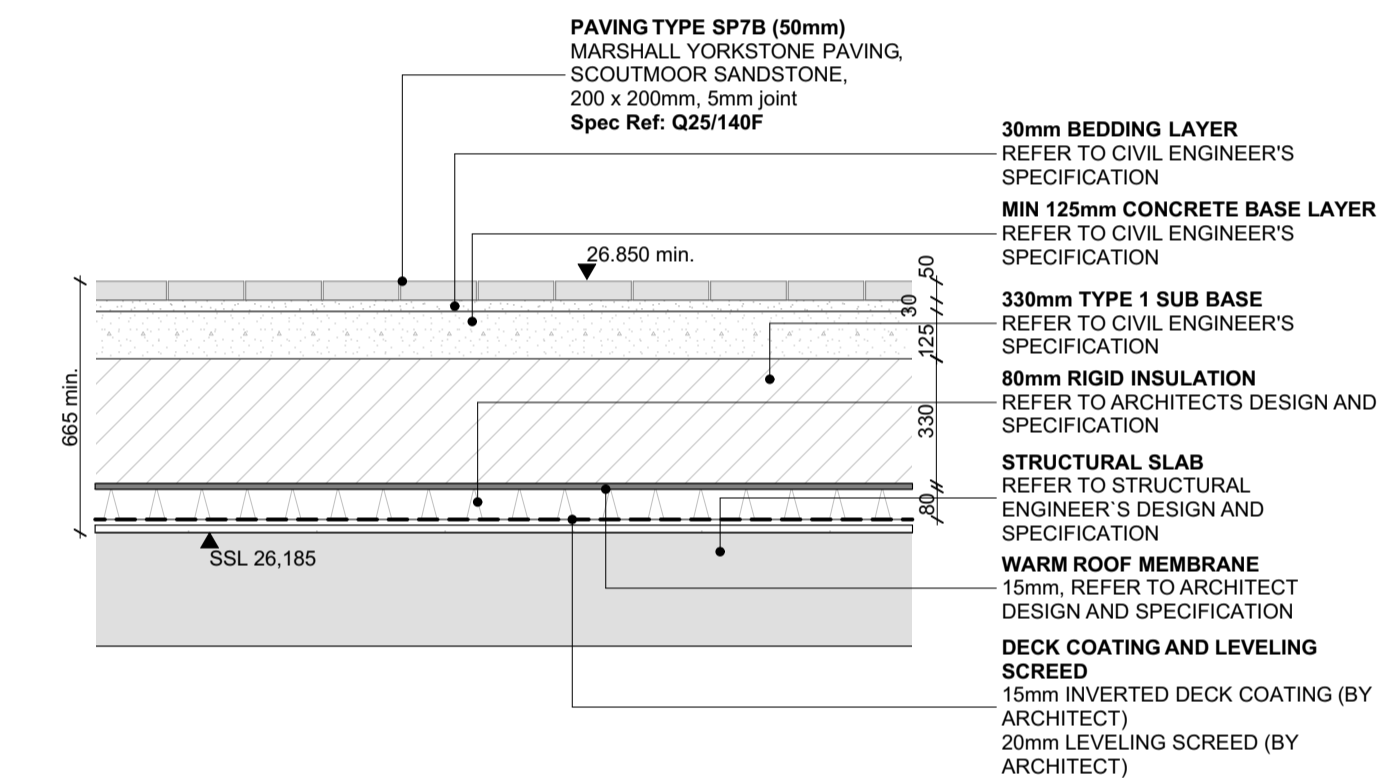
D06 Stone Paving Type SP6C 1:20



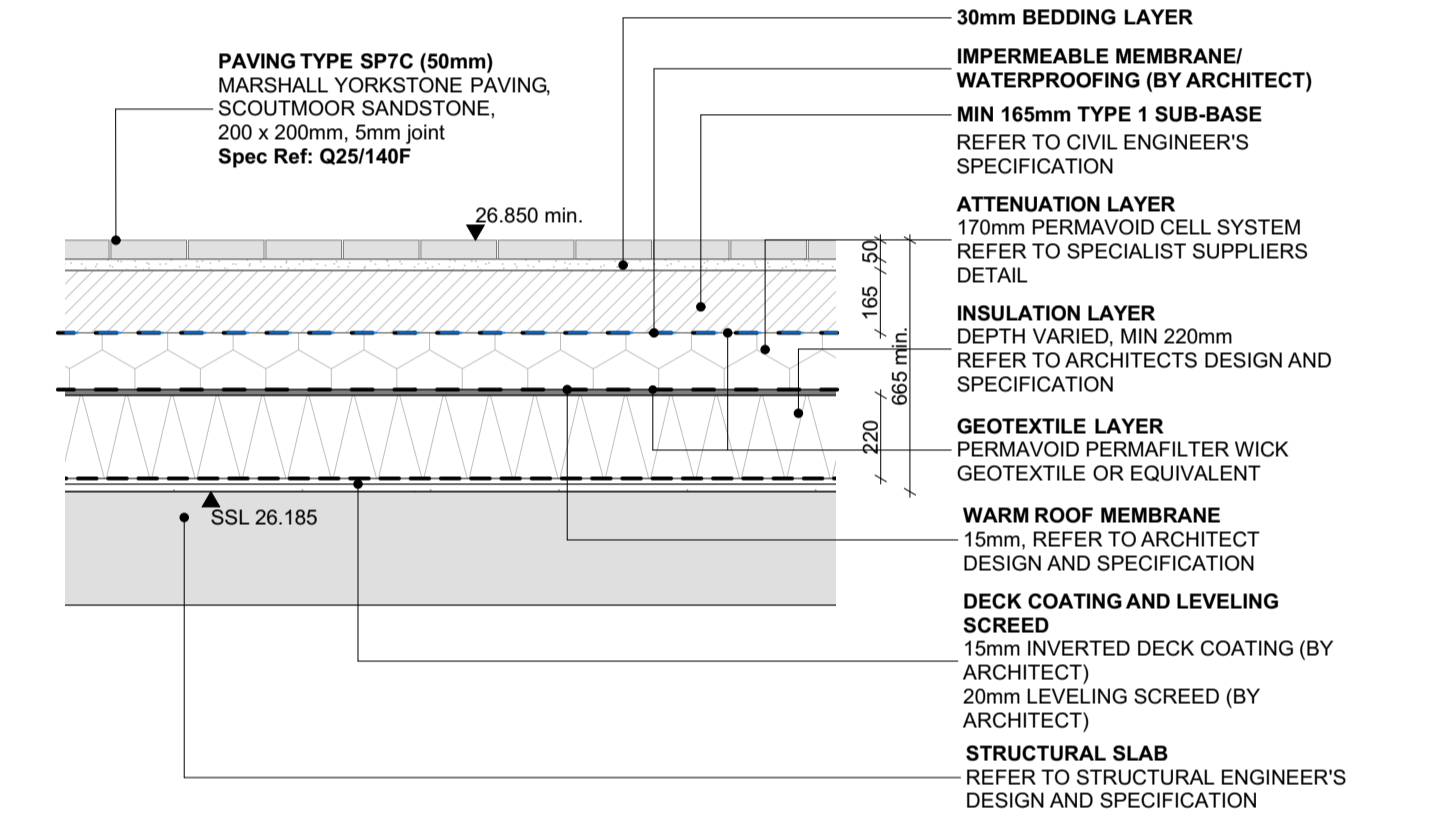
D07 Stone Paving Type SP6D 1:20



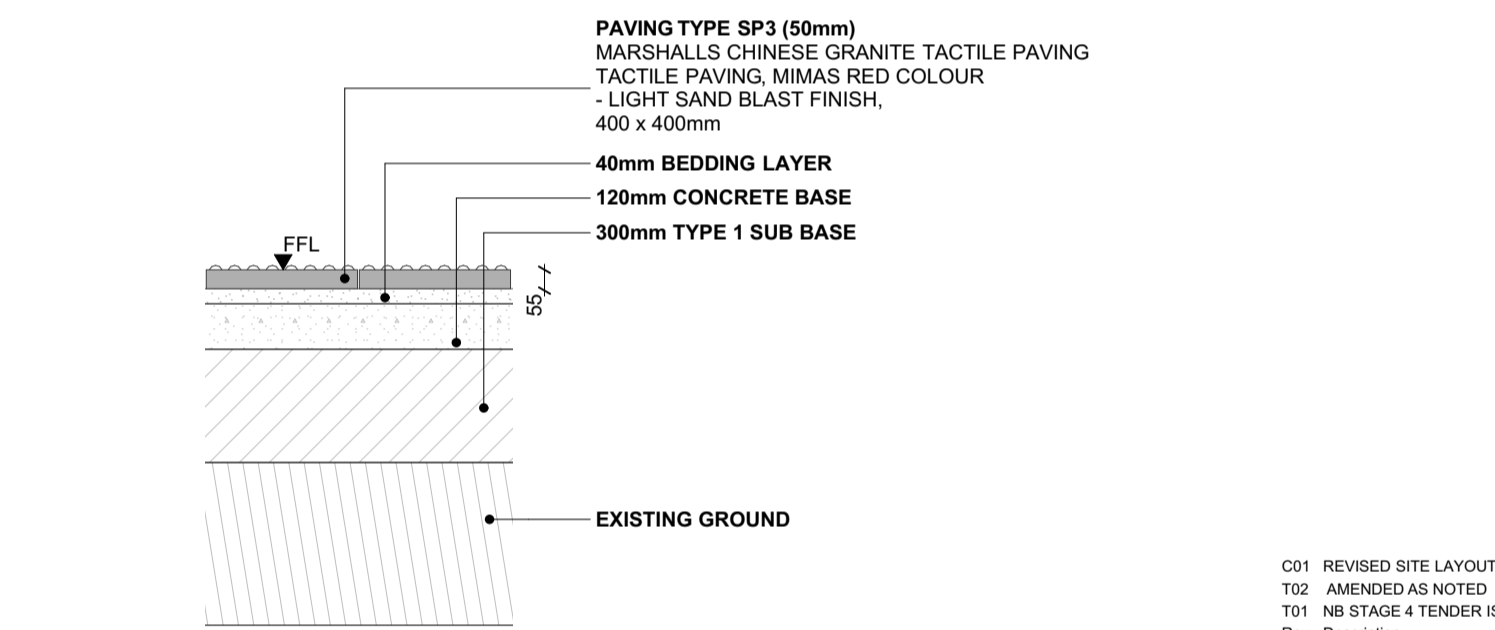
D08 Stone Paving Type SP7A 1:20



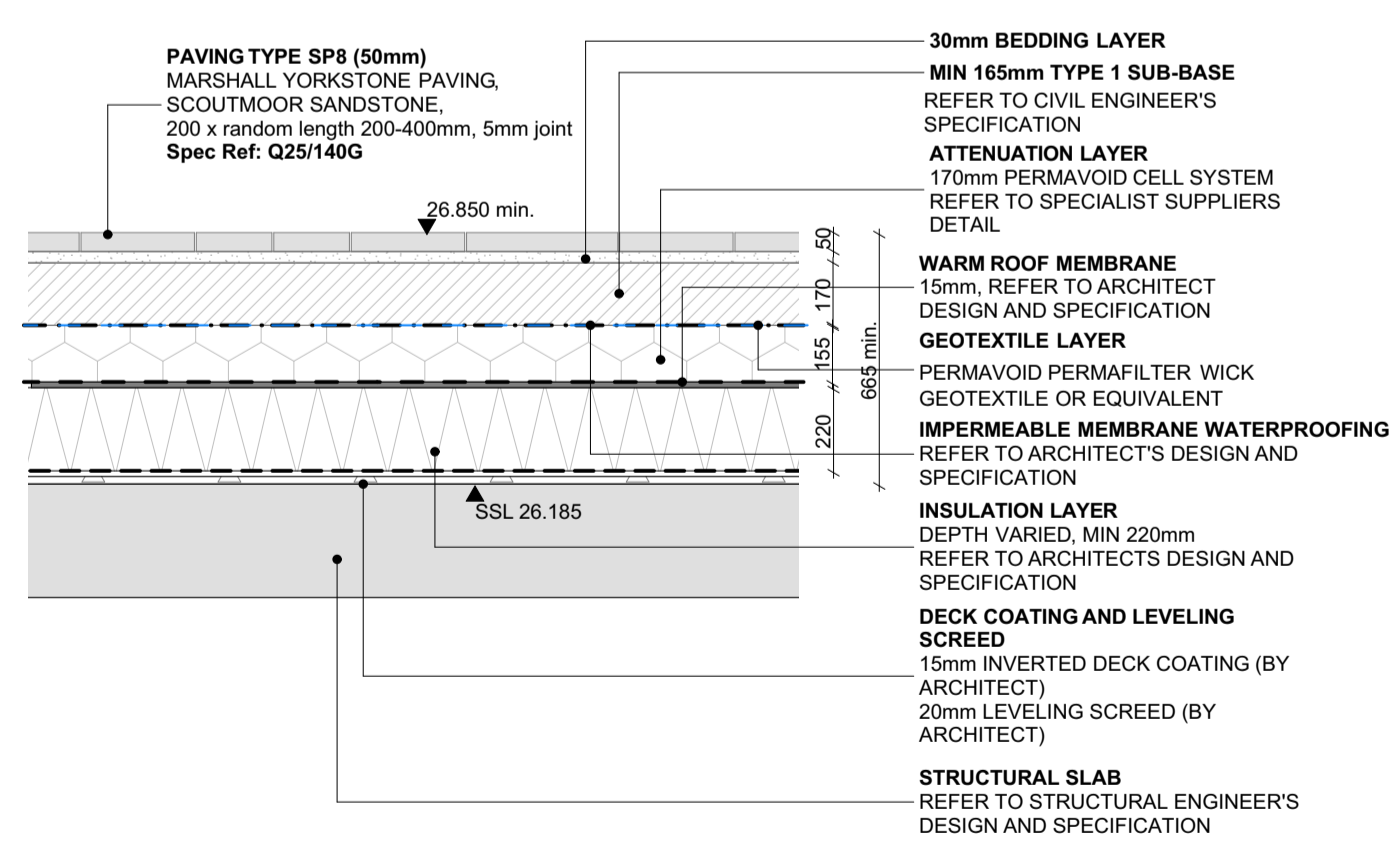
D09 Stone Paving Type SP7B 1:20



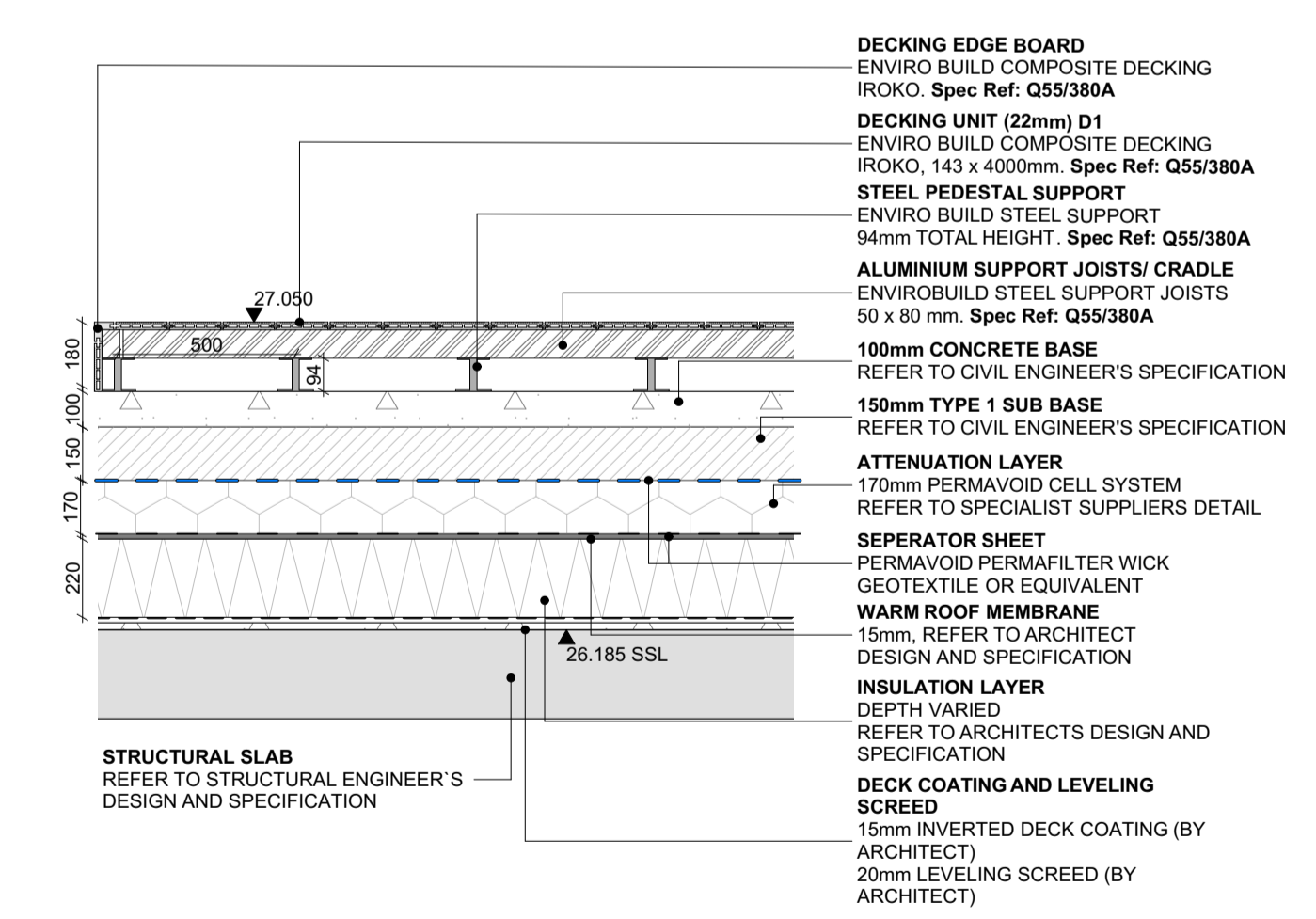
D10 Stone Paving Type SP7C 1:20



D03 Stone Paving Type SP3 1:20



D11 Stone Paving Type SP8 1:20



D12 Decking D1 - Ground Floor 1:20

Rev	Description	Date	By	Chk
C01	REVISED SITE LAYOUT AS CLOUDED	02.08.23	HV	AO
T02	AMENDED AS NOTED	18.03.22	HV	AO
T01	NB STAGE 4 TENDER ISSUE	12.02.21	HV	AO

Revisions				
Project				

BEDFORD PASSAGE DEVELOPMENT

MIDDLESEX ANNEXE LLP

HARD LANDSCAPE DETAILS - SHEET 01

Drawing No.	Revision
BPD-HLM-NB-XX-DR-L-30401	C01

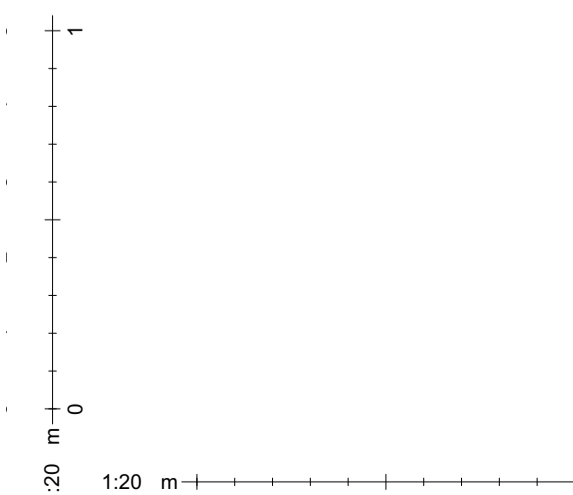
Scale @ A1	Drawn
As Drawing	HV

Date	Checked
12.02.2021	HLM



© HLMArchitects
 2nd Floor
 The Ruskin Building
 Tudor Square
 Sheffield S1 2LA

www.hlmarchitects.com
 T. +44 (0) 114 263 9600
 F. +44 (0) 114 263 9650
 sheffield@hlmarchitects.com



NOTE: TO BE READ WITH BPD-HLM-XX-XX-SP-L-00601
 LANDSCAPE SPECIFICATION FOR PAVING SYSTEMS DETAILS.