

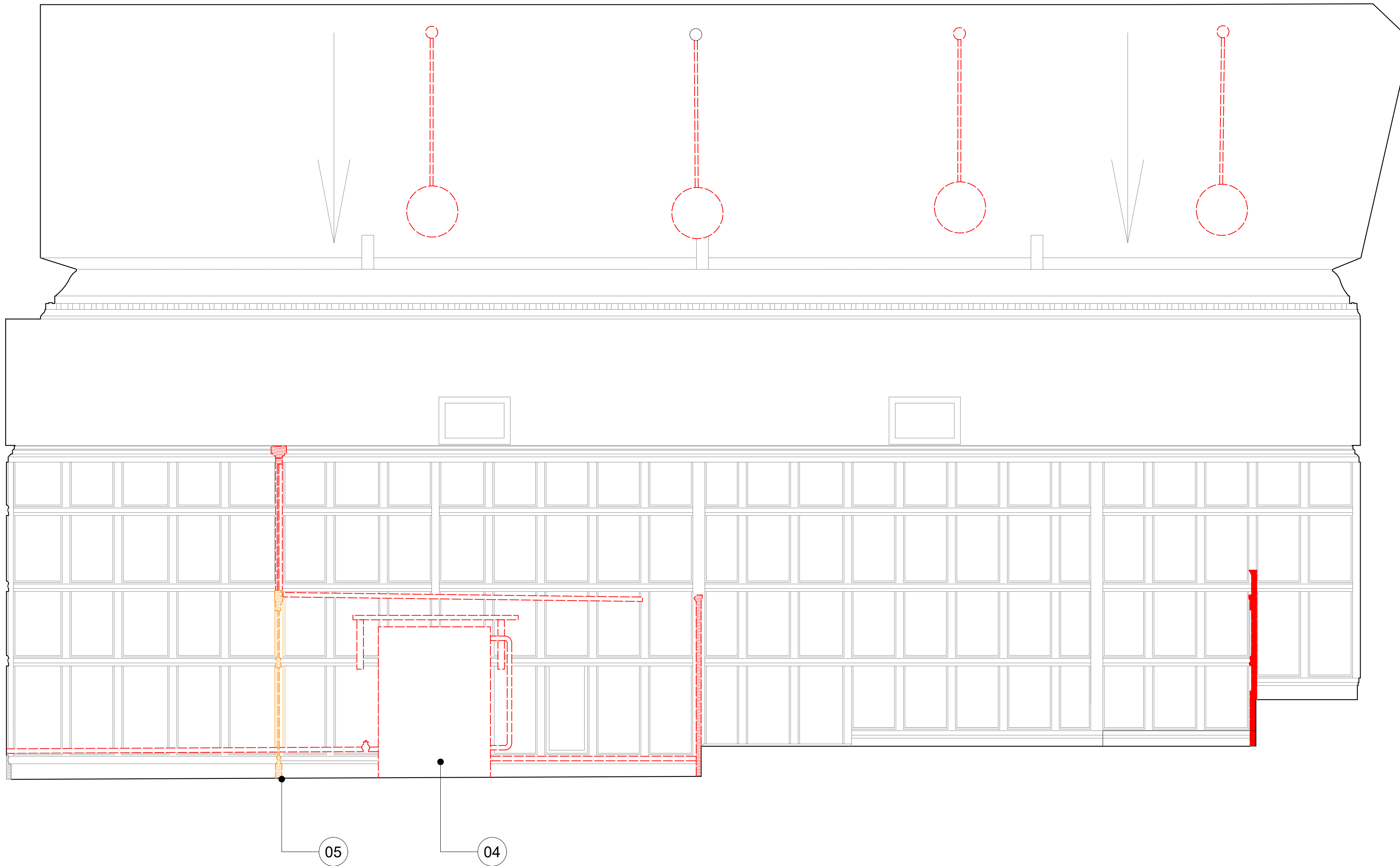
+90.10 AOD  
COUTHUSE FCL

+88.32 AOD  
DATUM

+88.32 AOD  
DATUM

+85.46 AOD  
COURTHOUSE FFL 02

+85.11 AOD  
COURTHOUSE FFL 01



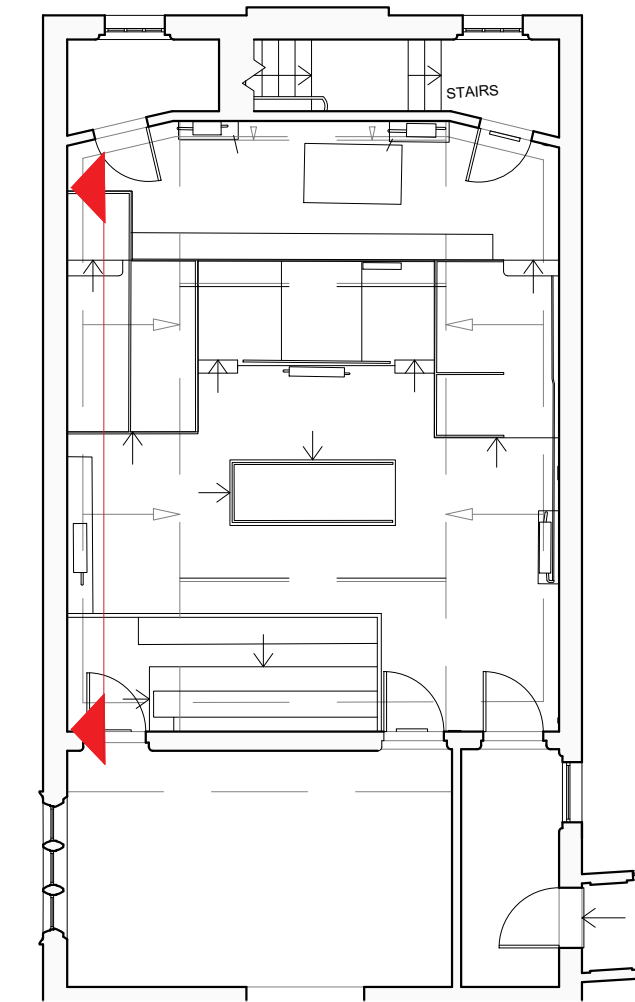
#### LEGEND

1. Wall section to be demolished for new opening, downstand retained
2. Podium metalwork to be removed and re-used in courtyard. Podium to be removed.
3. Existing timber floor retained, made good and re-finished.
4. Radiator joinery and pipes removed
5. Joinery screen removed. Timber screens re-purposed in entrance lobbies where suitable.
6. Worktops removed.
7. Existing door removed and re-hung to suit new court chamber layout.
8. Windows to be replaced with double glazed to match existing.

#### GENERAL NOTE:

All modern ceilings, finishes, fixtures and fittings to be removed.

- Joinery removed and re-used
- Demolition/ removal of joinery
- Joinery surfaces, interior walls, raised floor to be removed
- Modern finishes to be removed.  
Existing fabric to be retained.



**dmfk**

76 Charlotte St., London. W1T 4QS  
t: 0207 435 1144 e: info@dmfk.co.uk w: www.dmfk.co.uk