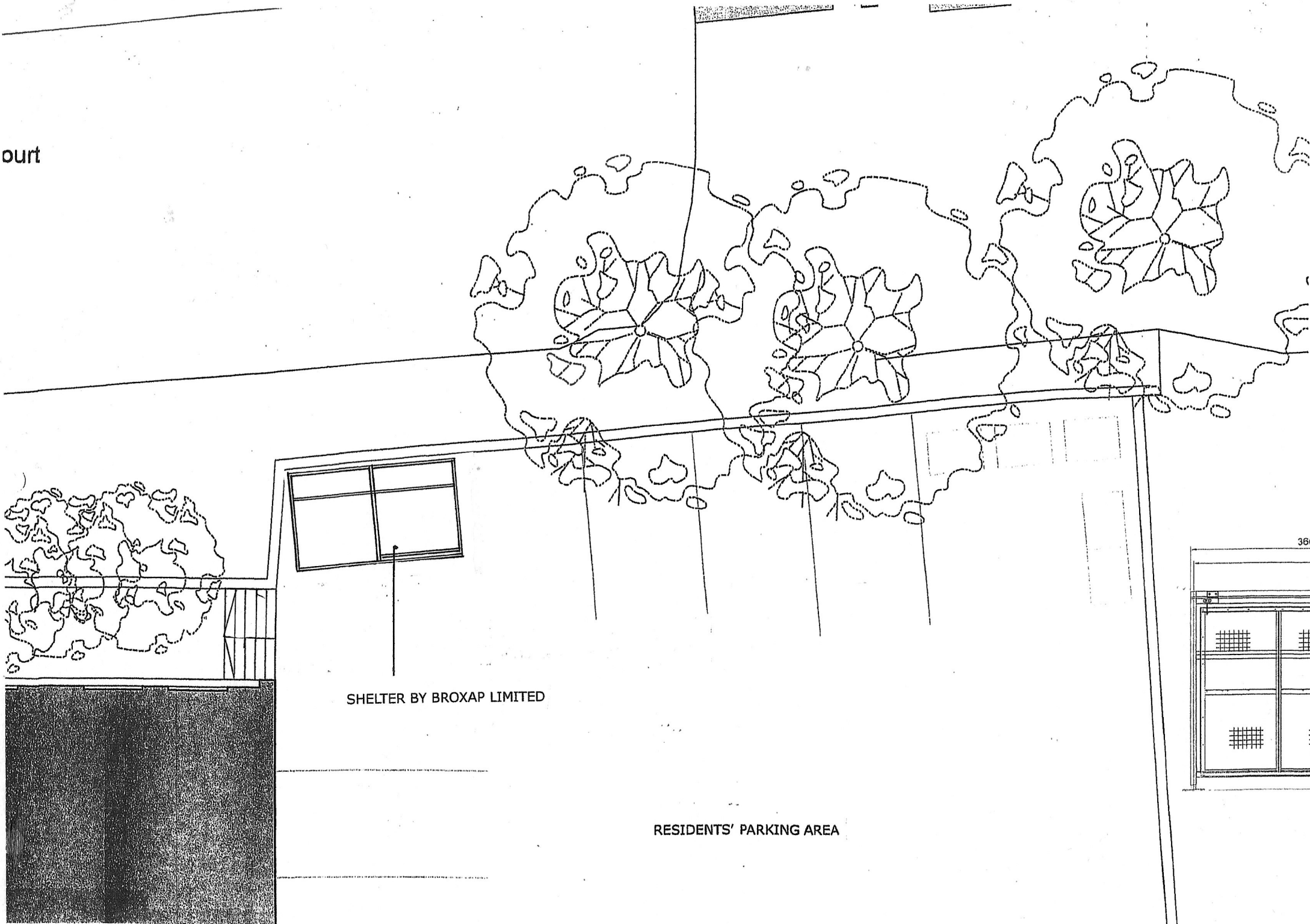


ourt



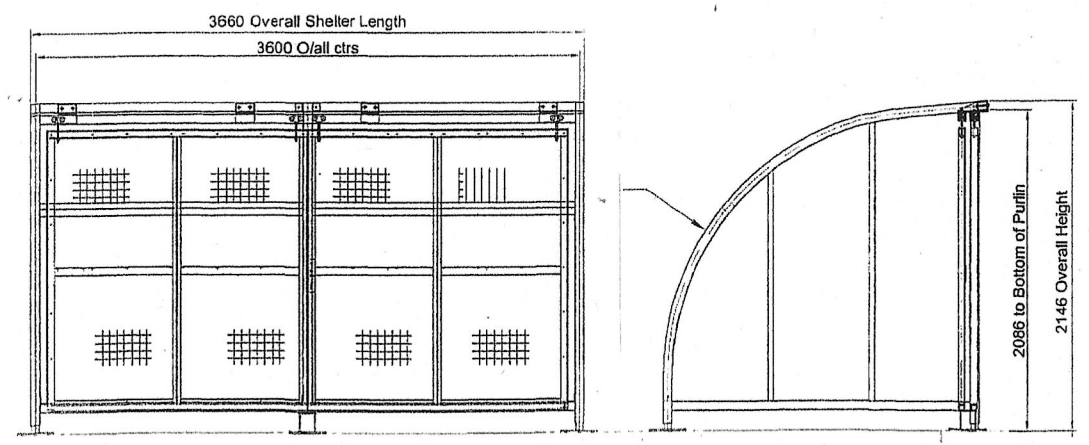
SHELTER BY BROXAP LIMITED

RESIDENTS' PARKING AREA

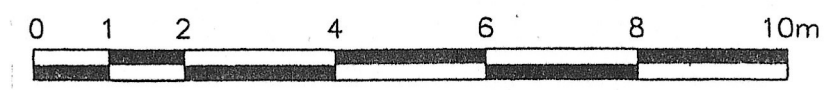
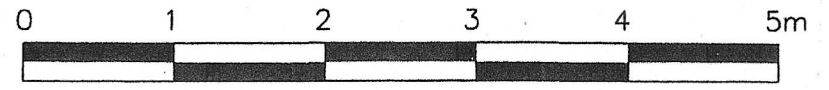
PART GROUND FLOOR PLAN
SHOWING PROPOSED BIKE STORE

NOTES:

- DRAWING TO BE READ IN CONJUNCTION WITH APPROVED GROUND FLOOR PLAN - No. 812/GA01/P2
- 6/8-SPACE CYCLE SHELTER - FROM BROXAP LTD TYPE: WARDALE CYCLE SHELTER REF: BXMW/WAR
- INCORPORATING SHEFFIELD BIKE STANDS
- SOLAR LIGHTING
- DIMENSIONS: 3660 x 2140 x 2146mm
- GALVANISED AND POWDER COATED TO BS 4800 10 A 07 - HOLLY GREEN
- POLYCARBONATE ROOF AND SIDE PANELS
- SLIDING GATE WITH STEEL MESH PANEL AND CODED PADLOCK CODED DEVICE



FRONT & SIDE ELEVATION - 1:50



REVISION A - MARCH 2024
CYCLE SHELTER AMENDED

studio 5 (london) design ltd.

130 Warden Avenue, Harrow, Middlesex, HA2 9LN
T: 07703 552391
E: mail@studio5architects.co.uk

DRAWING PART GROUND FLOOR PLAN
SHOWING PROPOSED BIKE STORE

SCALE 1:100/1:50 @ A3

DATE JAN' 2024

PROJECT MANOR COURT
152 ABBEY ROAD
LONDON
NW6 4ST

PROJECT NO. 24/321

DRAWING NO. DC-01 A