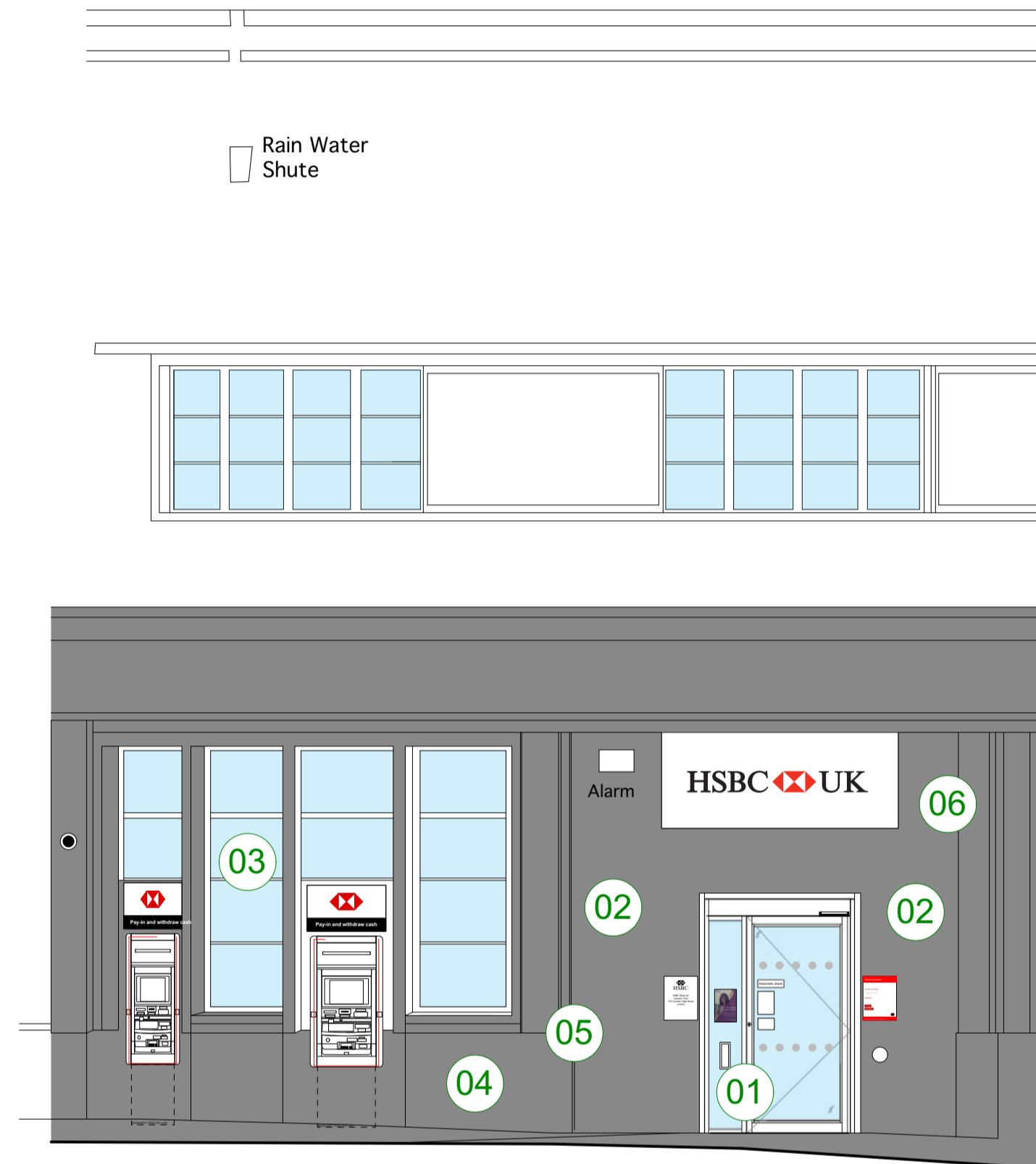


- 01 Remove existing door and sidelight. Fit new door and sidelight to outside edge of wall.
- 02 Remove night safe and fill in recesses either side of existing front door to create flush front wall.
- 03 Re-paint windows (see elevation visuals).
- 04 Remove tiles from external elevation.
- 05 Repair external cill.
- 06 External wall painted black (RAL 9004) at ground floor only. Paint to be matt finish,



WEST ELEVATION



SOUTH ELEVATION



EAST ELEVATION

| REVISION | BY | DATE | REVISION | BY | DATE |
|----------|----|------|----------|----|------|
|          |    |      |          |    |      |

|   |                                |
|---|--------------------------------|
| <b>PUBLIC</b>                           |                                |
| DRAWING: <b>Proposed Elevations</b>     |                                |
| DRAWING No: <b>23 068 PA 31</b>         | SCALE: 1:100 @ A3<br>1:50 @ A1 |
| DRAWN BY / OFFICE: <b>FF/DORCHESTER</b> | REVISION:                      |