



KEY

 **AREA TO BE DEMOLISHED**
12.5 sqm
134.5 sqft

 **NEW BUILD GROUND FLOOR**
15 sqm
161.5 sqft

KEY PLAN 1:1250



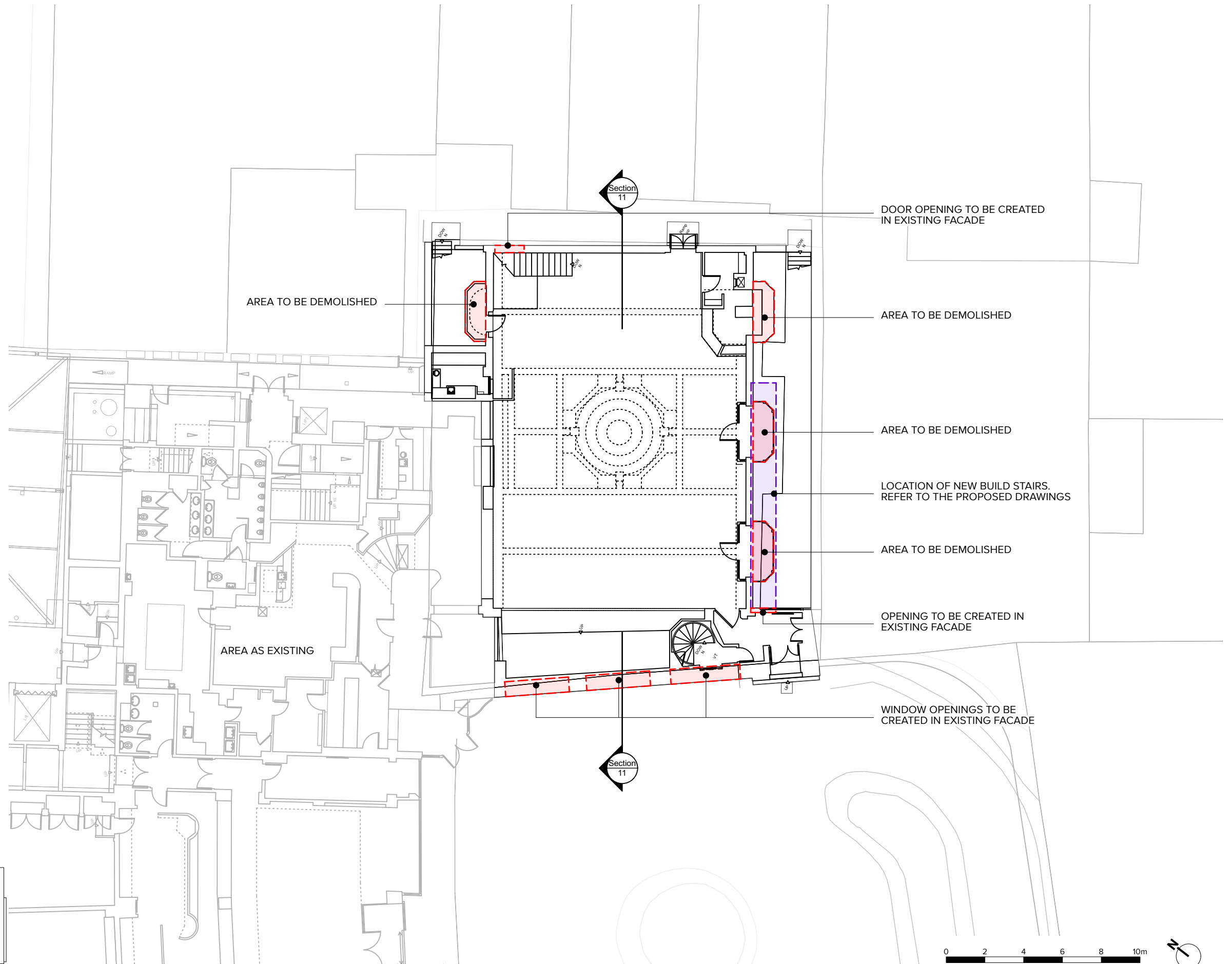
NOTES

NOTE:
SECTION 11: See drawing 1431-P110

SOURCES:

Survey supplied by Maltby Surveys. Original data received on April 2018, with updates in October 2018 and March 2019.

OS Mapping Data obtained from Ordnance Survey. Information License Number 531879_706844



Revisions:	A	THSS	JLS	27/03/23	Initial issue.
	B	MUH	JLS	12/09/23	New-build boundary change Addition of demolition annotations Adjustment to areas key
	C	BWL	JLS	18/09/23	OS base added. Source and Key updated. Annotations updated.
	D	BWL	JLS	22/09/23	Issued for planning.
	E	BWL	JLS	06/02/24	New build and demolition areas updated. Section 11 moved.
	F	BWL	JLS	13/02/24	Area to be demolished updated. Notes updated.
	G	BWL	JLS	23/02/24	Door opening demo annotation added.