

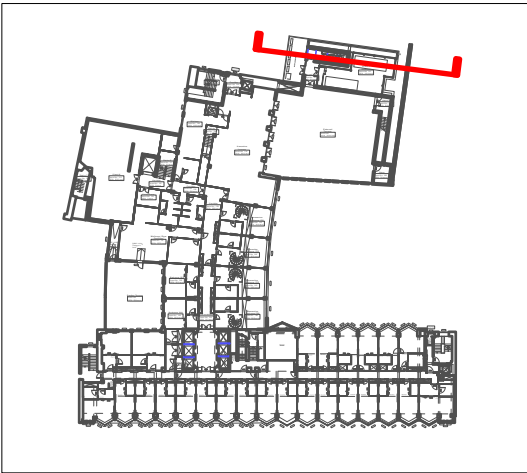


KEY

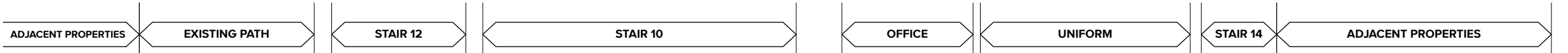
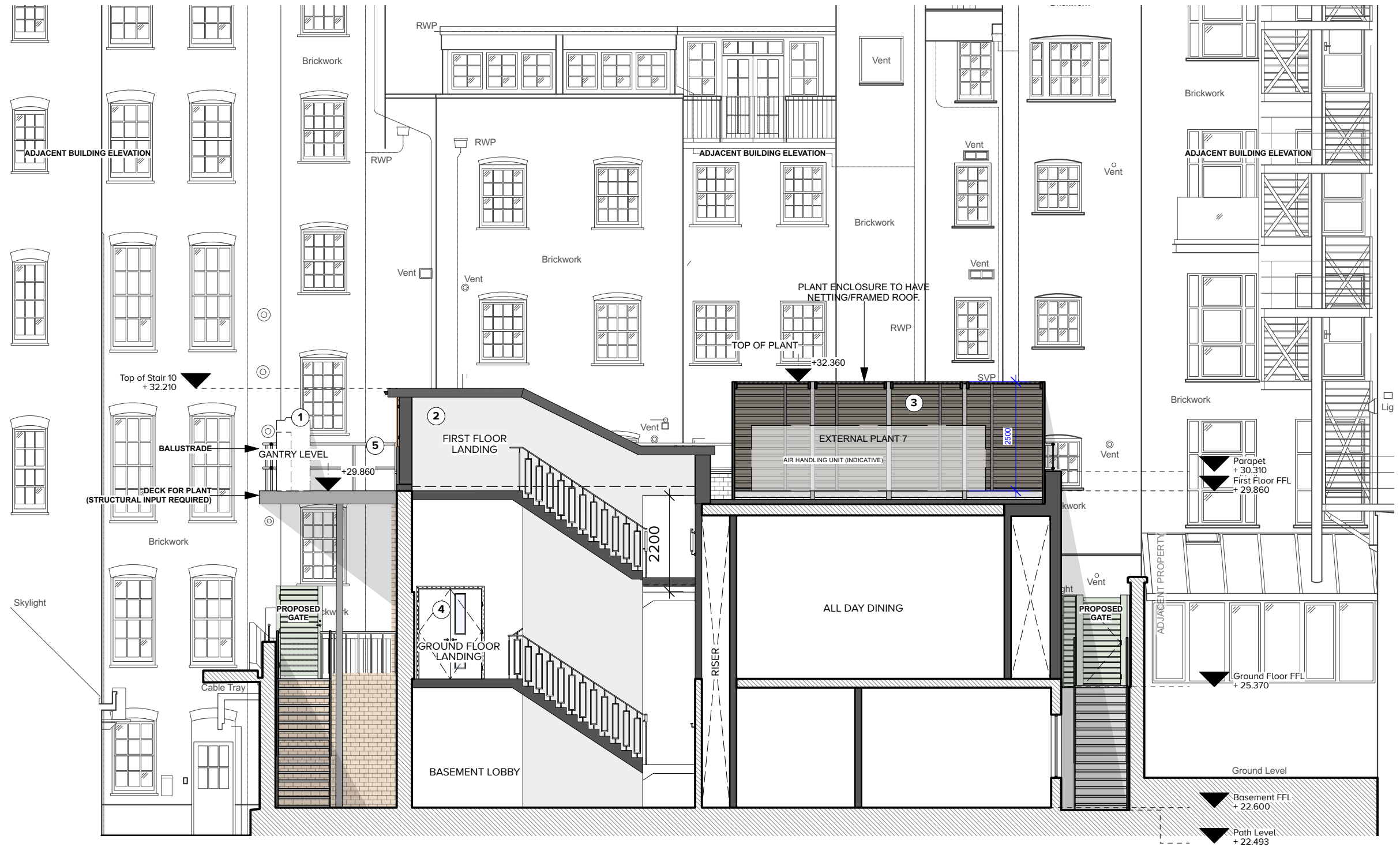
-  EXISTING WALLS / ROOF TO BE KEPT
-  NEW BUILD

KEY PLAN (FIRST FLOOR)



MATERIALS KEY

- ① SERVICES
AC UNITS
- ② POP UP FOR STAIRS
POLYESTER POWDER COATED INSULATED METAL PANNELING, BRONZE COLOURED FIXED VERTICALLY.
- ③ LOUVRES
ALUMINIUM PPC GRILLES TO MATCH THE WINDOWS FRAME. RAL 7048
- ④ DOOR
ALUMINIUM POLYESTER POWDER COATED DOOR WITH VISION PANELS
- ⑤ BALUSTRADE
GALVANISED STEEL RAILING SYSTEM



PROPOSED SECTION AA - 1:100 SCALE

SOURCES:
Section survey supplied by Maltby Surveys.
Original data received on April 2018, with updates in October 2018 and March 2019.
Adjacent properties elevation received from Maltby Surveys on November 2023.



Revisions:	A	BR	JLS	12/02/24	Initial issue.
	B	BR	JLS	14/02/24	Key and annotation amended.
	C	BR	JLS	23/02/24	Stair pop up material amended. Door type changed. Amended key.
	D	VL	JLS	27/02/2024	Room name updated.

scale 1:100 @ A3 date 07/02/2024
drawn BR checked JLS

1431-P125-D