

Material specification document

Application Reference: 2023/1939/P

29 Gilbert Place, WC1A 2JD

1. Brick slip - Smeed Dean London Stock (genuine reclaimed)

Production Plant	Smeed Dean
Production Method	pressed soft mud
Pack Quantity	500
Length x Width x Height	215 x 102.5 x 65 mm
Size Tolerance	T1
Range Tolerance	R1
Gross Dry Density	1380 kg/m ³
Compressive Strength	>=15 N/mm ² (EN 771-1)
Thermal Conductivity	0.510 W/(m·K) (EN 1745:2012: S1)
Durability Designation	F2 (EN 771-1)
Water Absorption	<=22 % (EN 771-1)
Reaction to Fire	A1 class
Active Soluble Salts	S2

Smeed Dean London Stock



Existing brickwork

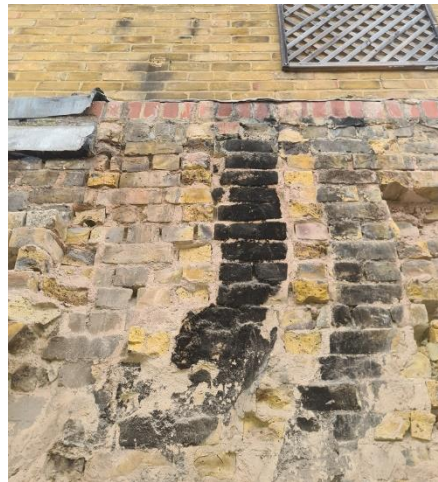


Image above: Exposed chimney breast shows natural brickwork.

The genuine reclaimed deen smeed London stock bricks (shown above) will match existing bricks where the existing bricks were to be cleaned (as is noticeable in the exposed chimney breast image above).

<https://www.wienerberger.co.uk/product-range/bricks/smeed-dean-london-stock.html>

2. Slate - Passaro First Spanish Blue-Grey Slates (400x250mm)

British Standard:	BS 680 Part 2
Appearance:	Blue-Grey slate, flat and even, with a smooth surface and distinctive appearance.
<u>Test results</u>	
SO2 Exposure Test:	Complies S1
Thermal Cycle Test:	Complies T1
Water Absorption:	Complies W1
Contents of Carbonate:	Complies <2%

Slate- Passaro First Spanish Blue-Grey Slates



<https://www.slatescape.co.uk/products/passaro/>

Existing slate



3. Windows - Heritage Sliding Sash Cords & Weights

Species:	Hardwood timber – Dark red meranti	Colour:	Bereco Collection Traffic White Satin
Frame Bottom:	Heritage SS CW 140mm Outer Frame Cill	Glass	Slimline Standard LowE 4/8Kr/4T - Warm Edge Black - back to back spacer - Clear
Frame LR:	Heritage SS CW 140mm Outer Frame Jamb	Profile Trickle Vent:	TV Select Xtra XS16 White & PG16 Grill (x2) White
Frame Top:	Heritage SS CW 140mm Outer Frame Head	Vertical Slider Drive Gear:	Sliding Sash
Sash Bottom Rail:	Heritage SS CW Sash B Rail 66mm	Vertical Slider Catch:	Polished Chrome Lk. Fitch Fastener
Sash Lower Meeting Rail:	Heritage SS CW Sash T Rail (Mtg) Inner 44mm	Travel Restrictor:	Pol Chrome Locking Travel Restrictor Side Fix Key
Sash Sides:	Heritage SS CW Sash Stile 44mm	Hook Lift:	Polished Chrome Hook Lift
Sash Top Rail:	Heritage SS CW Sash T Rail 44mm	Sash Horn:	Belsay - Top
Sash Upper Meeting Rail:	Heritage SS CW Sash B (Mtg) Outer 44mm	Frame Surcharge:	Sliding Sash Box Jamb
Bead:	Heritage SS Bead 4mm	Balance Type:	Required x2
Astragal bar:	16mm Lambs Tongue	Pulley:	Pulley x2

Timber type	Dark Red Meranti
Defects	Defect free laminated timber
FSC	FSC 100% Certified
Warranty	10 years
Maintenance	Clean every 6 months
Density	≥ 450kg/m3



Hardwood

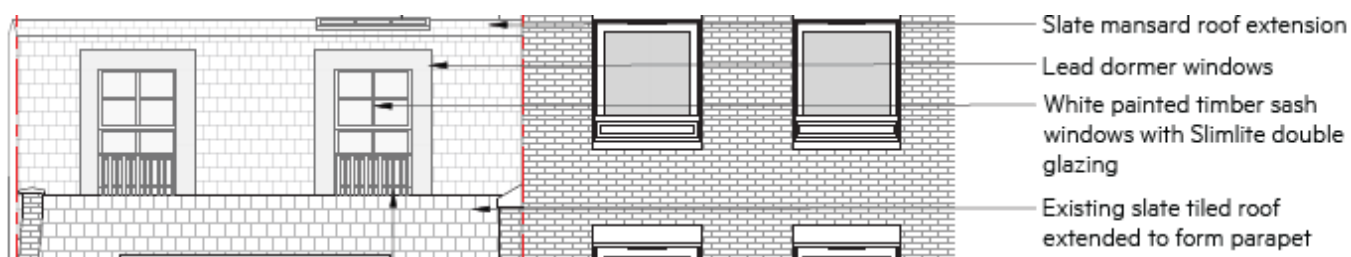
<https://www.bereco.co.uk/timber-windows/sliding-sash-windows>

The materials used for the windows shall be hardwood timber (Dark red meranti), painted traffic white satin.

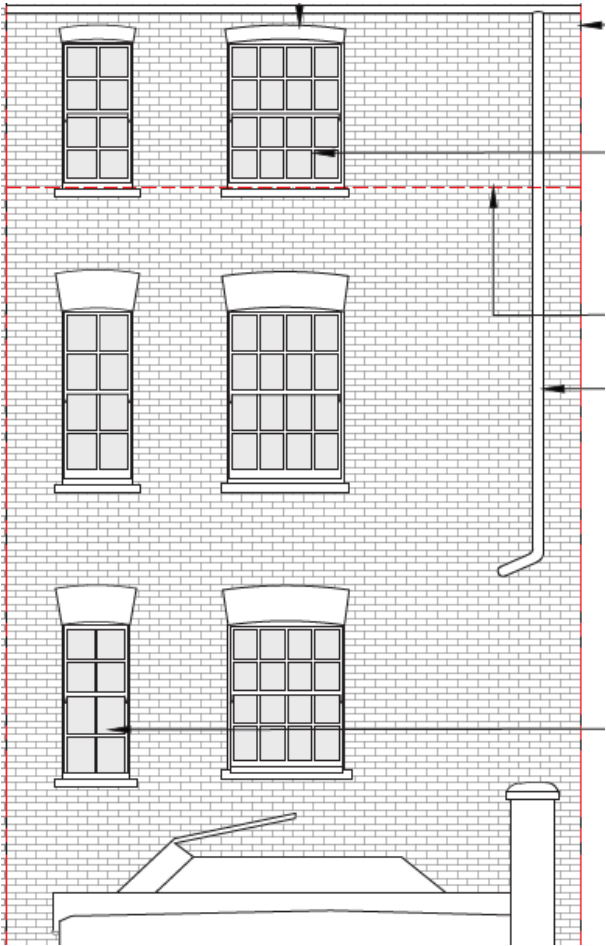
Window installation:

The rear windows will be inset behind the brickwork to match the existing windows on the lower two levels of the house (images below extracted from council approved plans) and the front windows to fit standard dormer style sash windows (using traditional weights that require the width shown).

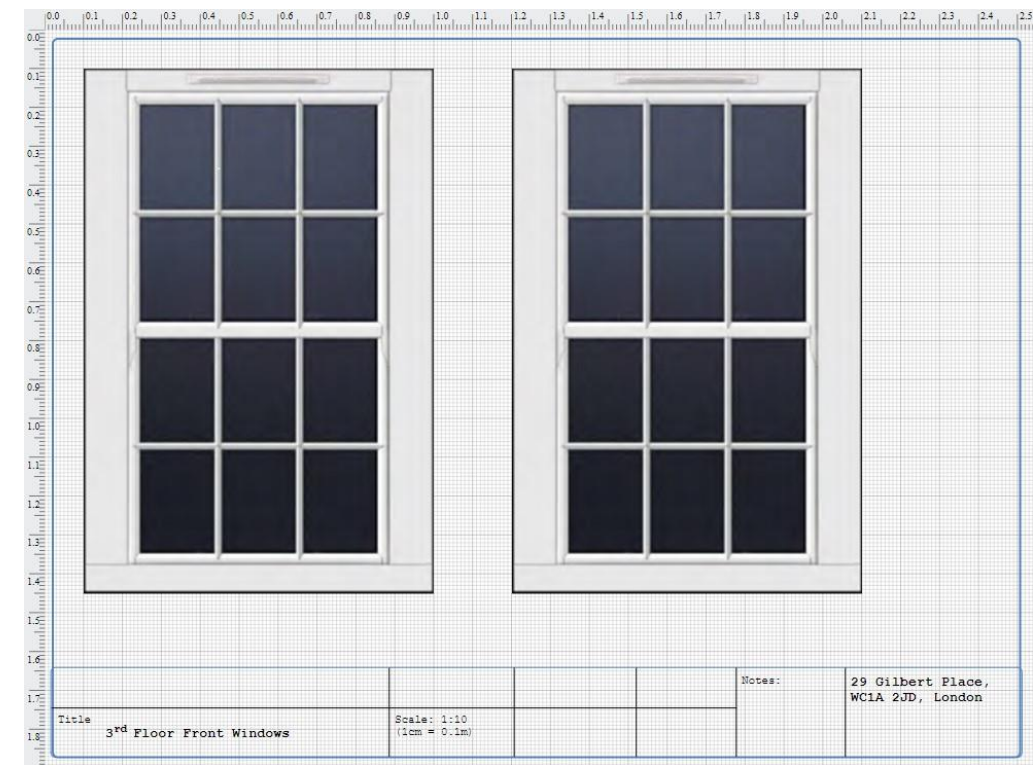
Section drawing below shows the front dormer windows that will be lead dormer windows (as per the approved plan) with lead covering the window frames.



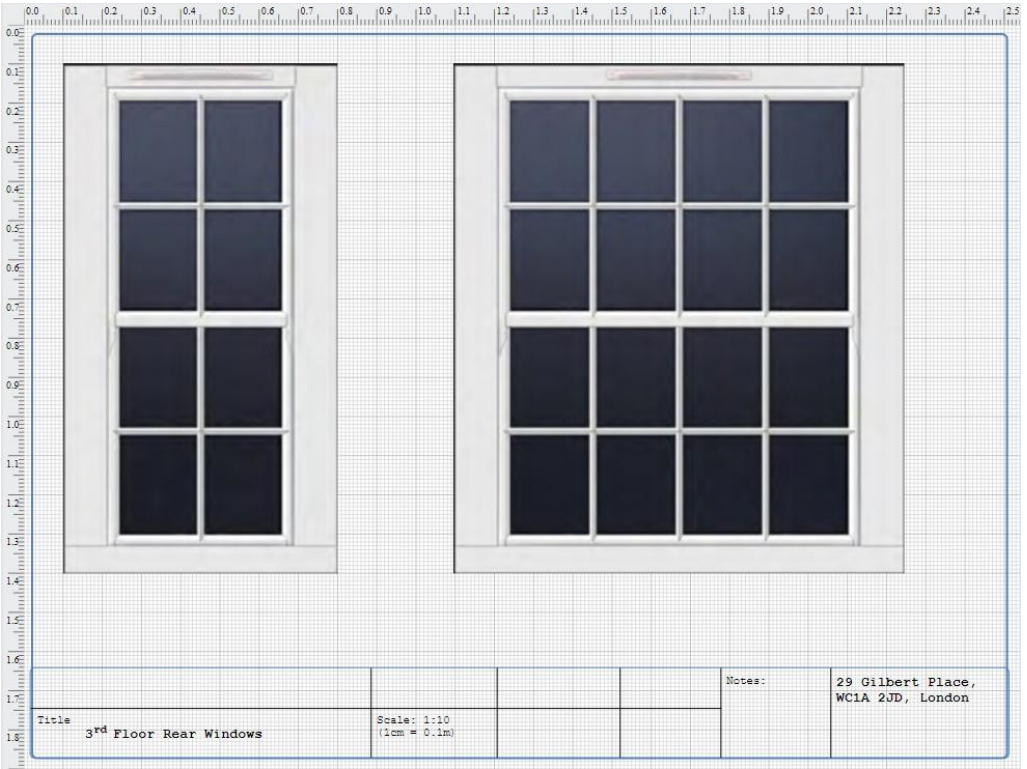
Section drawing below shows the rear window frames will be inset behind brickwork.



Third floor front windows:



Third floor rear windows:



First, Second, Third Floor Side Windows (obscured glass)

