



Plate 1 – Roof to Elevation E2A



Plate 2 – Detail of slate roof to Elevation E2A



Plate 3 – Ridge tile broken and delaminated slates to E2A, nearest E1



Plate 4 – Delaminated and broken slates to elevation E1





Plate 5 – Detail of delaminated / broken slates to elevation E1



Plate 6 – Detail of delaminated / broken slates to Elevation E1 on junction with E3A.





Plate 7 – Detail of delaminated / broken slates to Elevation E3A on junction with E1

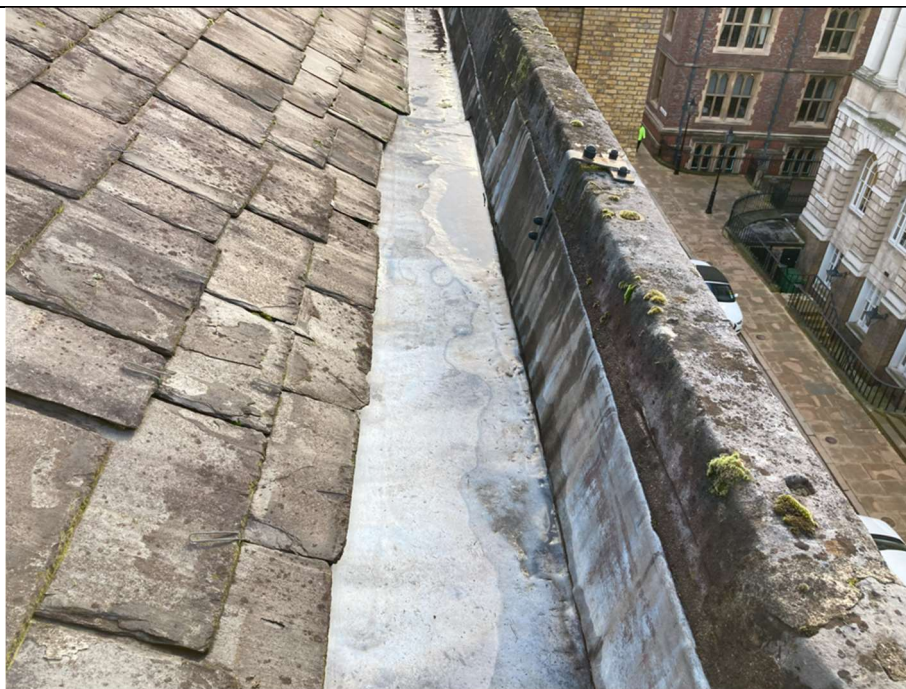


Plate 8 – Slipped / delaminated slates to E3A to gutter.





Plate 9 – Further slate damage to elevation E3A.



Plate 10 – View of the pigeon netting to lightwell nearest to elevation E3A





Plate 11 – Pigeon netting over smaller lightwell nearest Chancery lane elevation (E2A).



Plate 12 – Cracked render surrounding the base of the parapet wall to the lightwell nearest to Chancery lane elevation.





Plate 13 – Asphalt roof area to the central section of the roof area nearest to 10 Stone Buildings.

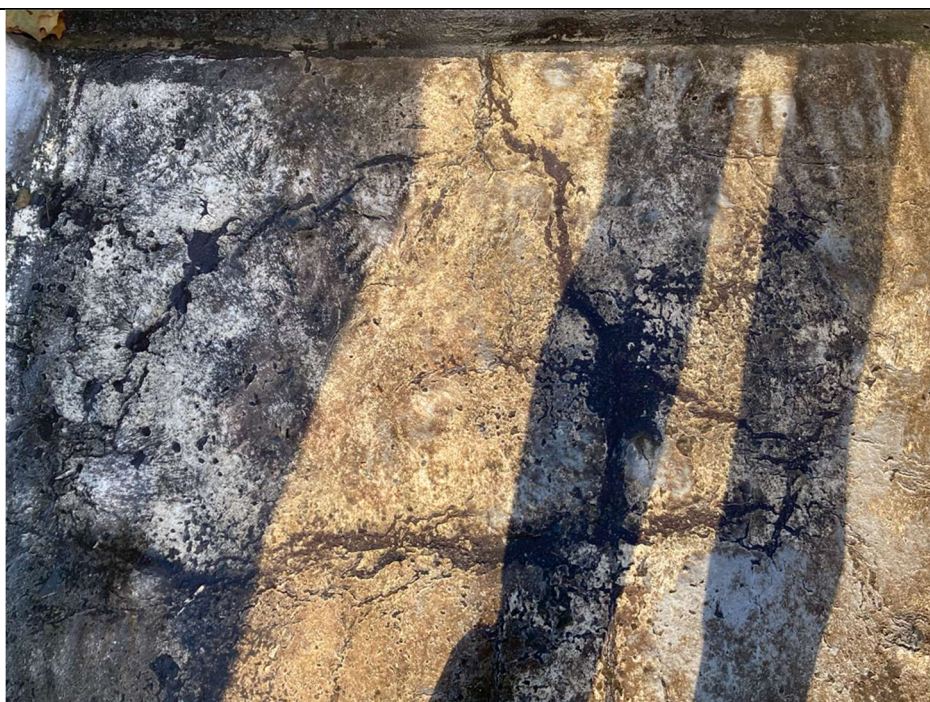


Plate 14 – Failed asphalt covering to the central roof area, showing blisters and splitting to this.





Plate 15 – Inner section of slate-covered roof area surrounding the lightwell nearest to junction of elevations E1 and E3A.



Plate 16 – Inner slate pitched roof area showing inside section of pitched roof to elevation E2A.