

© Anna Williamson ARCHITECTS

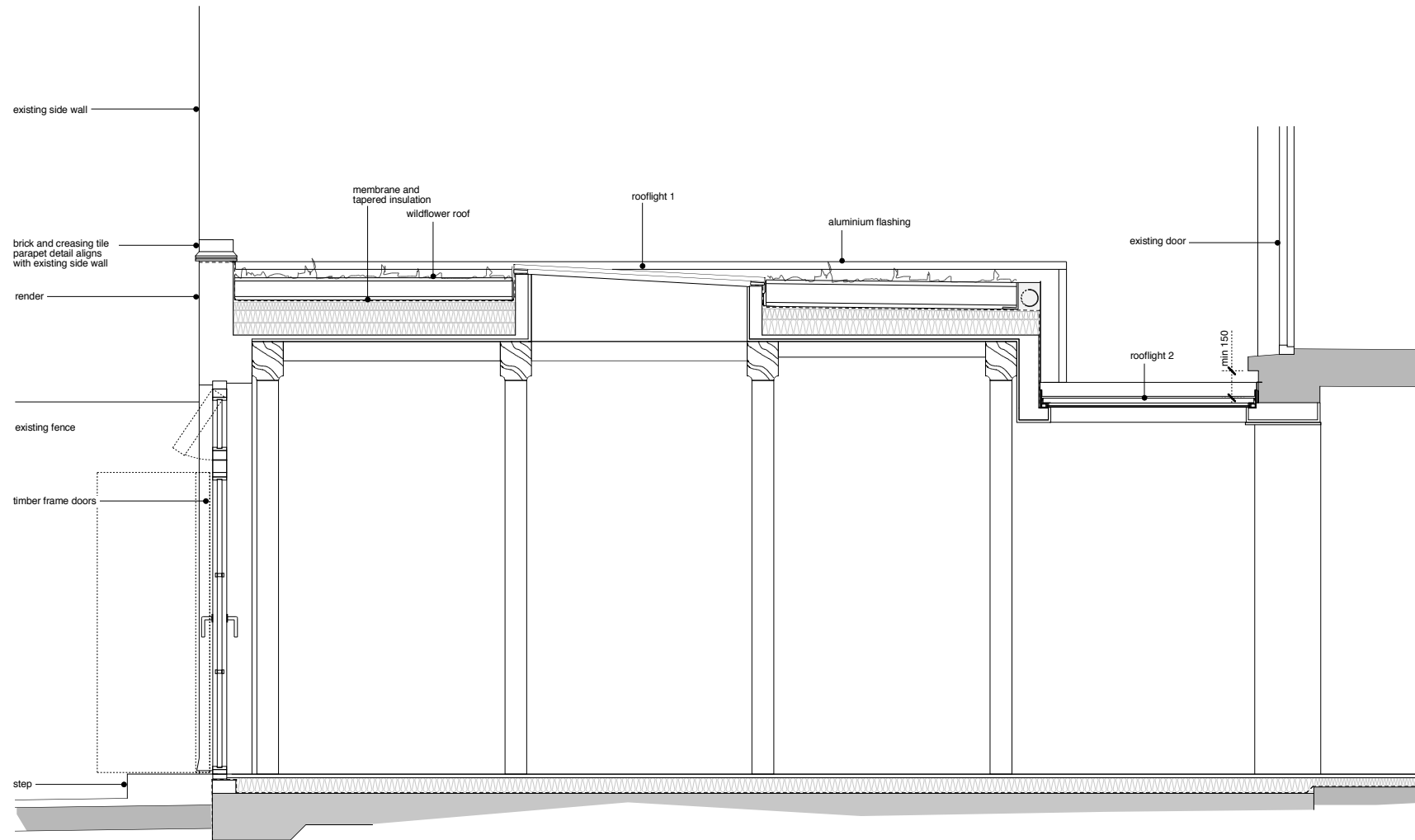
- Do not scale dimensions from this drawing, use figured dimensions only.
- Check all dimensions on site.
- All drawings to be read in conjunction with structural engineer's drawings. Report any discrepancies between drawings to the architect prior to commencing any work.
- Structural elements are indicative only. Refer to structural engineer's design and specification.
- Pay attention to potential hazards identified in the contract documents. These items may not be exhaustive. The contractor's statutory Health and Safety (CDM) obligations apply both on and off site.
- Note the Fire Performance and Environmental Performance strategies, identified in the contract documents

Section location key (lower ground floor)



Read in conjunction with current revisions of general arrangement 101-111

Notes



Section G

Rev	Date	Description

3 St Ann's Gardens

Project 3 St Ann's Gardens
London NW5 4ER

Drawing Number **P204** Revision -

Drawing Title **1:20 Sections
Extension
Green Roof Detail**

Scale 1:20 @ A1, 1:40 @ A3

Date 12 03 2024

Status **Planning Detail**

**P204 issued for planning purposes only
1:20 section showing Radmat MedO green roof construction and materials used**