

# **i196\_24 Endell Street Window Manifestation**

08.03.2024 – Rev. B

# Window Manifestation

## Betterton Street\_proposed Design

**GENERAL NOTES:**

© Buckley Gray Yeoman Limited

All dimensions to be checked on site prior to commencement of any works, and/or preparation of any shop drawings.

Sizes of and dimensions to any structural elements are indicative only. See structural engineers drawings for actual sizes / dimensions.

Sizes of and dimensions to any service elements are indicative only. See service engineers drawings for actual sizes and dimensions.

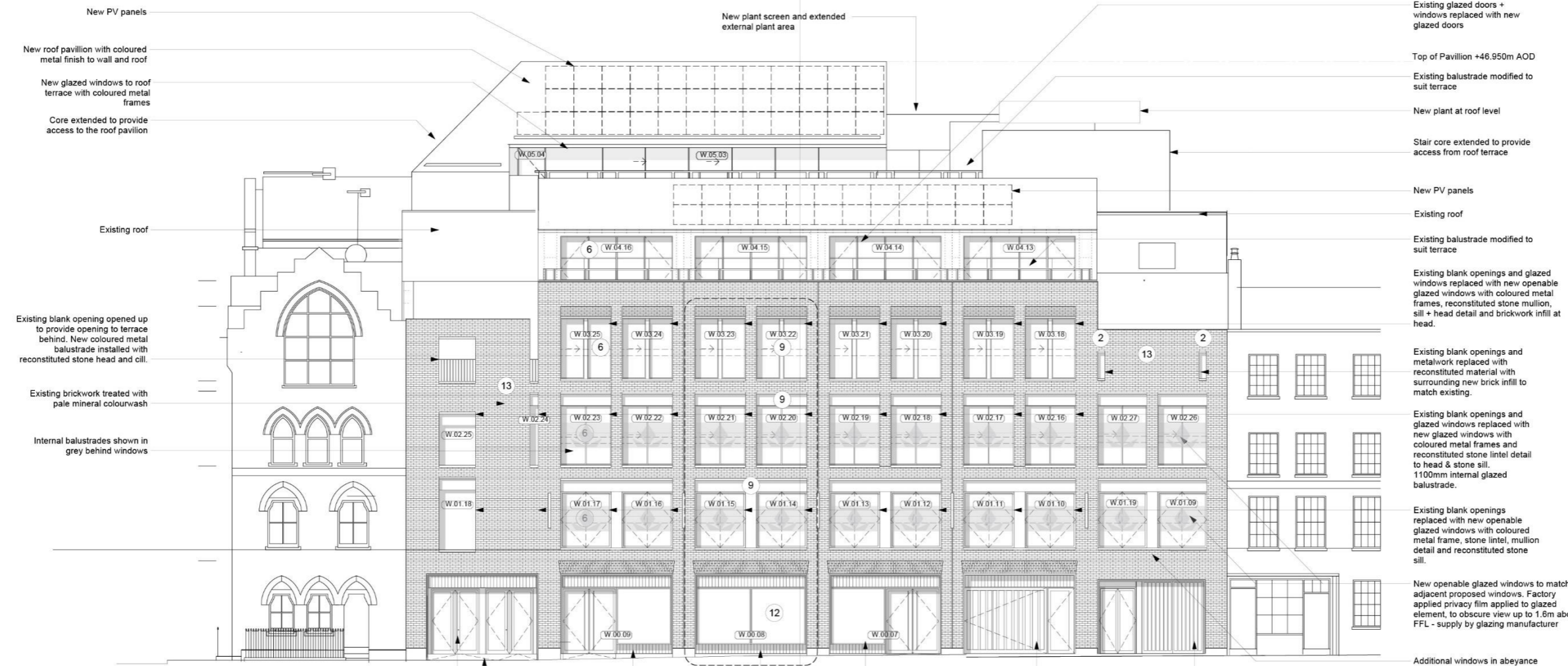
This drawing to be read in conjunction with all other Architect's drawings, specifications and other Consultants' information.

All proprietary systems shown on this drawing are to be installed strictly in accordance with the Manufacturers/Suppliers recommended details.

Any discrepancies between information shown on this drawing and any other contract information or manufacturers/suppliers recommendations is to be brought to the attention of the Architect

DO NOT SCALE FROM THIS DRAWING.

NOTES:



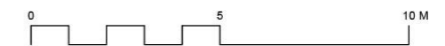
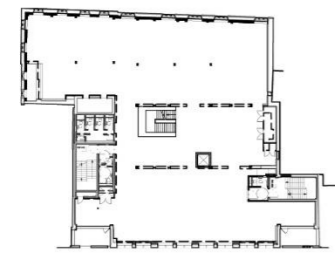
- Material Key**
- 1 Existing brickwork
  - 2 Existing windows with stone surrounds
  - 3 Existing render
  - 4 Existing metal cladding
  - 5 New metal cladding
  - 6 New glazed door/window with metal coloured frame
  - 7 Coloured metal panel
  - 8 Coloured metal gates
  - 9 New reconstituted stone
  - 10 Metal louvered plant screen
  - 11 New glazed rooflights
  - 12 New glazed windows / doors, with new feature coloured metalwork vent panels at high level, and coloured metal surround
  - 13 Existing brickwork treated with pale mineral colourwash

PL04 16/12/22	Non Material Amendments	LH
REV. DATE	NOTE	DRAWN

**BGY**  
BUCKLEY GRAY YEOMAN  
+ 44 20 7033 9913  
BGY.CO.UK

CLIENT	
<b>PATRIZIA</b>	
PROJECT	
<b>24 Endell Street</b>	
DRAWING	
<b>Proposed South Elevation Betterton Street</b>	
SCALE	DATE
<b>1:100 @ A1 (1:200 @ A3)</b>	<b>Oct. 2021</b>
STATUS	APPROVED
<b>PLANNING</b>	<b>CS</b>
DWG No.	REVISION
<b>1183-PL-GE-02</b>	<b>PL05</b>

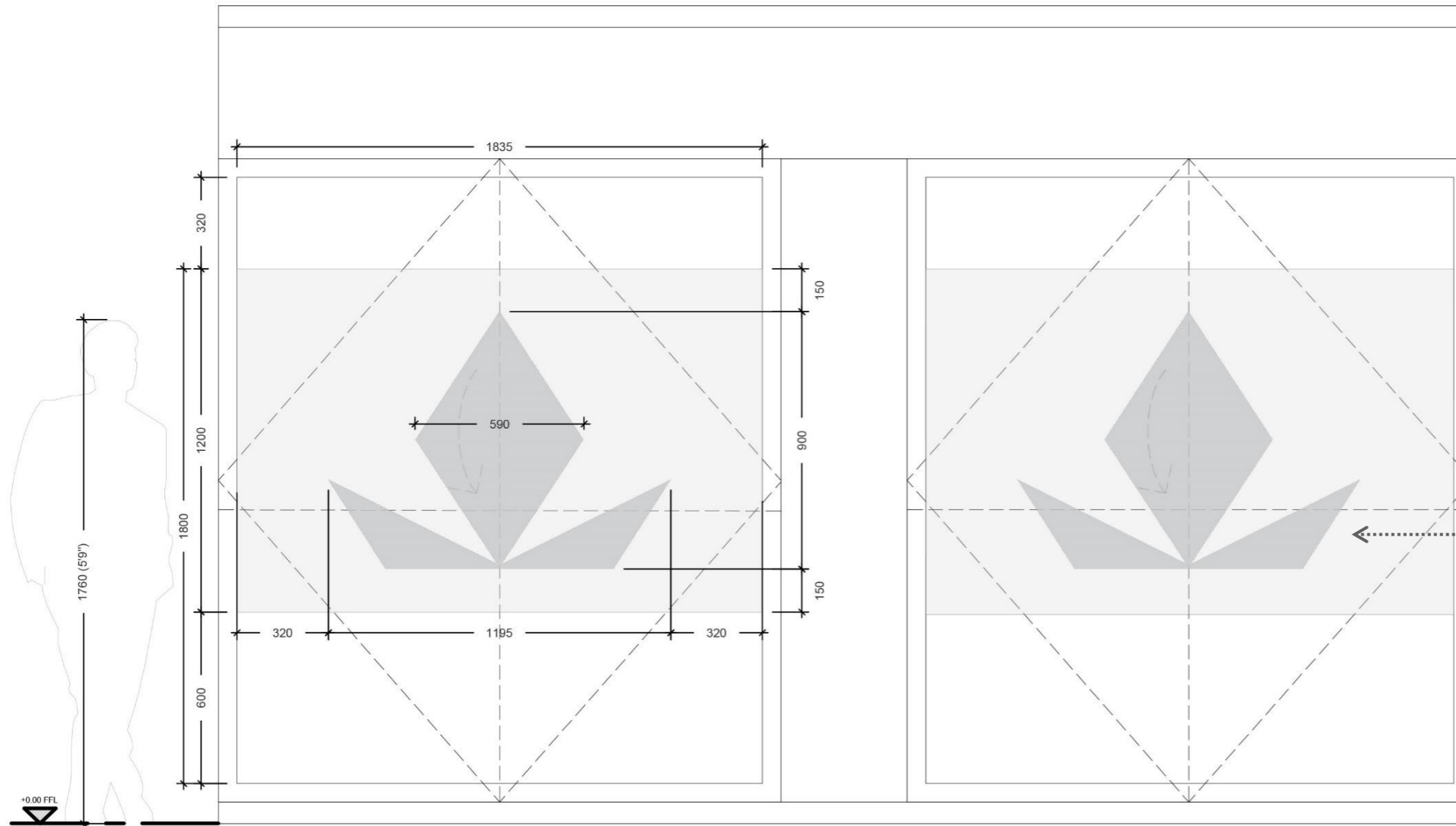
**Proposed South Elevation**  
Scale: 1:100



# Window Manifestation

Betterton Street\_proposed Design

SCALE 1:20 @ A3



## Transparency

Note: this is an example of the manifestation is applied to the interiors. The same effect and transparency is intended to be applied to external windows.



1 **GLAZING ELEVATION WITH MANIFESTATION**  
SCALE 1:20 @A3

**DRAWING NOTES:**  
 All dimensions to be checked on site prior to commencement of any works, and/or preparation of any shop drawings.  
 Sizes of and dimensions to any structural elements are indicative only. See structural engineers drawings for actual sizes/dimensions.  
 Sizes of and dimensions to any service elements are indicative only. See service engineers drawings for actual sizes and dimensions.  
 This drawing to be read in conjunction with all other Architect's drawings, specifications and other Consultants' information.  
 All proprietary systems shown on this drawing are to be installed strictly in accordance with the Manufacturers/Suppliers recommended details.  
 Any discrepancies between information shown on this drawing and any other contract information or manufacturers/suppliers recommendations is to be brought to the attention of the Architect.  
 DO NOT SCALE FROM THIS DRAWING.

PL B	08.03.24
PL A	19.01.24
PL -	11.01.24
STATUS	REVISION
	DATE

DRAWING <b>MANIFESTATION DETAIL</b>	
<b>ELEVATION</b>	
SCALE 1:20 @ A3	DRAWN BY <b>SR</b>
DATE <b>MAR /24</b>	CHECKED BY <b>TS</b>
DWG No. <b>i196_ID-D-001-ELE-01</b>	REVISION <b>B</b>
DRAWING STATUS <b>PLANNING</b>	

**BGY**  
 BUCKLEY GRAY YEOMAN  
 + 44 20 7033 9913  
 BGY.CO.UK

CLIENT **PATRIZIA**

PROJECT **24 Endell Street**

**THANK YOU**