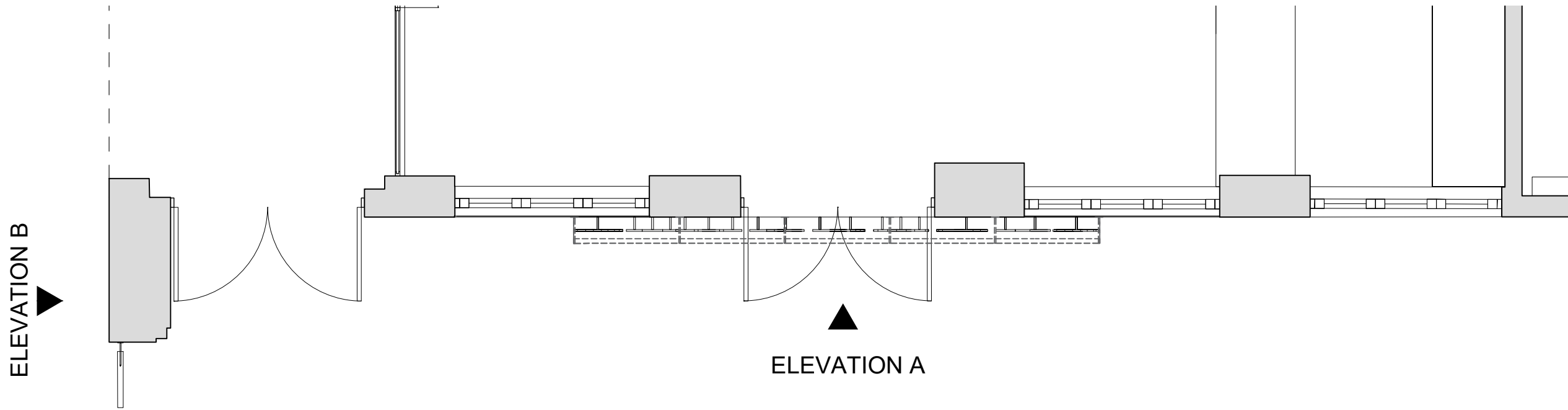
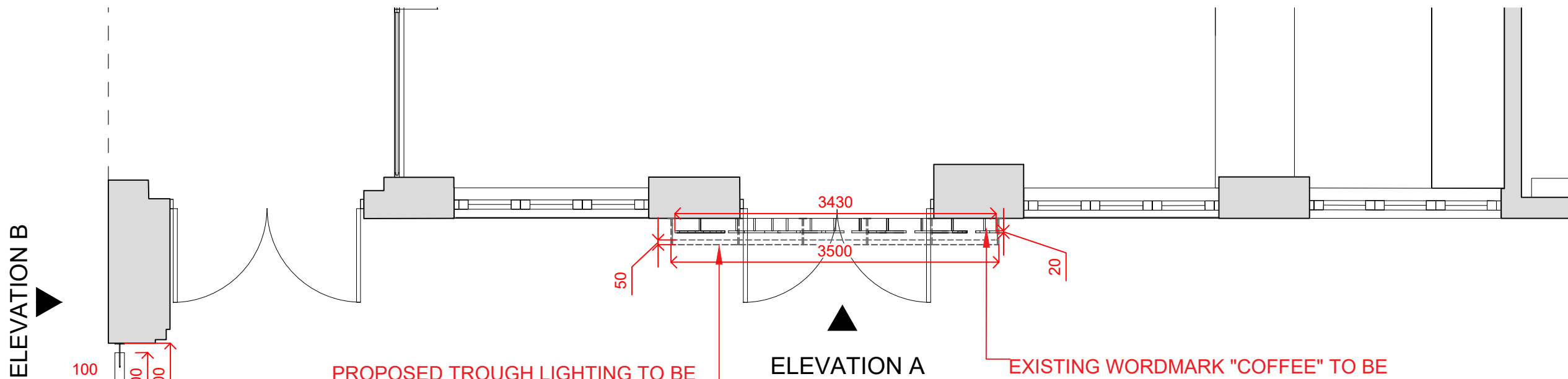


Revision	Date	By	Chk.
--	01.02.24	ZE	PT



01 EXISTING GROUND FLOOR PLAN  
1:25@A1 / 1:50@A3

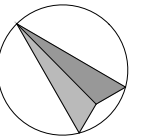
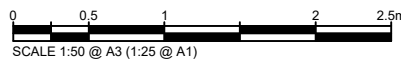




PROPOSED TROUGH LIGHTING TO BE PLACED ABOVE THE NEW "STARBUCKS" LETTERING AND PAINTED IN BLACK RAL 9005

EXISTING WORDMARK "COFFEE" TO BE DEMOLISHED. "STARBUCKS" WORDMARK TO BE RETAINED, CENTRALISED AND PAINTED IN MATT BLACK WITH LOCATORS TO REAR

NEW NON-ILLUMINATED PROJECTING SIGN WITH ALUMINIUM ROLLED CARCASS PAINTED MATT BLACK RAL 9005. NON-ILLUMINATED FACES TO BE IN WHITE/GREEN. BRACKET WORK FROM 50MM BOX SECTION COMPLETE WITH FIXING PLATE AND PAINTED IN RAL 9005 BLACK SATIN

02 PROPOSED GROUND FLOOR PLAN  
1:25@A1 / 1:50@A3



Status	PLANNING		
Client			
Starbucks Project Number	49777-061	Store Number	12968
Architect			
Project Title	LYNTON HOUSE, TAVISTOCK SQUARE WC1H 9LT		
Drawing Title	EXISTING & PROPOSED FLOOR PLAN		
Project Number	169-SB	Drawing Number	101
Revision	--		
Drawn	ZE	Checked	PT
Scale	AS SHOWN@A3	Date	01.02.2024
The content of this drawing is the property of RPM Consult and may not be copied in whole or part without formal consent.			