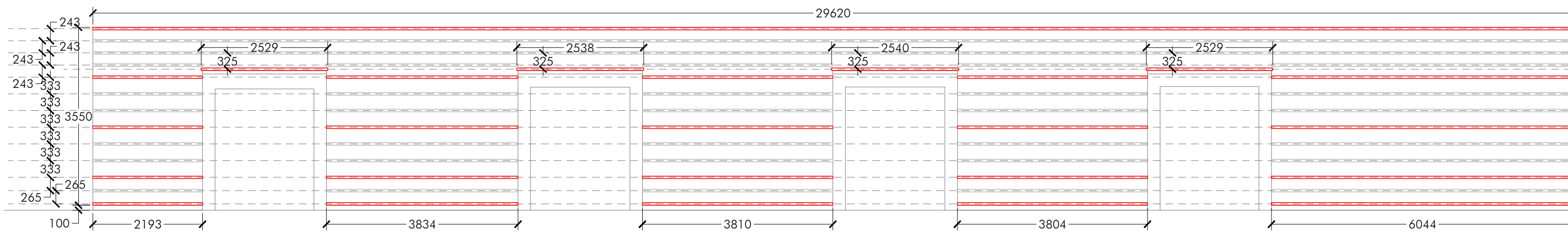






LIVING WALL 1 - SCALE 1:75

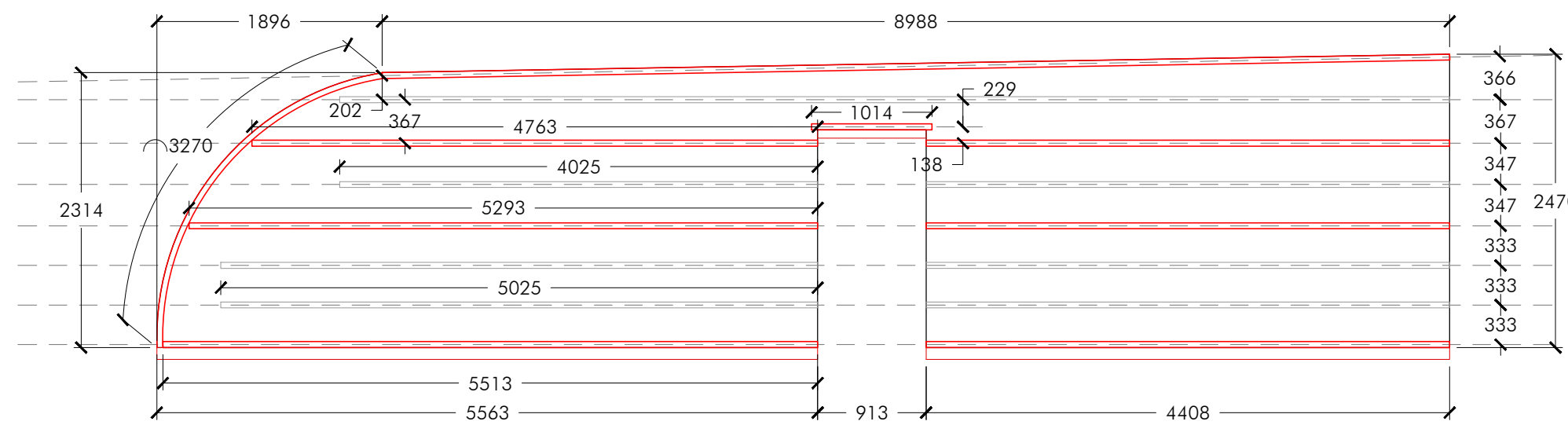


LIVING WALL - FRAMEWORK

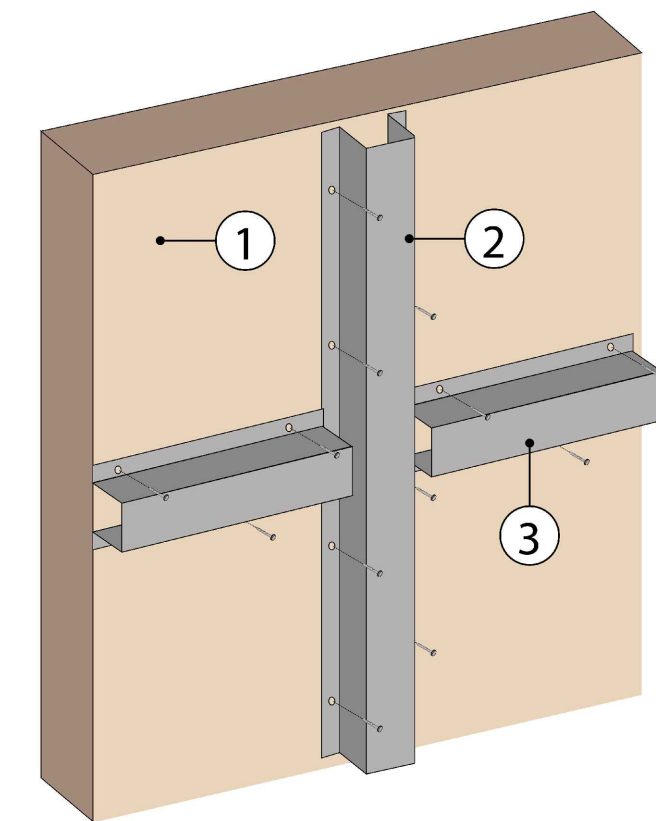
AUXILIARY SUBSTRUCTURE FORMED BY GALVANIZED STEEL PROFILES, e=1,2 mm MINIMUM FIXED TO THE STRUCTURE MOUNT WITH ENOUGH RESISTANCE FOR THE LOADS, USING GALVANIZED STEEL HEX HEAD SELF-TAPPING SCREWS (OR METAL WELDING) WITH ENOUGH RESISTANCE (30-35 kg/ud)

-  ZINC PLATED HEX HEAD SCREW TO FIX UPPER PROFILE TO THE AUXILIARY SUBSTRUCTURE
-  GALVANIZED STEEL PROFILE TOP HAT 50 mm TO SUPPORT THE FYTOTEXTILE MODULES WITH A MAXIMUM WORKLOAD OF 50-55 KG/M2
-  DRILLS DIAMETER 20 mm + DIAMETER 6 mm IN THE OPPOSITE FACE EACH METER TO FIX SCREW CLAMP TO WALL SUPPORT.
-  GALVANIZED SCREWS WITH CAVITY PLUG OF 6mm FOR FIXING SUBSTRUCTURE TO CONCRETE WALL IN THE POINTS INDICATED

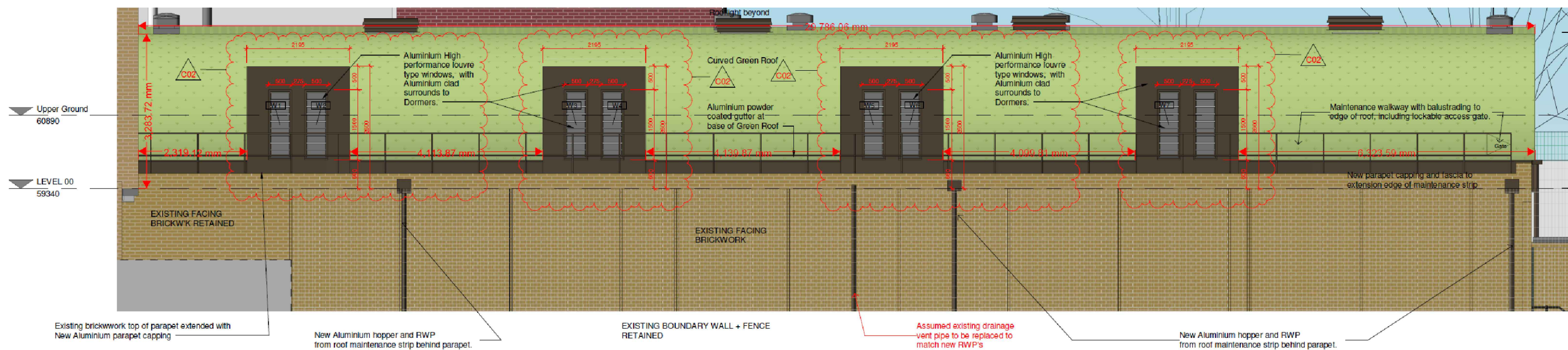
LIVING WALL 2 - SCALE 1:50





STRUCTURE ELEMENTS AND ASSEMBLY SCHEME



1. Support wall
2. Vertical Steel Top hat profile 50x50x1,5 mm
3. Horizontal Steel Top hat profile 50x50x1,5 mm



CONSULTOR  INSTALLER 	PROJECT HALL SCHOOL - SCOTSCAPE		
	DRAWING AUXILIARY STRUCTURE		
CODE INT 24007	DRAWING NUMBER 02.01	V3	06-03-2024 S-A3 1:75