

EW.01

Exterior Window 1135x2400mm
Full Height Window, Tilt&Turn Window to the Top, Fixed Glass Panel to the Bottom

Detail Reference: TBC

*Window opening directions may differ, refer to elevation drawing for direction of opening.

EW.2a

Exterior Window 910x2400mm
Full Height Window, Tilt&Turn Window to the Top, Fixed Glass Panel to the Bottom

Detail Reference: TBC

*Window opening directions may differ, refer to elevation drawing for direction of opening.

EW.2b

Exterior Window 910x2400mm
Full Height Window, Tilt&Turn Window to the Top, Fixed Glass Panel to the Bottom

Detail Reference: TBC

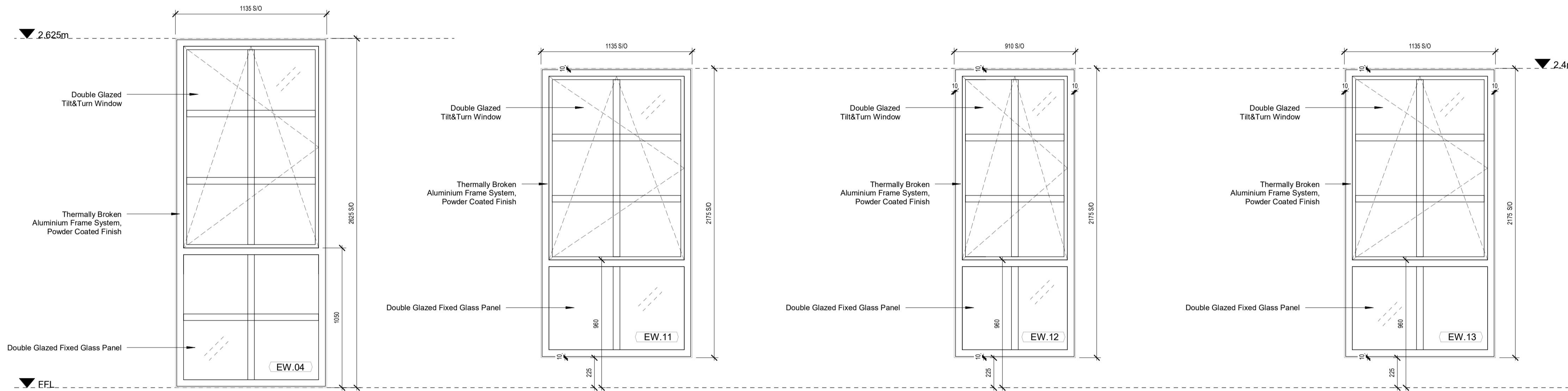
*Window opening directions may differ, refer to elevation drawing for direction of opening.

EW.03

Exterior Window 1350x2400mm
Full Height Window, Tilt&Turn Window to the Top, Fixed Glass Panel to the Bottom

Detail Reference: TBC

*Window opening directions may differ, refer to elevation drawing for direction of opening.



EW.04

Exterior Window 1135x2625mm
Full Height Window, Tilt&Turn Window to the Top, Fixed Glass Panel to the Bottom

Detail Reference: TBC

*Window opening directions may differ, refer to elevation drawing for direction of opening.

EW.11

Exterior Window 1135x2175mm
Full Height Window, Tilt&Turn Window to the Top, Fixed Glass Panel to the Bottom

Detail Reference: TBC

*Window opening directions may differ, refer to elevation drawing for direction of opening.

EW.12

Exterior Window 910x2175mm
Full Height Window, Tilt&Turn Window to the Top, Fixed Glass Panel to the Bottom

Detail Reference: TBC

*Window opening directions may differ, refer to elevation drawing for direction of opening.

EW.13

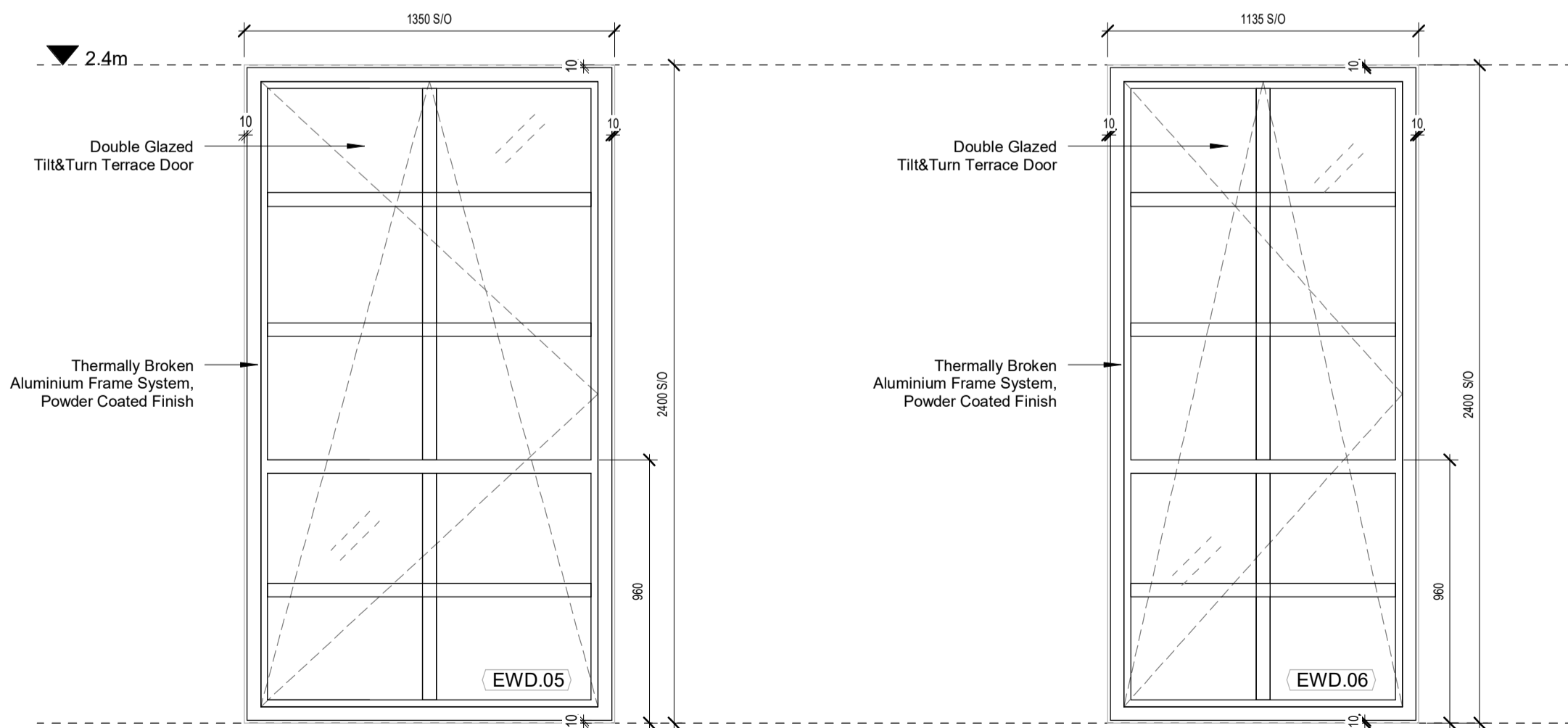
Exterior Window 1350x2175mm
Full Height Window, Tilt&Turn Window to the Top, Fixed Glass Panel to the Bottom

Detail Reference: TBC

*Window opening directions may differ, refer to elevation drawing for direction of opening.

EW-Window Schedule Overall Totals				
Window Type	Description	External Brick Opening (Horizontal)	External Brick Opening (Vertical)	Security
EW.01	Full Height Window, Tilt&Turn to the Top, Fixed Glass Panel to the Bottom	1135 mm	2400 mm	n/a
EW.01: 34				
EW.2A	Full Height Window, Tilt&Turn to the Top, Fixed Glass Panel to the Bottom	910 mm	2400 mm	n/a
EW.2A: 20				
EW.2B	Full Height Window, Tilt&Turn to the Top, Fixed Glass Panel to the Bottom	910 mm	2400 mm	n/a
EW.2B: 7				
EW.03	Full Height Window, Tilt&Turn to the Top, Fixed Glass Panel to the Bottom	1350 mm	2400 mm	n/a
EW.03: 35				
EW.04	Full Height Window, Tilt&Turn to the Top, Fixed Glass Panel to the Bottom	1135 mm	2625 mm	n/a
EW.04: 2				
EW.11	Full Height Window, Tilt&Turn to the Top, Fixed Glass Panel to the Bottom	1135 mm	2175 mm	n/a
EW.11: 9				
EW.12	Full Height Window, Tilt&Turn to the Top, Fixed Glass Panel to the Bottom	910 mm	2175 mm	n/a
EW.12: 4				
EW.13	Full Height Window, Tilt&Turn to the Top, Fixed Glass Panel to the Bottom	1350 mm	2175 mm	n/a
EW.13: 1				
EWD.05	Full Height Window, Tilt&Turn Terrace Door	1350 mm	2400 mm	PAS 24
EWD.05: 4				
EWD.06	Full Height Window, Tilt&Turn Terrace Door	1135 mm	2400 mm	PAS 24
EWD.06: 1				

All Windows: 117



EWD.05

Exterior Window Door 1350x2400mm
Full Height Window, Tilt&Turn Terrace Door

Detail Reference: TBC

*Window opening directions may differ, refer to elevation drawing for direction of opening.

EWD.06

Exterior Window Door 1135x2400mm
Full Height Window, Tilt&Turn Terrace Door

Detail Reference: TBC

*Window opening directions may differ, refer to elevation drawing for direction of opening.

DISCLAIMER

DO NOT SCALE FROM THIS DRAWING. FIGURED DIMENSIONS ARE TAKEN TO STRUCTURE UNLESS INDICATED OTHERWISE. ALL DIMENSIONS TO BE CHECKED ON SITE PRIOR TO COMMENCEMENT OF WORK. DRAWING TO BE READ IN CONJUNCTION WITH ALL OTHER ARCHITECT'S DRAWINGS, CONSTRUCTION NOTES, SPECIFICATIONS AND EMPLOYER'S REQUIREMENTS WHERE APPLICABLE. ANY DISCREPANCY MUST BE BROUGHT TO THE ATTENTION OF AHR. IF IN DOUBT, ASK. ANY MODIFICATION TO THIS DRAWING MUST BE CARRIED OUT BY AHR. THIS DRAWING REMAINS UNDER THE COPYRIGHT OF AHR ARCHITECTS LIMITED. PLEASE OBTAIN PERMISSION BEFORE COPYING. WHERE METHOD OF CONSTRUCTION INCORPORATES TIMBER/LIGHT GAUGE STEEL FRAME ALL ELEMENTS OF FRAME INCLUDING STUD LOCATIONS, NOGGINS, SHEATHING, LINTELS, TRUSSESS AND WIND BRACING TO BE TO FRAME MANUFACTURER'S DESIGN. DETAIL AND SPECIFICATION. ALL STRUCTURAL ELEMENTS ARE SHOWN INDICATIVELY. FOR ALL ELEMENTS OF STRUCTURE REFER TO STRUCTURAL ENGINEER'S AND SPECIALIST SUBCONTRACTOR/ FABRICATOR'S DESIGN, DETAIL AND SPECIFICATION. ALL MECHANICAL AND ELECTRICAL ELEMENTS ARE SHOWN INDICATIVELY. FOR ALL M&E INSTALLATIONS REFER TO BUILDING SERVICES ENGINEER'S AND SPECIALIST SUBCONTRACTOR'S DESIGN, DETAIL AND SPECIFICATION.

SCALE 1 : 20



Rev	Description	Date	Dr by	App by
C1	Issued for Construction	08.06.23	MAG	KL
P3	Critical Style Windows change	10.02.23	MAG	KL
P2	EW(D)/ PD Schedules issued	30.08.22	MAG	KL
P1	First Issue	12.07.22	MAG	KL

original by: Author
date created: 17/05/22
approved by: Approver



client name	GM London		
project	19-37 Highgate Road		
drawing	External Windows - Types		
computer file	C:\Users\m.a.george\REVIT LOCAL FILES\HR-AHR-ZZ-DR-A-31-200_1.mep.a.george\DWG1.rvt	plot date	
project number	2019.00386.001	scale	1 : 20 @A1
drawing number	HR-AHR-B1-ZZ-DR-A-31-200	rev	C1
		issue status	S1

This drawing is to be read in conjunction with all related drawings. All dimensions must be checked and verified on site before commencing any work or producing shop drawings. The originator should be notified immediately of any discrepancy. This drawing is copyright and remains the property of AHR.