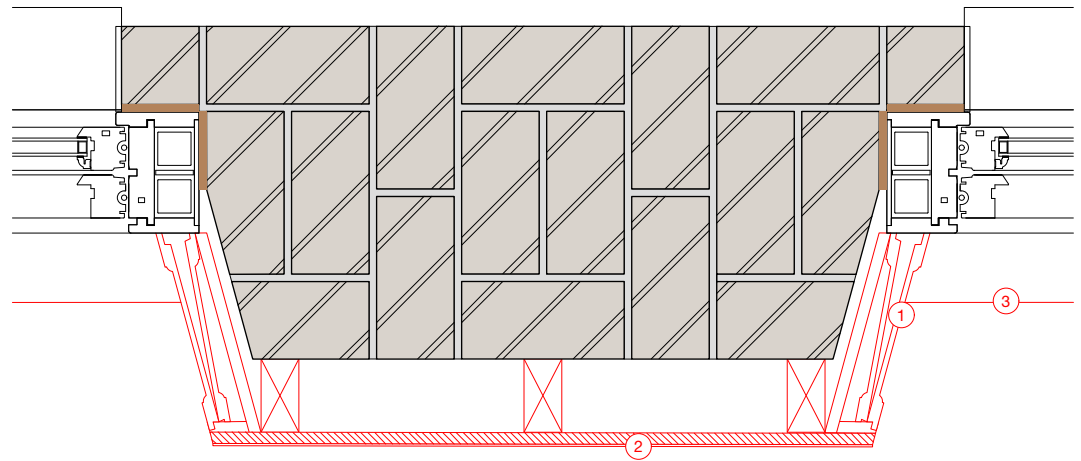



For construction purposes:
 - Do not scale this drawing.
 - All dimensions and levels to be checked on site.
 - Discrepancies to be reported to Miltiadou Cook Mitzman architects before proceeding.
 - If in any doubt about information on this drawing contact Miltiadou Cook Mitzman architects.

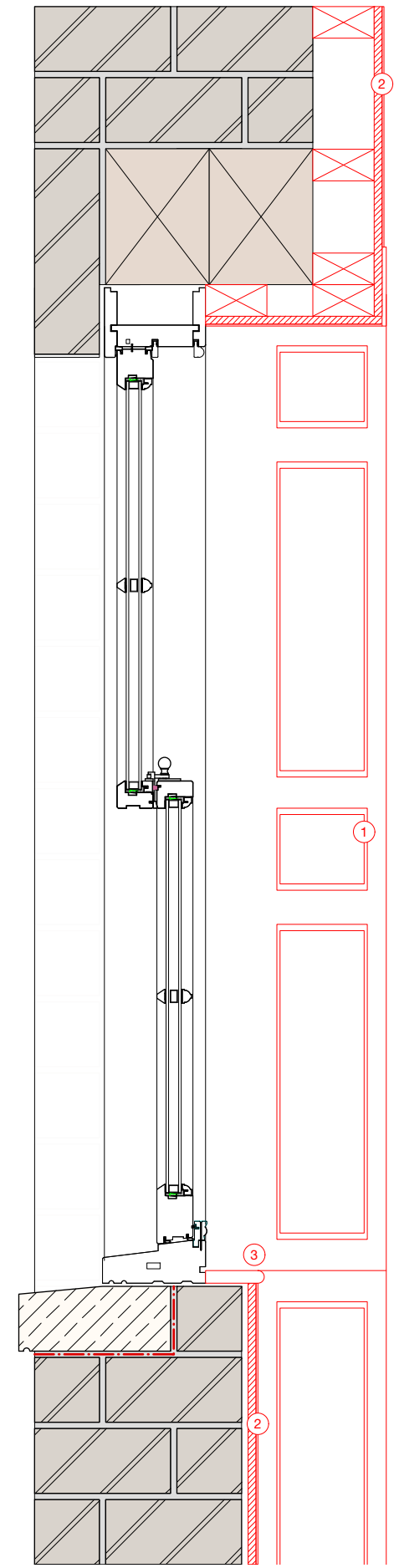
REVISION NUMBER	DATE	BY	NOTES
P1	21/12/2023	SM	Issued for Planning



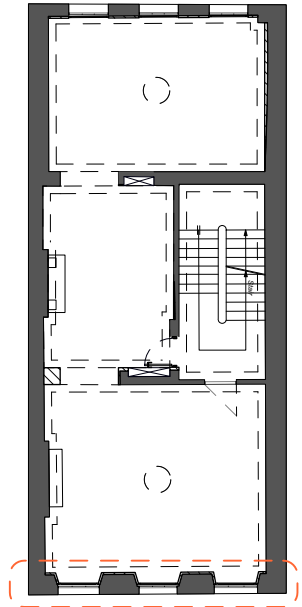
1 Existing/ Demolition Front Window Jamb Detail
1:10

KEY

-  DEMOLITION
- ① CAREFUL REMOVAL AND OVERHAULING OF EXISTING SHUTTER BOXES
- ② REMOVAL OF EXISTING DRY LINING AND STUDWORK
- ③ REMOVAL OF EXISTING WINDOW CILL



S Existing/ Demolition Window Head and Cill Detail
1:10



KEY PLAN

MILTADOU COOK MITZMAN architects llp
 MCMa
 020 7722 8525 office@mcma.design www.mcma.design
 3rd Floor 10-12 Emerald Street London WC1N 3QA

CLIENT
 Miszkiel

PROJECT
 52 Doughty Street, London, WC1N 2LS

SHEET TITLE
 Existing/ Demolition Front Elevation Window Details

SCALE
 1:10

DATE CREATED
 OCTOBER 23

DRAWING NUMBER	REVISION
407-DWG-340-01	P1

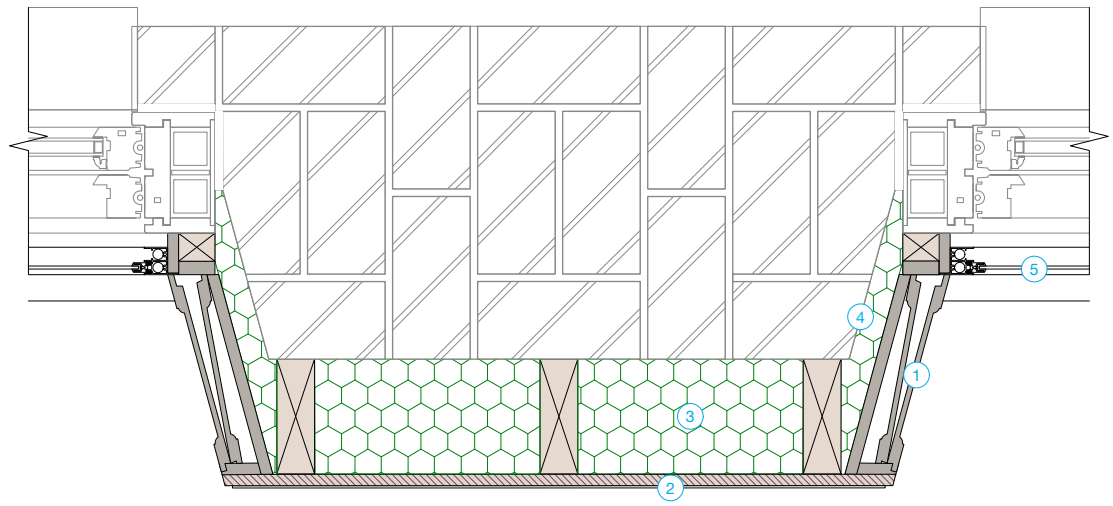
FILE REFERENCE

REVISION


© This drawing is the property of Miltiadou Cook Mitzman architects. No disclosure or copy of it may be made without the written permission of Miltiadou Cook Mitzman architects.

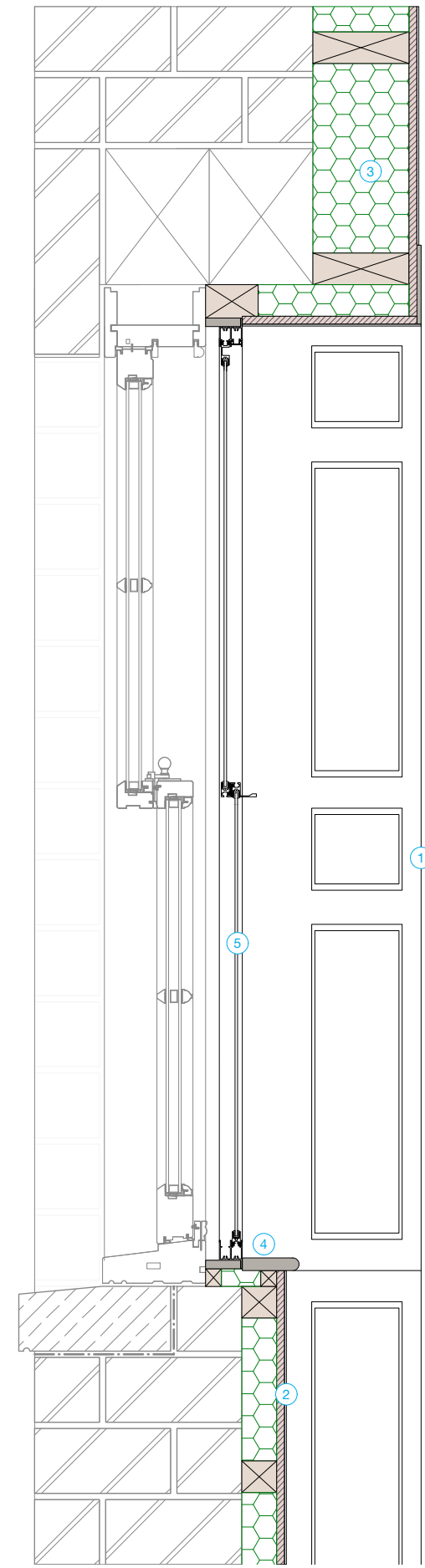
For construction purposes:
 - Do not scale this drawing.
 - All dimensions and levels to be checked on site.
 - Discrepancies to be reported to Miltiadou Cook Mitzman architects before proceeding.
 - If in any doubt about information on this drawing contact Miltiadou Cook Mitzman architects.

REVISION NUMBER	DATE	BY	NOTES
P1	21/12/2023	SM	Issued for Planning

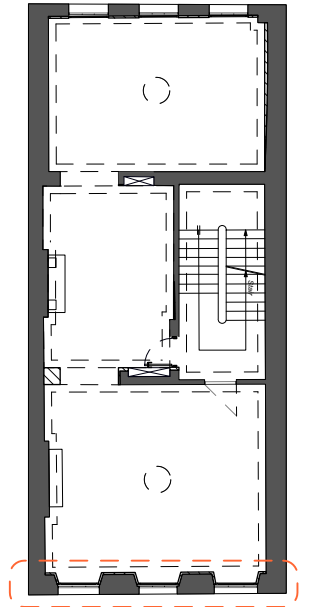


P Proposed Front Window Jamb Detail
1:10

- KEY**
-  EXISTING
 - 1** EXISTING OVERHAULED SHUTTER BOXES REPOSITIONED
 - 2** NEW DRYLINING AND STUDWORK
 - 3** CELLULOSE BREATHABLE INSULATION
 - 4** AEROGEL INSULATION
 - 5** SLIMLINE SECONDARY GLAZING BY SELECTAGLAZE



S Proposed Front Window Head and Cill Detail
1:10



KEY PLAN

MILTADOU COOK MITZMAN architects llp
 MCMa
 020 7722 8525 office@mcma.design www.mcma.design
 3rd Floor 10-12 Emerald Street London WC1N 3QA

CLIENT
 Miszkiel

PROJECT
 52 Doughty Street, London, WC1N 2LS

SHEET TITLE
 Proposed Front Elevation Window Details

SCALE
 1:10

DATE CREATED
 OCTOBER 23

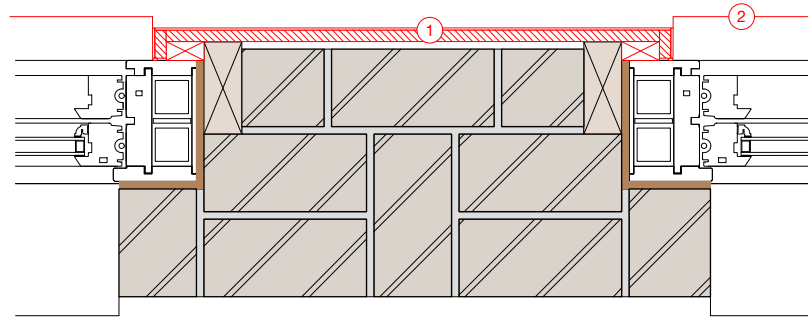
DRAWING NUMBER	REVISION
407-DWG-340-02	P1

© This drawing is the property of Miltiadou Cook Mitzman architects. No disclosure or copy of it may be made without the written permission of Miltiadou Cook Mitzman architects.

For construction purposes:


- Do not scale this drawing.
- All dimensions and levels to be checked on site.
- Discrepancies to be reported to Miltiadou Cook Mitzman architects before proceeding.
- If in any doubt about information on this drawing contact Miltiadou Cook Mitzman architects.

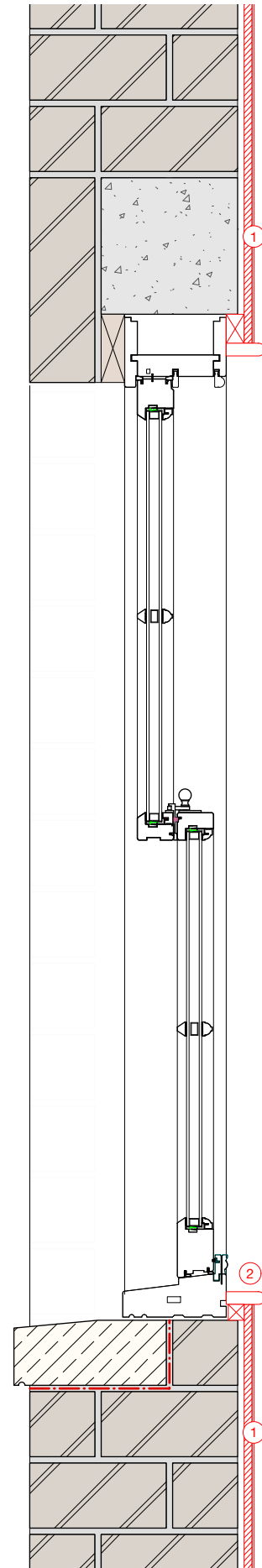
REVISION NUMBER	DATE	BY	NOTES
P1	21/12/2023	SM	Issued for Planning



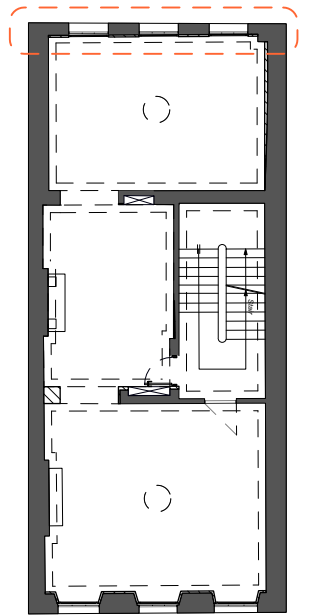
P Existing/ Demolition Rear Window Jamb Detail
1:10

KEY

-  DEMOLITION
- 1** REMOVAL OF EXISTING DRY LINING AND STUDWORK
- 2** REMOVAL OF EXISTING WINDOW CILL



S Existing/ Demolition Rear Window Head and Cill Detail
1:10



KEY PLAN

MILTIADOU COOK MITZMAN architects llp
MCMa

020 7722 8525 office@mcma.design www.mcma.design
3rd Floor 10-12 Emerald Street London WC1N 3QA

CLIENT
Miszkiel

PROJECT
52 Doughty Street, London, WC1N 2LS

SHEET TITLE
Existing/ Demolition Rear Elevation Window Details

SCALE
1:10

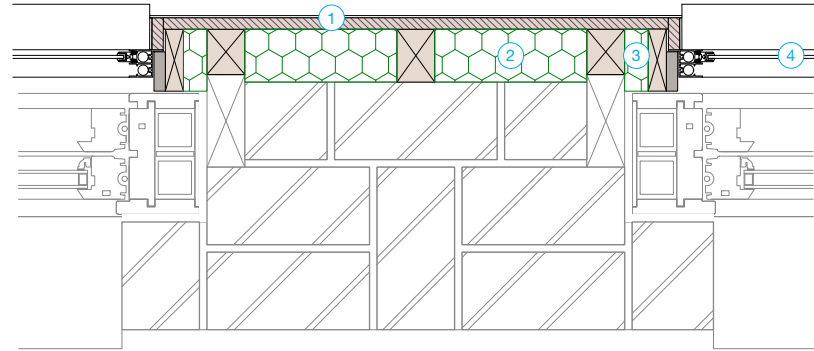
DATE CREATED OCTOBER 23 **FILE REFERENCE**

DRAWING NUMBER	REVISION
407-DWG-341-01	P1

For construction purposes:






- Do not scale this drawing.
- All dimensions and levels to be checked on site.
- Discrepancies to be reported to Miltiadou Cook Mitzman architects before proceeding.
- If in any doubt about information on this drawing contact Miltiadou Cook Mitzman architects.

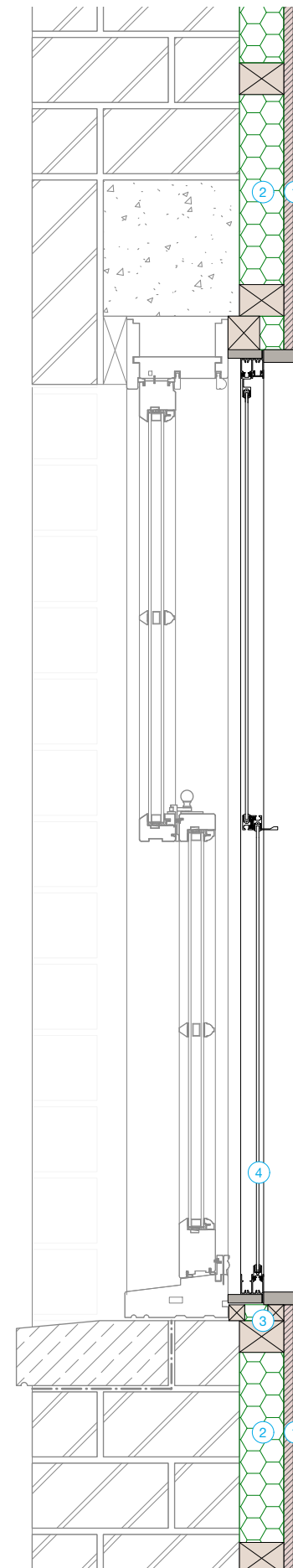
REVISION NUMBER	DATE	BY	NOTES
P1	21/12/2023	SM	Issued for Planning



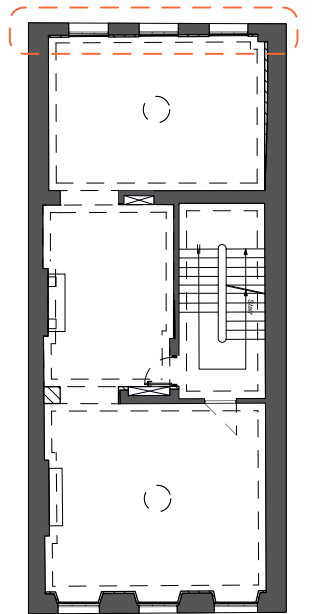
P Existing/ Demolition Rear Window Jamb Detail
1:10

KEY

-  EXISTING
-  NEW DRYLINING AND STUDWORK
-  CELLULOSE BREATHABLE INSULATION
-  AEROGEL INSULATION
-  SLIMLINE SECONDARY GLAZING BY SELECTAGLAZE



S Existing/ Demolition Rear Window Head and Cill Detail
1:10



KEY PLAN

MILTIADOU COOK MITZMAN architects llp

020 7722 8525 3rd Floor
office@mcma.design 10-12 Emerald Street
www.mcma.design London WC1N 3QA

CLIENT
Miszkiel

PROJECT
52 Doughty Street, London, WC1N 2LS

SHEET TITLE
Proposed Rear Elevation Window Details

SCALE
1:10

DATE CREATED FILE REFERENCE
OCTOBER 23

DRAWING NUMBER	REVISION
407-DWG-341-02	P1