

THIS DRAWING IS COPYRIGHT OF BROOKER FLYNN ARCHITECTS LTD AND MAY NOT BE REPRODUCED IN ANY FORM OR TRANSFERRED TO OTHER PARTIES BY ELECTRONIC MEANS WITHOUT PRIOR WRITTEN CONSENT. NO DIMENSIONS TO BE SCALED FROM THIS DRAWING.

PROPOSED KEY

ALL EXISTING FIRE ALARM INSTALLATION TO BE CHECKED AND CONFIRMED ON SITE AS EXISTING/PROPOSED

ALL EXISTING INFORMATION HAS BEEN PROVIDED FROM WHS INFORMATION - MAIN CONTRACTOR TO VERIFY ANY DISCREPANCIES PRIOR TO SOS.

PROPOSED AREA VALUES

TOTAL SALES FLOOR AREA
AREA MINUS PARTITIONS & BOH AREAS.

DEMISE AREA
291 SQM / 3232 SQ.FT

SALES FLOOR AREA
264 SQM / 2842 SQ.FT

- C02 C02 FIRE EXTINGUISHER
- H20 H20 FIRE EXTINGUISHER
- 30MINS FIRE RATED PARTITION
- 60MINS FIRE RATED PARTITION
- / / / SALES FLOOR AREA
- / / / BOH FLOOR AREA
- EXIT** EN ISO 7010 COMPLIANT ILLUMINATED FIRE ESCAPE SIGNAGE.

05	29-02-14	UPDATED FIRST ISSUE FOR TENDER	AW	GB
04	24-01-29	FIRST ISSUE FOR TENDER	GB	GB
03	24-01-24	UPDATED PRELIMINARY PACK	AW	GB
02	24-01-10	UPDATED PRELIMINARY PACK	AW	GB
01	24-01-08	UPDATED PRELIMINARY PACK	AW	GB

REV	DATE	DESCRIPTION	DRAWN	CHECKED
-----	------	-------------	-------	---------



STORE NAME
KINGS CROSS STATION

COUNTRY
UK

PROJECT
KINGS CROSS STATION

DRAWING
PROPOSED FIRE STRATEGY PLAN

CONSULTANT
BROOKER FLYNN ARCHITECTS

DISCIPLINE DESCRIPTION
ARCHITECTURE

CONSULTANT LOGO



SCALE	PAPER SIZE	DATE	DRAWN	CHECKED
-------	------------	------	-------	---------

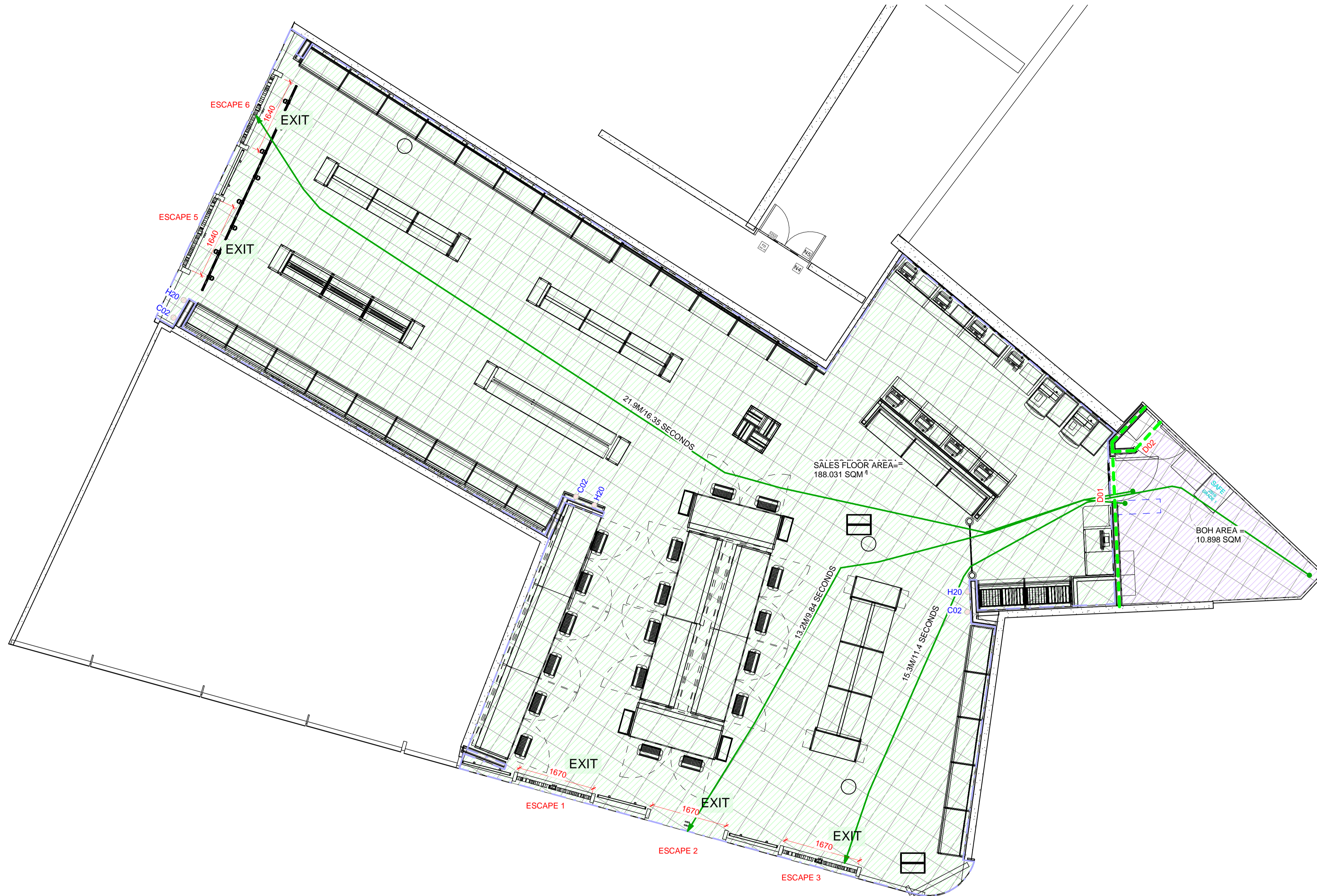
As indicated

STORE NUMBER	PROJECT No	DISCIPLINE CODE	DRAWING No
--------------	------------	-----------------	------------

CONSULTANT PROJECT No	STATUS	REV
-----------------------	--------	-----

23.1165 DD05

FOR APPROVAL



1 PROPOSED GA FIRE STRATEGY PLAN
1:50

BREAKDOWN OF GROUND FLOOR AREAS
SALES AREA = 191 SQ.M.
BOH AREA = 6.9 SQ.M.

OCCUPANCY LEVELS
FLOOR SPACE FACTOR (SQ.M./PERSON):
SALES AREAS - 1 PERSON PER 2 SQ.M.
BOH AREAS - 1 PERSON PER 30 SQ.M

SALES AREA: 191 / 2 = 95 PERSONS
BOH AREA: 6.9 / 30 = 1 PERSONS

TOTAL GROUND FLOOR OCCUPANCY = 96

ESCAPE ROUTES
TOTAL 6NO. ESCAPE ROUTE AS FOLLOWS:
(REFER TO REFS ON DRAWING)

- ESCAPE CAPACITY FIGURES TAKEN FROM APPROVED DOCUMENT B, TABLE 4
- 1) ESCAPE 1, 1670mm APPROX CLEAR WIDTH 1670/5 = 334 PEOPLE
 - 2) ESCAPE 2, 1670mm APPROX CLEAR WIDTH 1670/5 = 334 PEOPLE
 - 3) ESCAPE 3, 1670mm APPROX CLEAR WIDTH 1670/5 = 334 PEOPLE
 - 4) ESCAPE 4, 1670mm APPROX CLEAR WIDTH 1670/5 = 334 PEOPLE
 - 5) ESCAPE 5, 1670mm APPROX CLEAR WIDTH 1670/5 = 334 PEOPLE
 - 6) ESCAPE 6, 1670mm APPROX CLEAR WIDTH 1670/5 = 334 PEOPLE

IN THE EVENT OF A FIRE, ALL OCCUPANTS CAN ESCAPE VIA THE MAIN ENTRANCE.

TRAVEL DISTANCE LIMITATIONS = 45m IN MORE THAN ONE DIRECTION. AS DEFINED IN TABLE 2 OF APPROVED DOCUMENT B.

IT IS UNDERSTOOD THAT WHILST THE STORE IS CLOSED THERE MAY STILL BE OPPORTUNITY FOR LIMITED RESTOCKING WORKS FOR UP TO 4 STAFF. IN THIS CASE THE ROLLERSHUTTER TO THE FRONT OF THE STORE WILL BE CLOSED. ESCAPE THROUGH THE DOORS WILL BE POSSIBLE. THIS WILL BE SECURED BY SINGLE THUMB TURN FROM THE INSIDE.

- C02 C02 FIRE EXTINGUISHER
- H20 H20 FIRE EXTINGUISHER
- - - 60MINS FIRE RATED PARTITION
- - - FD60S 60MINS FIRE RATED DOOR
- - - 30MINS FIRE RATED PARTITION
- - - FD30S 30MINS FIRE RATED DOOR
- / / / SALES FLOOR AREA
- / / / BOH FLOOR AREA
- EXIT** EN ISO 7010 COMPLIANT ILLUMINATED FIRE ESCAPE SIGNAGE.