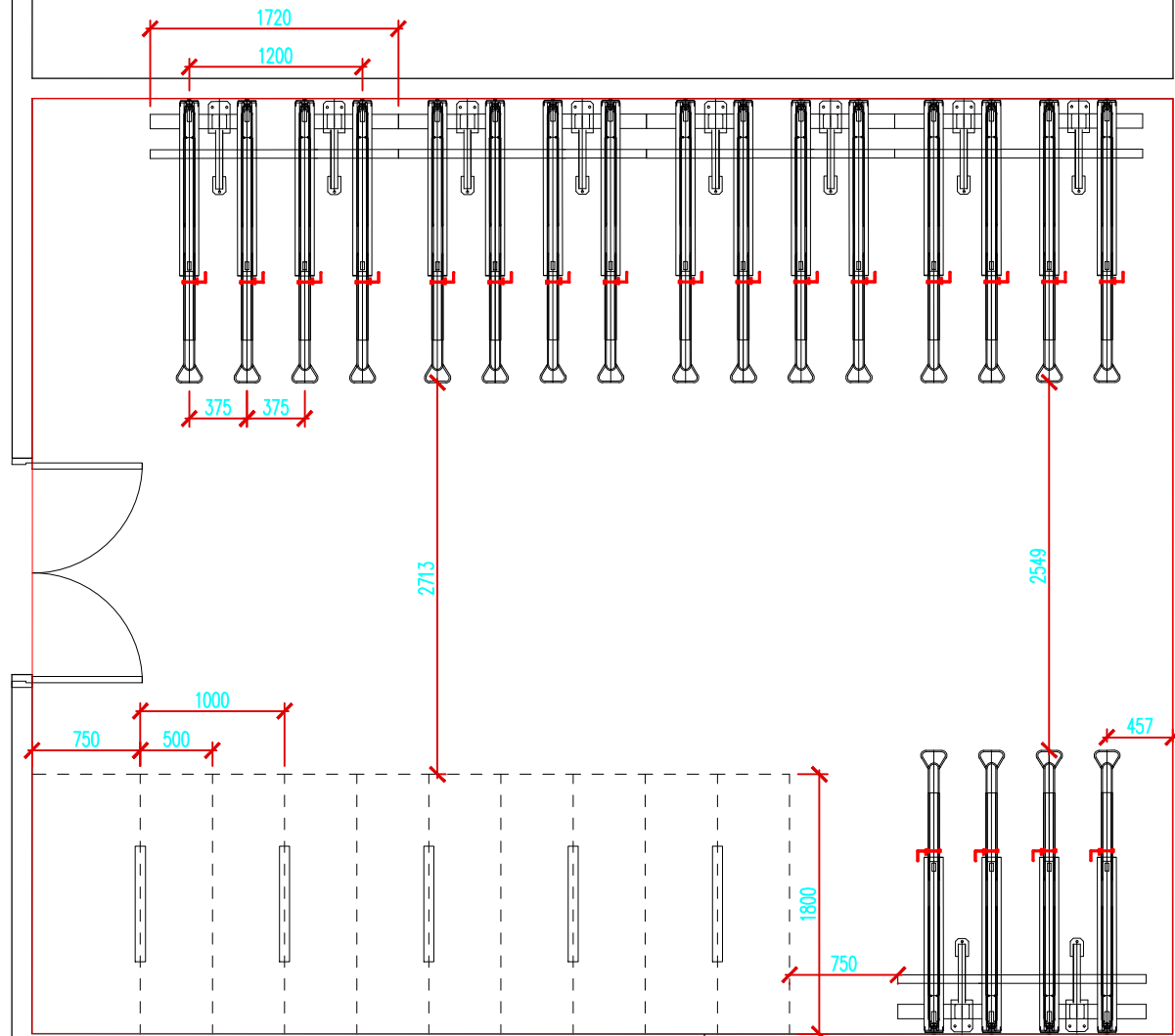


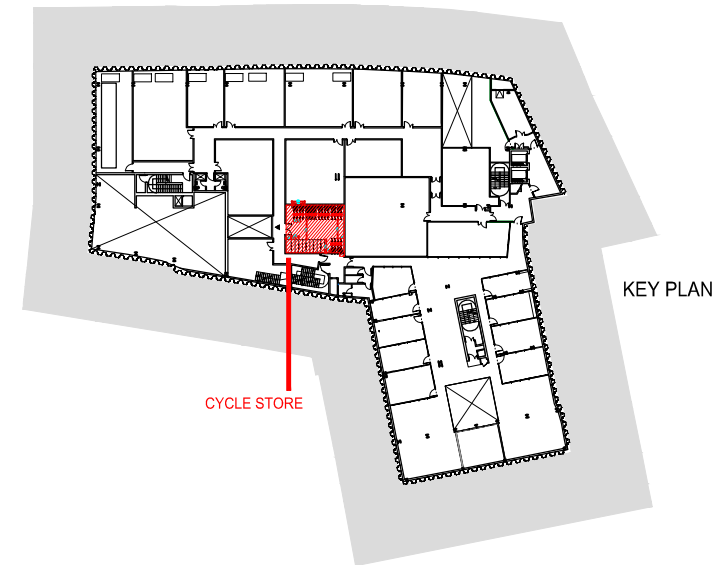
REVISIONS

Rev.	Date	By
-	-	-
Issued for Planning	27.02.2024	NG

CYCLE STORE
2-TIER CYCLE RACKS 40
STANDARD SHEFFIELD CYCLE STANDS 10
50 SPACES IN 1 SECURE ZONE
52 sqm



MIDDLE BASEMENT PLAN

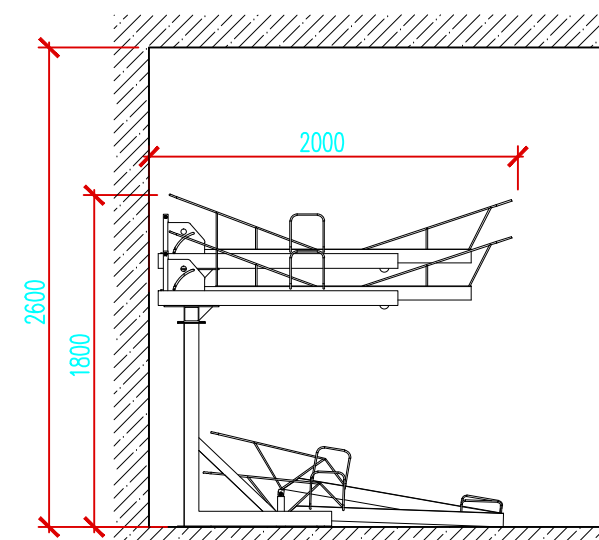
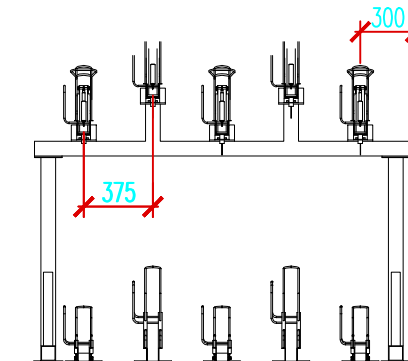


KEY PLAN

CYCLE STORE SECTION

The 2-tier rack is a double decker bicycle rack. This racking system stores one bike directly above the other, increasing therefore the amount of bicycles parked by up to 50%. The manufacturer's design guidelines are as follows (see drawing 131050 A(90)710 bicycle Racks Details):

- The headroom is the most important factor for this racking system. A minimum of 2600mm is required for maximum capacity.
- Leave 300-400mm to any adjoining side wall to give space for the handlebars. In our case we are proposing to leave 300mm min.
- The racks are spaced at 375mm apart.
- 2000mm should be allowed for the rack itself, plus between 2500mm in front for access.



Visitors Cycle Store Elevation - 2 tier rack showing cycles

SUBMISSION DRAWING FOR APPROVAL
 OF DETAILS REQUIRED BY CONDITION 4
 OF PLANNING PERMISSION DATED
 1309/2023 (ref 2020/3698/P)

PLANNING APPLICATION

ALL DIMENSIONS TO BE CHECKED ON SITE
 WORK TO FIGURED DIMENSIONS ONLY
 REPORT DISCREPANCIES TO THE ARCHITECT
 AT ONCE BEFORE PROCEEDING

Contemporary Design Solutions



46 Great Marlborough Street
 London
 W1F 7JW
 Telephone: 020 7494 9000 Fax: 020 7494 4944

Client

HALLMARK PROPERTY GROUP

Project Title

B8 Warehouse to Class E Change of Use
 69-73 Holmes Road

Drawing Title

MIDDLE BASEMENT FLOOR
 CYCLE STORE

Scale: 1: Varied @ A3 Date: Feb 2024

Drawn: NG Checked: CT

Drawing No.: 131050 A(90)085 Rev.: -

CAD plot date: 29 Feb 2024 - 09:55am