

**1 110. Existing Ground Floor Plan**  
1 : 100

**General Notes**  
This drawing is copyright of KSR architects. This drawing must be read in conjunction with the Designer's Risk Assessment, specification and all other relevant documentation and drawings.  
KSR architects accept no liability for any expense, loss or damage of whatsoever nature and however arising from any variation made to this drawing or in the execution of the work to which it relates which has not been referred to them and their approval obtained.  
Areas are based on un-checked survey and are approximate only. Do not scale from this drawing or the digital data, only figured dimensions are to be used. Refer to linear scale for guidance.  
Check all dimensions on site prior to carrying out any works and advise any discrepancy

0 1 2 4 8m		A Planning		13/02/24		AB	
Scale 1:100 @A1		Rev	Description	Date	By		

Status:  
**Planning**  
Scale:  
1 : 100@A1

Project:  
**68 Elsworthy Road**

Date of first issue:  
**13/02/24**

Drawn By:  
**AB**

Checked By:  
**DC**

© KSR Architects

**KSR** ARCHITECTS &  
INTERIOR DESIGNERS  
KSR Architects LLP  
14 Greenfield Street  
London W1V 0ND  
m@ksrarchitects.com  
t: +44 (0)20 7682 5000  
www.ksrarchitects.com

Drawing Title:

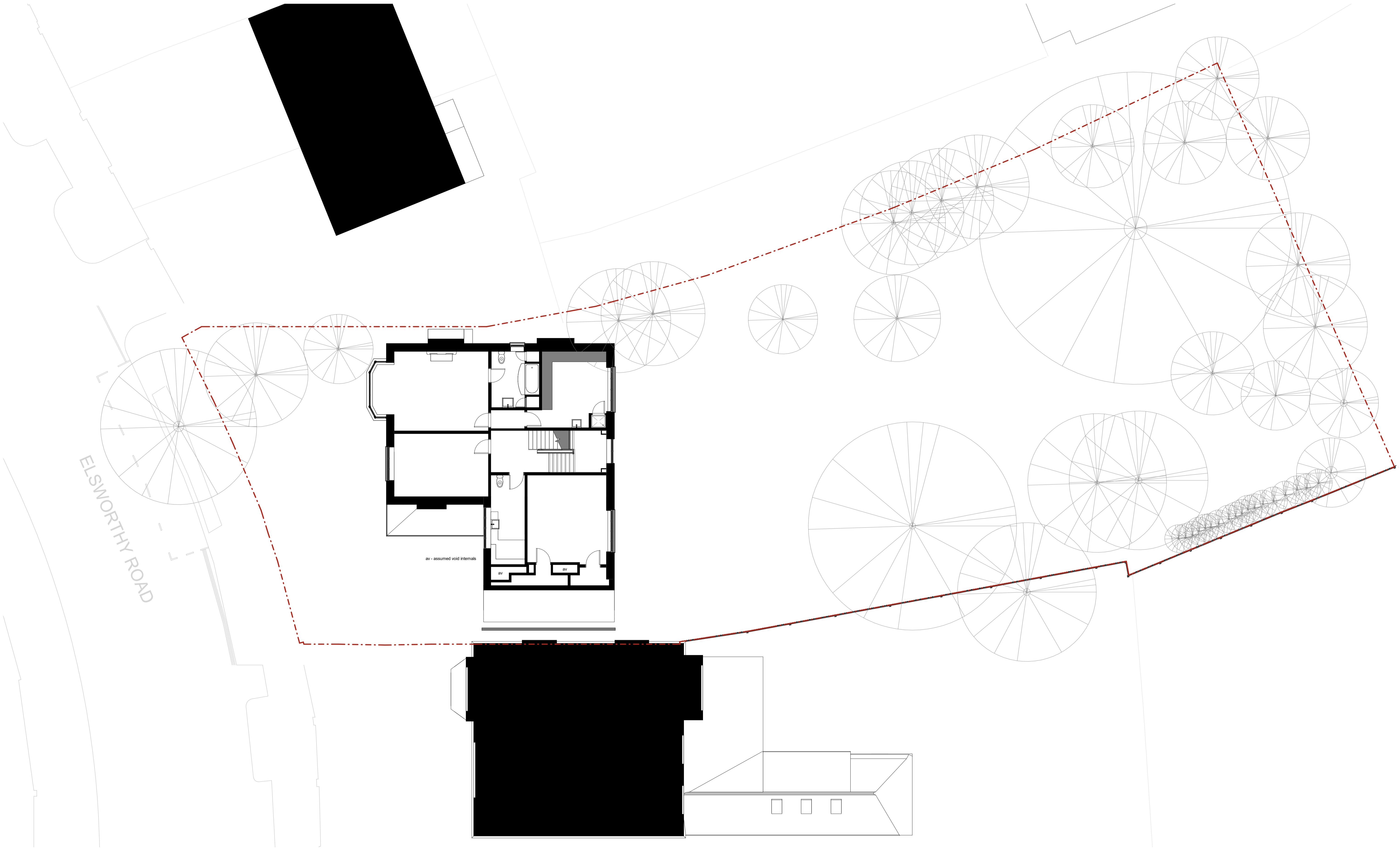
Existing Plans - Ground Floor

Drawing No:

**22059-X1-110**

Rev:

**A**



1 111. Existing First Floor Plan  
1 : 100

**General Notes**

This drawing is copyright of KSR architects. This drawing must be read in conjunction with the Designer's Risk Assessment, specification and all other relevant documentation and drawings.  
KSR architects accept no liability for any expense, loss or damage of whatsoever nature and however arising from any variation made to this drawing or in the execution of the work to which it relates which has not been referred to them and their approval obtained.  
Areas are based on unchecked survey and are approximate only. Do not scale from this drawing or the digital data, only figured dimensions are to be used. Refer to linear scale for guidance.  
Check all dimensions on site prior to carrying out any works and advise any discrepancy

Status:  
**Planning**

Scale:  
1 : 100@A1

Project:  
**68 Elsworthy Road**

Date of first issue:  
13/02/24

Drawn By:  
AB

Checked By:  
DC

Drawing No:  
**22059-X1-111**

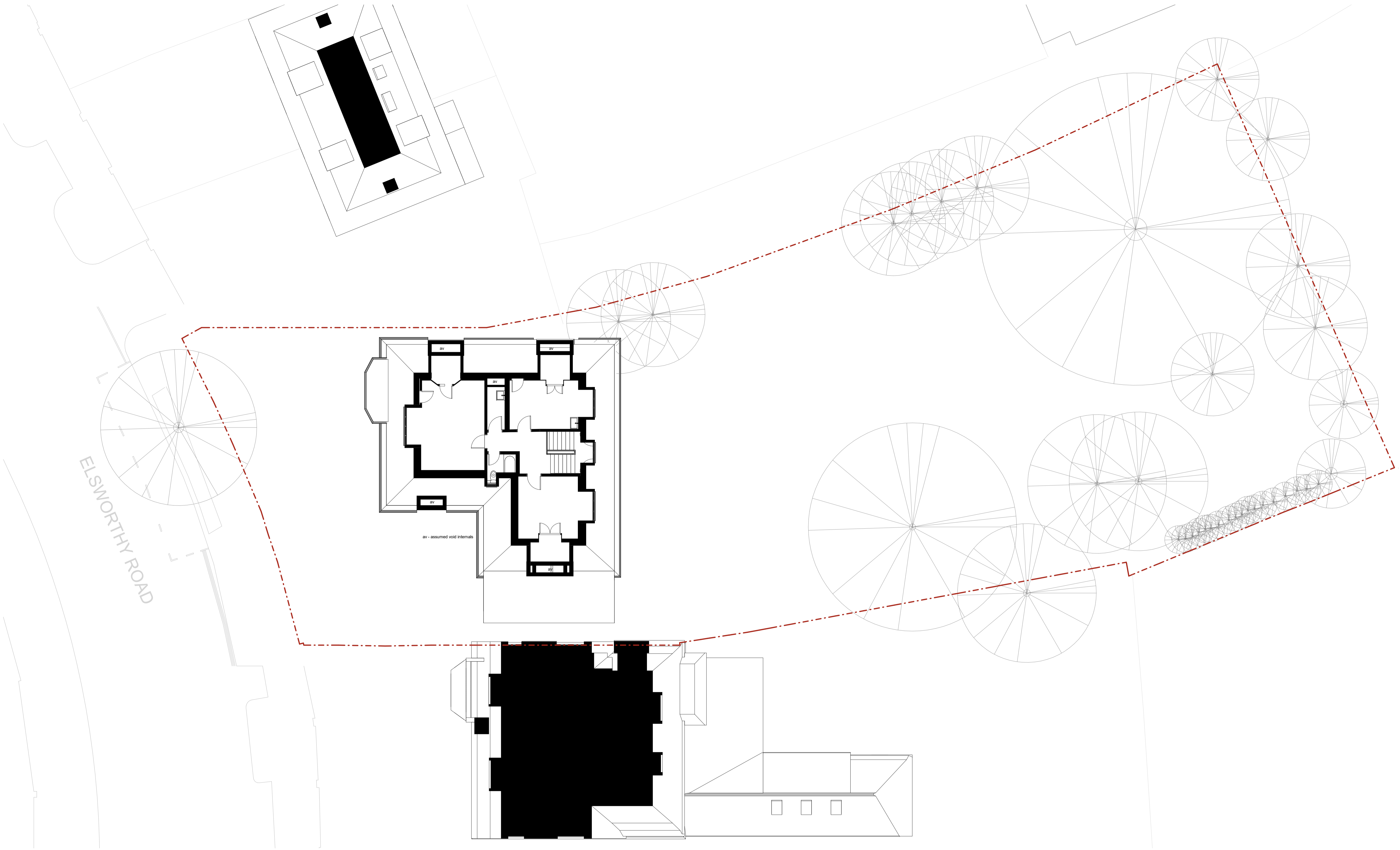
Rev:  
**A**

**KSR ARCHITECTS & INTERIOR DESIGNERS**  
KSR Architects LLP  
14 Greenfield Street  
London NW1 0ND  
info@ksrarchitects.com  
t: +44 (0)20 7682 5000  
www.ksrarchitects.com

0 1 2 4 8m  
Scale 1:100 @A1

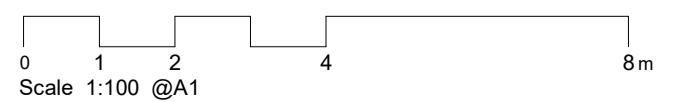
Rev	Description	Date	By
A	Planning	13/02/24	AB

© KSR Architects



1 112. Existing Second Floor Plan  
1 : 100

**General Notes**  
This drawing is copyright of KSR architects. This drawing must be read in conjunction with the Designer's Risk Assessment, specification and all other relevant documentation and drawings.  
KSR architects accept no liability for any expense, loss or damage of whatsoever nature and however arising from any variation made to this drawing or in the execution of the work to which it relates which has not been referred to them and their approval obtained.  
Areas are based on un-checked survey and are approximate only. Do not scale from this drawing or the digital data, only figured dimensions are to be used. Refer to linear scale for guidance.  
Check all dimensions on site prior to carrying out any works and advise any discrepancy



A		Planning	13/02/24	AB
Rev	Description	Date	By	

Status:  
**Planning**  
Scale:  
1 : 100@A1

Project:  
**68 Elsworthy Road**

Date of first issue:  
13/02/24

Drawn By:  
AB

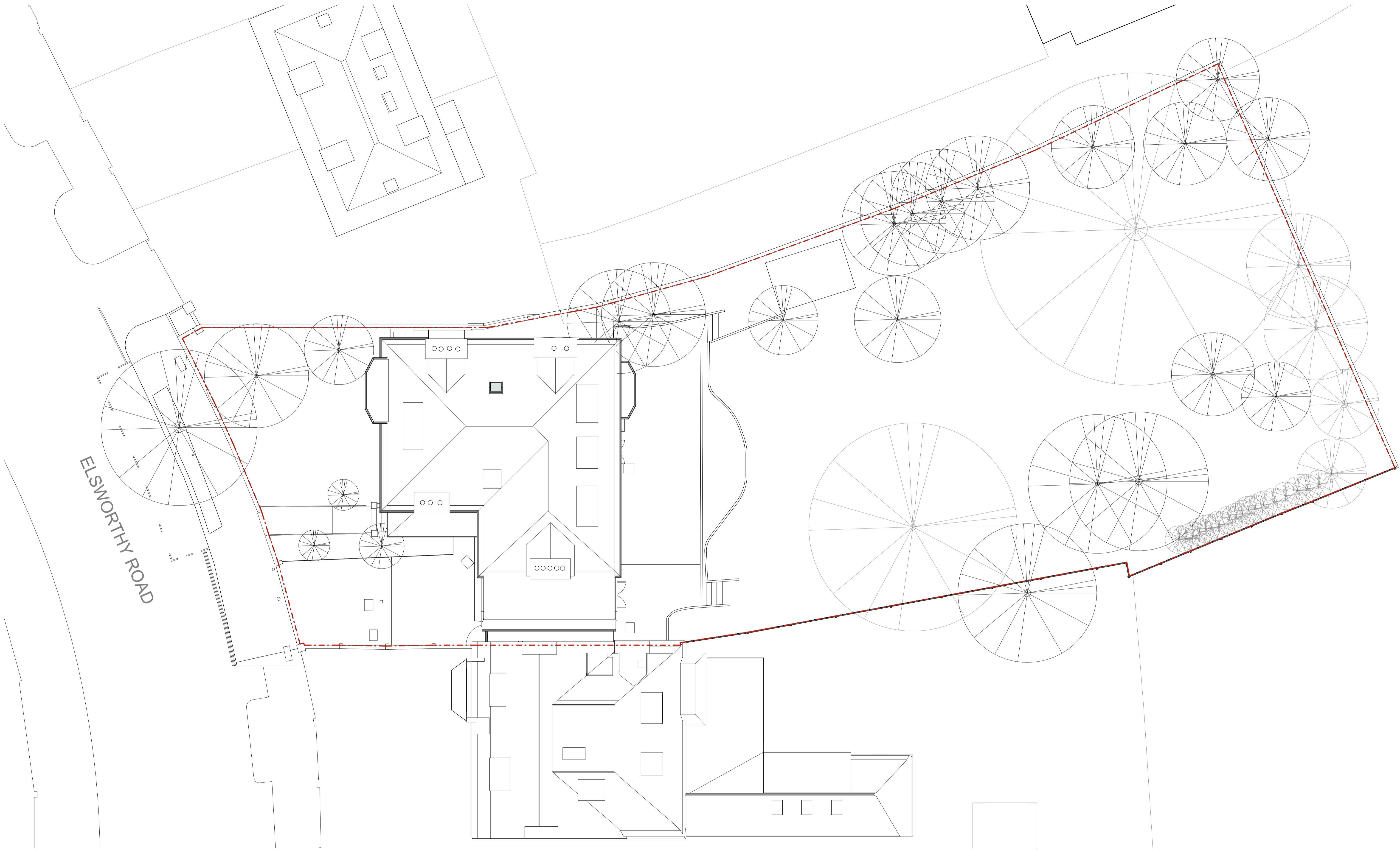
Checked By:  
DC

Drawing No:  
**22059-X1-112**

Rev:  
**A**

**KSR** ARCHITECTS &  
INTERIOR DESIGNERS  
KSR Architects LLP  
14 Greenfield Street  
London NW1 0ND  
info@ksrarchitects.com  
t: +44 (0)20 7682 5000  
www.ksrarchitects.com

Drawing Title:  
**Existing Plans - Second Floor**



1 115. Existing Roof  
1 : 100

**General Notes**

This drawing is copyright of KSR architects. This drawing must be read in conjunction with the Designer's Risk Assessment, specification and all other relevant documentation and drawings.  
KSR architects accept no liability for any expense, loss or damage of whatsoever nature and however arising from any variation made to this drawing or in the execution of the work to which it relates which has not been referred to them and their approval obtained.  
Areas are based on un-checked survey and are approximate only. Do not scale from this drawing or the digital data, only figured dimensions are to be used. Refer to linear scale for guidance.  
Check all dimensions on site prior to carrying out any works and advise any discrepancy

Status:  
**Planning**

Scale:  
1 : 100@A1

Project:  
**68 Elsworthy Road**

Date of first issue:  
13/02/24

Drawn By:  
AB

Checked By:  
DC

Drawing No:  
**22059-X1-114**

Rev:  
**A**

**KSR ARCHITECTS & INTERIOR DESIGNERS**

KSR Architects LLP  
14 Downland Street  
London W1W 0ND

mail@ksrarchitects.com  
t: +44 (0)20 7682 5000  
www.ksrarchitects.com

0 1 2 4 8m

Scale 1:100 @A1

Rev	Description	Date	By
A	Planning	13/02/24	AB

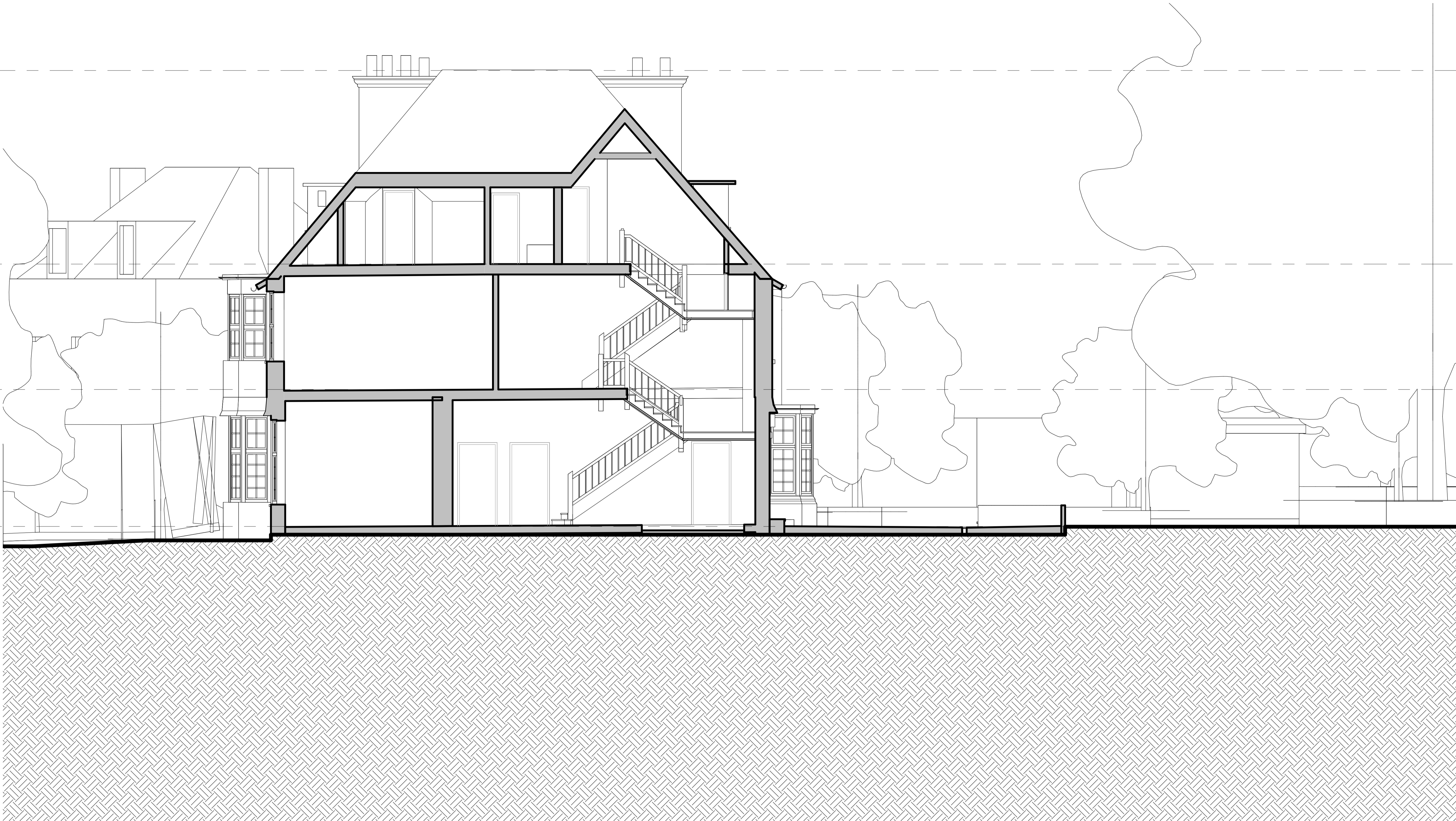
© KSR Architects

109.3  
60112

112. Second  
55080

111. First  
51820

110. Ground  
48260

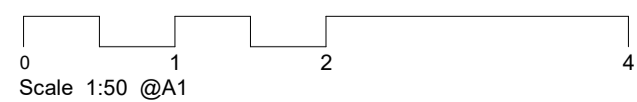


## 1 Existing Section AA

1 : 50

### General Notes

This drawing is copyright of KSR architects. This drawing must be read in conjunction with the Designer's Risk Assessment, specification and all other relevant documentation and drawings.  
KSR architects accept no liability for any expense, loss or damage of whatsoever nature and however arising from any variation made to this drawing or in the execution of the work to which it relates which has not been referred to them and their approval obtained.  
Areas are based on unchecked survey and are approximate only. Do not scale from this drawing or the digital data, only figured dimensions are to be used. Refer to linear scale for guidance.  
Check all dimensions on site prior to carrying out any works and advise any discrepancy



Rev	Description	Date	By
A	Planning	13/02/24	AB

### Status:

**Planning**

Scale:  
1 : 50@A1

Project:

**68 Elsworth Road**

Date of first issue:

13/02/24

© KSR Architects

Drawn By:

AB

Checked By:

DC

Drawing No:

**22059-X2-010**

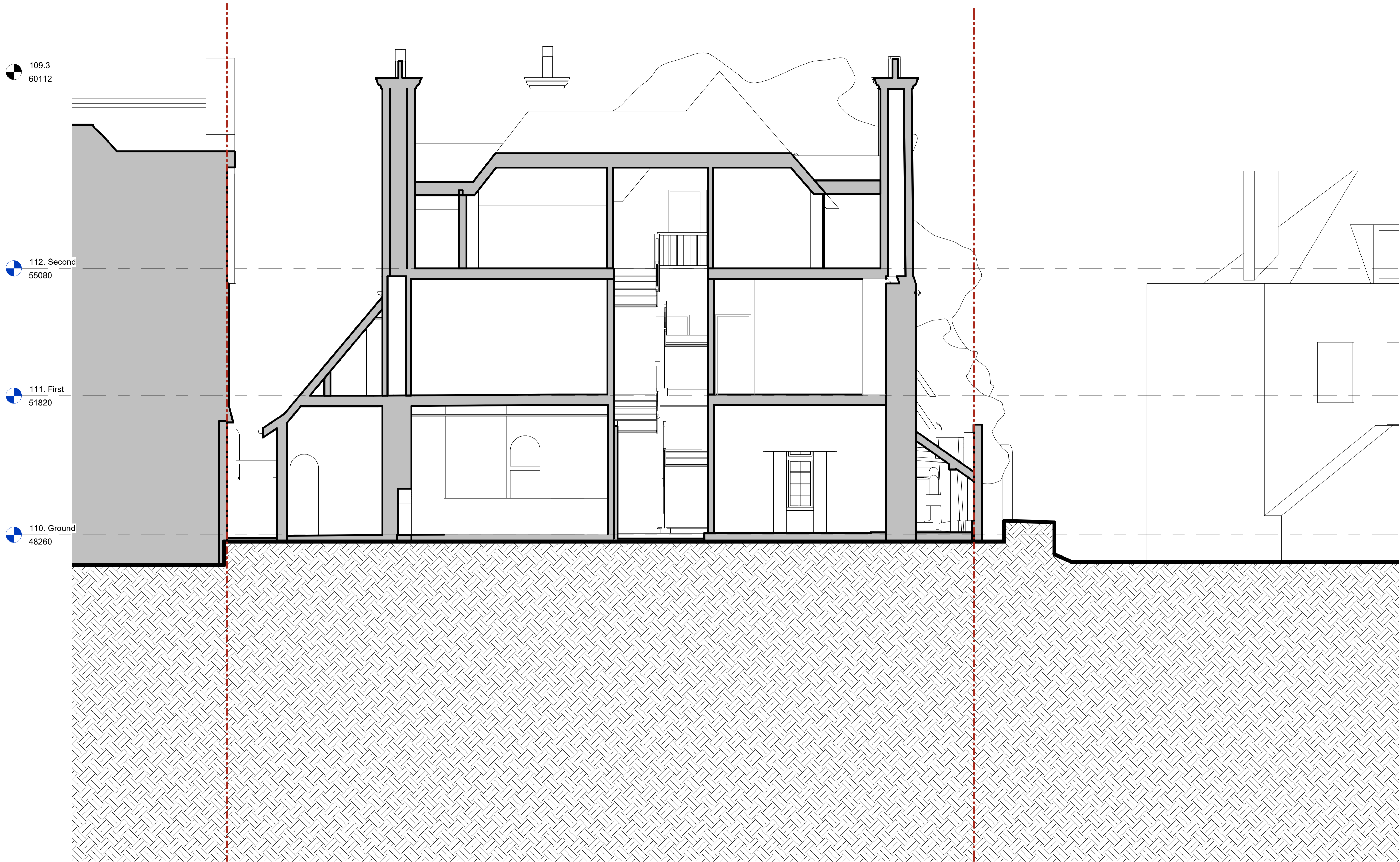
Rev:

**A**

**KSR** ARCHITECTS &  
INTERIOR DESIGNERS  
KSR Architects LLP  
14 Overland Street  
London W1W 0ND  
info@ksrarchitects.com  
t: +44 (0)20 7682 5000  
www.ksrarchitects.com

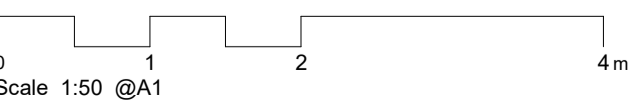
Drawing Title:

Existing Sections - Section AA



1 Existing Section BB  
1 : 50

**General Notes**  
This drawing is copyright of KSR architects. This drawing must be read in conjunction with the Designer's Risk Assessment, specification and all other relevant documentation and drawings.  
KSR architects accept no liability for any expense, loss or damage of whatsoever nature and however arising from any variation made to this drawing or in the execution of the work to which it relates which has not been referred to them and their approval obtained.  
Areas are based on un-checked survey and are approximate only. Do not scale from this drawing or the digital data, only figured dimensions are to be used. Refer to linear scale for guidance.  
Check all dimensions on site prior to carrying out any works and advise any discrepancy.



Rev	Description	Date	By
A	Planning	13/02/24	AB

Status:  
**Planning**  
Scale:  
1 : 50@A1

Project:

68 Elsworthy Road

Date of first issue:

13/02/24

© KSR Architects

Drawn By:

AB

Checked By:

DC

**KSR** ARCHITECTS &  
INTERIOR DESIGNERS  
KSR Architects LLP  
14 Greenfield Street  
London W1V 0ND  
m@kserarchitects.com  
t: +44 (0)20 7682 5000  
www.kserarchitects.com

Drawing Title:

Existing Sections - Section BB

Drawing No:

22059-X2-011

Rev:

A

**General Notes**

This drawing is copyright of KSR architects. This drawing must be read in conjunction with the Designer's Risk Assessment, specification and all other relevant documentation and drawings.

KSR architects accept no liability for any expense, loss or damage of whatsoever nature and however arising from any variation made to this drawing or in the execution of the work to which it relates which has not been referred to them and their approval obtained.

Areas are based on unchecked survey and are approximate only. Do not scale from this drawing or the digital data, only figured dimensions are to be used. Refer to linear scale for guidance.

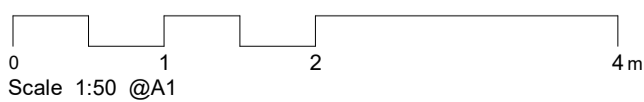
Check all dimensions on site prior to carrying out any works and advise any discrepancy



**1 Existing Front Elevation**  
1 : 50



**2 Existing Rear Elevation**  
1 : 50



A	Planning	13/02/24	AB
Rev	Description	Date	By
Status:			

**Planning**

**KSR ARCHITECTS & INTERIOR DESIGNERS**  
KSR Architects LLP  
14 Greenland Street  
London NW1 0ND  
info@ksrarchitects.com  
t: +44 (0)20 7882 5000  
www.ksrarchitects.com

Project:

**68 Elsworthy Road**

Drawing Title:

Existing Elevations - Front and Back

Date of first issue: 13/02/24  
Scale: 1 : 50 @ A1

Drawn By: AB  
Checked By: DC  
© KSR Architects

Drawing No: **22059-X3-010**  
Rev: **A**

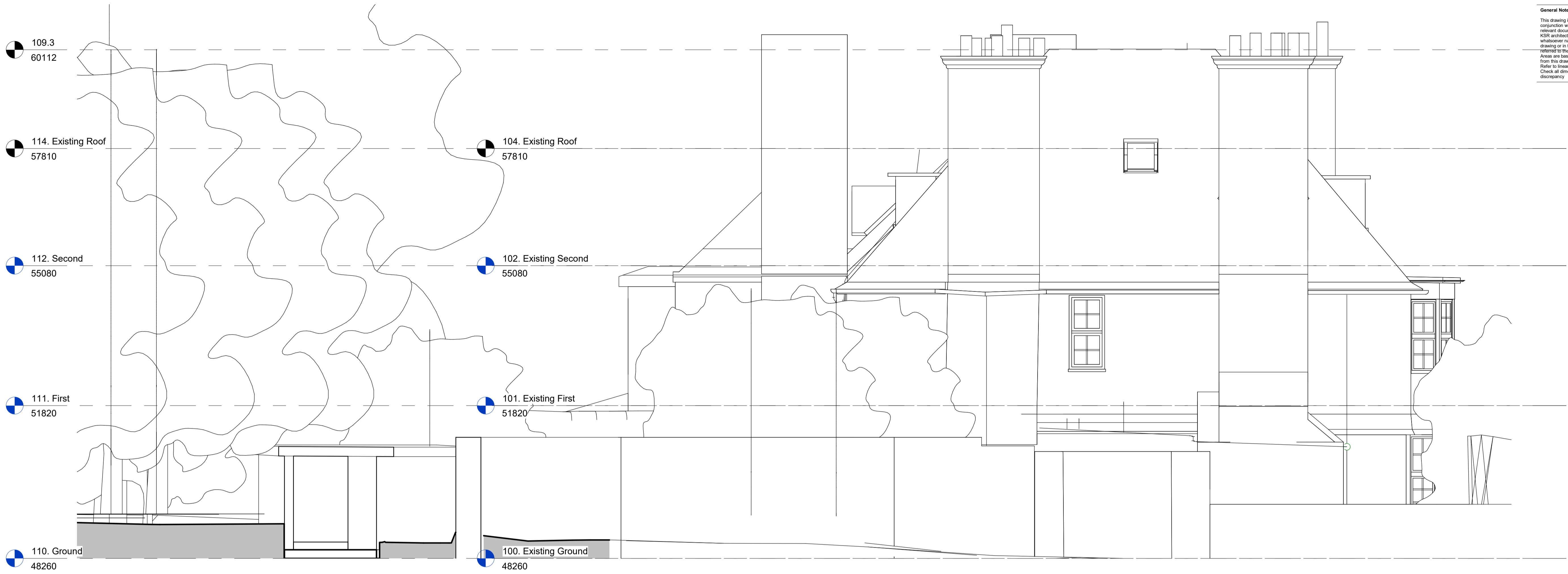
**General Notes**

This drawing is copyright of KSR architects. This drawing must be read in conjunction with the Designer's Risk Assessment, specification and all other relevant documentation and drawings.

KSR architects accept no liability for any expense, loss or damage of whatsoever nature and however arising from any variation made to this drawing or in the execution of the work to which it relates which has not been referred to them and their approval obtained.

Areas are based on unchecked survey and are approximate only. Do not scale from this drawing or the digital data, only figured dimensions are to be used. Refer to linear scale for guidance.

Check all dimensions on site prior to carrying out any works and advise any discrepancy



**1 Existing North Elevation**  
1 : 50



**2 Existing South Elevation**  
1 : 50

A	Planning	13/02/24	AB
Rev	Description	Date	By

Status:

**Planning**

**KSR ARCHITECTS & INTERIOR DESIGNERS**  
KSR Architects LLP  
14 Greenland Street  
London NW1 0ND  
info@ksrarchitects.com  
t: +44 (0)20 7662 5000  
www.ksrarchitects.com

Project:

**68 Elsworth Road**

Drawing Title:

Existing Elevations - Sides

Date of first issue: 13/02/24  
Scale: 1 : 50 @ A1

Drawn By: AB  
Checked By: DC  
© KSR Architects

Drawing No: 22059-X3-011  
Rev: A

0 1 2 4 m  
Scale 1:50 @A1