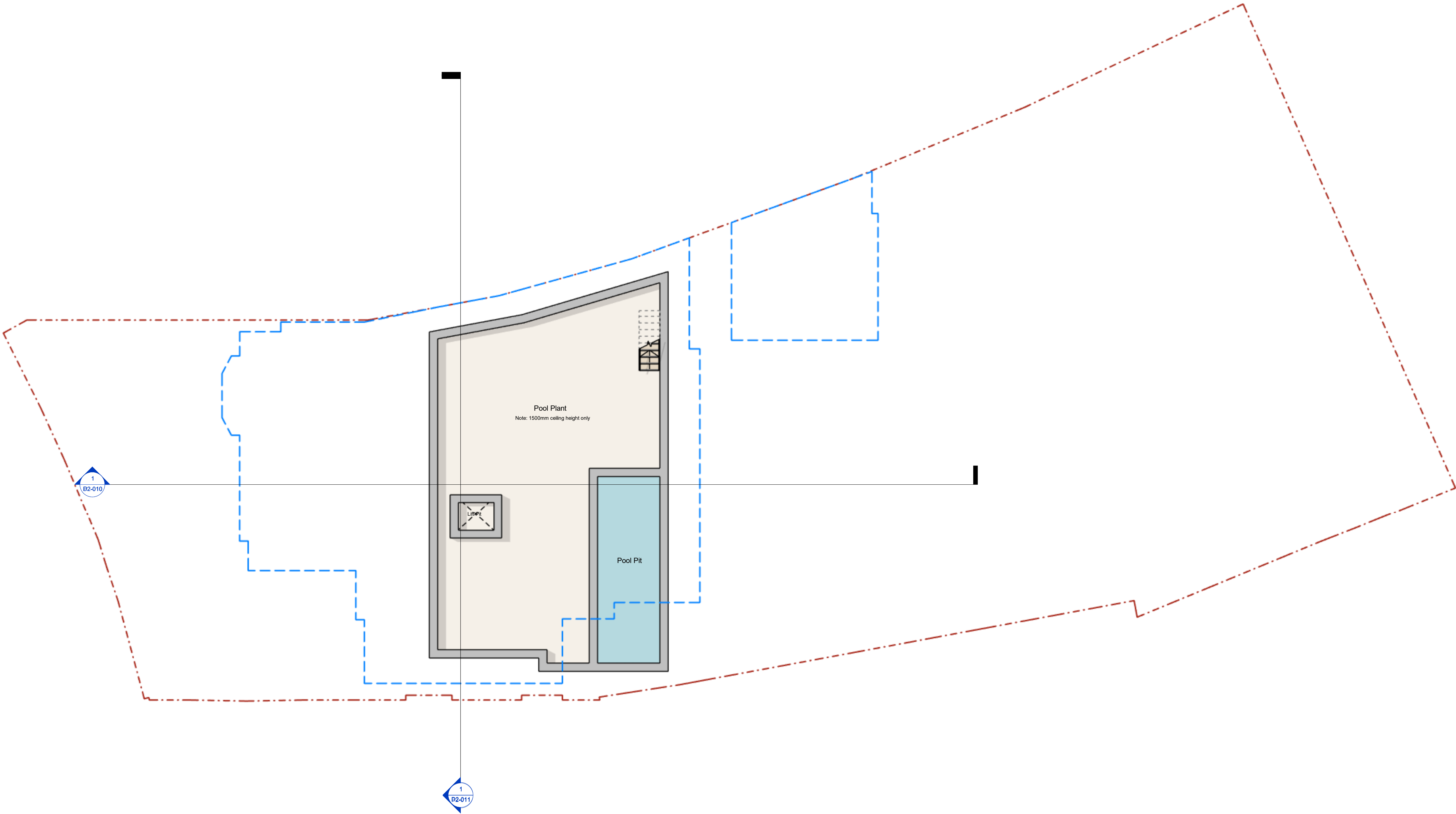


1

108. Lower Basement

1 : 100



General Notes

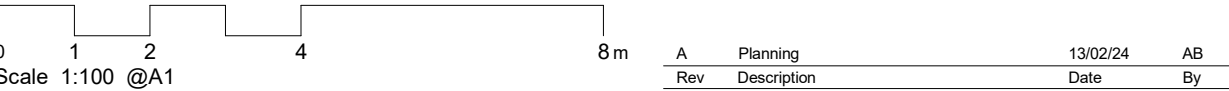
This drawing is copyright of KSR architects. This drawing must be read in conjunction with the Designer's Risk Assessment, specification and all other relevant documentation and drawings.

KSR architects accept no liability for any expense, loss or damage of whatsoever nature and however arising from any variation made to this drawing or in the execution of the work to which it relates which has not been referred to them and their approval obtained.

Areas are based on un-checked survey and are approximate only. Do not scale from this drawing or the digital data, only figured dimensions are to be used. Refer to listed scale for guidance.

Check all dimensions on site prior to carrying out any works and advise any discrepancy

— Above Ground Footprint



Status:
Planning
Scale:
1 : 100@A1

Date of first issue:
13/02/24

Drawn By:
AB

Checked By:
DC

© KSR Architects

KSR ARCHITECTS &
INTERIOR DESIGNERS

KSR Architects LLP
14 Grenville Street
London W1V 0ND

mail@ksrarchitects.com
t: +44 (0)20 7682 5000
www.ksrarchitects.com

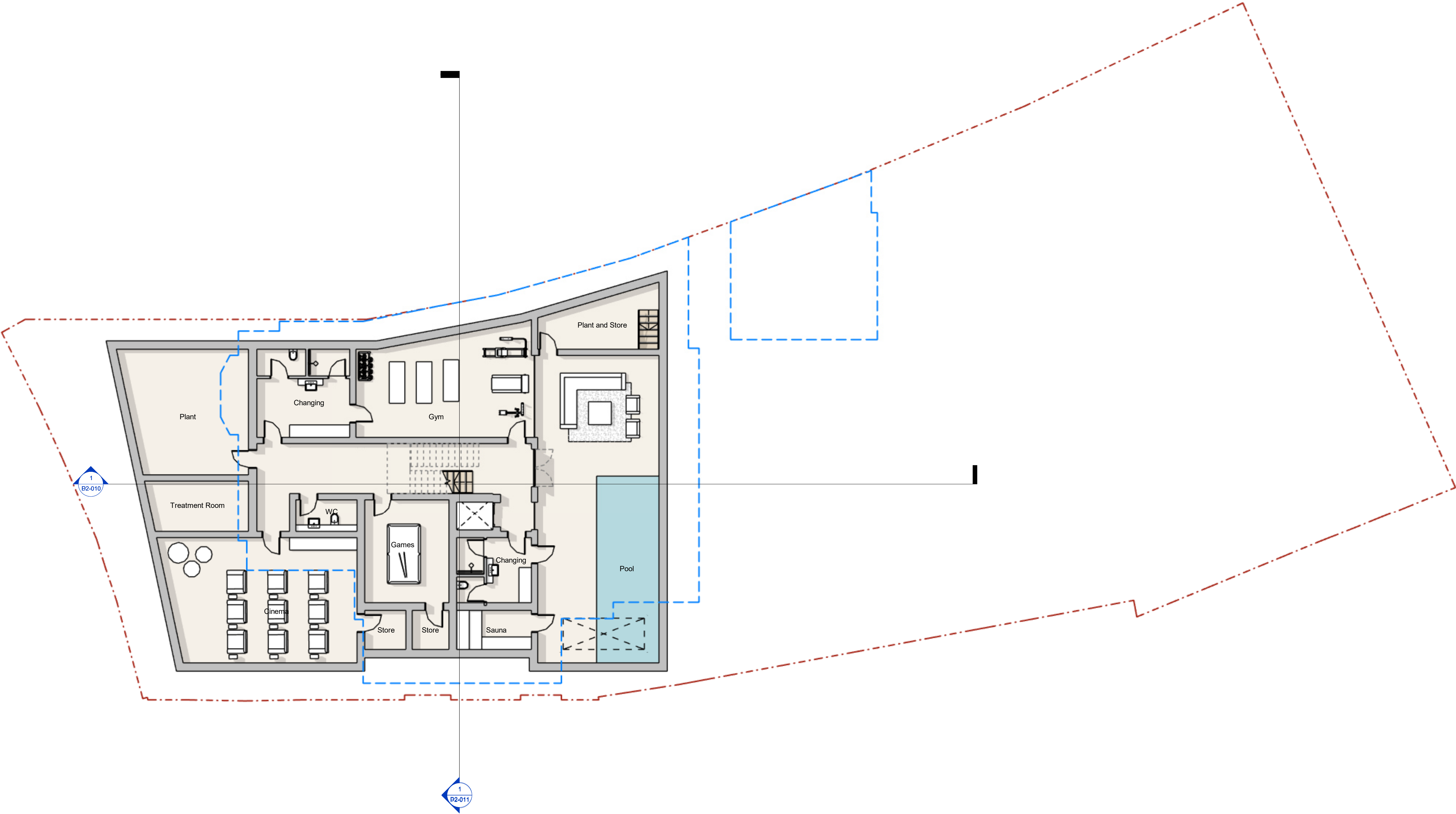
Drawing Title:
Planning Plans - Lower Basement

Drawing No:
22059-P1-108

Rev:
A

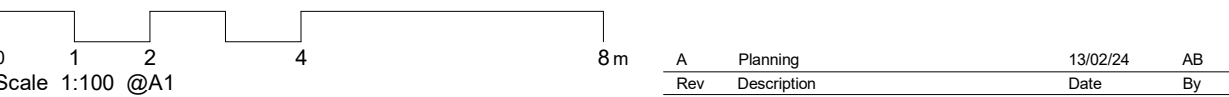
109. Basement

1 : 100



General Notes
This drawing is copyright of KSR architects. This drawing must be read in conjunction with the Designer's Risk Assessment, specification and all other relevant documentation and drawings.
KSR architects accept no liability for any expense, loss or damage of whatsoever nature and however arising from any variation made to this drawing or in the execution of the work to which it relates which has not been referred to them and their approval obtained.
Areas are based on un-checked survey and are approximate only. Do not scale from this drawing or the digital data, only figured dimensions are to be used. Refer to linear scale for guidance.
Check all dimensions on site prior to carrying out any works and advise any discrepancy

--- Above Ground Footprint



Status:
Planning
Scale:
1 : 100@A1

Project:
68 Elsworth Road

Date of first issue:
13/02/24

Drawn By:
AB

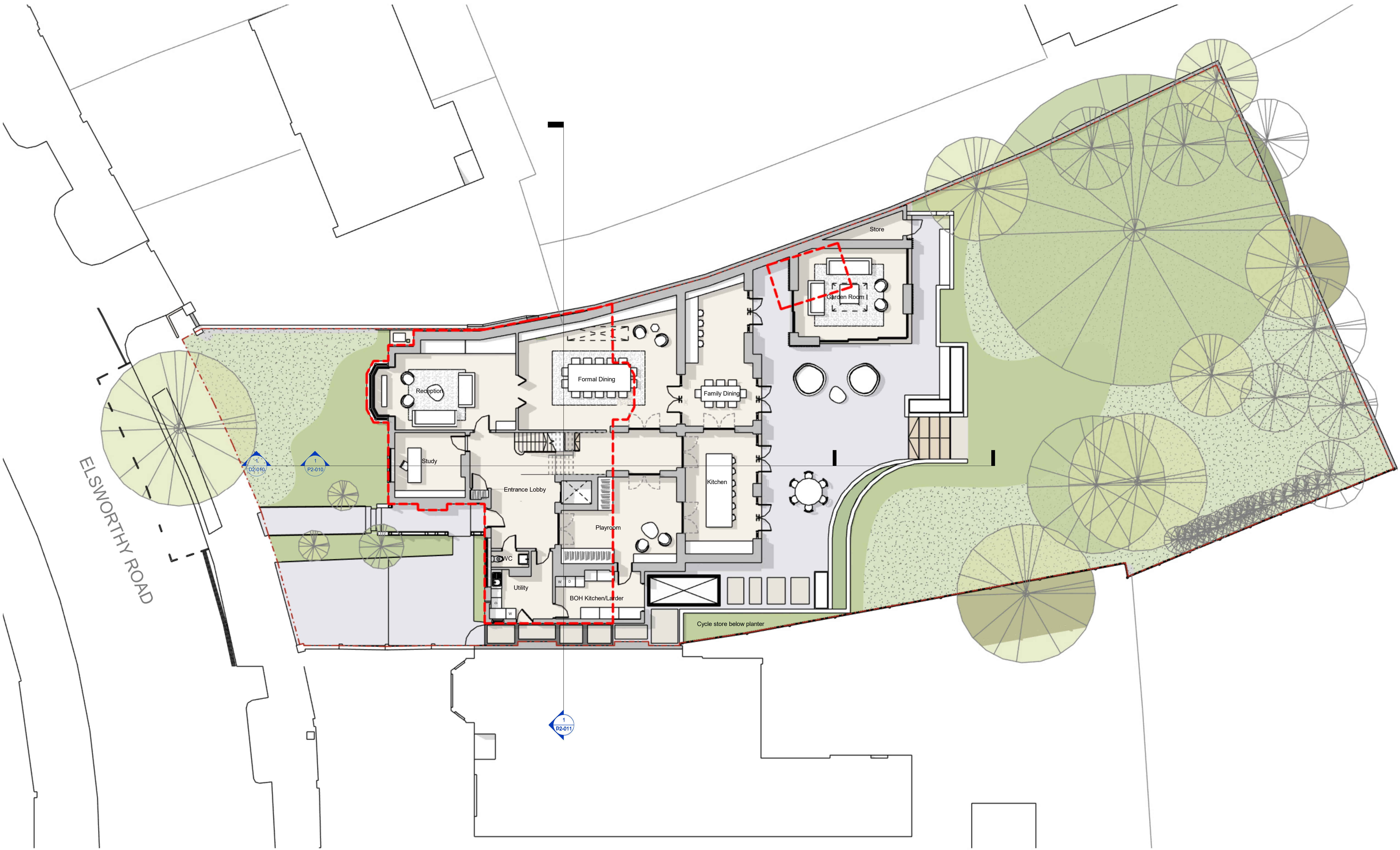
Checked By:
DC

Drawing No:
22059-P1-109

Rev:
A

KSR ARCHITECTS &
INTERIOR DESIGNERS
KSR Architects LLP
14 Overland Street
London NW1 0ND
t: +44 (0)20 7682 5000
m: 07939 898888
www.ksaripractice.com

Drawing Title:
Planning Plans - Basement



1 110. Ground Floor GA_100
1 : 100

General Notes

This drawing is copyright of KSR architects. This drawing must be read in conjunction with the Designer's Risk Assessment, specification and all other relevant documentation and drawings.
KSR architects accept no liability for any expense, loss or damage of whatsoever nature and however arising from any variation made to this drawing or in the execution of the work to which it relates which has not been referred to them and their approval obtained.
Areas are based on un-checked survey and are approximate only. Do not scale from this drawing or the digital data, only figured dimensions are to be used. Refer to linear scale for guidance.
Check all dimensions on site prior to carrying out any works and advise any discrepancy.

--- Existing House

0 1 2 4 8m
Scale 1:100 @A1

Status:
Planning
Scale:
1 : 100@A1

68 Elsworthy Road

Date of first issue:
13/02/24

Drawn By:
AB

Checked By:
DC

Drawing No:
22059-P1-110

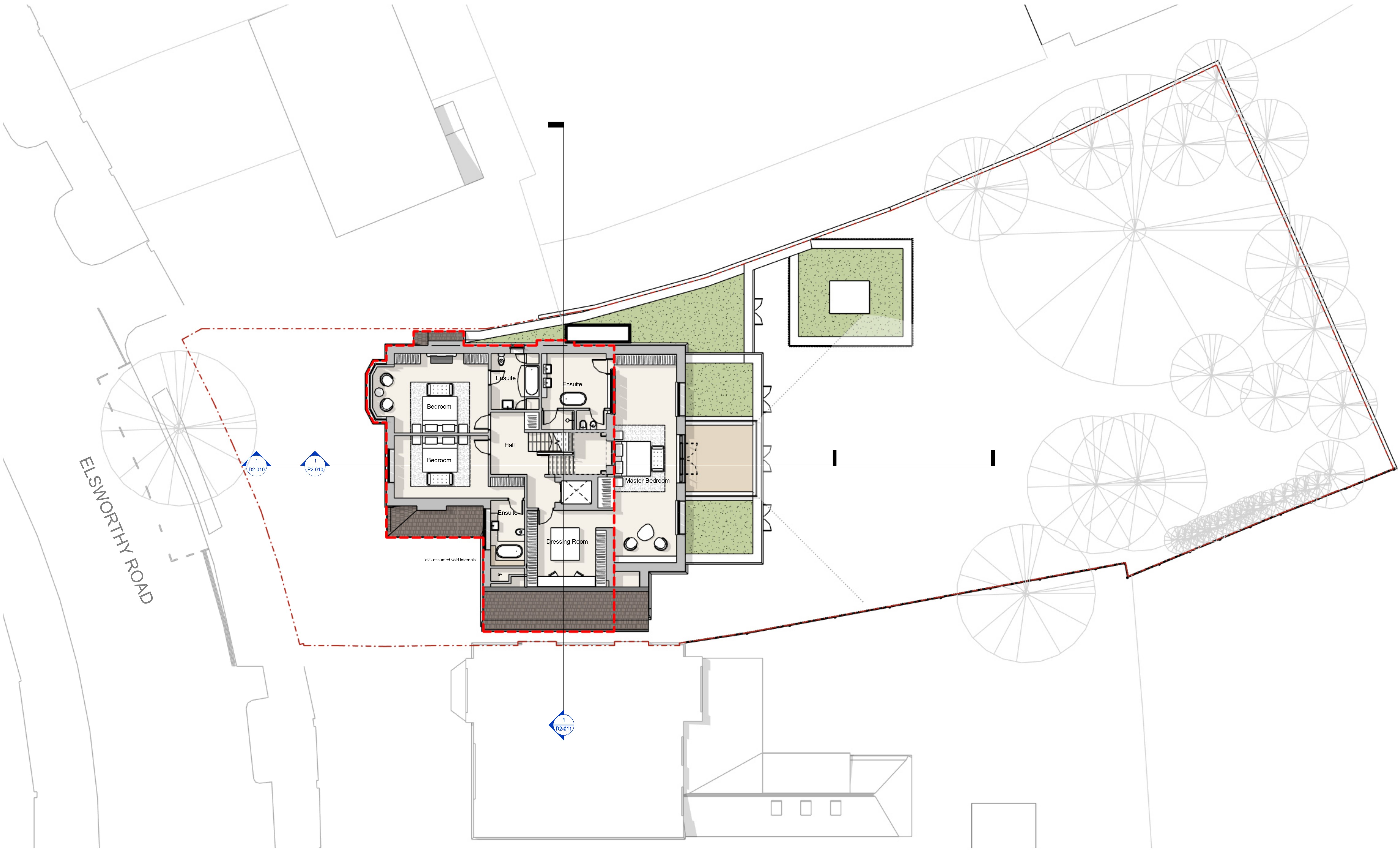
Rev:
A

KSR ARCHITECTS & INTERIOR DESIGNERS
KSR Architects LLP
14 Overland Street
London NW1 0ND
info@ksrarchitects.com
t: +44 (0)20 7682 5000
www.ksrarchitects.com

Planning Plans - Ground floor

Rev	Description	Date	By
A	Planning	13/02/24	AB

© KSR Architects



111. First Floor GA_100
1 : 100

General Notes

This drawing is copyright of KSR architects. This drawing must be read in conjunction with the Designer's Risk Assessment, specification and all other relevant documentation and drawings.
KSR architects accept no liability for any expense, loss or damage of whatsoever nature and however arising from any variation made to this drawing or in the execution of the work to which it relates which has not been referred to them and their approval obtained.
Areas are based on un-checked survey and are approximate only. Do not scale from this drawing or the digital data, only figured dimensions are to be used. Refer to linear scale for guidance.
Check all dimensions on site prior to carrying out any works and advise any discrepancy

--- Existing House

0 1 2 4 8m
Scale 1:100 @A1

Status:
Planning
Scale:
1 : 100@A1

Project:
68 Elsworthy Road

Date of first issue:
13/02/24

© KSR Architects

Drawn By:
AB

Checked By:
DC

Drawing No:
22059-P1-111

Rev:
A

KSR ARCHITECTS & INTERIOR DESIGNERS
KSR Architects LLP
14 Overland Street
London NW1 0ND
info@ksrarchitects.com
t: +44 (0)20 7682 5000
www.ksrarchitects.com

Drawing Title:
Planning Plans - First floor

112. Second Floor GA_100

1 : 100

General Notes
This drawing is copyright of KSR architects. This drawing must be read in conjunction with the Designer's Risk Assessment, specification and all other relevant documentation and drawings.
KSR architects accept no liability for any expense, loss or damage of whatsoever nature and however arising from any variation made to this drawing or in the execution of the work to which it relates which has not been referred to them and their approval obtained.
Areas are based on unchecked survey and are approximate only. Do not scale from this drawing or the digital data, only figured dimensions are to be used. Refer to linear scale for guidance.
Check all dimensions on site prior to carrying out any works and advise any discrepancy

Existing House

0 1 2 4 8m
Scale 1:100 @A1

Rev	Description	Date	By
A	Planning	13/02/24	AB

Status:
Planning
Scale:
1 : 100@A1

Project:
68 Elsworthy Road

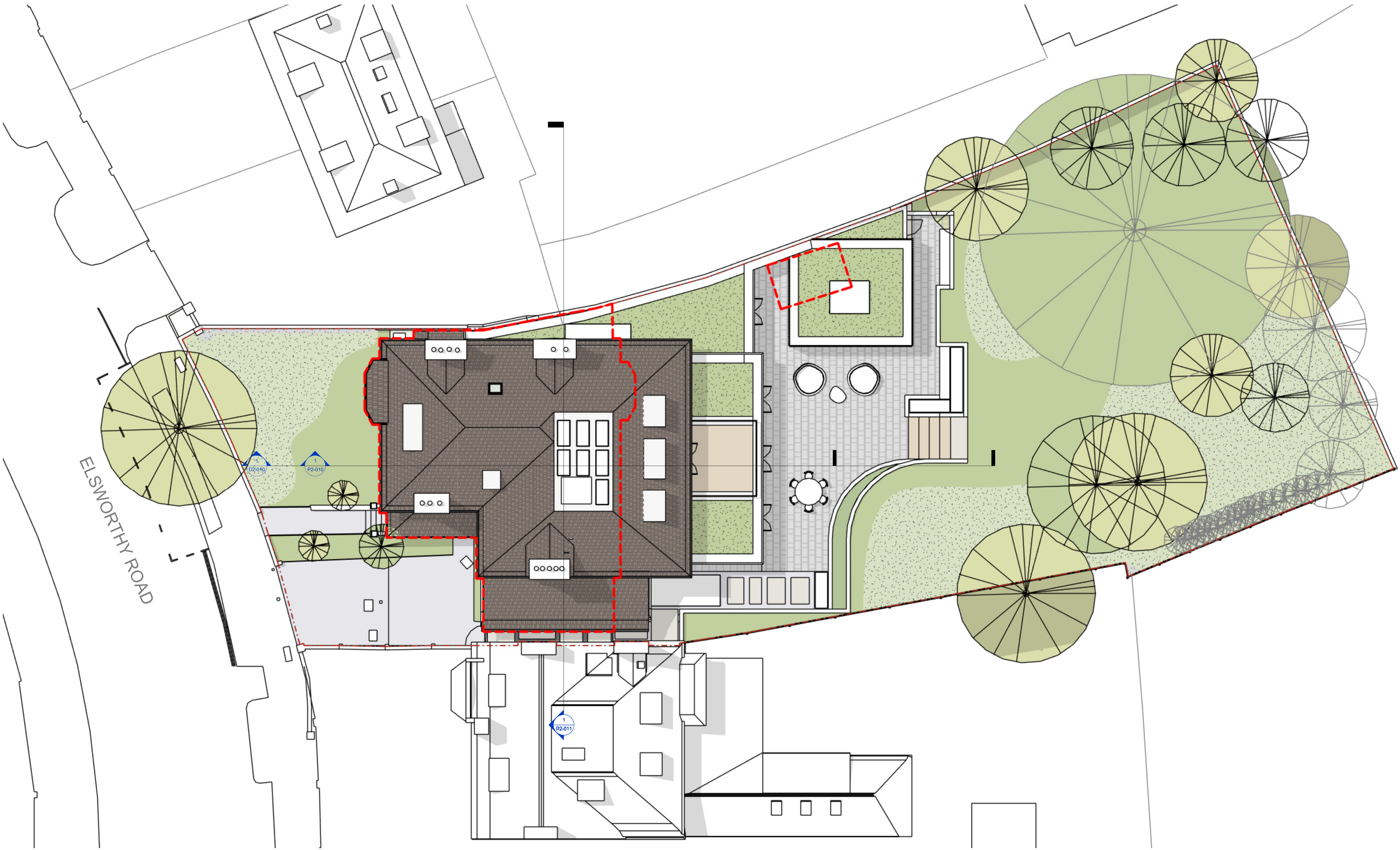
Date of first issue:
13/02/24
© KSR Architects

Drawn By:
AB
Checked By:
DC

Drawing No:
22059-P1-112
Rev:
A

Planning Plans - Second Floor

KSR ARCHITECTS &
INTERIOR DESIGNERS
KSR Architects LLP
14 Greenfield Street
London NW1 0ND
t: +44 (0)20 7682 5000
e: info@ksrarchitects.com
www.ksrarchitects.com



1 115. Roof GA_100
1 : 100

General Notes

This drawing is copyright of KSR architects. This drawing must be read in conjunction with the Designer's Risk Assessment, specification and all other relevant documentation and drawings.
KSR architects accept no liability for any expense, loss or damage of whatsoever nature and however arising from any variation made to this drawing or in the execution of the work to which it relates which has not been referred to them and their approval obtained.
Areas are based on un-checked survey and are approximate only. Do not scale from this drawing or the digital data, only figured dimensions are to be used. Refer to linear scale for guidance.
Check all dimensions on site prior to carrying out any works and advise any discrepancy

--- Existing House

0 1 2 4 8m
Scale 1:100 @A1

Rev	Description	Date	By
A	Planning	13/02/24	AB

Status:
Planning
Scale:
1 : 100@A1
Project:
68 Elsworthy Road
Date of first issue:
13/02/24
© KSR Architects

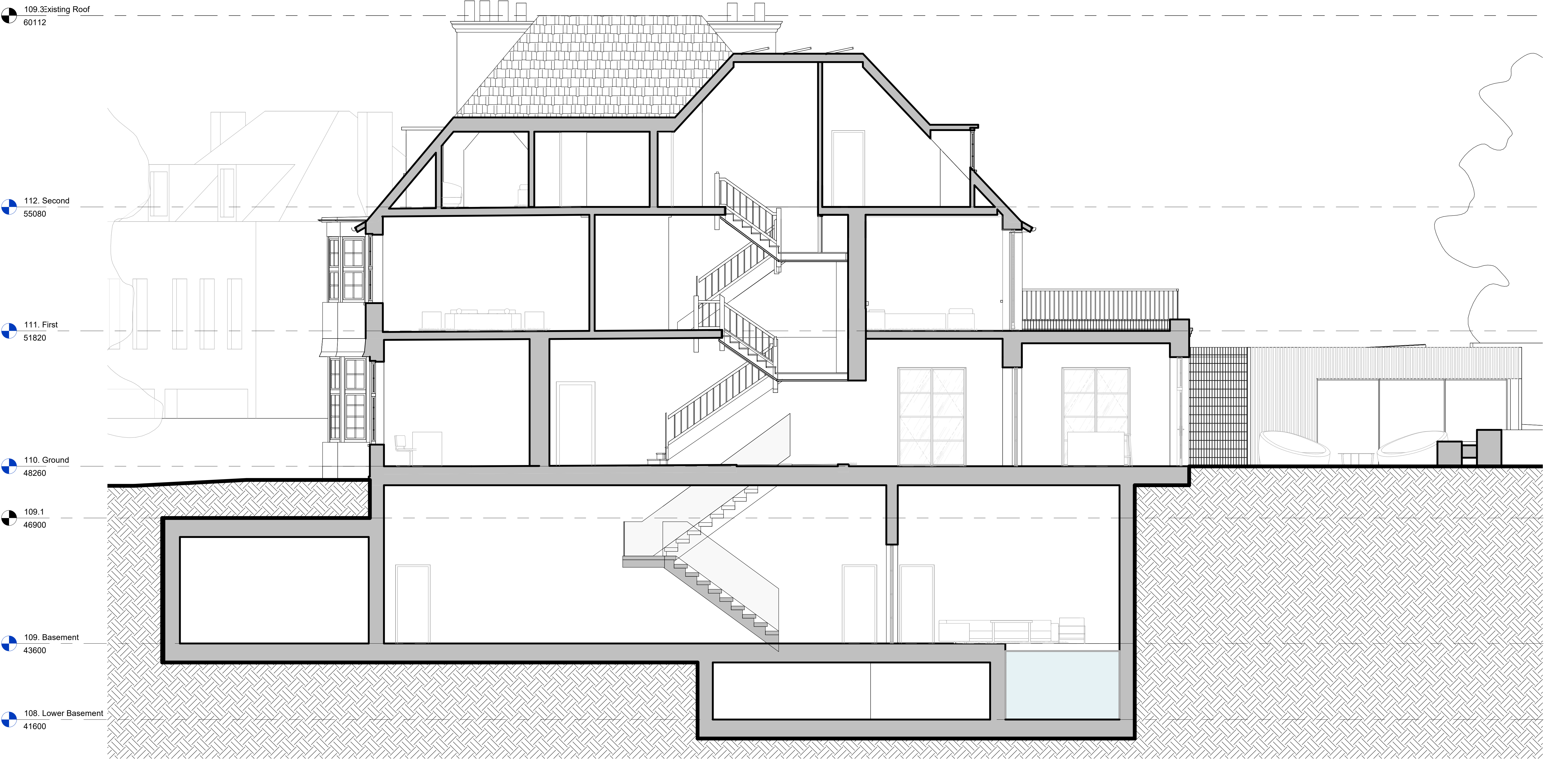
Drawn By:
AB
Checked By:
DC

Drawing No:
22059-P1-114

Rev:
A

KSR ARCHITECTS & INTERIOR DESIGNERS
KSR Architects LLP
14 Overland Street
London NW1 0ND
info@ksrarchitects.com
t: +44 (0)20 7682 5000
www.ksrarchitects.com

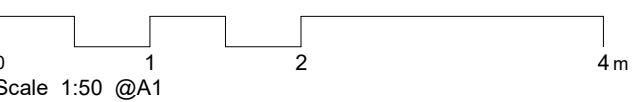
Drawing Title:
Planning Plans - Roof



1 Proposed Section AA
1 : 50

General Notes

This drawing is copyright of KSR architects. This drawing must be read in conjunction with the Designer's Risk Assessment, specification and all other relevant documentation and drawings.
KSR architects accept no liability for any expense, loss or damage of whatsoever nature and however arising from any variation made to this drawing or in the execution of this work to which it relates which has not been referred to them and their approval obtained.
Areas are based on un-checked survey and are approximate only. Do not scale from this drawing or the digital data, only figured dimensions are to be used. Refer to linear scale for guidance.
Check all dimensions on site prior to carrying out any works and advise any discrepancy



Rev	Description	Date	By
A	Planning	13/02/24	AB

Status:

Planning

Scale:
1 : 50@A1

Project:

68 Elsworth Road

Date of first issue:

13/02/24

© KSR Architects

Drawn By:

AB

Checked By:

DC

KSR ARCHITECTS &
INTERIOR DESIGNERS
KSR Architects LLP
14 Downland Street
London W1W 0ND
info@ksrarchitects.com
t: +44 (0)20 7682 5000
www.ksrarchitects.com

Drawing Title:

Planning Sections - Section AA

Drawing No:

22059-P2-010

Rev:

A

109.3 Existing Roof
60112

112. Second
55080

111. First
51820

110. Ground
48260

109.1
46900

109. Basement
43600

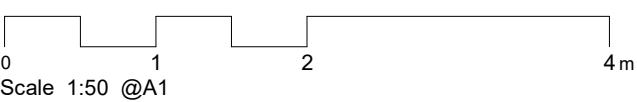
108. Lower Basement
41600

1 Proposed Section BB

1 : 50

General Notes

This drawing is copyright of KSR architects. This drawing must be read in conjunction with the Designer's Risk Assessment, specification and all other relevant documentation and drawings.
KSR architects accept no liability for any expense, loss or damage of whatsoever nature and however arising from any variation made to this drawing or in the execution of the work to which it relates which has not been referred to them and their approval obtained.
Areas are based on unchecked survey and are approximate only. Do not scale from this drawing or the digital data, only figured dimensions are to be used. Refer to linear scale for guidance.
Check all dimensions on site prior to carrying out any works and advise any discrepancy



Rev	Description	Date	By
A	Planning	13/02/24	AB

Status:

Planning

Scale:
1 : 50 @A1

Project:

68 Elsworth Road

Date of first issue:

13/02/24

© KSR Architects

Drawn By:

AB

Checked By:

DC

KSR ARCHITECTS &
INTERIOR DESIGNERS
KSR Architects LLP
14 Overland Street
London NW1 0ND
info@ksrarchitects.com
t: +44 (0)20 7682 5000
www.ksrarchitects.com

Drawing Title:

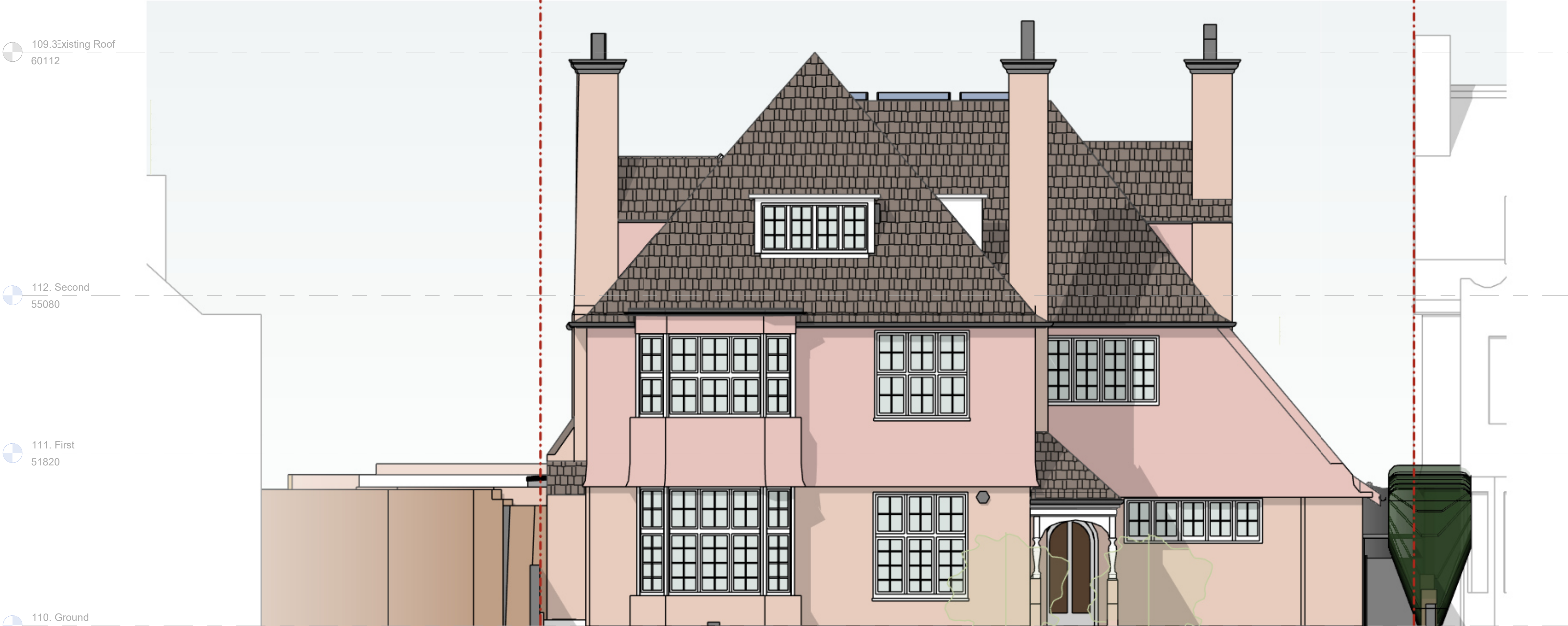
Planning Sections - Section BB

Drawing No:

22059-P2-011

Rev:

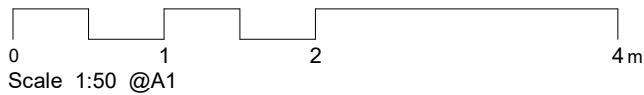
A



1 Proposed Front Elevation
1 : 50



2 Proposed Rear Elevation
1 : 50



General Notes

This drawing is copyright of KSR architects. This drawing must be read in conjunction with the Designer's Risk Assessment, specification and all other relevant documentation and drawings.

KSR architects accept no liability for any expense, loss or damage of whatsoever nature and however arising from any variation made to this drawing or in the execution of the work to which it relates which has not been referred to them and their approval obtained.

Areas are based on unchecked survey and are approximate only. Do not scale from this drawing or the digital data, only figured dimensions are to be used. Refer to linear scale for guidance.

Check all dimensions on site prior to carrying out any works and advise any discrepancy

A	Planning	13/02/24	AB
Rev	Description	Date	By
Status:			

Planning

KSR ARCHITECTS & INTERIOR DESIGNERS

KSR Architects LLP
14 Greenland Street
London NW1 0ND

info@ksrarchitects.com
t: +44 (0)20 7882 5000
www.ksrarchitects.com

Project:

68 Elsworth Road

Drawing Title:

Planning Elevations - Front and Back

Date of first issue: 13/02/24
Scale: 1 : 50 @ A1

Drawn By: AB
Checked By: DC
© KSR Architects

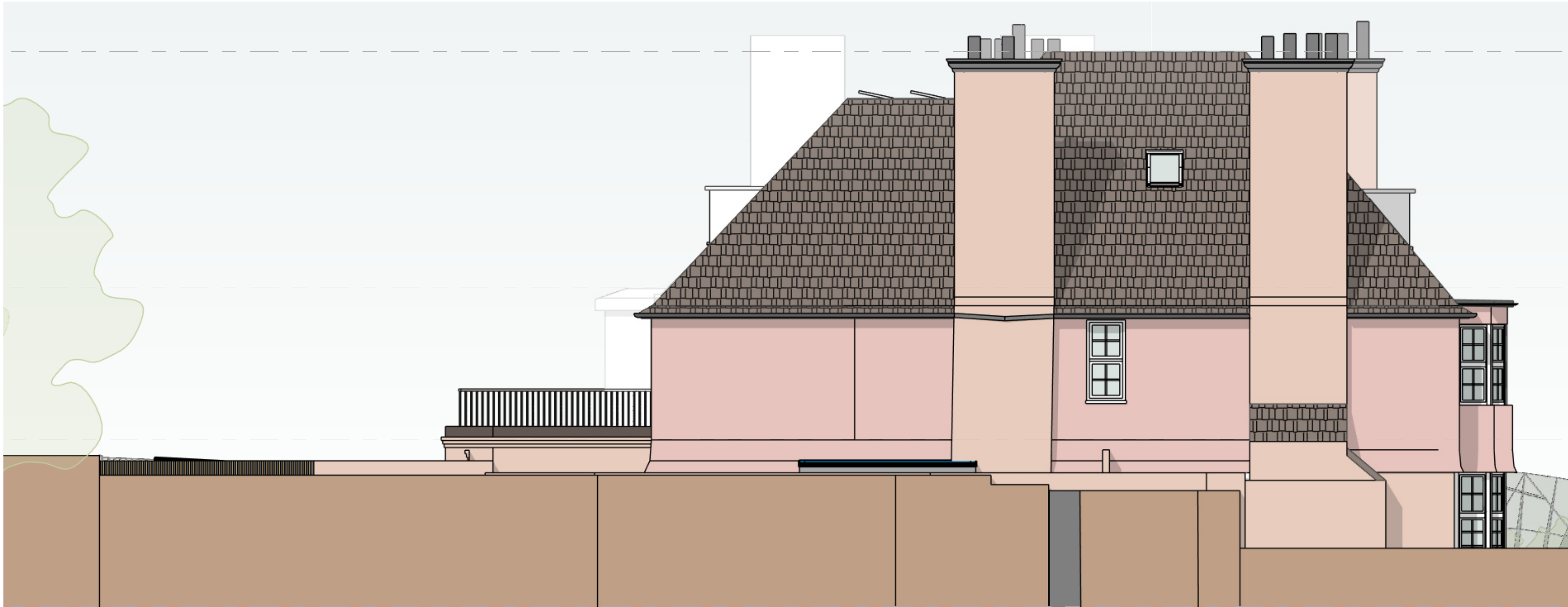
Drawing No: **22059-P3-010**
Rev: **A**

109.3Existing Roof
60112

112. Second
55080

111. First
51820

110. Ground
48260



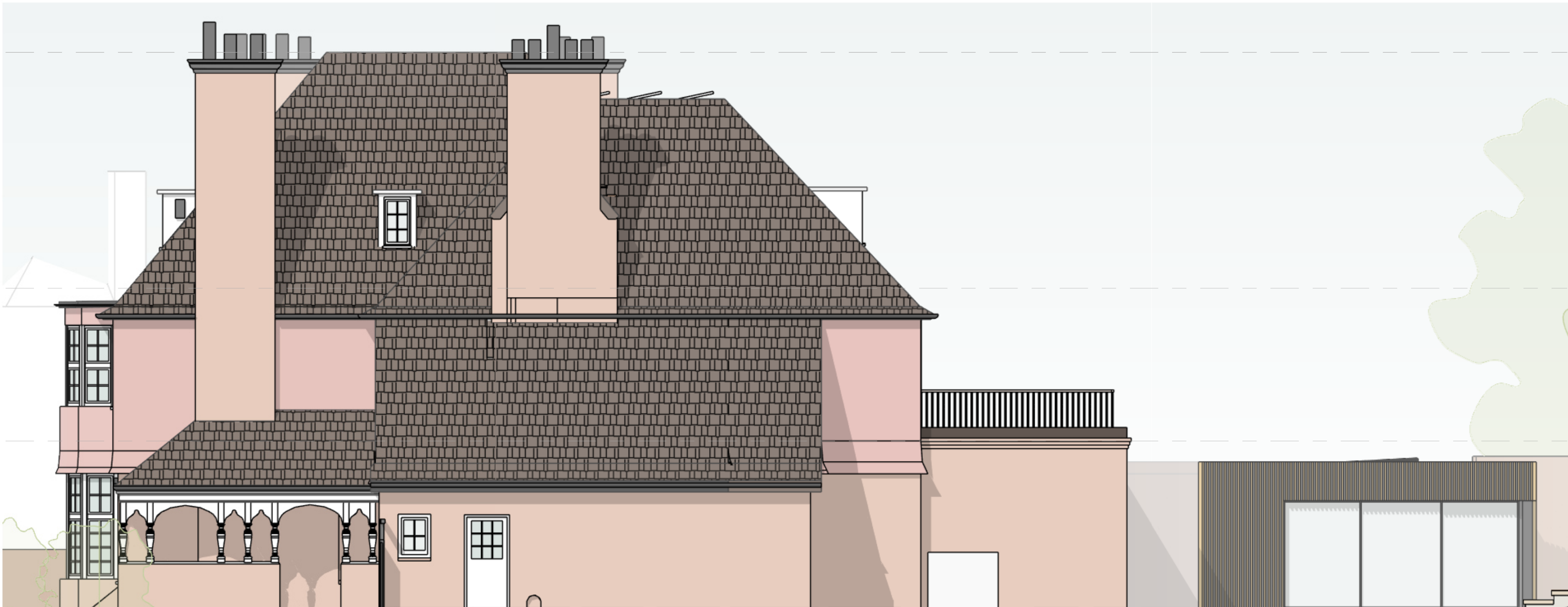
1 **Proposed North Elevation**
1 : 50

109.3Existing Roof
60112

112. Second
55080

111. First
51820

110. Ground
48260



2 **Proposed South Elevation**
1 : 50

0 1 2 4m
Scale 1:50 @A1

General Notes

This drawing is copyright of KSR architects. This drawing must be read in conjunction with the Designer's Risk Assessment, specification and all other relevant documentation and drawings.

KSR architects accept no liability for any expense, loss or damage of whatsoever nature and however arising from any variation made to this drawing or in the execution of the work to which it relates which has not been referred to them and their approval obtained.

Areas are based on unchecked survey and are approximate only. Do not scale from this drawing or the digital data, only figured dimensions are to be used. Refer to linear scale for guidance.

Check all dimensions on site prior to carrying out any works and advise any discrepancy

A	Planning	13/02/24	AB
Rev	Description	Date	By
Status:			

Planning

KSR ARCHITECTS &
INTERIOR DESIGNERS

KSR Architects LLP
14 Greenland Street
London NW1 0ND

info@ksrarchitects.com
t: +44 (0)20 7692 5000
www.ksrarchitects.com

Project:

68 Elsworth Road

Drawing Title:

Planning Elevations - Sides

Date of first issue:	Scale:
13/02/24	1 : 50 @ A1

Drawn By:	Checked By:	© KSR Architects
AB	DC	

Drawing No:	Rev:
22059-P3-011	A

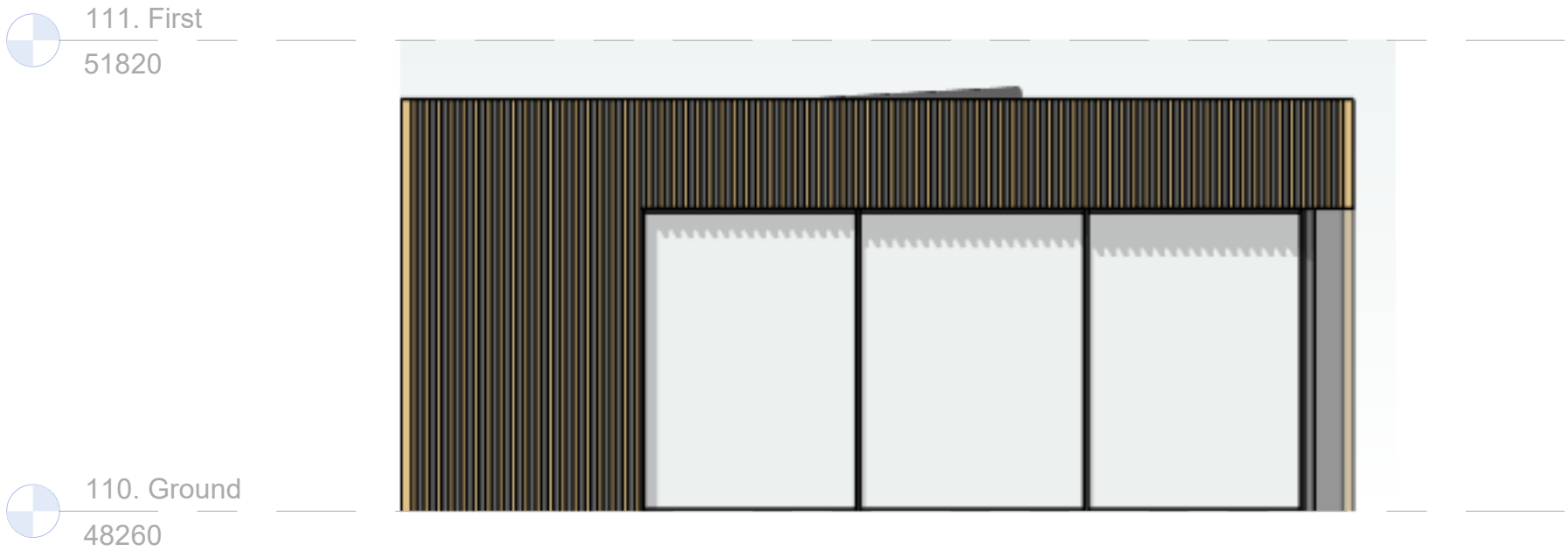
General Notes

This drawing is copyright of KSR architects. This drawing must be read in conjunction with the Designer's Risk Assessment, specification and all other relevant documentation and drawings.

KSR architects accept no liability for any expense, loss or damage of whatsoever nature and however arising from any variation made to this drawing or in the execution of the work to which it relates which has not been referred to them and their approval obtained.

Areas are based on unchecked survey and are approximate only. Do not scale from this drawing or the digital data, only figured dimensions are to be used. Refer to linear scale for guidance.

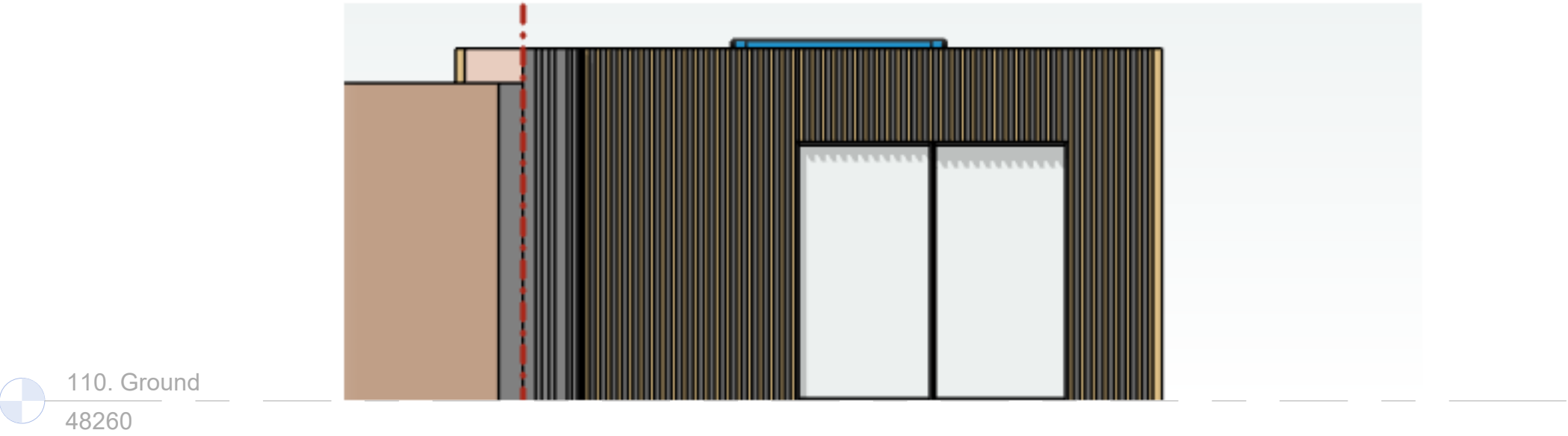
Check all dimensions on site prior to carrying out any works and advise any discrepancy



1 Garden Pavillion Front Elevation
1 : 50



2 Garden Pavillion Side Elevation
1 : 50



3 Garden Pavillion Elevation Facing House
1 : 50

A	Planning	13/02/24	AB
Rev	Description	Date	By

Status:

Planning

KSR ARCHITECTS &
INTERIOR DESIGNERS

KSR Architects LLP
14 Greenland Street
London NW1 0ND

info@ksrarchitects.com
t: +44 (0)20 7692 5000
www.ksrarchitects.com

Project:

68 Elsworthy Road

Drawing Title:

Planning Elevations - Garden Pavillion

Date of first issue: 13/02/24
Scale: 1 : 50 @ A1

Drawn By: AB
Checked By: DC
© KSR Architects

Drawing No: 22059-P3-012
Rev: A

