

1

**110. Ground Floor Demolition GA\_100**  
1 : 100

**General Notes**

This drawing is copyright of KSR architects. This drawing must be read in conjunction with the Designer's Risk Assessment, specification and all other relevant documentation and drawings.  
KSR architects accept no liability for any expense, loss or damage of whatsoever nature and however arising from any variation made to this drawing or in the execution of the work to which it relates which has not been referred to them and their approval obtained.  
Areas are based on unchecked survey and are approximate only. Do not scale from this drawing or the digital data, only figured dimensions are to be used. Refer to linear scale for guidance.  
Check all dimensions on site prior to carrying out any works and advise any discrepancy

Demolished

**Status:**  
**Planning**  
Scale:  
1 : 100@A1

**Project:**  
**68 Elsworthy Road**

Date of first issue:  
**13/02/24**  
© KSR Architects

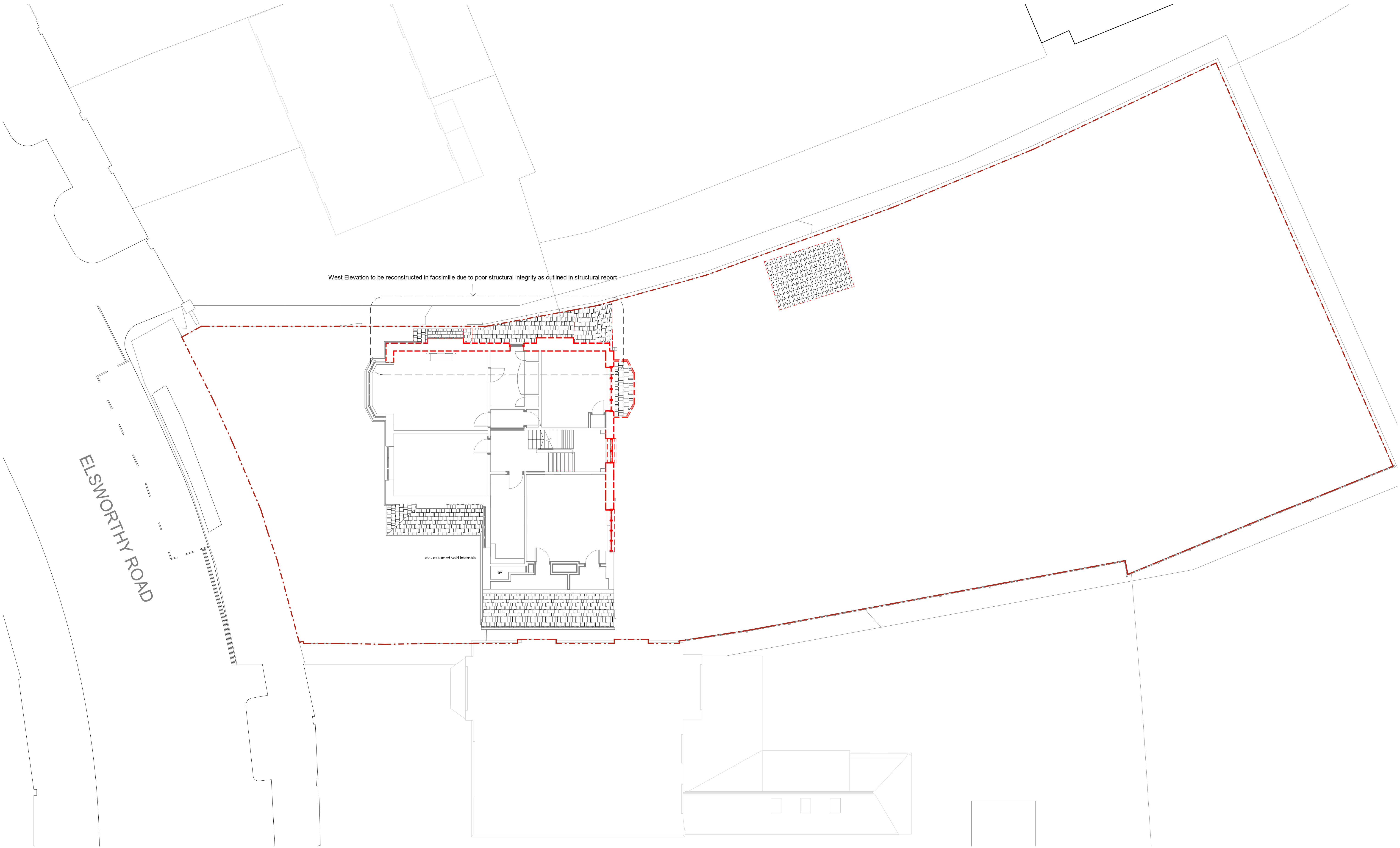
Drawn By:  
**AB**

Checked By:  
**DC**

Drawing No:	Rev:
<b>22059-D1-110</b>	<b>A</b>

**KSR ARCHITECTS & INTERIOR DESIGNERS**  
KSR Architects LLP  
14 Overland Street  
London W1W 0ND  
m@ksrarchitects.com  
t: +44 (0)20 7682 5000  
www.ksrarchitects.com

Drawing Title:  
**Demolition Plans - Ground floor**



**111. First Floor Demolition GA\_100**  
1 : 100

**General Notes**

This drawing is copyright of KSR architects. This drawing must be read in conjunction with the Designer's Risk Assessment, specification and all other relevant documentation and drawings.  
KSR architects accept no liability for any expense, loss or damage of whatsoever nature and however arising from any variation made to this drawing or in the execution of the work to which it relates which has not been referred to them and their approval obtained.  
Areas are based on un-checked survey and are approximate only. Do not scale from this drawing or the digital data, only figured dimensions are to be used. Refer to listed scale for guidance.  
Check all dimensions on site prior to carrying out any works and advise any discrepancy

**Demolished**

**Status:**  
**Planning**

**Scale:**  
1 : 100@A1

**Project:**  
68 Elsworthy Road

**Date of first issue:**  
13/02/24

**Drawn By:**  
AB

**Checked By:**  
DC

**Drawing No:**  
22059-D1-111

**Rev:**  
A

**KSR ARCHITECTS & INTERIOR DESIGNERS**

KSR Architects LLP  
14 Greenfield Street  
London NW1 0ND

mail@ksrarchitects.com  
t: +44 (0)20 7682 5000  
www.ksrarchitects.com

**Demolition Plans - First floor**

Scale 1:100 @A1

0 1 2 4 8m

Rev	Description	Date	By
A	Planning	13/02/24	AB

© KSR Architects

1 112. Second Floor Demolition GA\_100

1 : 100

West Elevation to be reconstructed in facsimilie due to poor structural integrity as outlined in structural report

av - assumed void internals

**General Notes**  
This drawing is copyright of KSR architects. This drawing must be read in conjunction with the Designer's Risk Assessment, specification and all other relevant documentation and drawings.  
KSR architects accept no liability for any expense, loss or damage of whatsoever nature and however arising from any variation made to this drawing or in the execution of the work to which it relates which has not been referred to them and their approval obtained.  
Areas are based on unchecked survey and are approximate only. Do not scale from this drawing or the digital data, only figured dimensions are to be used. Refer to linear scale for guidance.  
Check all dimensions on site prior to carrying out any works and advise any discrepancy

 Demolished

0 1 2 4 8m  
Scale 1:100 @A1

A	Planning	13/02/24	AB
Rev	Description	Date	By

Status:  
**Planning**  
Scale:  
1 : 100@A1

Project:  
**68 Elsworthy Road**

Date of first issue:  
**13/02/24**

Drawn By:  
**AB**

Checked By:  
**DC**

© KSR Architects

**KSR** ARCHITECTS &  
INTERIOR DESIGNERS  
KSR Architects LLP  
14 Grenville Street  
London W1V 0ND  
m@ksrarchitects.com  
t: +44 (0)20 7682 5000  
www.ksrarchitects.com

Drawing Title:

Demolition Plans - Second Floor

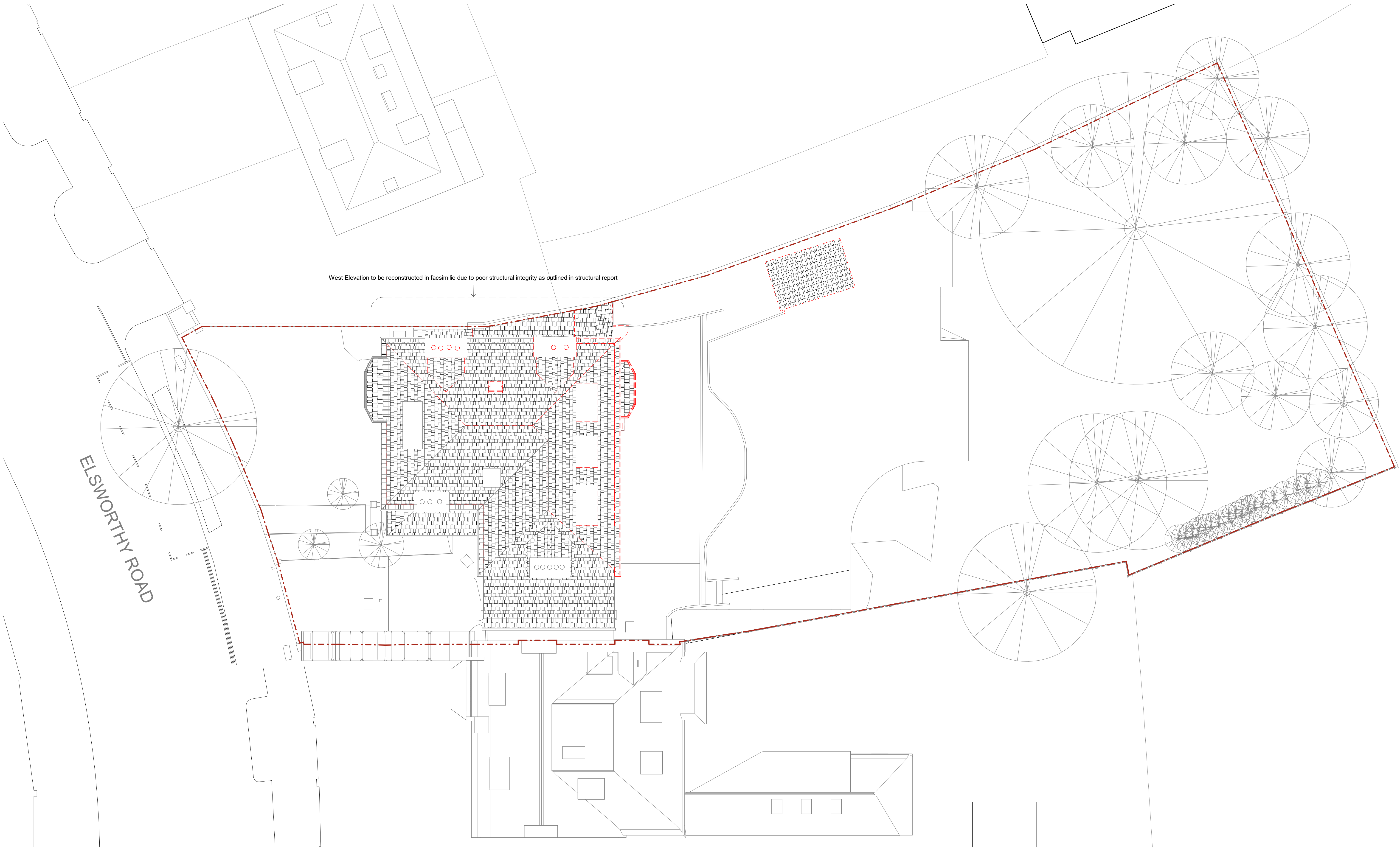
Drawing No:

**22059-D1-112**

Rev:

**A**





1 115. Roof Demolition GA\_100  
1 : 100

**General Notes**  
This drawing is copyright of KSR architects. This drawing must be read in conjunction with the Designer's Risk Assessment, specification and all other relevant documentation and drawings.  
KSR architects accept no liability for any expense, loss or damage of whatsoever nature and however arising from any variation made to this drawing or in the execution of the work to which it relates which has not been referred to them and their approval obtained.  
Areas are based on un-checked survey and are approximate only. Do not scale from this drawing or the digital data, only figured dimensions are to be used. Refer to linear scale for guidance.  
Check all dimensions on site prior to carrying out any works and advise any discrepancy

 Demolished

0 1 2 4 8m  
Scale 1:100 @A1

A	Planning	13/02/24	AB
Rev	Description	Date	By

Status:  
**Planning**  
Scale:  
1 : 100@A1

Project:  
**68 Elsworthy Road**

Date of first issue:  
**13/02/24**

Drawn By:  
**AB**

Checked By:  
**DC**

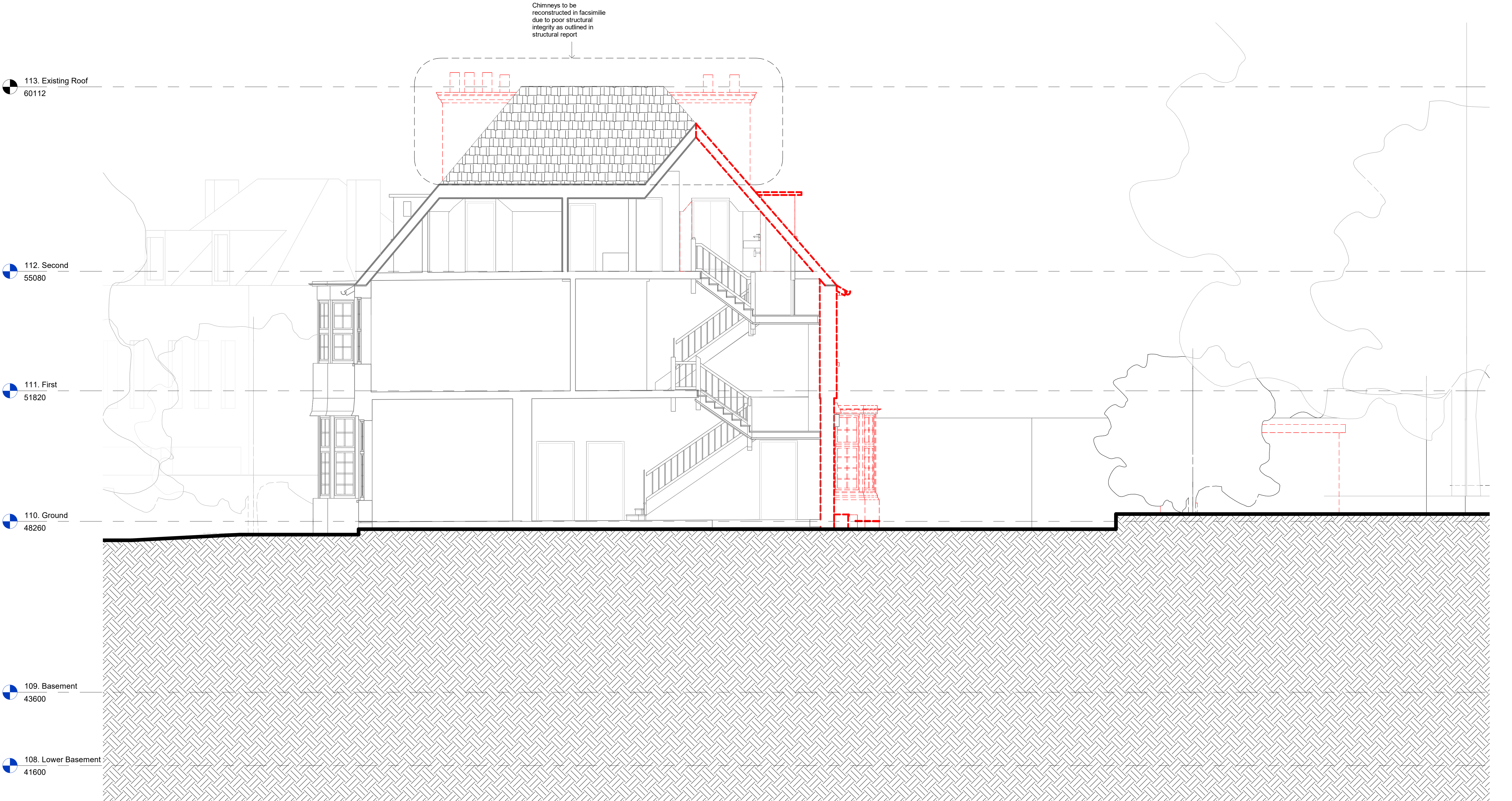
Drawing No:  
**22059-D1-114**

Rev:  
**A**

**KSR** ARCHITECTS &  
INTERIOR DESIGNERS  
KSR Architects LLP  
14 Greenfield Street  
London NW1 0ND  
info@ksrarchitects.com  
t: +44 (0)20 7682 5000  
www.ksrarchitects.com

Drawing Title:  
**Demolition Plans - Roof**





1 Demolition Section AA  
1 : 50

**General Notes**

This drawing is copyright of KSR architects. This drawing must be read in conjunction with the Designer's Risk Assessment, specification and all other relevant documentation and drawings.  
KSR architects accept no liability for any expense, loss or damage of whatsoever nature and however arising from any variation made to this drawing or in the execution of the work to which it relates which has not been referred to them and their approval obtained.  
Areas are based on unchecked survey and are approximate only. Do not scale from this drawing or the digital data, only figured dimensions are to be used. Refer to linear scale for guidance.  
Check all dimensions on site prior to carrying out any works and advise any discrepancy

Status:  
**Planning**

Scale:  
1 : 50@A1

Project:  
**68 Elsworth Road**

Date of first issue:  
13/02/24

© KSR Architects

Drawn By:  
AB

Checked By:  
DC

Drawing No:  
**22059-D2-010**

Rev:  
**A**

KSR ARCHITECTS & INTERIOR DESIGNERS

KSR Architects LLP  
14 Overland Street  
London W1W 0ND

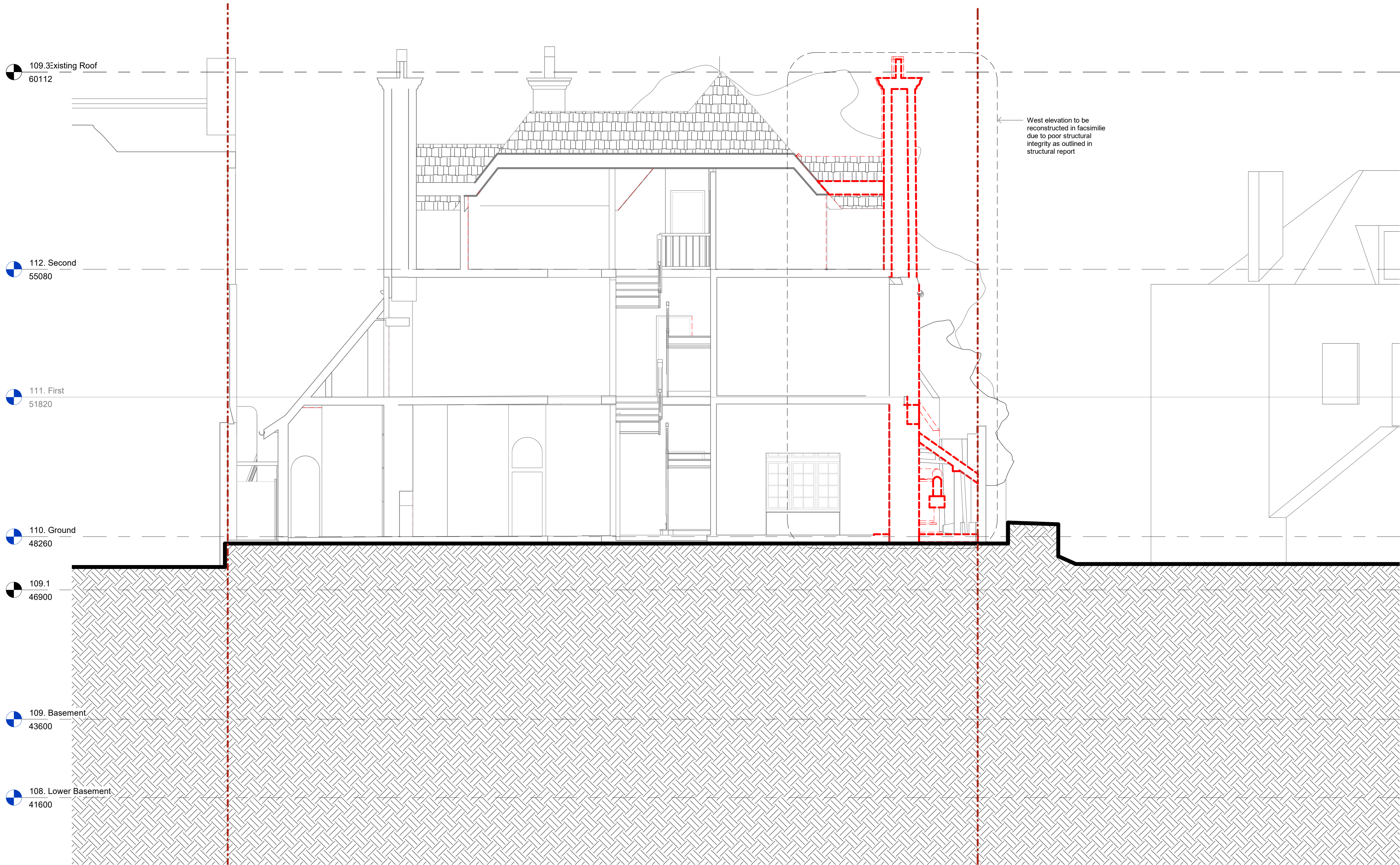
info@ksrarchitects.com  
t: +44 (0)20 7682 5000  
www.ksrarchitects.com

Demolition Sections - Section AA

0 1 2 4 m

Scale 1:50 @A1

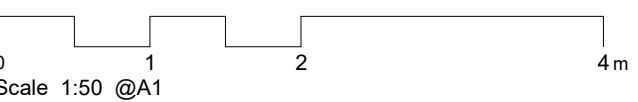
Rev	Description	Date	By
A	Planning	13/02/24	AB



**1 Demolition Section BB**  
1 : 50

**General Notes**

This drawing is copyright of KSR architects. This drawing must be read in conjunction with the Designer's Risk Assessment, specification and all other relevant documentation and drawings.  
KSR architects accept no liability for any expense, loss or damage of whatsoever nature and however arising from any variation made to this drawing or in the execution of the work to which it relates which has not been referred to them and their approval obtained.  
Areas are based on unchecked survey and are approximate only. Do not scale from this drawing or the digital data, only figured dimensions are to be used. Refer to linear scale for guidance.  
Check all dimensions on site prior to carrying out any works and advise any discrepancy



A		Planning	13/02/24	AB
Rev	Description	Date	By	

**Status:**

**Planning**

Scale:  
1 : 50@A1

Project:

**68 Elsworth Road**

Date of first issue:

13/02/24

© KSR Architects

Drawn By:

AB

Checked By:

DC

**KSR** ARCHITECTS &  
INTERIOR DESIGNERS  
KSR Architects LLP  
14 Greenford Street  
London W10 0ND  
m@kserarchitects.com  
t +44 (0)20 7682 5000  
www.kserarchitects.com

Drawing Title:

Demolition Sections - Section BB

Drawing No:

**22059-D2-011**

Rev:

**A**