

All omissions and discrepancies to be reported to the architect immediately.

Copyright:
Green & Teggin Architects Limited.
28 Lausanne Road, London SE15 2HU

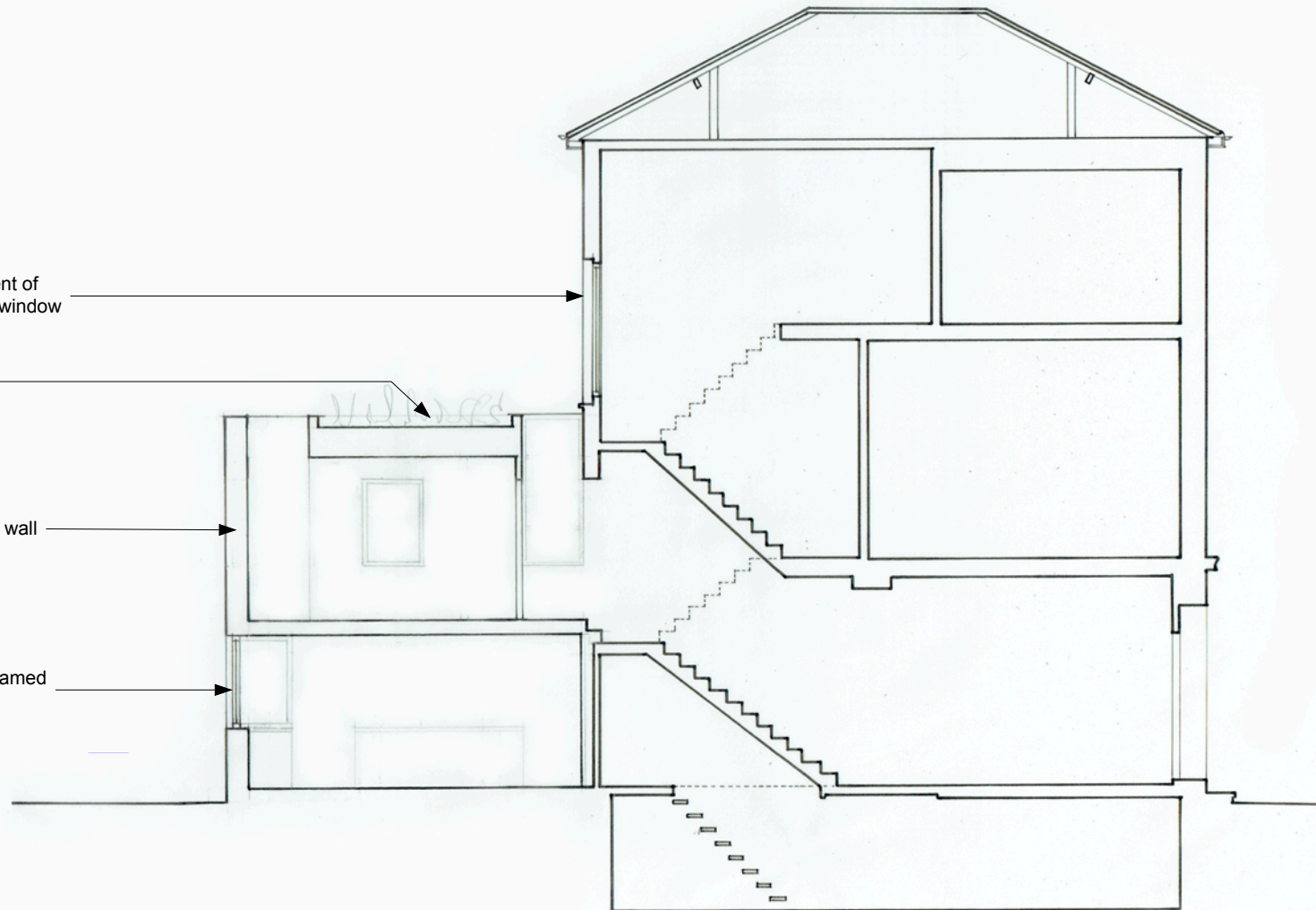
Tel: 020 7358 1618
www.greenandteggin.co.uk

Reinstatement of
timber sash window

Green roof

Timber clad wall

Aluminium framed
window



Issue	Date	Rev
-------	------	-----

1 Lawford Road London, NW5 2LH		
-----------------------------------	--	--

Drawing:
Proposed Longitudinal Section

Status: PLANNING	Date: Dec 23	Scale: 1:100@A4
---------------------	-----------------	--------------------

Job No: 2308	Dwg No: PR08	Rev: B
-----------------	-----------------	-----------

Green & Teggin
Architects

5m