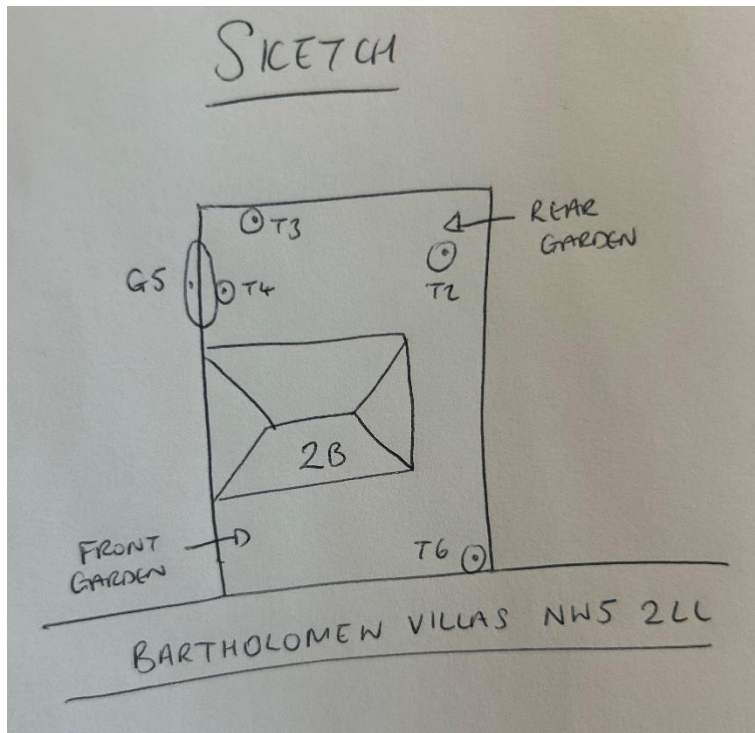


2b Bartholomew Villas NW5 2LL





T2: Bay (6m): Pollard to 50% of present height removing 3m of regrowth to keep tree at a size suitable for its location and as part of regular maintenance

T3: Fig (8m): Re-pollard to previous points removing 5m of regrowth to keep tree at a size suitable for its location and as part of regular maintenance

G5: Group of 7 Lime (up to 9m): Re-pollard to previous points removing up to 5m of regrowth to keep trees at a size suitable for their location and as part of regular maintenance

T6: Horse chestnut (18m): Crown lift to 5m from ground level to prevent tree obscuring street lights, street signs and driveway