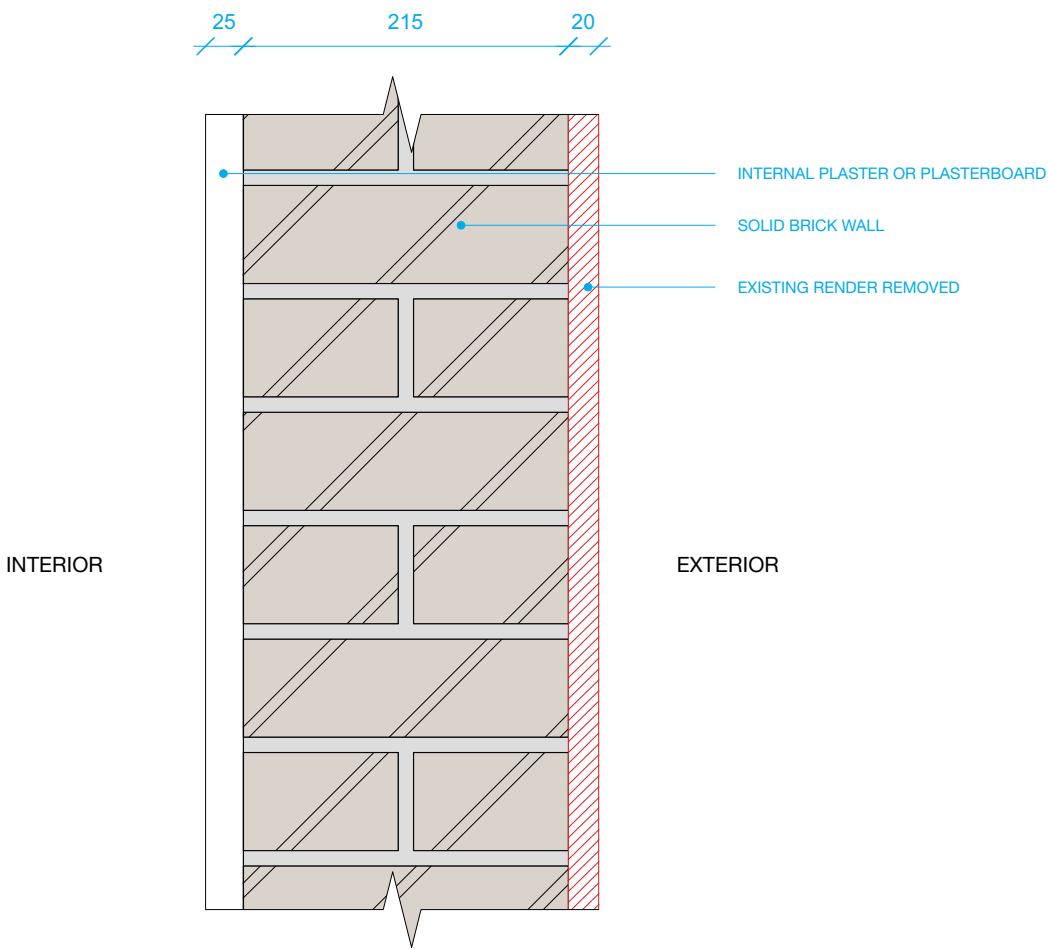


© This drawing is the property of Miltiadou Cook Mitzman architects. No disclosure or copy of it may be made without the written permission of Miltiadou Cook Mitzman architects.

For construction purposes:

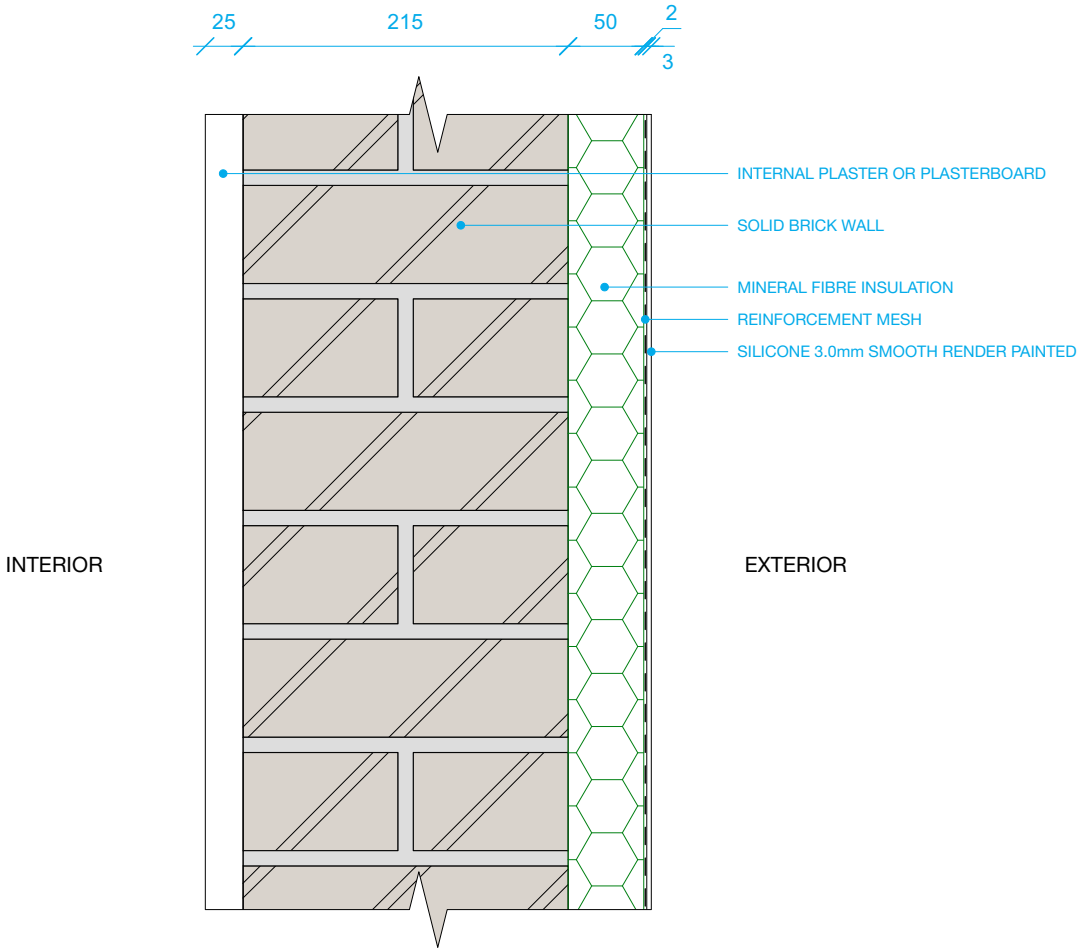
- Do not scale this drawing.
- All dimensions and levels to be checked on site.
- Discrepancies to be reported to Miltiadou Cook Mitzman architects before proceeding.
- If in any doubt about information on this drawing contact Miltiadou Cook Mitzman architects.

REVISION			
NUMBER	DATE	BY	NOTES
P1	23/02/2024	RH	Issued for planning



1 Existing Wall Build-up
1:5

U-VALUE: 1.84W/m²K



2 Proposed Wall Build-up
1:5

U-VALUE: 0.48W/m²K

NOTES:

KEY

 DEMOLITION



MILTIADOU
COOK
MITZMAN architects llp

020 7722 8525
office@mcma.design
www.mcma.design

Unit 1 Primrose Mews
Sharpleshall Street
London NW1 8YW

CLIENT
Miszkiel

PROJECT
52 Doughty Street, London, WC1N
2LS

SHEET TITLE
Existing and Proposed Wall Build-up:
LGF Front Lightwell

SCALE
1:5

DATE CREATED
FEB 24

FILE REFERENCE

DRAWING NUMBER	REVISION
407-DWG-305	P1