

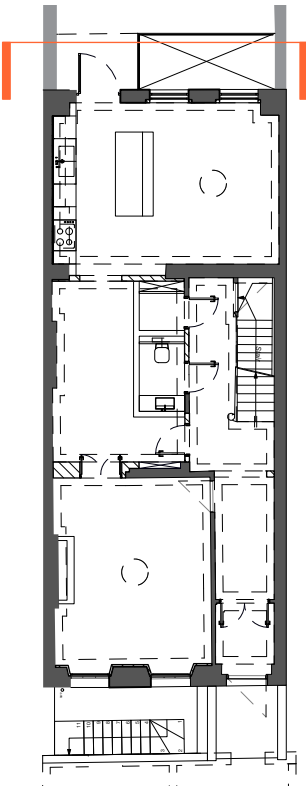
© This drawing is the property of Miltiadou Cook Mitzman architects. No disclosure or copy of it may be made without the written permission of Miltiadou Cook Mitzman architects.

For construction purposes:

- Do not scale this drawing.
- All dimensions and levels to be checked on site.
- Discrepancies to be reported to Miltiadou Cook Mitzman architects before proceeding.
- If in any doubt about information on this drawing contact Miltiadou Cook Mitzman architects.

REVISION NUMBER	DATE	BY	NOTES
P1	21/12/2023	SM	Issued for Planning
P2	05/01/2024	RH	One ASHP omitted
P3	17/01/2024	RH	Rear lightwell amended, flues to be removed and context added
P4	23/02/2024	RH	Trellis added to both sides of terrace

KEY PLAN



MCMa

MILTIADOU
COOK
MITZMAN architects llp

020 7722 8525
office@mcma.design
www.mcma.design

3rd Floor
10-12 Emerald Street
London WC1N 3QA

CLIENT
Miszkiel

PROJECT
52 Doughty Street, London, WC1N 2LS

SHEET TITLE
Existing/ Demo and Proposed Rear Elevation (including LGF)

SCALE
1:100

DATE CREATED
OCTOBER 23

DRAWING NUMBER	REVISION
407-DWG-121-04	P4

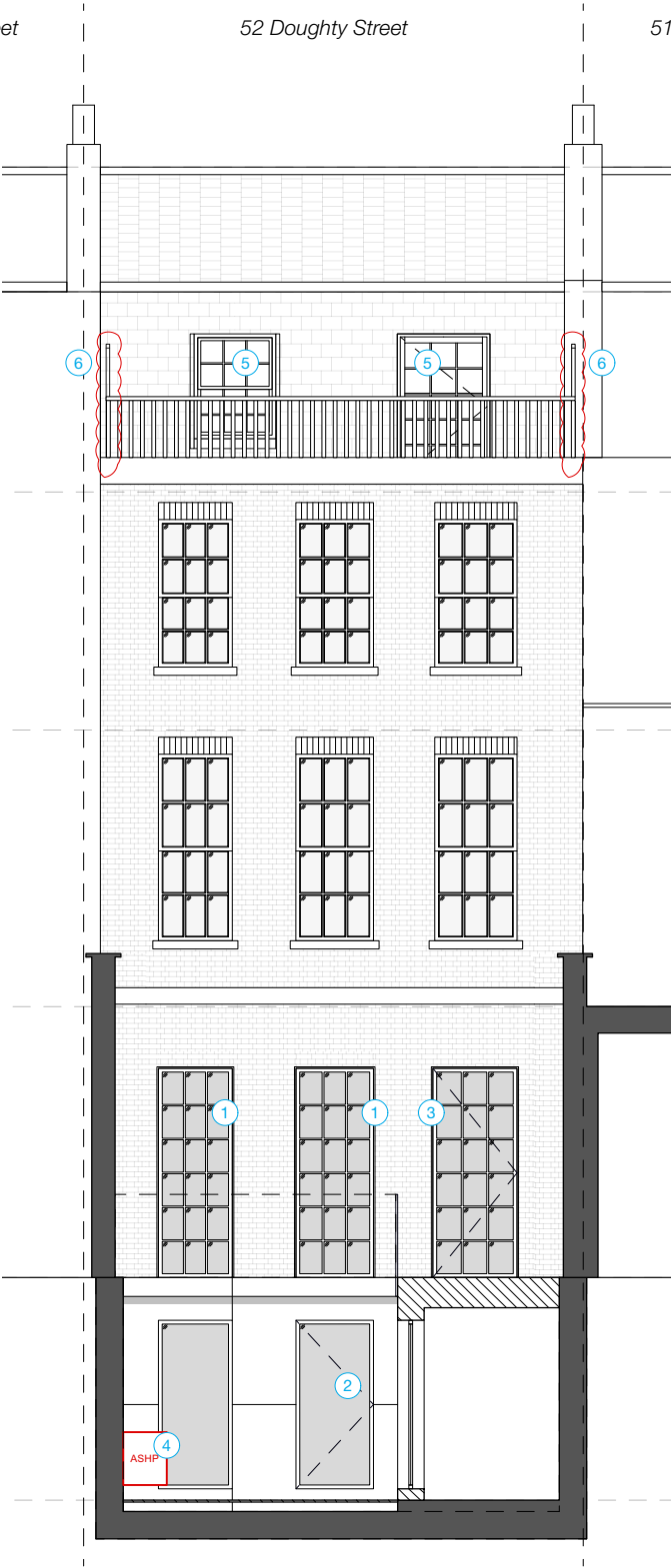


1 Existing/ Demolition Rear Elevation
1:100

KEY



- 1 DEMOLITION OF EXISTING REAR GROUND FLOOR WINDOWS AND WALL
- 2 DEMOLITION OF EXISTING REAR GROUND FLOOR DOOR AND WALL
- 3 DEMOLITION OF SLAB TO CREATE REAR LIGHTWELL AS PER 1914 PLANS
- 4 EXISTING POOR CONDITION SINGLE-GLAZED DOOR AND WINDOWS TO BE REMOVED
- 5 REMOVAL OF FLUES



2 Proposed Rear Elevation
1:100

KEY



- 1 FORMATION OF OPENING FOR DOUBLE-GLAZED TIMBER WINDOWS IN LOCATION OF PREVIOUS WINDOWS
- 2 REINSTATEMENT OF REAR LIGHTWELL AS PER 1914 PLANS, CLAD IN FIBRE CEMENT BOARD
- 3 FORMATION OF OPENING FOR TRIPLE-GLAZED TIMBER DOOR IN LOCATION OF PREVIOUS DOOR
- 4 AIR-SOURCE HEAT PUMP TO BE INSTALLED IN REAR LIGHTWELL
- 5 REPLACEMENT TRIPLE-GLAZED DOOR AND DOUBLE-GLAZED WINDOW TO MATCH EXISTING
- 6 TRELLIS TO BOTH SIDES OF ROOF TERRACE