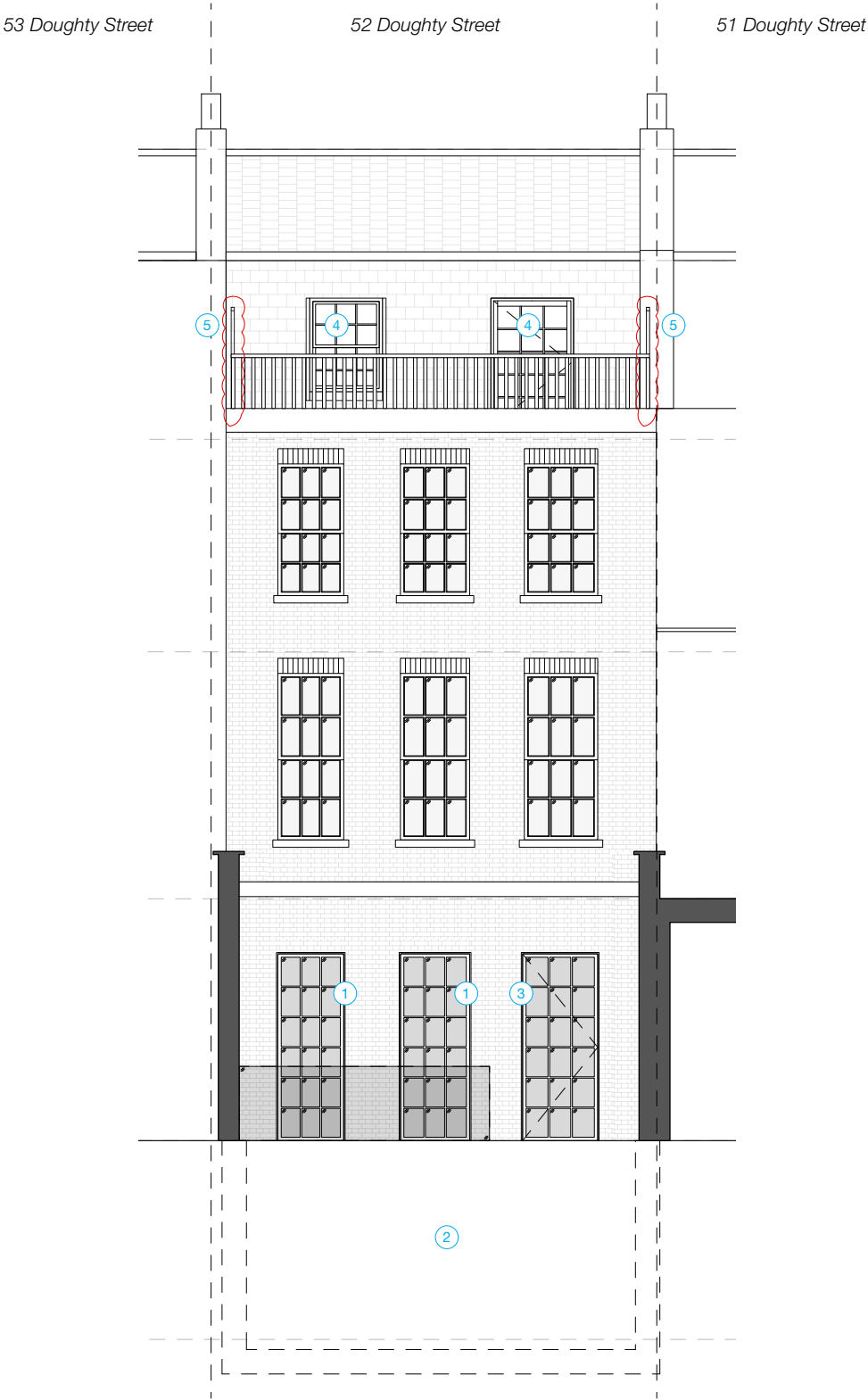




1 Existing/ Demolition Rear Elevation
1:100

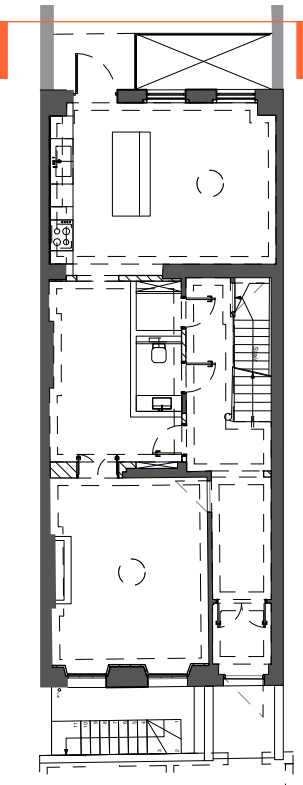
- KEY
- DEMOLITION
- 1 DEMOLITION OF EXISTING REAR GROUND FLOOR WINDOWS AND WALL
 - 2 DEMOLITION OF EXISTING REAR GROUND FLOOR DOOR AND WALL
 - 3 EXISTING POOR CONDITION SINGLE-GLAZED DOOR AND WINDOWS TO BE REMOVED
 - 4 REMOVAL OF FLUES



2 Proposed Rear Elevation
1:100

- KEY
- PROPOSED
- 1 FORMATION OF OPENING FOR DOUBLE-GLAZED TIMBER WINDOWS IN LOCATION OF PREVIOUS WINDOWS
 - 2 REINSTATEMENT OF REAR LIGHTWELL AS PER 1914 PLANS, CLAD IN FIBRE CEMENT BOARD
 - 3 FORMATION OF OPENING FOR TRIPLE-GLAZED TIMBER DOOR IN LOCATION OF PREVIOUS DOOR
 - 4 REPLACEMENT TRIPLE-GLAZED DOOR AND DOUBLE-GLAZED WINDOW TO MATCH EXISTING
 - 5 TRELLIS TO BOTH SIDES OF ROOF TERRACE

KEY PLAN



MILTIADOU
COOK
MITZMAN architects llp

020 7722 8525 3rd Floor
office@mcma.design 10-12 Emerald Street
www.mcma.design London WC1N 3QA

CLIENT
Miszkiel

PROJECT
52 Doughty Street, London, WC1N
2LS

SHEET TITLE
Existing/ Demo and Proposed Rear
Elevation

SCALE
1:100

DATE CREATED FILE REFERENCE
OCTOBER 23

DRAWING NUMBER	REVISION
407-DWG-121-03	P3