




1 Demolition Front Elevation (including Front Lightwell)
1:100


KEY

-  DEMOLITION
- ① EXISTING PORCH REMOVED
- ② EXISTING FRONT DOOR REMOVED
- ③ EXISTING NON-ORIGINAL FRONT RAMP TO BE REMOVED
- ④ EXISTING LIGHTWELL STAIRCASE AGAINST FRONT FACADE REMOVED



2 Proposed Front Elevation (including Front Lightwell)
1:100

KEY

-  PROPOSED
- ① NEW FRONT DOOR
- ② REINSTATEMENT OF FRONT STEP & STONE DOOR THRESHOLD
- ③ REPLACEMENT LIGHTWELL STAIRCASE AWAY FROM FRONT FACADE
- ④ EXTERNAL WALL INSULATION TO FRONT LIGHTWELL

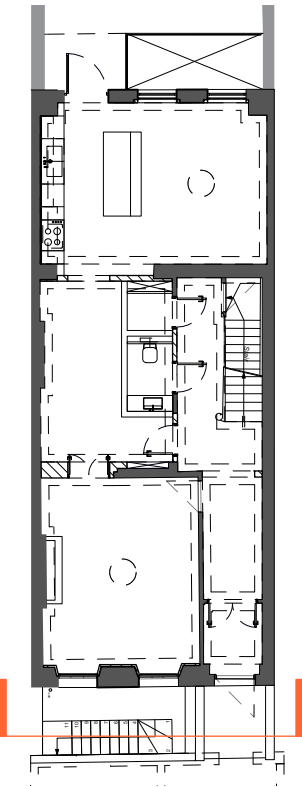
© This drawing is the property of Miltiadou Cook Mitzman architects. No disclosure or copy of it may be made without the written permission of Miltiadou Cook Mitzman architects.

For construction purposes:

- Do not scale this drawing.
- All dimensions and levels to be checked on site.
- Discrepancies to be reported to Miltiadou Cook Mitzman architects before proceeding.
- If in any doubt about information on this drawing contact Miltiadou Cook Mitzman architects.

REVISION NUMBER	DATE	BY	NOTES
P1	21/12/2023	SM	Issued for Planning
P2	17/01/2024	RH	Existing RWP and Juliette balconies added
P3	23/02/2024	RH	External wall insulation to front lightwell added

KEY PLAN



MCMa MULTIADOU COOK MITZMAN architects llp

020 7722 8525
office@mcma.design
www.mcma.design

3rd Floor
10-12 Emerald Street
London WC1N 3QA

CLIENT
Miszkiel

PROJECT
52 Doughty Street, London, WC1N 2LS

SHEET TITLE
Existing/ Demo and Proposed Front Elevation (including Front Li

SCALE
1:100

DATE CREATED
OCTOBER 23

DRAWING NUMBER
407-DWG-120-02

REVISION
P3