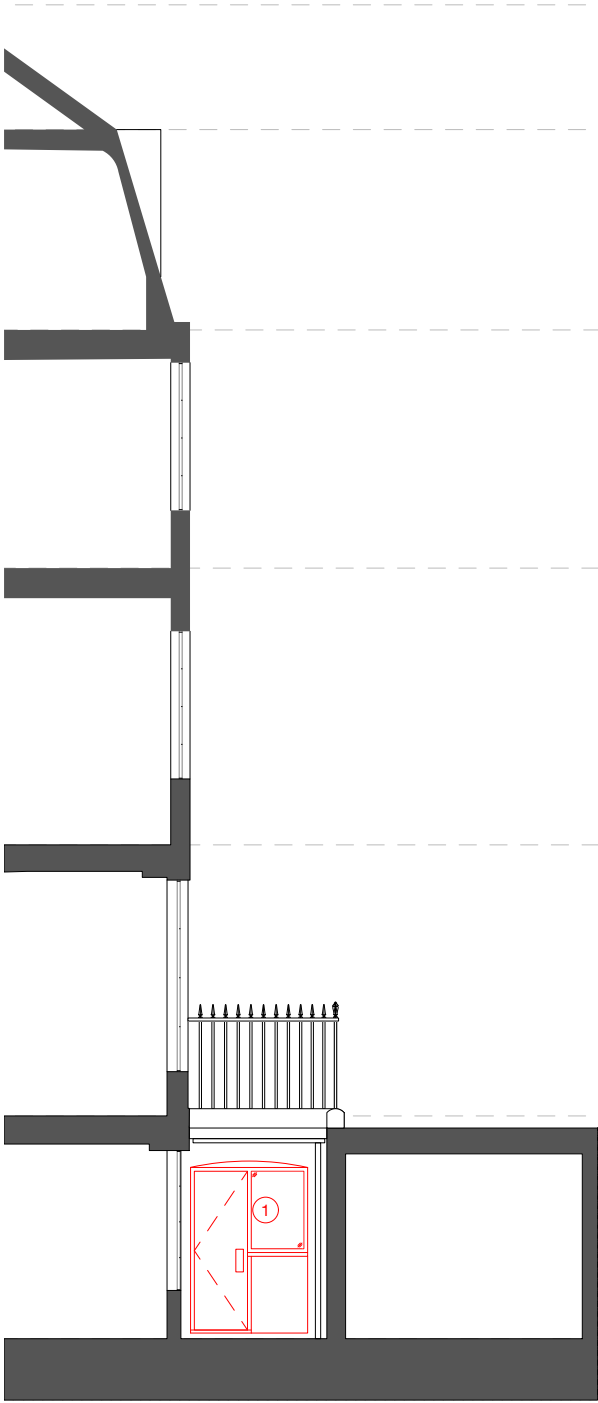


© This drawing is the property of Miltiadou Cook Mitzman architects. No disclosure or copy of it may be made without the written permission of Miltiadou Cook Mitzman architects.

For construction purposes:

- Do not scale this drawing.
- All dimensions and levels to be checked on site.
- Discrepancies to be reported to Miltiadou Cook Mitzman architects before proceeding.
- If in any doubt about information on this drawing contact Miltiadou Cook Mitzman architects.

REVISION			
NUMBER	DATE	BY	NOTES
P1	05/01/2024	RH	Issued for Planning
P2	23/02/2024	RH	External wall insulation to front lightwell added

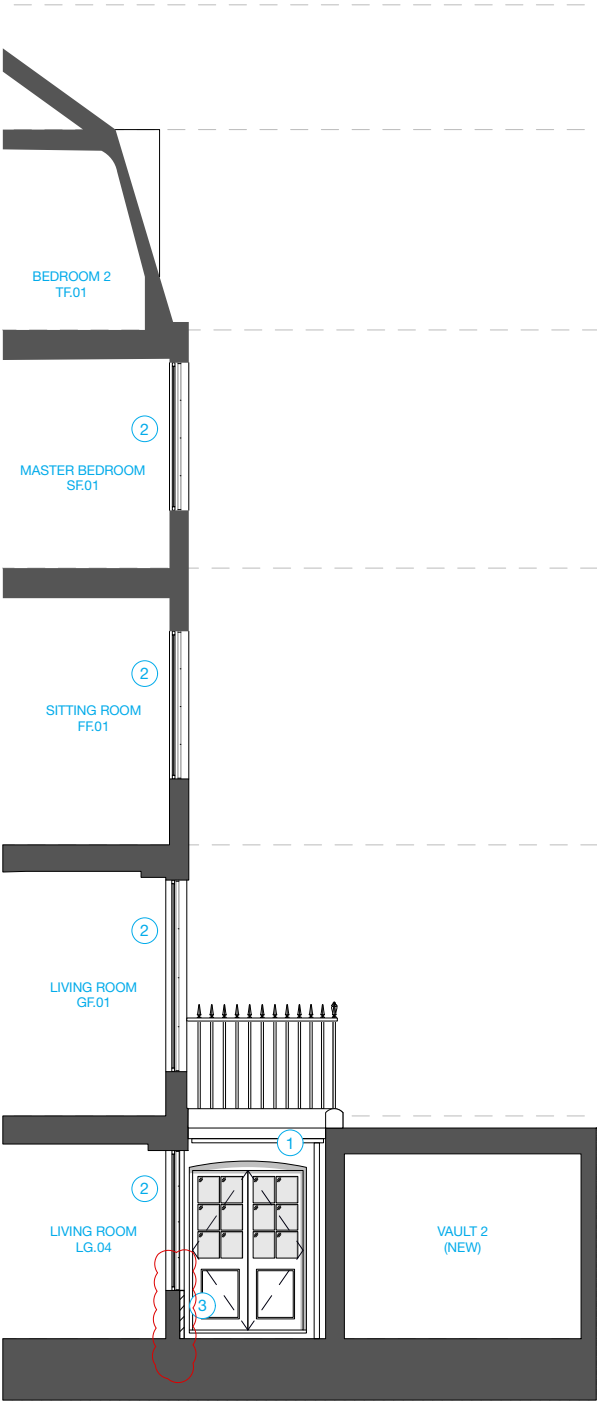


1 Existing/ Demolition Section D-D
1:100

KEY

 DEMOLITION

① DEMOLITION OF EXISTING DOOR, SIDELIGHT AND WALL TO FRONT LIGHTWELL



2 Proposed Section D-D
1:100

KEY

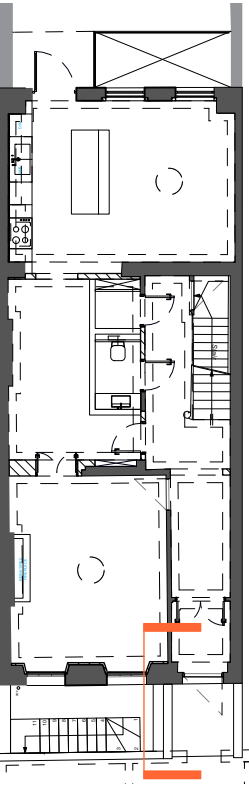
 PROPOSED

① DOUBLE-GLAZED DOUBLE DOOR TO FRONT LIGHTWELL

② SECONDARY GLAZING

③ EXTERNAL WALL INSULATION TO FRONT LIGHTWELL

KEY PLAN





MILTIADOU
COOK
MITZMAN architects llp

020 7722 8525
office@mcma.design
www.mcma.design

3rd Floor
10-12 Emerald Street
London WC1N 3QA

CLIENT
Miszkiel

PROJECT
52 Doughty Street, London, WC1N
2LS

SHEET TITLE
Existing/ Demo and Proposed Section
D-D

SCALE
1:100

DATE CREATED
OCTOBER 23

DRAWING NUMBER	REVISION
407-DWG-113	P2