

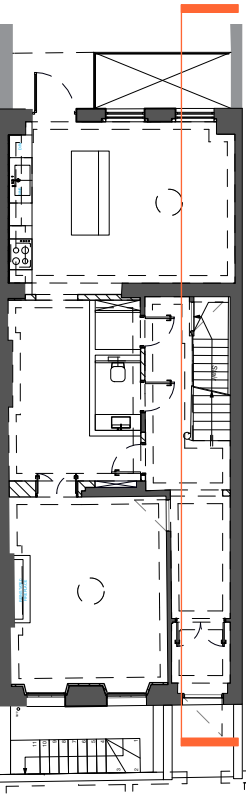
© This drawing is the property of Miltiadou Cook Mitzman architects. No disclosure or copy of it may be made without the written permission of Miltiadou Cook Mitzman architects.

**For construction purposes:**

- Do not scale this drawing.
- All dimensions and levels to be checked on site.
- Discrepancies to be reported to Miltiadou Cook Mitzman architects before proceeding.
- If in any doubt about information on this drawing contact Miltiadou Cook Mitzman architects.

REVISION				
NUMBER	DATE	BY	NOTES	
P1	21/12/2023	SM	Issued for Planning	
P2	17/01/2024	RH	Front step, door threshold and context added	
P3	23/02/2024	RH	Existing loft hatch retained, trellis added and additional solar panel	

KEY PLAN





MILTIADOU  
COOK  
MITZMAN architects llp

020 7722 8525  
office@mcma.design  
www.mcma.design

3rd Floor  
10-12 Emerald Street  
London WC1N 3QA

**CLIENT**  
Miszkiel

**PROJECT**  
52 Doughty Street, London, WC1N  
2LS

**SHEET TITLE**  
Proposed Section A-A

**SCALE**  
1:100

**DATE CREATED**  
OCTOBER 23

**FILE REFERENCE**

DRAWING NUMBER	REVISION
407-DWG-110	P3

S Proposed Section A-A  
1:100

KEY

 PROPOSED

- ① REINSTATEMENT OF REAR LIGHTWELL AS PER 1914 PLANS, CLAD IN FIBRE CEMENT BOARD
- ② NEW PARTITION AND DOOR
- ③ NEW FRONT DOOR
- ④ REINSTATEMENT OF VAULT AS PER 1914 PLANS
- ⑤ SECONDARY GLAZING

- ⑥ INSTALLATION OF TRELLIS TO BOTH SIDES OF TERRACE
- ⑦ INSTALLATION OF 10 NO. PHOTOVOLTAIC PANELS (FLAT)
- ⑧ FORMATION OF OPENING FOR DOUBLE-GLAZED TIMBER WINDOW IN LOCATION OF PREVIOUS WINDOW
- ⑨ REINSTATEMENT OF FRONT STEP & STONE DOOR THRESHOLD