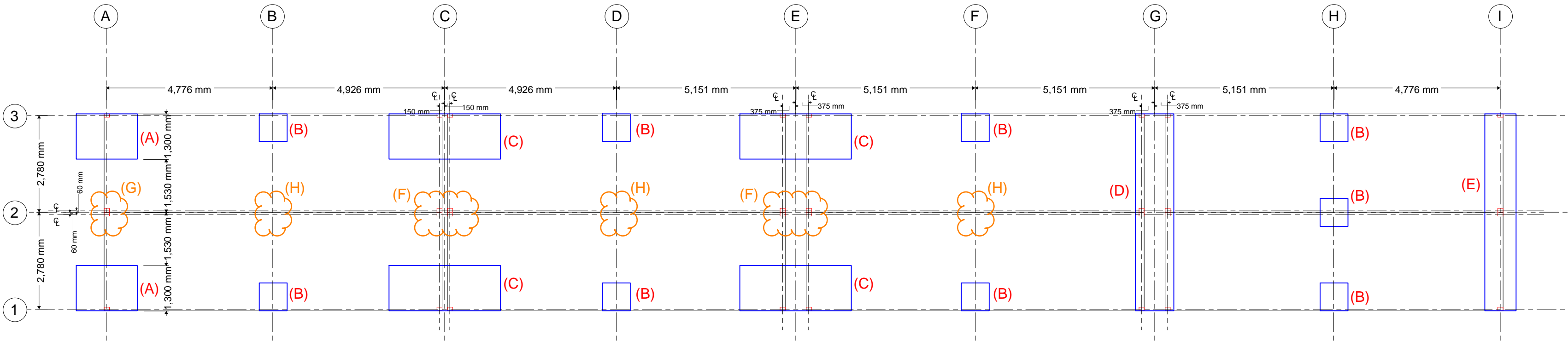
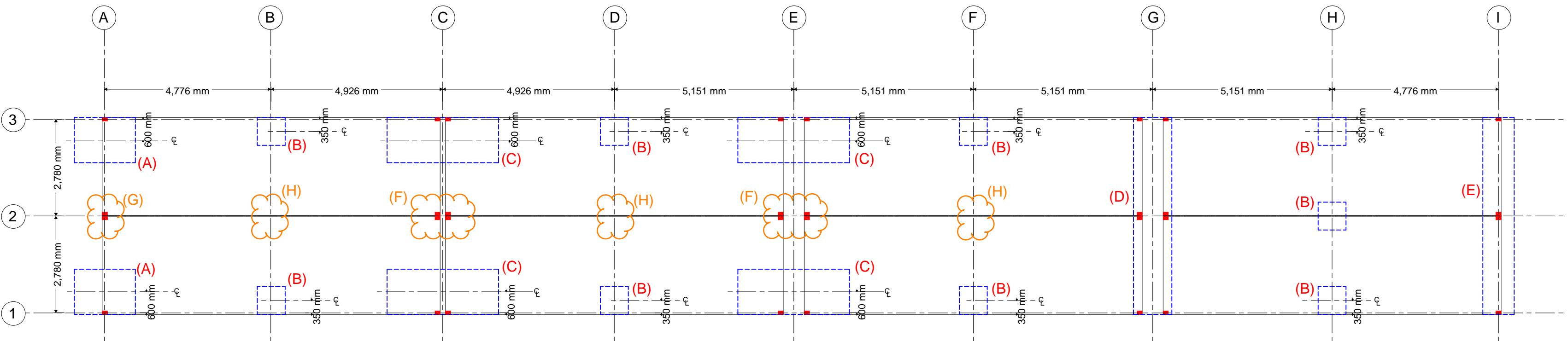


ELEVATION ON GRID "3"



CABIN LEGS SETTING OUT



FOUNDATION PADS SETTING OUT

GENERAL NOTES

ASSUMED 100x150mm CABIN LEGS AS PER
DRAWING DQ5087 - REV. A BY PORTAKABIN LIMITED

DESIGN NOTES

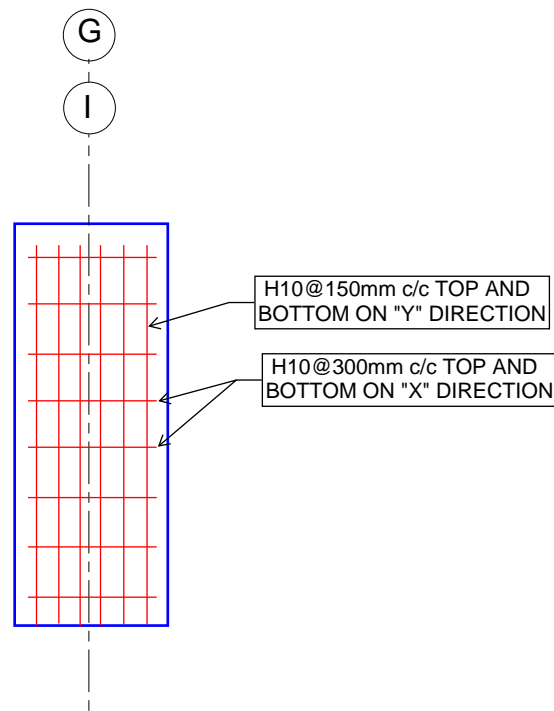
- CABIN LEGS TO BE SUPPORTED BY A 20mm STEEL PLATE (SIZE TO BE CONFIRMED BY THE PADS MANUFACTURER)
- CABIN LEGS TO BE CONNECTED TO THE PAD FOUNDATION WITH ANCHOR BRACKETS. REFER TO SKETCH "A" BELOW FOR FURTHER DETAILS.
- CONCRETE GRADE: C25/30
- COVER: 25mm ALL SIDES
- USE H10@200mm c/c TOP, BOTTOM AND SIDES FOR ALL PADS TYPE A, B AND C
- USE H10@150mm c/c TOP AND BOTTOM ON LONGITUDINAL DIRECTION AND H10@300mm c/c TOP AND BOTTOM ON THE OTHER DIRECTION FOR ALL STRIP FOOTINGS TYPE D AND E (REFER TO SKETCH B)

LEGEND

- CABIN LEG
- + LEVEL FROM TOPGRAPHICAL SURVEY (REFER TO DRAWING 43589_T)
- (A) 1750mm x 1300mm RC PAD
- (B) 800mm x 800mm RC PAD
- (C) 3200mm x 1300mm RC PAD
- (D) 1100mm WIDE RC STRIP FOOTING
- (E) 900mm WIDE RC STRIP FOOTING
- (F) SUPPORT TO BE PROVIDED AND DESIGNED BY OTHERS. VERTICAL LOAD Fz = 212KN (SLS) MAXIMUM BASE PRESSURE: 100KN/m2
- (G) SUPPORT TO BE PROVIDED AND DESIGNED BY OTHERS. VERTICAL LOAD Fz = 106KN (SLS) MAXIMUM BASE PRESSURE: 100KN/m2
- (H) SUPPORT TO BE PROVIDED AND DESIGNED BY OTHERS. VERTICAL LOAD Fz = 34KN (SLS) MAXIMUM BASE PRESSURE: 100KN/m2

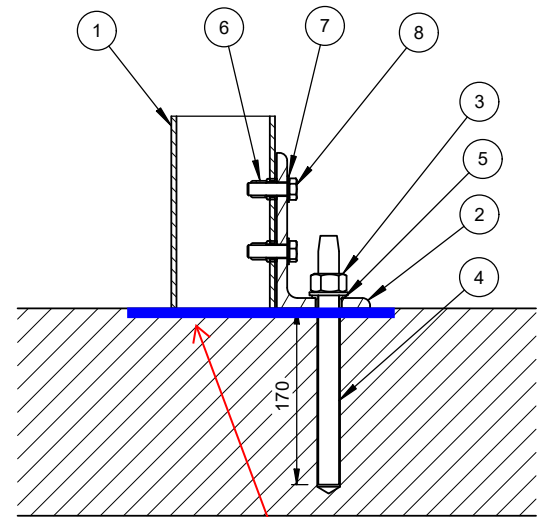
SKETCH B

(REINFORCEMENT TO STRIP FOOTINGS)



SKETCH A

(Extracted from Drawing DQ5020 by Portakabin)



ADDITIONAL 20mm THICK BASE PLATE AS PER DESIGN NOTES

BOLTING DOWN INSTRUCTIONS:

ON SITE:

1. ATTACH THE BRACKET TO THE COLUMN BY BOLTING THROUGH THE BRACKET INTO THE M16 RIVET NUTS USING THE FIXINGS SHOWN.
2. DRILL THROUGH THE HOLE IN THE BRACKET WITH A Ø24mm DRILL BIT INTO THE FOUNDATION PAD. THIS HOLE SHOULD BE CENTRAL IN THE OVERSIZED HOLE IN THE BRACKET. CONSULT THE INSTRUCTIONS INCLUDED IN ANCHOR ROD PACK FOR DEPTH DETAILS.
3. INSTALL THE ANCHOR ROD AS DETAILED IN THE INSTRUCTIONS INCLUDED IN THE PACKET, ENSURING THE BUSHING IS INCLUDED.

NOTE: THE DRILL BIT NEEDS TO BE A MINIMUM LENGTH OF 600mm.

PARTS LIST (Per Bracket)

ITEM	QTY	PART NUMBER	DESCRIPTION
1	1	N/A	MODULE ASSEMBLY
2	1	BE6463	KM - BOLTING DOWN BRACKET
3	1	GE4040	ANCHOR ROD HILTI HAS-U 44 M20x240
4	1	GE0011	RESIN CAPSULE HILTI HVU M20x170
5	1	G03778	KM M20 TOP HAT ISOLATING WASHER
6	2	E04322	M12 BLIND RIVET NUT SXX058 3.5-7mm
7	2	E01511	LOCK WASHER FORM J BZP M12
8	2	E01094	SETSCREW HEX BZP M12 x 40

REV	DATE	DESCRIPTION	RVD	REV	DATE	DESCRIPTION	RVD
P3	19/10/23	INFORMATION	MD				
P2	11/10/23	INFORMATION	MD				
P1	04/10/23	INFORMATION	MD				
REVISIONS				REVISIONS			

CLIENT
MACE

London Office –
163 Tower Bridge Rd, London SE1 3LW
P / +44 203 775 1400
E / info@bgeeng.com
bgeeng.com–



PROJECT
BELGROVE HOUSE

STATUS ISSUED FOR INFORMATION NOT TO BE USED FOR CONSTRUCTION			
DRAWN GA	DESIGNED GA	CHECKED MD	APPROVED MD
DATUM	GRID	SCALE 1:100	AT A1 SIZE

TITLE
**DAY 2 SITE ACCOMMODATION
FOUNDATION PADS SETTING OUT
CABIN LEGS SETTING OUT**

PROJECT No. L22083	DRAWING No. BGE - DR 100	REV. P3
------------------------------	------------------------------------	-------------------