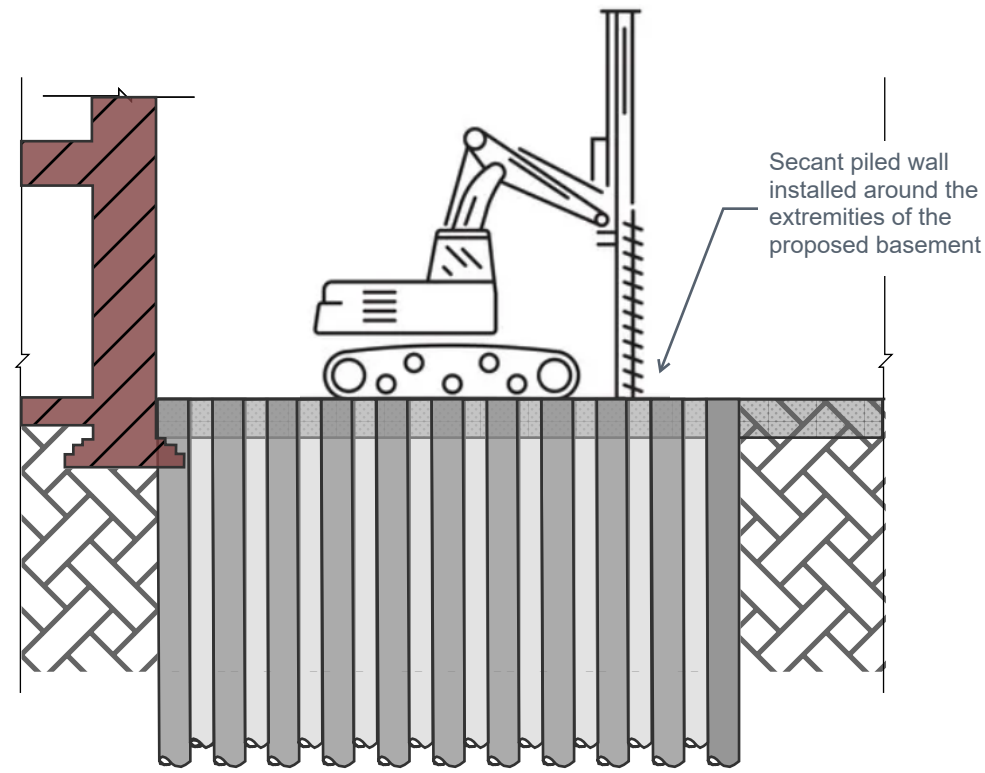
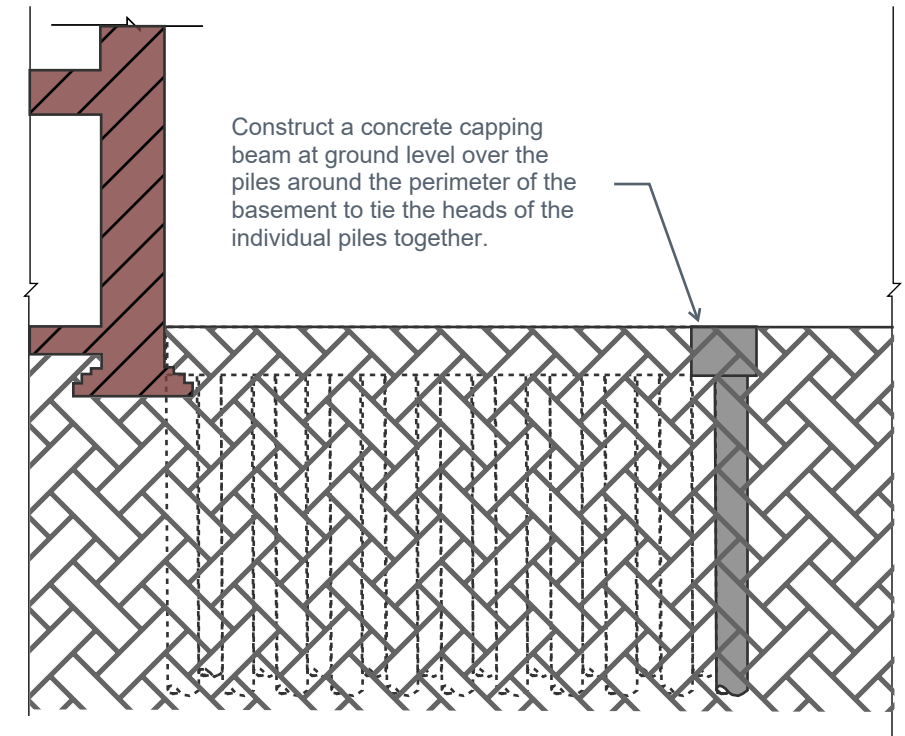


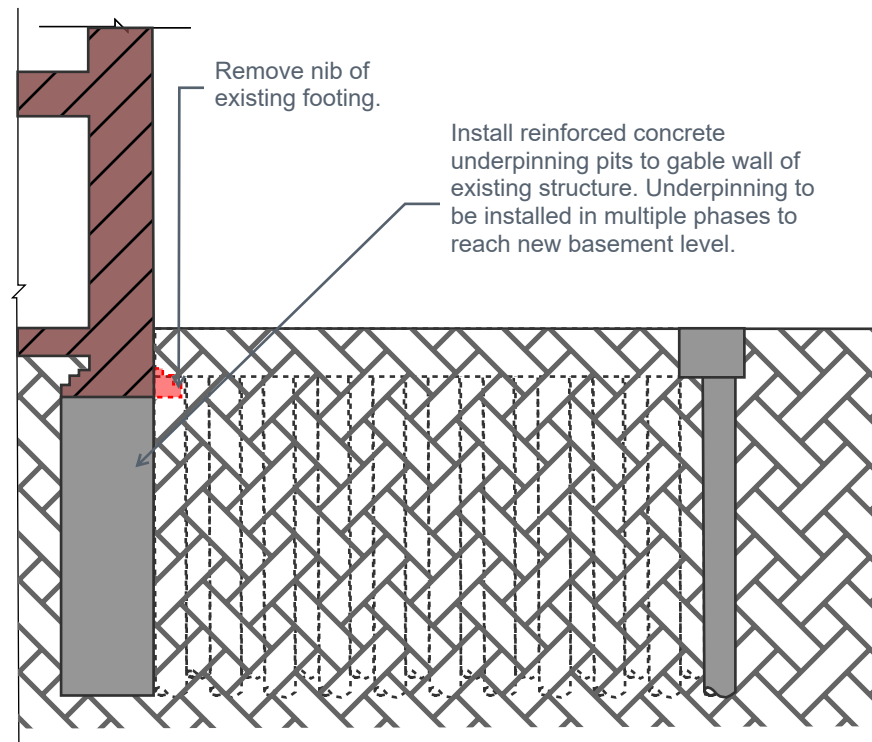
Step 1: Piling Mat Installed



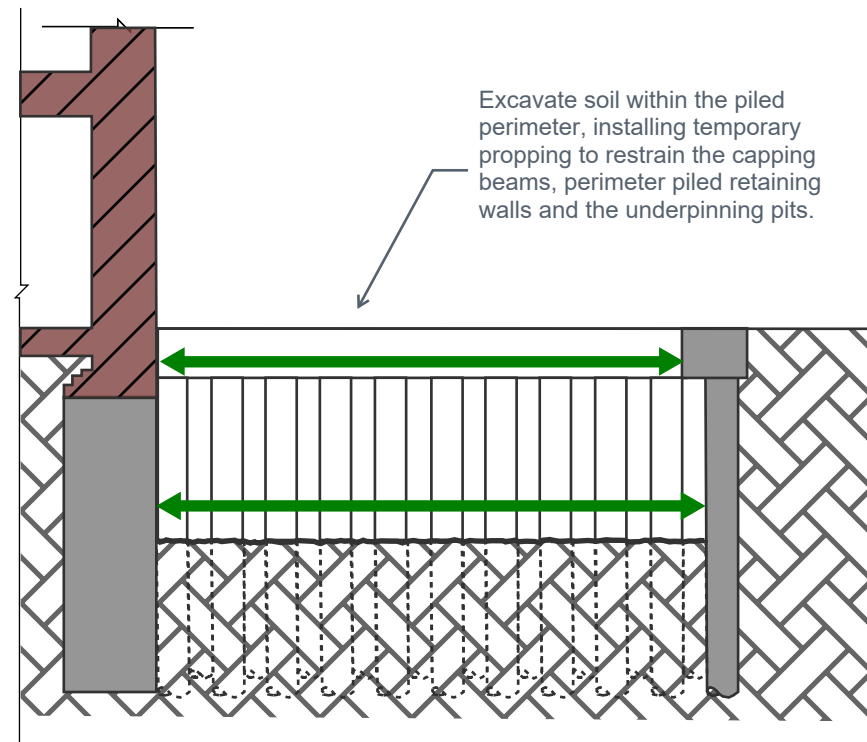
Step 2: Secant Piles Installed



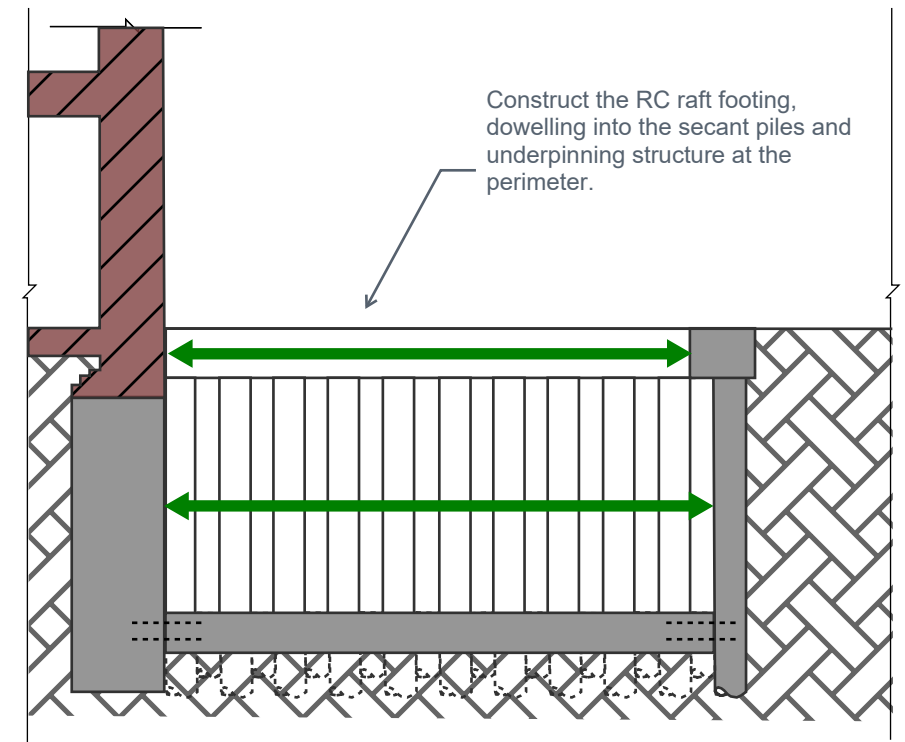
Step 3: Capping Beam Construction



Step 4: Construct Underpinning



Step 5: Excavation & Propping

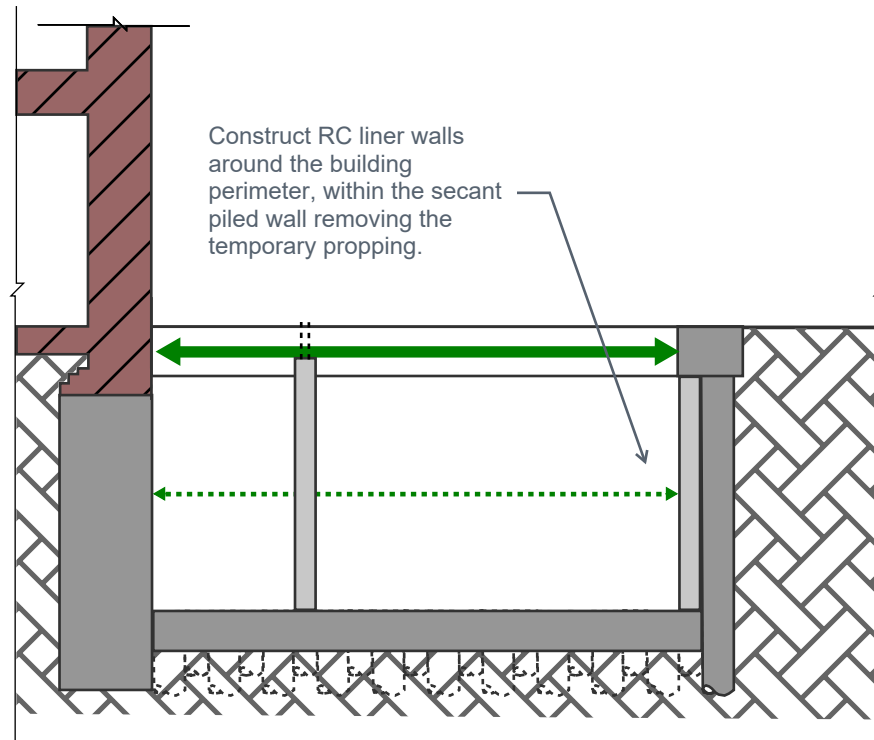


Step 6: Form RC Raft

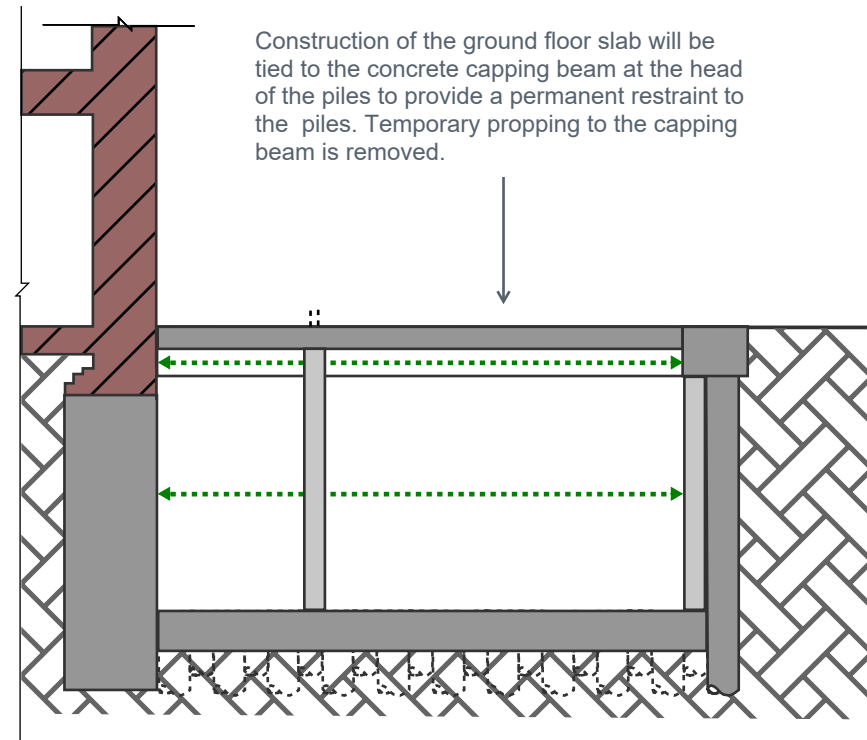
Project Name	Branch Hill House - BIA		P01
Sketch Title	Construction & Temporary Works Sequencing		
Project No.	23152	Sketch No.	SK-231128
		Date	28/11/2023
By	AB	Checked	DB
		Scale	NTS

Notes:

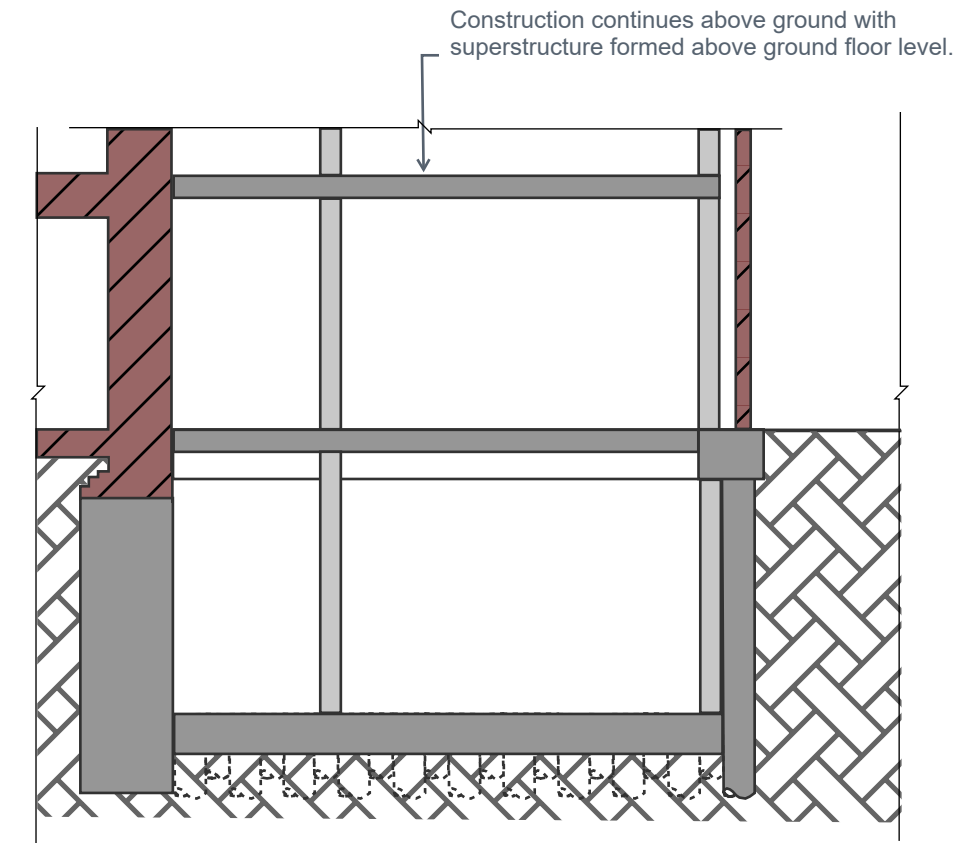
- Sequencing sketches are preliminary and TBC design development.
- Temporary works design by others.
- Sketches are not to scale.



Step 7: Form RC Liner Walls



Step 8: Form RC Ground Slab



Step 9: Above Ground Construction

Project Name	Branch Hill House - BIA			P01	
Sketch Title	Construction & Temporary Works Sequencing				
Project No.	23152	Sketch No.	SK-231128	Date	28/11/2023
By	AB	Checked	DB	Scale	NTS

Notes:

- Sequencing sketches are preliminary and TBC design development.
- Temporary works design by others.
- Sketches are not to scale.