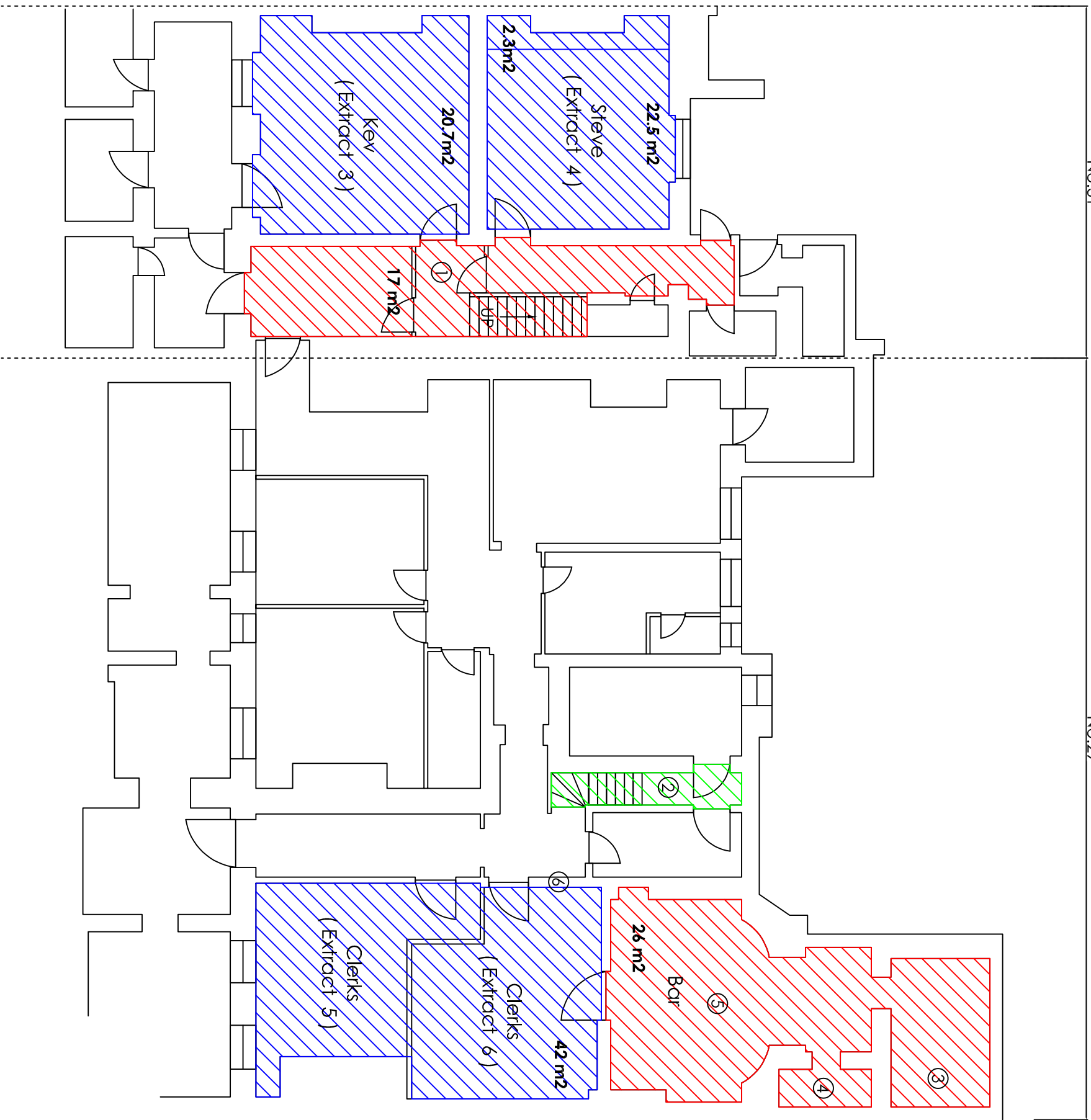
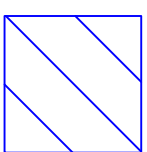
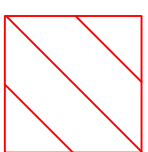


No.31

No.29



 Phase 1  
85.4m<sup>2</sup>

 Added to scope  
Phase 1  
42.4m<sup>2</sup>

 Added to scope  
Phase 2  
2.8m<sup>2</sup>

- ① Decoration, ceilings, lights, hand rails + protect flooring
- ② Decoration, flooring, lights + hand rails
- ③ New cleaners store + partition
- ④ Tanking works
- ⑤ Decoration, flooring, ceiling + lights
- ⑥ Glazed partition & door set (2538mm x 2350hmm)

Not drawn to scale



Progress Furnishing Systems Ltd, Ground Floor,  
Tourelton House, Waterlode Court, Neblime Way,  
Medway City Estate, Rochester, Kent, ME2 4NZ  
Tel: 01634 250 788 Fax: 01634 271 028  
Email: sales@progressfurnishing.co.uk

Designed by: MC Checked by: JBF Project: 1952

Drawing name:  
Existing Basement  
General arrangement

Drawing reference: 001\_FB Revision A

Date: 30/09/22 Scale: @A3 NTS Drawing Status: AB

Filename: 001\_FB - Existing basement GA

Revision: AB Description: AS BUILT Date: 30.09.22

Do not scale from this drawing. All dimensions to be verified on site prior to the commencement of any work or the production of any shop drawing.

This drawing remains the property of Progress, and is not to be disclosed or discussed with any third party without prior written authorization from Progress. All rights reserved.