

notes

1. Read in conjunction with all relevant Architects, Engineers & design team drawings & specifications
2. Any discrepancies must be drawn to the attention of the lead consultant in writing
3. All dimensions are in millimeters unless otherwise noted & are subject to checking on site prior to fabrication or ordering of materials
4. This drawing is the copyright of Bowles & Wyer (and other consultants where referenced)

Key

- Existing trees (retained)
- Proposed specimen trees in soft
- Proposed specimen trees in raised planters / pots
- Amenity planting
mix of woodland planting and perennials for all year round interest
- Wildflower planting
grass and wildflower species mix that provide a natural meadow look
- Proposed hedges
native hedges along the boundary and amenity hedges for private gardens
- Species-rich lawn
80% grasses + 20% flora
- Sedum green roof

General notes:

To be read in conjunction with the landscape masterplan produced by B&W and the Arboricultural Impact Assessment by Landmark Trees .

Planting notes:

All new trees to have underground guying to provide adequate support.

All trees and specimen shrubs to be tagged or approved by landscape architect prior to order. No substitutions or changes in specification permitted without consulting the landscape architect.

Final species selection subject to nursery availability.

Soil: Imported topsoil, peat free to BS 3882.

For planting beds: generally, the top 300mm, max. 400mm of the planting bed to be peat free topsoil, followed by landscape subsoil.

All existing sub-base to be decompacted prior to importing new soil.

Planting densities:

- shrub planting: 3L-5L pots to an approximate density of 3pl/m²
- herbaceous planting: 1L-3L pots to an approximate density of 7pl/m²
- groundcover planting: 1L pots to an approximate density of 7-9pl/m²

PL02 02.02.24 AP - Access road to MG building updated
PL01 22.01.24 AP - For planning application
rev date by chk notes

BOWLES & WYER
5 Williams Court, Tunnel Way, Pitstone, Nr. Leighton Buzzard, LU7 9GJ
Tel: 01296 662439 Fax: 01296 663959 Email: admin@bowleswyer.co.uk

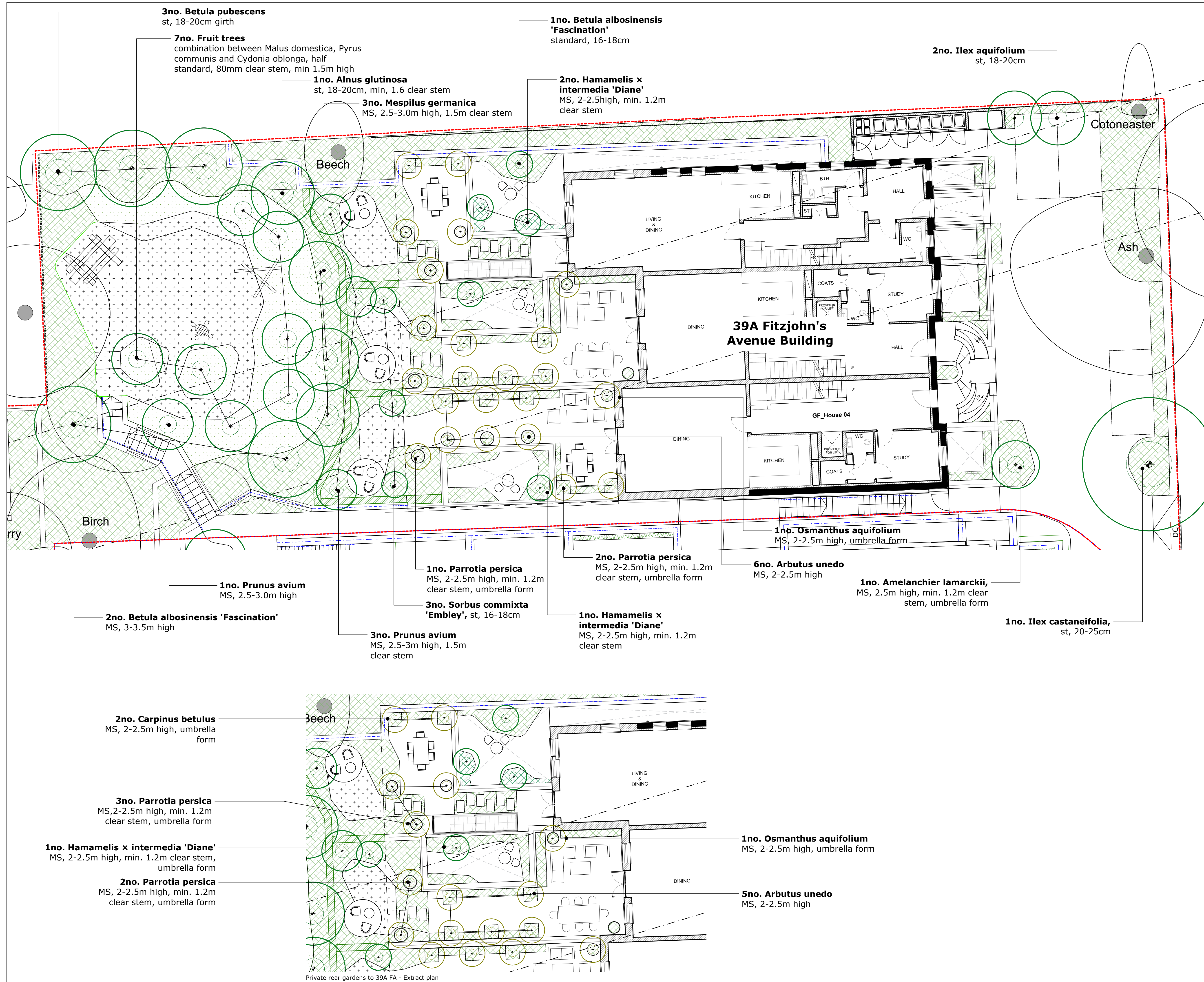
project title
Land adjacent to 46 Maresfield Gardens and 39a Fitzjohn's Avenue

drawing title
PLANTING MASTERPLAN

job number drawing number
3031 3031-XX-DR-L-602-PL

status
FOR PLANNING

scale 1:200@A1
0 2m 10m 20m



notes

1. Read in conjunction with all relevant Architects, Engineers & design team drawings & specifications
2. Any discrepancies must be drawn to the attention of the lead consultant in writing
3. All dimensions are in millimeters unless otherwise noted & are subject to checking on site prior to fabrication or ordering of materials
4. This drawing is the copyright of Bowles & Wyer (and other consultants where referenced)

- Key
- Existing trees (retained)
 - Proposed specimen trees in soft
 - Proposed specimen trees in raised planters / pots
 - Amenity planting
mix of woodland planting and perennials for all year round interest
 - Wildflower planting
grass and wildflower species mix that provide a natural meadow look
 - Proposed hedges
native hedges along the boundary and amenity hedges for private gardens
 - Species-rich lawn
80% grasses + 20% flora
 - Sedum green roof

General notes:

To be read in conjunction with the landscape masterplan produced by B&W and the Arboricultural Impact Assessment by Landmark Trees .

Planting notes:

All new trees to have underground guying to provide adequate support.

All trees and specimen shrubs to be tagged or approved by landscape architect prior to order. No substitutions or changes in specification permitted without consulting the landscape architect.

Final species selection subject to nursery availability.

Soil: Imported topsoil, peat free to BS 3882.

For planting beds: generally, the top 300mm, max. 400mm of the planting bed to be peat free topsoil, followed by landscape subsoil.

All existing sub-base to be decompacted prior to importing new soil.

- Planting densities:**
- shrub planting: 3L-5L pots to an approximate density of 3pl/m²
 - herbaceous planting: 1L-3L pots to an approximate density of 7pl/m²
 - groundcover planting: 1L pots to an approximate density of 7-9pl/m²

PL02 02.02.24 AP - Access road to MG building updated
PL01 22.01.24 AP - For planning application
rev date by chk notes

BOWLES & WYER
5 Williams Court, Tunnel Way, Pitstone, Nr. Leighton Buzzard, LU7 9GJ
Tel: 01296 662439 Fax: 01296 663959 Email: admin@bowleswyer.co.uk

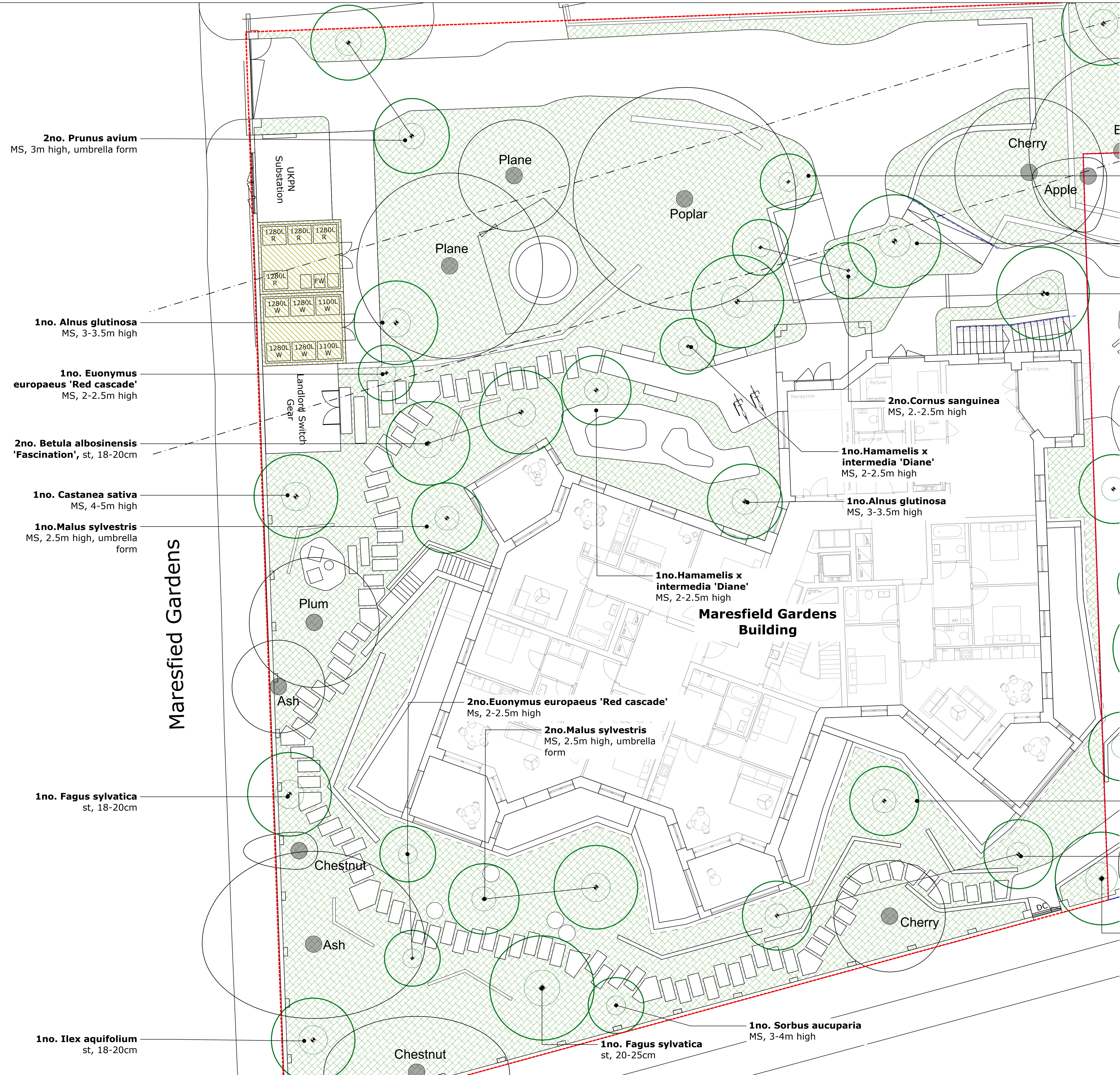
project title
Land adjacent to 46 Maresfield Gardens and 39A Fitzjohn's Avenue

drawing title
Specimen Planting - 39A FA

job number drawing number
3031 3031-XX-DR-L-603-PL

status
FOR PLANNING

scale 1:100@A1
0 1m 5m 10m



2no. *Prunus avium*
MS, 3m high, umbrella form

1no. *Alnus glutinosa*
MS, 3-3.5m high

1no. *Euonymus europaeus* 'Red cascade'
MS, 2-2.5m high

2no. *Betula albosinensis* 'Fascination', st, 18-20cm

1no. *Castanea sativa*
MS, 4-5m high

1no. *Malus sylvestris*
MS, 2.5m high, umbrella form

1no. *Fagus sylvatica*
st, 18-20cm

1no. *Ilex aquifolium*
st, 18-20cm

Plane

Poplar

Cherry

Apple

1no. *Amelanchier lamarcki*, MS, 2.5-3m high

1no. *Betula nigra*
MS, 3-3.5m high

2no. *Prunus avium*
MS, 2.5-3.0m high

2no. *Cornus sanguinea*
MS, 2.-2.5m high

1no. *Hamamelis x intermedia* 'Diane'
MS, 2-2.5m high

1no. *Alnus glutinosa*
MS, 3-3.5m high

1no. *Hamamelis x intermedia* 'Diane'
MS, 2-2.5m high

Maresfield Gardens Building

2no. *Euonymus europaeus* 'Red cascade'
Ms, 2-2.5m high

2no. *Malus sylvestris*
MS, 2.5m high, umbrella form

1no. *Corylus colurna*
st, 18-20cm

2no. *Cornus mas*
MS, 3-3.5m high

1no. *Sorbus aucuparia*,
MS, 3-4m high

1no. *Sorbus aucuparia*
MS, 3-4m high

1no. *Fagus sylvatica*
st, 20-25cm

- notes
1. Read in conjunction with all relevant Architects, Engineers & design team drawings & specifications
 2. Any discrepancies must be drawn to the attention of the lead consultant in writing
 3. All dimensions are in millimeters unless otherwise noted & are subject to checking on site prior to fabrication or ordering of materials
 4. This drawing is the copyright of Bowles & Wyer (and other consultants where referenced)

Key

Existing trees (retained)

Proposed specimen trees in soft

Proposed specimen trees in raised planters / pots

Amenity planting
mix of woodland planting and perennials for all year round interest

Wildflower planting
grass and wildflower species mix that provide a natural meadow look

Proposed hedges
native hedges along the boundary and amenity hedges for private gardens

Species-rich lawn
80% grasses + 20% flora

Sedum green roof

General notes:

To be read in conjunction with the landscape masterplan produced by B&W and the Arboricultural Impact Assessment by Landmark Trees .

Planting notes:

All new trees to have underground guying to provide adequate support.

All trees and specimen shrubs to be tagged or approved by landscape architect prior to order. No substitutions or changes in specification permitted without consulting the landscape architect.

Final species selection subject to nursery availability.

Soil: Imported topsoil, peat free to BS 3882.

For planting beds: generally, the top 300mm, max. 400mm of the planting bed to be peat free topsoil, followed by landscape subsoil.

All existing sub-base to be decompacted prior to importing new soil.

Planting densities:

- shrub planting: 3L-5L pots to an approximate density of 3pl/m²
- herbaceous planting: 1L-3L pots to an approximate density of 7pl/m²
- groundcover planting: 1L pots to an approximate density of 7-9pl/m²

PL02 02.02.24 AP - Access road to MG building updated
PL01 22.01.24 AP - For planning application
rev date by chk notes

BOWLES & WYER
5 Williams Court, Tunnel Way, Pitstone, Nr. Leighton Buzzard, LU7 9GJ
Tel: 01296 662439 Fax: 01296 663959 Email: admin@bowleswyer.co.uk

project title
Land adjacent to 46 Maresfield Gardens and 39a Fitzjohn's Avenue

drawing title
Specimen Planting - Maresfield Gardens

job number drawing number
3031 3031-XX-DR-L-604-PL

status
FOR PLANNING

scale 1:100@A1
0 1m 5m 10m