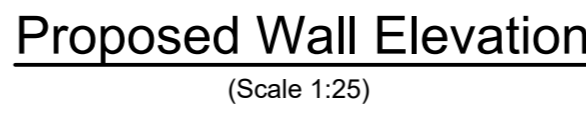
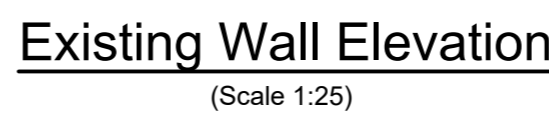


Section E-E  
Through Trial Pit 6  
(Scale 1:25)



Pile Schedule					
Pile No.	Pile Dia.	Compression Dead (kN)	Compression Imposed (kN)	Tension Imposed (kN)	Lateral (kN)
1	300	10	40	50	25
2	300	10	40	50	25
3	300	10	40	50	25
4	300	10	40	50	25
5	300	10	40	50	25
6	300	150	40	-	25
7	300	150	40	-	25
8	300	150	40	-	25
9	300	150	40	-	25
10	300	150	40	-	25

- DEMOLITION SEQUENCE OF WORKS
- 1) Apply for pavement closure/ diversion on Dartmouth Park Hill
  - 2) Demolition - provide safety and security temporary hoarding to site areas
  - 3) Carefully remove whole masonry panels
  - 4) Works to be carried out by competent contractor



NOTES

1. SECURE SITE AND UNDERTAKE DEMOLITION SEQUENCE OF WORKS
2. REPORT EXISTING WALL FOOTING DEPTH ON SCHOOL SITE TO ENGINEER FOR CONFIRMATION OF FOOTING EXTENSION
3. CONCRETE FOR FOOTING EXTENSION GRADE 32/40 TO BS 8110 - 20mm MAX AGGREGATE
4. WALL MASONRY - BRICKWORK 20N/mm<sup>2</sup> COMPRESSIVE WORK 7.3N/mm<sup>2</sup>. BRICK FLOORING TO MINIMUM 200mm BLOCKWORK STRENGTH. MORTAR CLASS 1/1M6.
5. WALL CONCRETE INFILL C32/40 TO BS 8110 10mm MAXIMUM AGGREGATE, FREEZE - THAW RESISTANCE
6. CONTRACTOR TO SITE CHECK ALL DIMENSIONS PRIOR TO ORDERING OF MATERIALS AND COMMENCEMENT OF THE WORKS.
7. THIS DRAWING TO BE READ IN CONJUNCTION WITH DRG. NO. 226549-FCG-ST-XH-DR-S-4001.


003	11.06.23	KC	JB	Revised as clouded
002	15.09.22	KC	JB	Wall construction revised
001	25.07.22	KC	JB	Construction issue
Rev	Date	By	Chk	Comment

BRINGING IDEAS TO LIFE

**FRANKHAM**

**Frankham Consultancy Group Limited**  
E: [enquiries@frankham.com](mailto:enquiries@frankham.com)  
W: [www.frankham.com](http://www.frankham.com)

**SUCROFF OFFICE:** Irene Hough  
Five Archer Business Park  
Kendal Road  
Skelton, near Daleside, SA2  
T: 020 8396 7777

**LONDON OFFICE:** Third Floor  
15-17 St Giles Street  
London EC1A 3BN  
T: 021 3631 0790

**EXFORD OFFICE:** wwwins Business Park  
Responsible Road  
Wotton  
Chesham, Bucks HP13 9PD  
T: 01895 322500

**STEVENAGE OFFICE:** Suite 206, Second Floor  
Kings Court Business Centre  
Hertford Road, Stevenage  
Herts SG1 1JH  
T: 01438 878510

London Borough Of Camden

Project Title:

Acland Burghley School

Drawing Title:

Boundary Wall at Dartmouth Park Hill

Status: **CONSTRUCTION ISSUE**

Drawn By: KC	Designed By: AA	Checked By: JB	Approved By: GL
Original Issue Date: 25/07/2022		Scale @ A0: As shown	

Job No/ File Ref		Originator	Zone	Level
226549		FCG	ST	EL
Type	Discipline	Number	Suitability	Revision
DR	S	4322	D3	C03